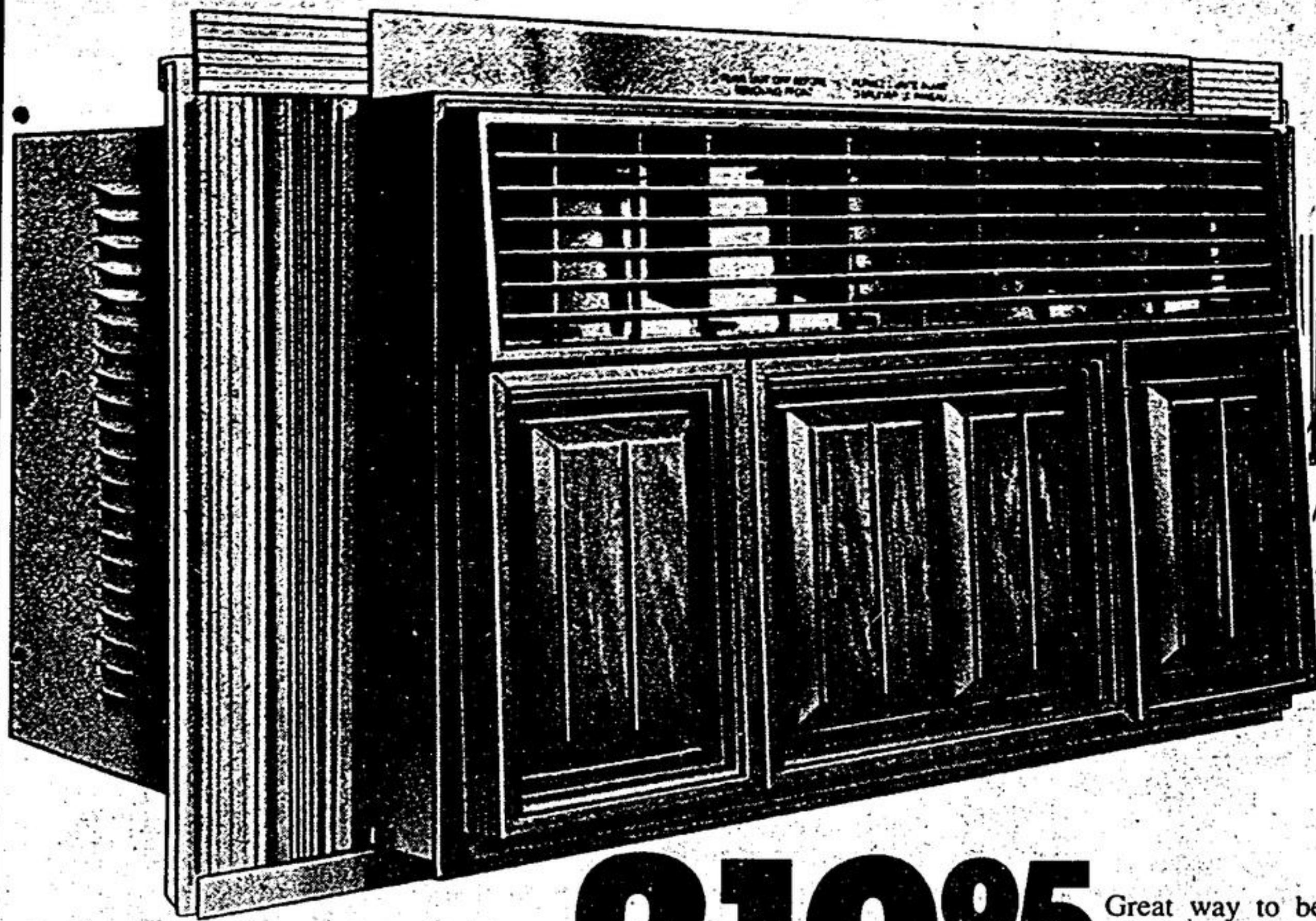


# SAVE \$20.00 - 6000 BTU Air Conditioner



- Furniture-Front style
- 11 Thermostat settings
- Abt. 19" W x 18" D x 12 1/2"

Reg. \$239<sup>95</sup> **219<sup>95</sup>** Great way to beat the heat - and budget problems! Handsome woodgrain-effect, non-rust aluminum cabinet; 3-speed fan; fitting kit for windows up to 40" w. 43-5012

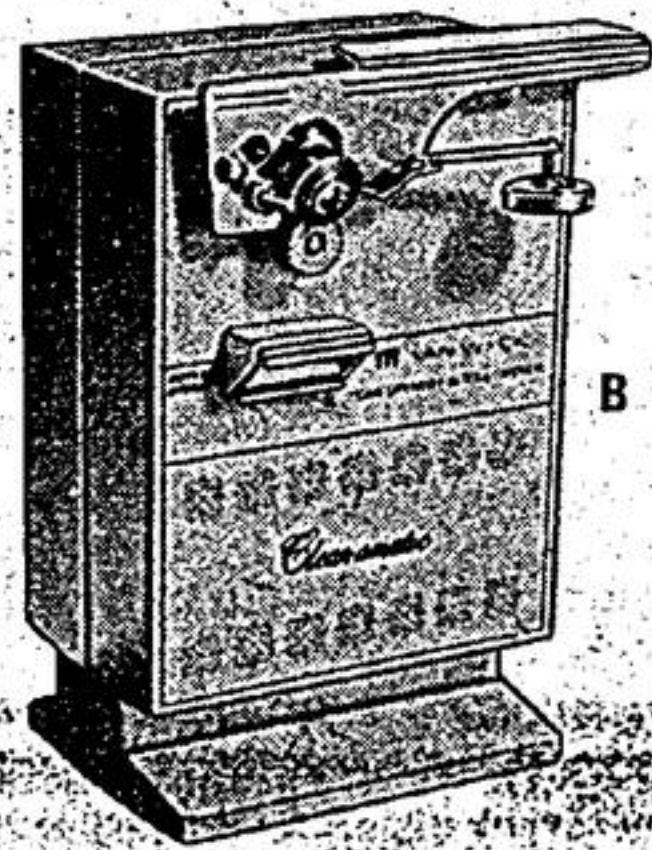
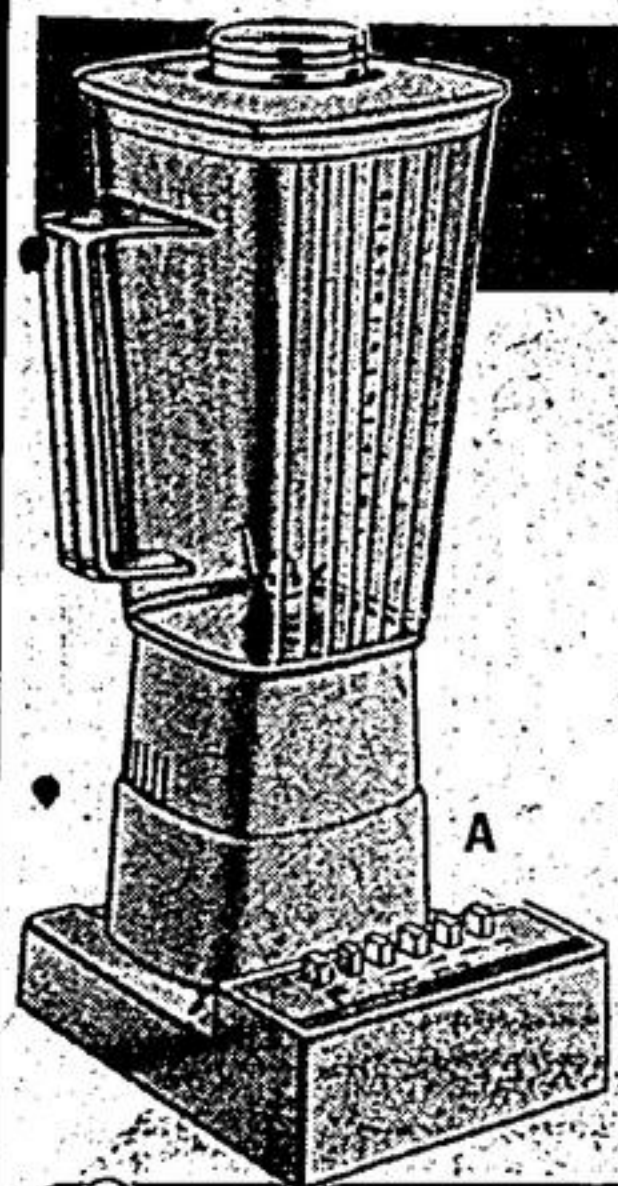


## Shoot at a Saving! Flash Cube Buys

Pkg. of **3** **144** Reg. \$1.77  
Pkg. of **3** **177** Special

1. FLASHCUBES by CGE Canadian General Electric with super light. 52-3420
2. MAGICUBES by ATLAS For type 'X' and other Magicube cameras. Save! 99-2171

## Mid-Summer Specials



### Van Wyck 8-Speed Blender

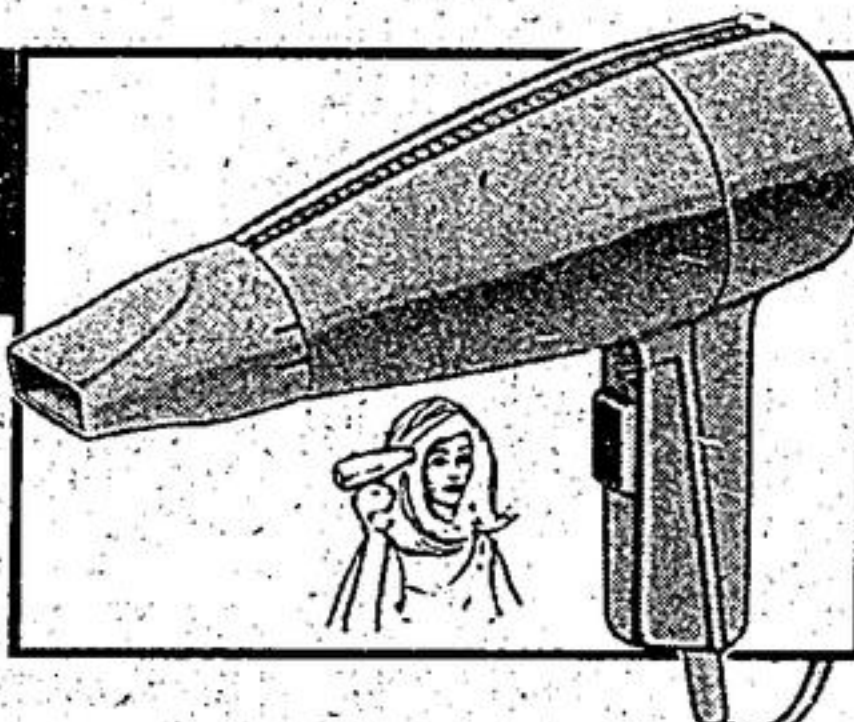
A. Simplifies meal-chores with pushbutton ease! 5-cup (40-oz) clear plastic jar. 99-2609

SPECIAL!  
**22<sup>88</sup>**

### Van Wyck Can Opener

B. Opens any size or shape can. Removable cutting assembly for easy cleaning. 99-2617

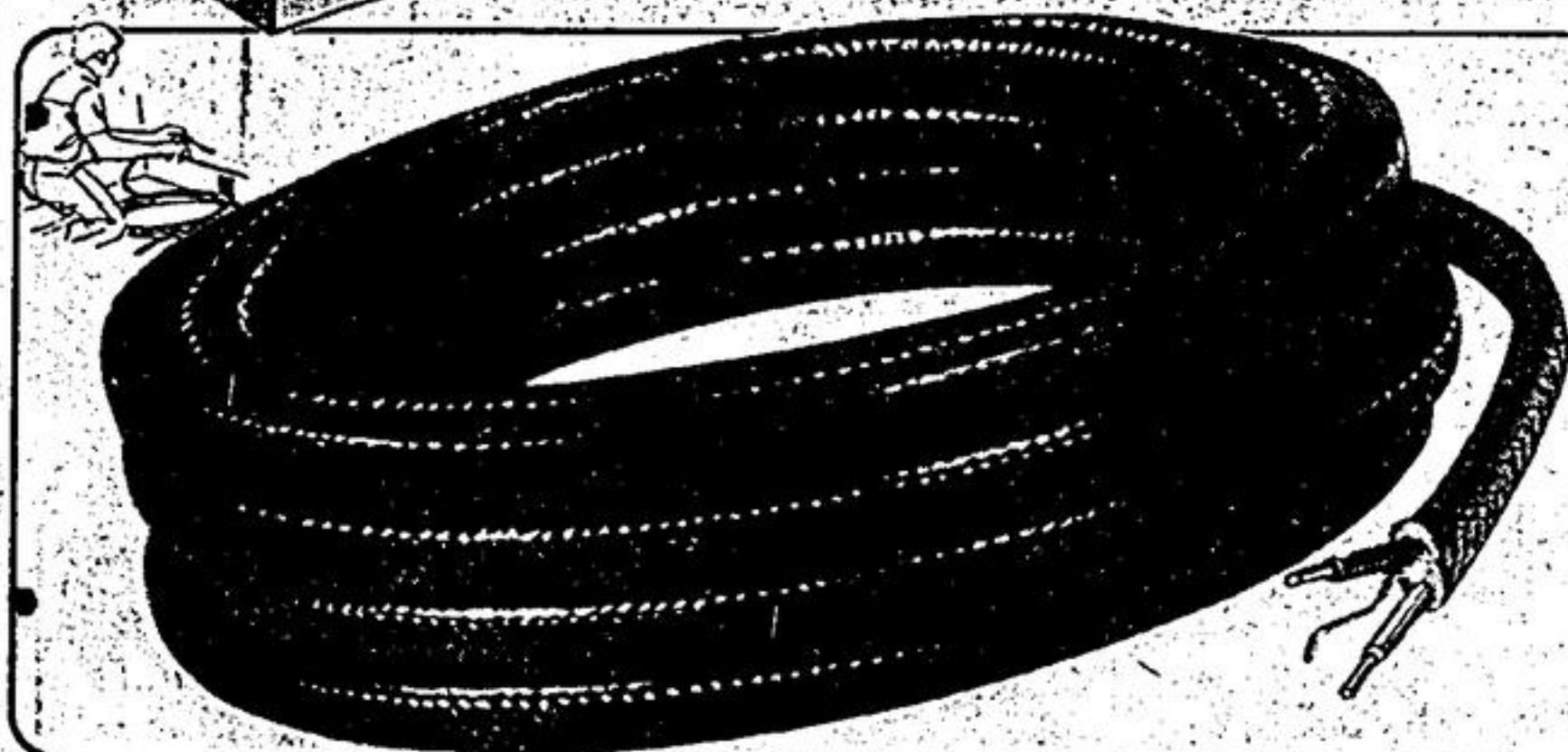
SPECIAL!  
**11<sup>99</sup>**



### Solaray Blower/Styler

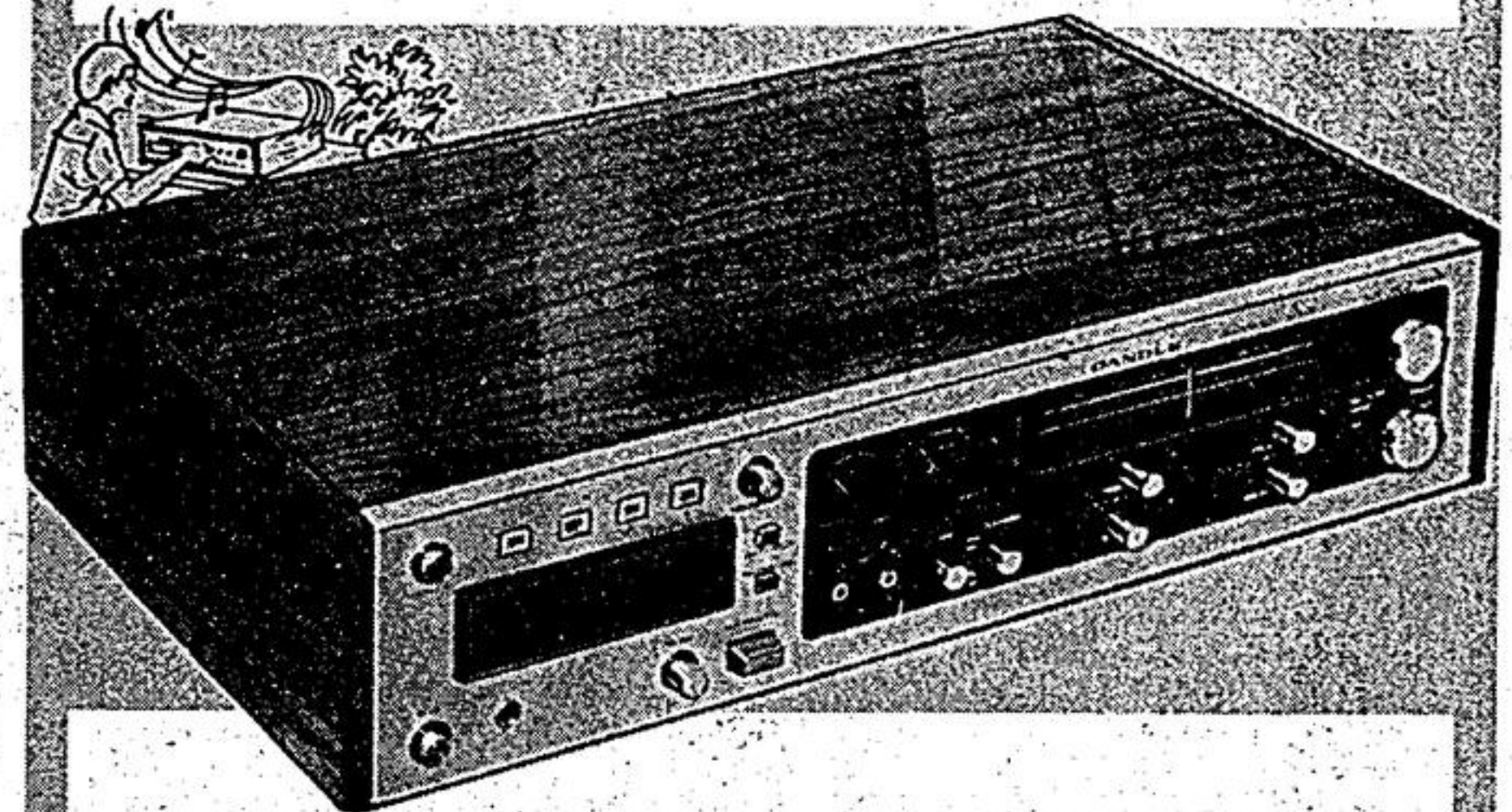
Gives you 450-w. drying power; 2 heat settings; a styling nozzle. Save! 43-8029

Regular \$17.79  
**14<sup>88</sup>**



## NMD7 14/2 Copper Wire **8 1/4<sup>c</sup>** IN 250' COIL

14-ga, 2-conductor wire; indoor use. 52-9778X Also available in 25, 50, and 100-ft coils ..... **10<sup>c</sup>**  
Newfoundland only NMD7 12/2 Copper Wire  
12-ga, 2-cond. wire, in 250' coil. 52-9789X ..... **13<sup>c</sup>**  
Also available in 25, 50, and 100-ft coils ..... **15<sup>c</sup>**



## 8-Track Recorder System

Play favorites with AM/FM Stereo receiver with 2 built-in side-mount speakers; 8-track record/playback with 2 VU meters; 2 recording mikes; headphone jack; input/output jacks. Save \$15.00! 44-0141

REGULAR PRICE: **139<sup>95</sup>**

**124<sup>95</sup>**

## AM/FM Portable Radio

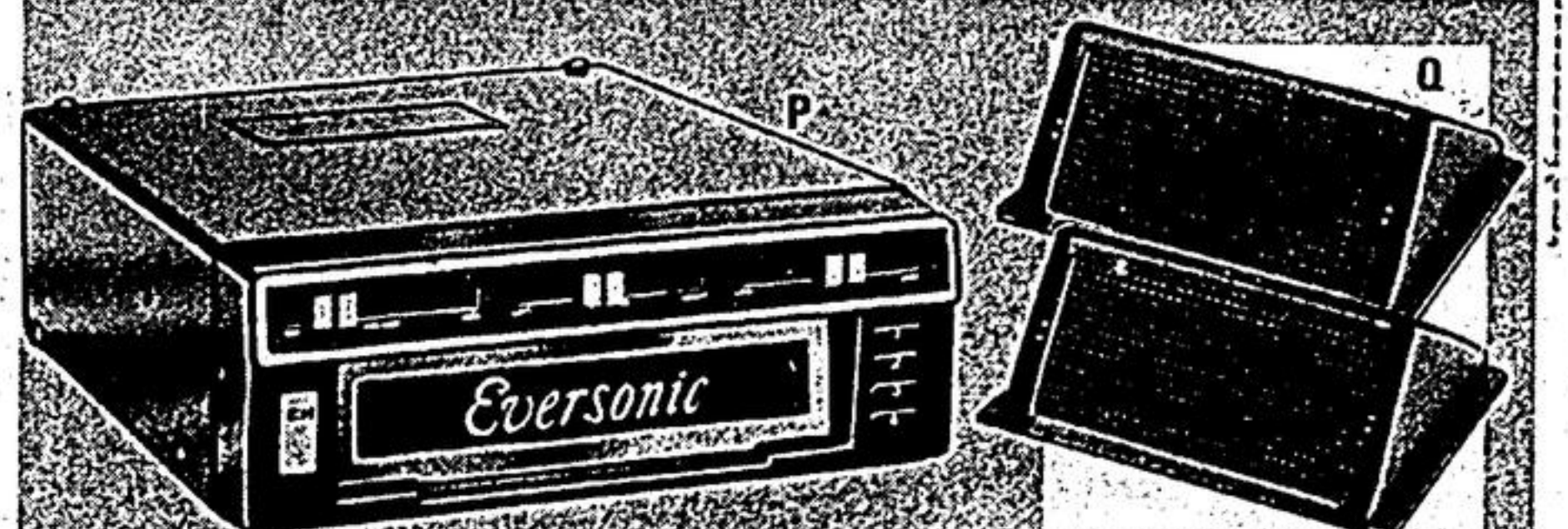
You'd expect to pay double this low price for such a smart Strauss model! Solid state; 5-section top-mounted telescopic antenna; plastic case 4 3/4 x 3 1/4 x 1 3/4"; wriststrap. 99-2678

SPECIAL PRICE

**6<sup>66</sup>** Batteries extra



## Have a Musical Ride at July Mid-Summer Savings!



### Car 8-Track Tape Player

P. Save \$5.07 on this high-fidelity Eversonic. Rotary controls, thumb-wheel tuning, indicator lights. 12-V neg. ground. 35-0347

Regular \$36.95

**29<sup>88</sup>**

### Wedge-Mount Speaker Kit

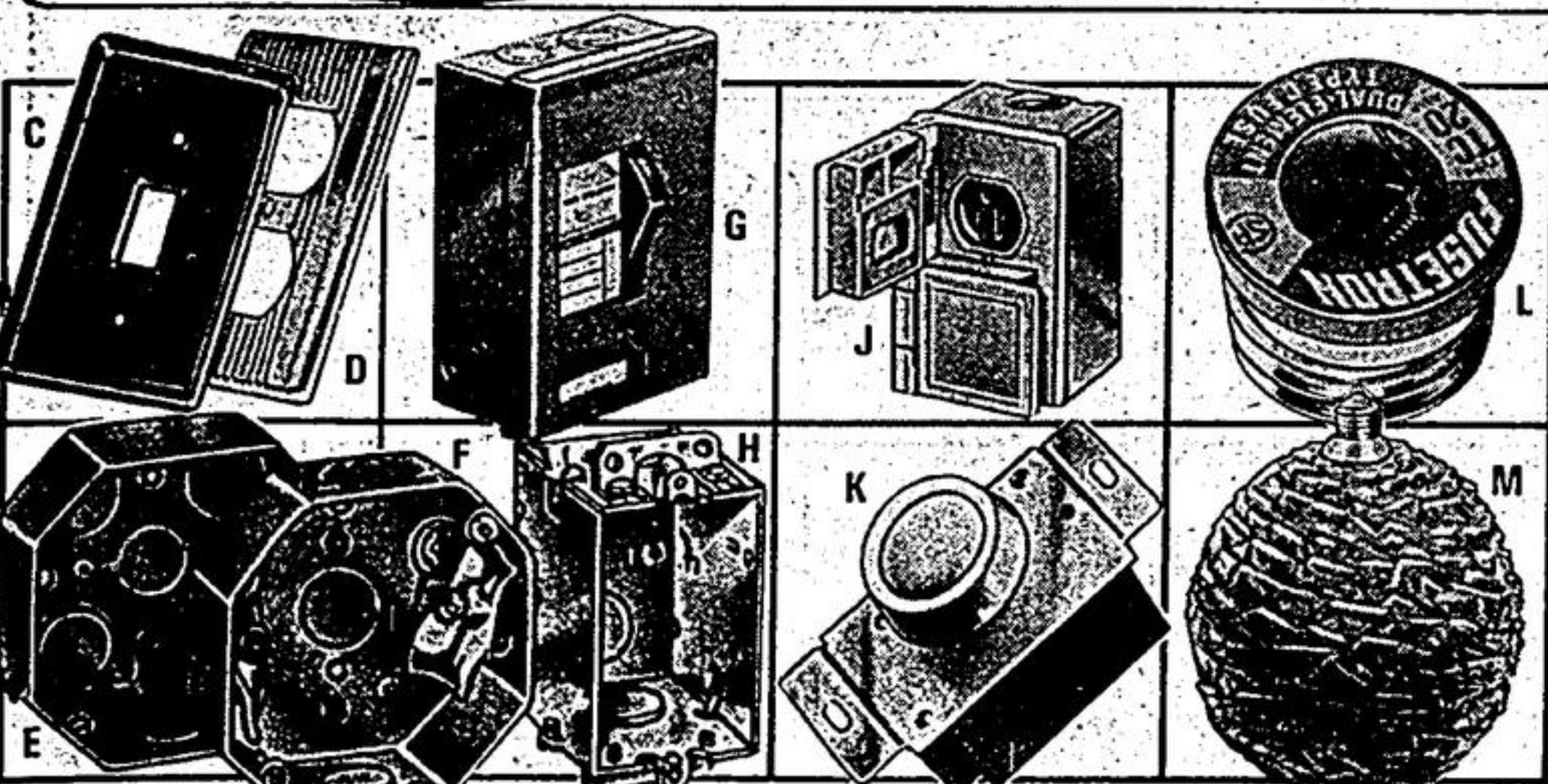
Q. Two 3 x 5" speakers with 8-ohm impedance, 3-watt output; 2-oz ceramic magnets. 35-4000

**7<sup>99</sup>** Reg. \$10.99

## BIC Shaver

Ideal for travel! Plastic handles; polymer-coated blades. Low special price. 99-2641

**3 for 39<sup>c</sup>**



C. SINGLE TOGGLE PLATE  
Brown bakelite. 52-6743X. Reg. 19c ..... **13<sup>c</sup>**  
As above in Ivory, Reg. 25c ..... **18<sup>c</sup>**

D. DUPLEX OUTLET PLATE  
Brown bakelite. 52-6713X. Reg. 19c ..... **13<sup>c</sup>**  
As above in Ivory, Reg. 25c ..... **18<sup>c</sup>**

E. OUTLET BOX with KNOCKOUTS  
4" octagonal; galvanized steel. 52-1214. Regular 59c ..... **49<sup>c</sup>**

F. OUTLET BOX with CABLE CLAMPS  
4" octagonal; galvanized steel. 52-1224. Regular 65c ..... **55<sup>c</sup>**

G. 30-AMP SWITCH BOX  
Double-blade, 2-fuse box. 115 to 230 volts. 52-8308. Reg. 5.99 ..... **4<sup>44</sup>**

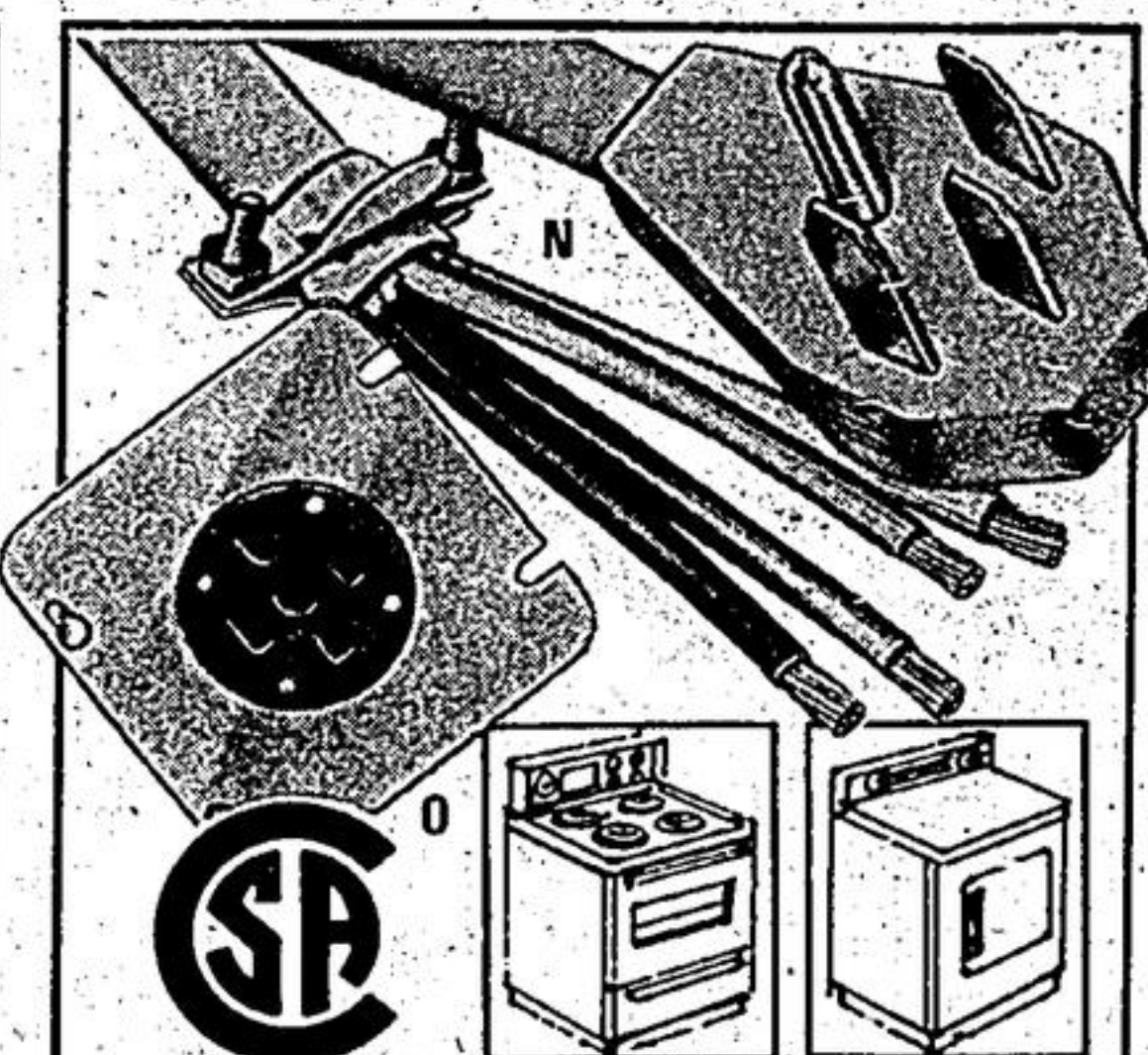
H. DEEP SWITCH BOX/KNOCKOUTS  
Galvanized steel; 52-1215. Reg. 59c ..... **49<sup>c</sup>**  
Shallow Box/Clamps; 52-1220. Reg. 67c 57c  
Deep Box/Clamps; 52-1223. Reg. 65c .. 55c

J. OUTDOOR OUTLET BOX  
Ground duplex. 52-1250. Reg. 4.99 ..... **3<sup>99</sup>**

K. 2-WAY ROTARY DIMMER REG. 5.99  
Dial your light. Replaces any single-pole switch. 52-8289 ..... **3<sup>33</sup>**

L. OVERLOAD PLUG FUSES  
Dual element. 15, 20, 30-amp. CSA cert. 52-3521X. Reg. 59c ..... **49<sup>c</sup>**

M. CLEAR 7" SPUN PLASTIC GLOBE  
Fits any bulb socket. Up to 100w bulb. 52-3301. Reg. 4.99 ..... **3<sup>99</sup>**



## Range and Dryer Safety Wiring

N. CABLE/PLUG SETS with durable metal box connector. 52-2240X  
Range 5 1/2' Cord ..... **5<sup>99</sup>** Reg. \$7.49  
Dryer 6 1/2' Cord ..... **4<sup>99</sup>** Reg. \$6.49

O. RECEPTACLE/COVER PLATE 52-7240X.  
Range 50-Amp ..... **2<sup>99</sup>** Reg. \$3.99  
Dryer 30-Amp ..... **2<sup>99</sup>** Reg. \$3.99

## Save \$2.00! 3-Wire Heavy-Duty Extension Cord

Extend your budget with a \$2.00 saving! Rugged 100-ft cord for outdoor use. Regular \$9.99. 52-2473

**7<sup>99</sup>** Regular \$9.99

