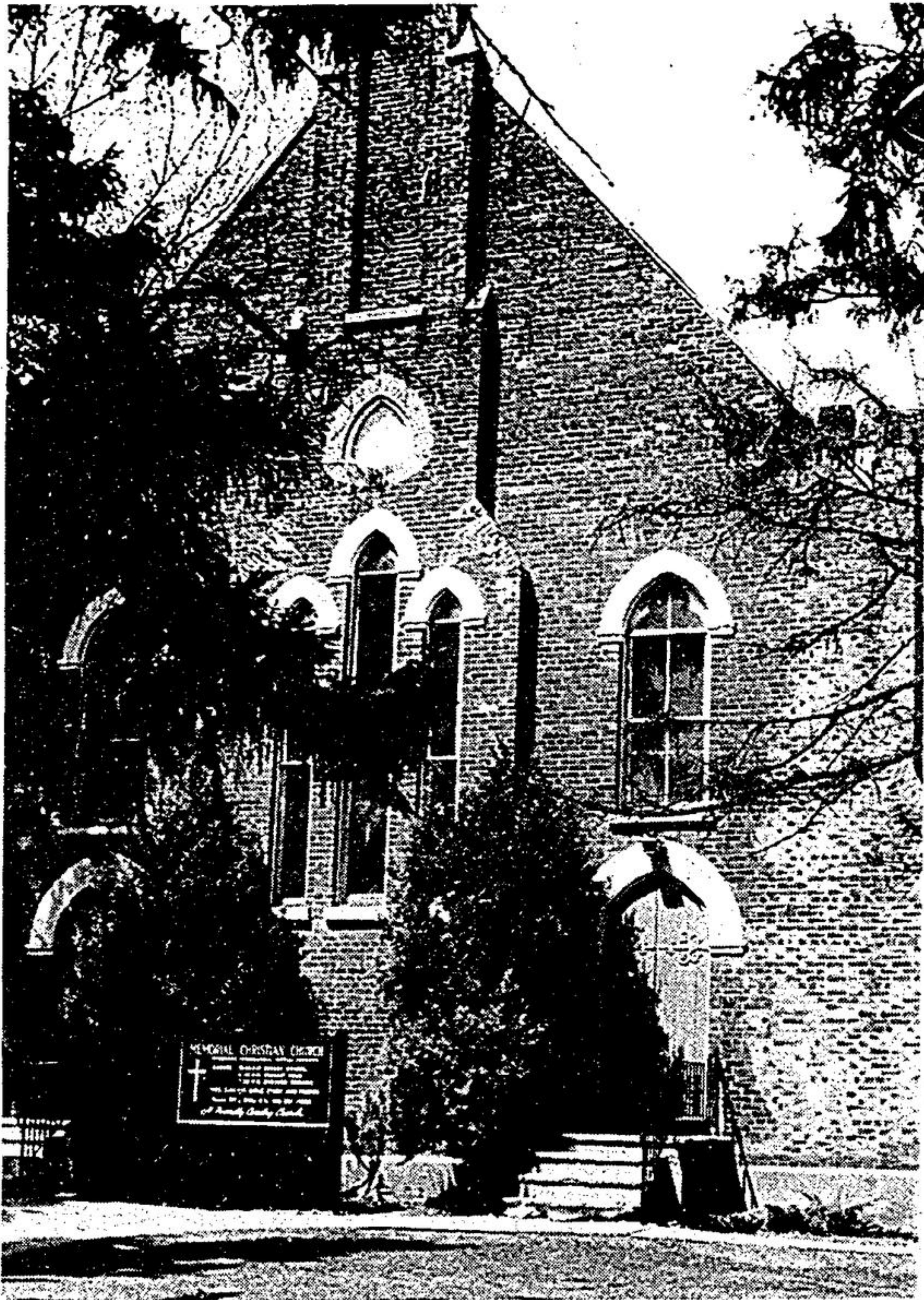


RELIGION LARGE PART OF TOWN'S LIFE



Memorial Christian Church



A large part of the church services was devoted to bible classes. This is a picture of just one of the many classes, circa 1900.

The religious influence has always been apparent in this town, right from the birth of Stouffville to present day.

The group of people who settled the area were Mennonites and their influence has been felt throughout the years.

The churches have always meant a lot to the people, through attendance and other functions; such as the annual Music Mania which has proved itself to be a great success.

There is a wide cross-section of denominations in town ranging from; the Missionary Church on 159 Main St. E.; United Church on 34 Church N.; Pentecostal Church, 460 Main E.; St. James

Presbyterian on Hwy. 47 and Main St. E.; Christ Church Anglican on Sunset Blvd.; Baptist on 76 Main W.; and the new Jehova Witness on Stouffer Ave.

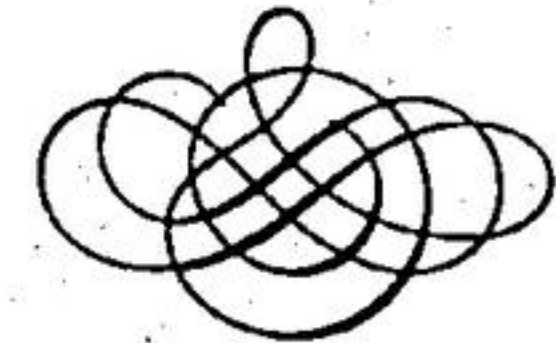
As in any aspect of life, the churches have changed since their beginnings. It is no longer the strict, must go situation when people were more God-fearing and devoted to their church. Now it is a more relaxed affair, with younger ministers and a better sense of the influence of churches in a person's life.

The new Baptist church, which is one of the oldest in town, has just recently welcomed a new pastor, Joseph Bull,

who hopes to bring back more people to the church.

Whatever religious persuasion one follows, does not matter as much as the fact that the persons enjoys his or hers church. For a town that has always had a strong religious background the churches will always stand out as a large part of the communities lifestyle.

In Stouffville's 100th year it is time to reflect on the importance the churches have had in shaping the town's character and outlook on life. Even though their role might not be as important as it once was; the churches still stand as a daily reminder of the large part they played in developing the town.



Baptist church