



Members of the Stouffville Horticultural Society were out in force last Friday night filling the planters in front of the new library with flowers and shrubs. The society has also donated \$500 towards landscaping of the building. Shown here employing their gardening expertise are: from left, Marion Housser, Della Paisley, Alice Vague and daughter Diane. Other helpers not shown in this photo were Audrey Avery and Fred and Lillian Byer.

## Conventions cost Region \$10,400

NEWMARKET send six of seven in Tokyo and Vancouver. Despite protests, York engineering committee members to conventions at a cost of \$10,400. Regional council



Both of these lake trout were caught by Bill Sheridan, of Boyer St., in Stouffville, right, in Lake Temagami, last Thursday. The fish he is holding is 38 1/2 inches long and weighed in at 22 pounds. The fish his daughter Wendy is holding is 32 inches long.

agreed Thursday to allow three committee members and one staff member to attend the annual Canadian Roads Transportation Conference in Vancouver from Oct. 10 to Oct. 14.

Another three committee members who do not go to Vancouver will attend the International Roads Meeting in Tokyo, Oct. 16 to 21.

The Tokyo trip will cost about \$1,900 per person and the Vancouver joint about \$700, bring the total for the two conventions to \$10,400, according to engineering committee chairman Ray Twiney.

Both Mr. Twiney and Bob Hodgson, commissioner of engineering, have defended sending of the committee members to the conventions.

Mr. Twiney, who described the trips as

Mr. IGA's feature of the week...

BUDGETS COME SMILIN' THRU

CANADA GRADE "A" EVICERATED

# Fresh Chickens

# 63¢

3-LB. AVG.

LB.

- MAPLE LEAF, READY TO SERVE: Smoked Pork Shoulders 95¢ LB.
- LAZY MAPLE, RINDLESS, SLICED: Side Bacon 1.49 1-LB. PKG.
- SWIFTS: Swift's Premium Wieners 78¢ 1-LB. PKG.
- SCHNEIDER'S, REGULAR, BEEF OR MAPLE: Mini-Sizzler Sausages 1.19 1-LB. PKG.
- TABLETITE, SLICED, VARIETY PACK: Sandwich Meats 1.19 1-LB. PKG.
- SCHNEIDER'S: Skillet Strips 99¢ 1-LB. PKG.

ASSORTED FLAVORS  
**Jell-o Jelly Powders**  
3-OZ. PKG. **21¢**

SPAGHETTINI, SPAGHETTI, ELBOW MACARONI OR SMALL SHELL MACARONI  
**IGA Pasta**  
2-LB. BAG **57¢**

Lux Liquid Detergent 32-FL. OZ. PLASTIC BTL. **99¢**

POST: Sugar Crisp Cereal 400-g. PKG. **89¢**

BEEF, CHICKEN, TURKEY OR BEEF & KIDNEY, FROZEN  
**Savarin Pot Pies**  
8-OZ. PKGS. **3 \$1**

HOSPITALITY: Tea Biscuits 2 PKGS. OF 6 **\$1**

PARAMOUNT: Flaked White Tuna 5 1/2-OZ. TIN **89¢**

LIBBY'S (IN TOMATO SAUCE)  
**Spaghetti or Alpha-Ghetti**  
8-FL. OZ. TINS **4 \$1**

PRODUCE OF U.S.A. CANADA NO. 1 GRADE  
**Florida Tomatoes** 3 **99¢**

PRODUCE OF U.S.A. "NEW CROP"  
Sunkist Valencia Oranges **99¢**

FROM BRITISH COLUMBIA CANADA FANCY GRADE  
Spartan Apples **39¢**

PRODUCE OF U.S.A. CANADA NO. 1 GRADE "SWEET"  
Green Peppers **39¢**

IGA FANCY  
**Tomato Juice**  
66-FL. OZ. TIN **49¢**

LIBBY'S (IN TOMATO SAUCE)  
**Deep Brown Beans** 4 8-FL. OZ. TINS **\$1**

BEST ASSORTMENT OR CHOCOLATE CHIP  
**Colonial Biscuits**  
2-LB. PKG. **\$1.39**

PROCESS  
**Kraft Cheez Whiz** 16-FL. OZ. JAR **\$1.29**

LUNCHEON MEAT  
**Swift's Prem**  
12-OZ. TIN **79¢**

ASSORTED VARIETIES  
**Mighty Dog Dinners** 6 1/2-OZ. TIN **25¢**

IGA FANCY  
**Whole Kernel Corn** 12-FL. OZ. TIN **37¢**

RAGU, ASSORTED VARIETIES  
**Spaghetti Sauce** 28-FL. OZ. JAR **99¢**

BETTY CROCKER, ASSORTED VARIETIES  
**Hamburger Helper** 6 TO 8-OZ. BOX **59¢**

DUNCAN HINES, MOIST 'N' EASY ASSORTED VARIETIES  
**Snack Cake Mixes** 14-OZ. PKG. **69¢**

HIGH LINE, FROZEN  
**Sole Fillets** 16-OZ. PKG. **\$1.79**

DIXIE CLUB, FROZEN (2 PACK)  
**Pie Shells** 10-OZ. PKG. **59¢**

100% PURE VEGETABLE OIL (QUARTERS)  
**Parkay Margarine** 2-LB. CRTN. **\$1.15**

KRAFT, PROCESS  
**Velveeta Cheese** 1-LB. PKG. **\$1.39**

## Recreation program

An extensive development program for outdoor recreational purposes in all conservation areas of the Metropolitan Toronto and Region Conservation Authority was announced recently by Natural Resources Minister Frank S. Miller.

The project will involve 15 Authority Conservation Areas and forms part of a five-year development program. It will provide for a comprehensive program of conservation management, including stream improvement, fish management, woodlot management, reforestation and provision of outdoor recreation opportunities.

This year's program will concentrate on reforestation, shrub and wildlife planting, landscape tree plantings and habitat improvement.

Areas affected include Albion Hills, Boyd, Bruce's Mill, Claremont, Claireville, Cold Creek, Glen Haffy, Greenwood, Heart Lake, Milne, Potticott Creek, Black Creek, Oak Ridges, Bolton Reservoir and Snelgrove Reservoir.

## Re-elect

# Bill Hodgson

Progressive Conservative  
York North

Ten years ago, Bill Hodgson was first elected to represent York North in the Ontario Legislature. During that time, Bill has worked for the people of the riding. He's played a major role in the rapid development of the riding which has grown spectacularly.

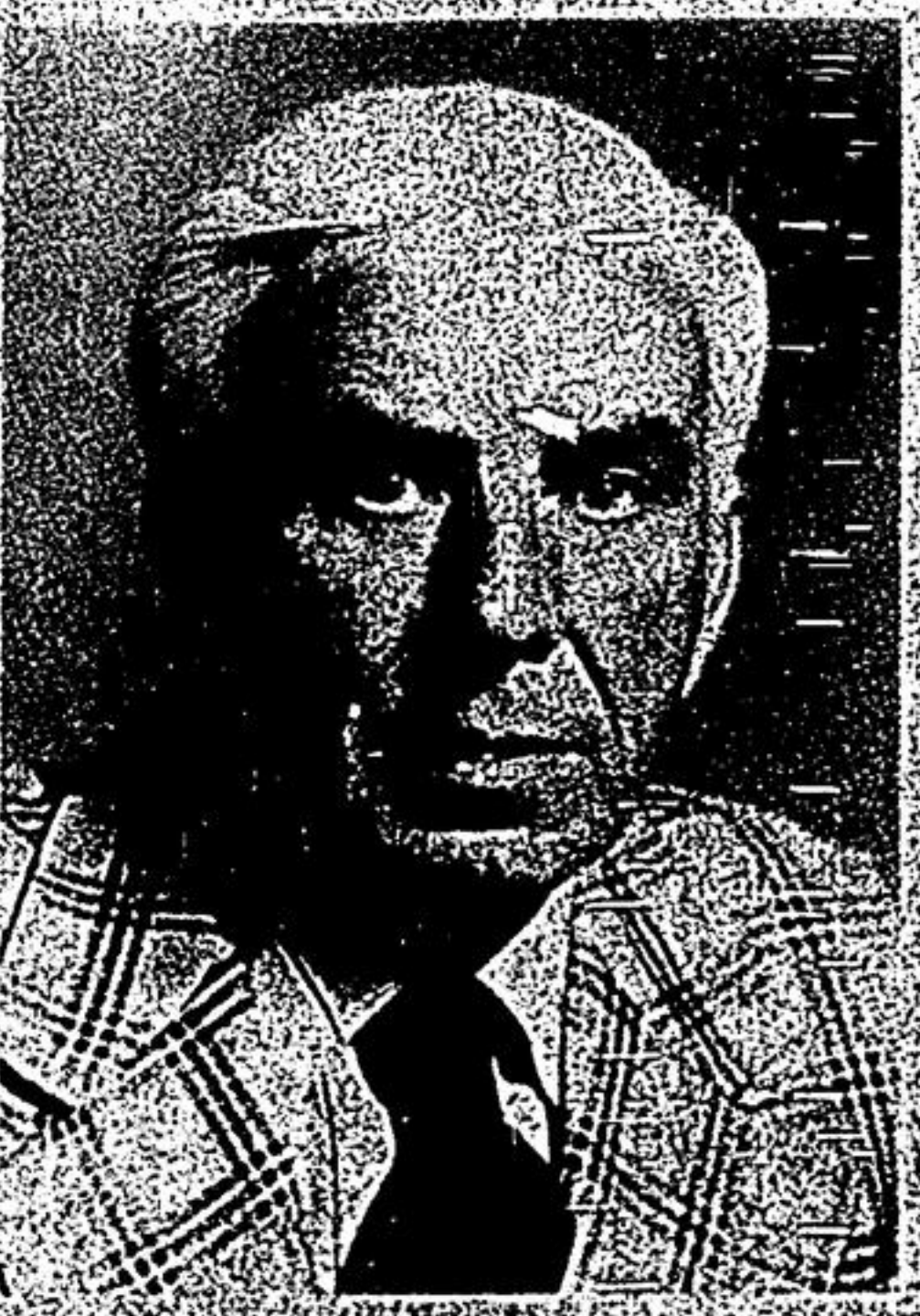
Bill Hodgson is a dedicated member of the Provincial Parliament who serves all the people of the riding well. His counsel and service to the municipal councils of the Region of York and to individuals in all walks of life have truly warranted the slogan, "Hodgson helps People."

That's why Bill Hodgson keeps getting re-elected.

Because he cares about the people in York North and works night and day on their behalf.

This time, more than ever, York North needs Bill Hodgson to represent the riding in Queens Park.

Make no mistake on Thursday, June 9, return Bill Hodgson to the Ontario Legislature.



**Bill Hodgson** X

Want to help Bill Hodgson in his campaign?

Call these Action Centres

- Newmarket 898-4506
- Stouffville 640-1320
- Aurora 727-4250
- Woodbridge 851-2883

**HODGSON HELPS PEOPLE**

**9 1/2**  
Annual Interest Payment  
on 5 year term

GUARANTEED INVESTMENT CERTIFICATES

STANDARD TRUST COMPANY  
8 Wellington St. W.  
Markham, Ontario  
Telephone 294-6655

**IGA** STOUFFVILLE — IGA  
Open Mon. to Wed. 6 P.M. Thurs. & Fri. til 9 P.M. Sat. 6 P.M.