

Canada

Newfoundland

The east's most spectacular mountains

by Stanley Ryan

Newfoundland's west coast is one of the most beautiful and remote areas in Canada. Today, you can drive the entire length of the Great Northern Peninsula on good roads.

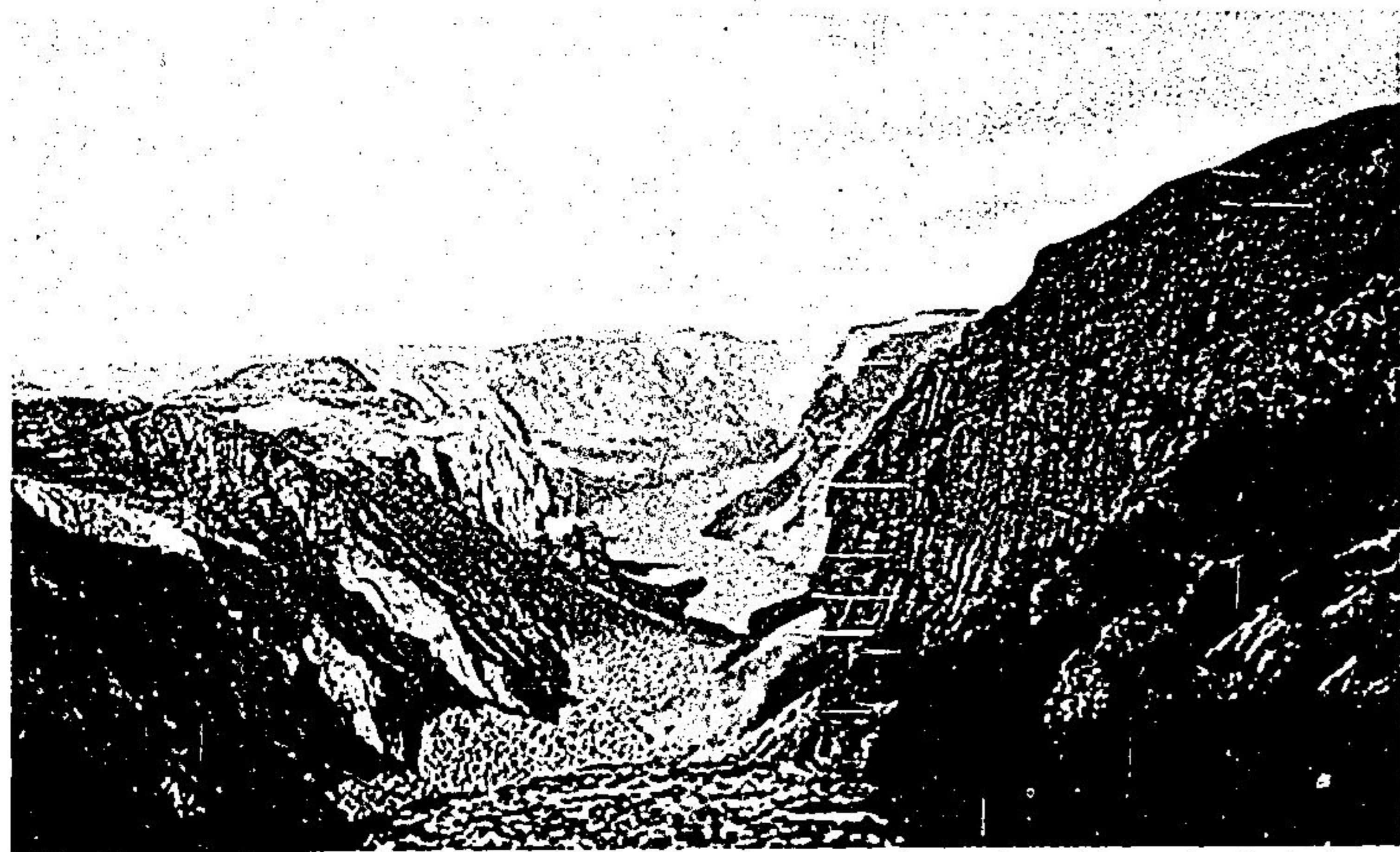
The best way to tour the area is by camper. Excellent camp grounds are located at strategic points along the province's highways. Your tour of the peninsula begins when you leave the Trans-Canada Highway at Deer Lake. This community is 32 miles north east of Corner Brook up the beautiful Humber River Valley. The road to Bonne Bay on the western coast cuts through the Long Range Mountains which run the length of the peninsula. After travelling through beautiful lake country for twenty miles, (fishing and hunting are excellent), the terrain becomes more mountainous and you enter Gros Morne National Park. It's Canada's newest national park founded in 1970.

All around you have the most spectacular peaks of the Long Range Mountains including the tallest, the 2,644 foot Gros Morne. By the time you reach Bonne Bay, on the Gulf of

St. Lawrence, you are still more than 15 miles from the sea, driving beside a great fjord. Rocky slopes plunge into the water. Frequent streams slide and cascade noisily. Here and there are small fishing communities clinging to the hillsides with names like Glenburnie, Birchy Head and Shoalbrook. They remind you that this area was settled by fishermen from the British Isles.

At Woody Point, there is a tiny car ferry which will take you across the bay to Norris Point. There is a road which leads back to Deer Lake, but our route is north and east along the gulf coast. The park stretches 40 miles with many fine beaches and expanses of shifting dunes. You are driving over a narrow coastal plain. Inland are dense forests, narrow mountain lakes, tidal inlets and many streams noted for brook trout and salmon. The mountains rise steeply on your right. Gros Morne Park has campsites, nature trails and a nature centre.

Small fishing villages dot the coast of this great wilderness country as you drive the 300 miles to the eastern tip of the peninsula. At Port au Choix is one of Canada's most important prehistoric sites, discovered in the late 60's. It is a burial ground of the "red paint people" who roamed the coasts of Maine and Labrador 5,000 years ago. Archaeologists have



Newfoundland's Long Range Mountains are divided by magnificent fjords and beautiful lakes like the one in the centre of this picture.

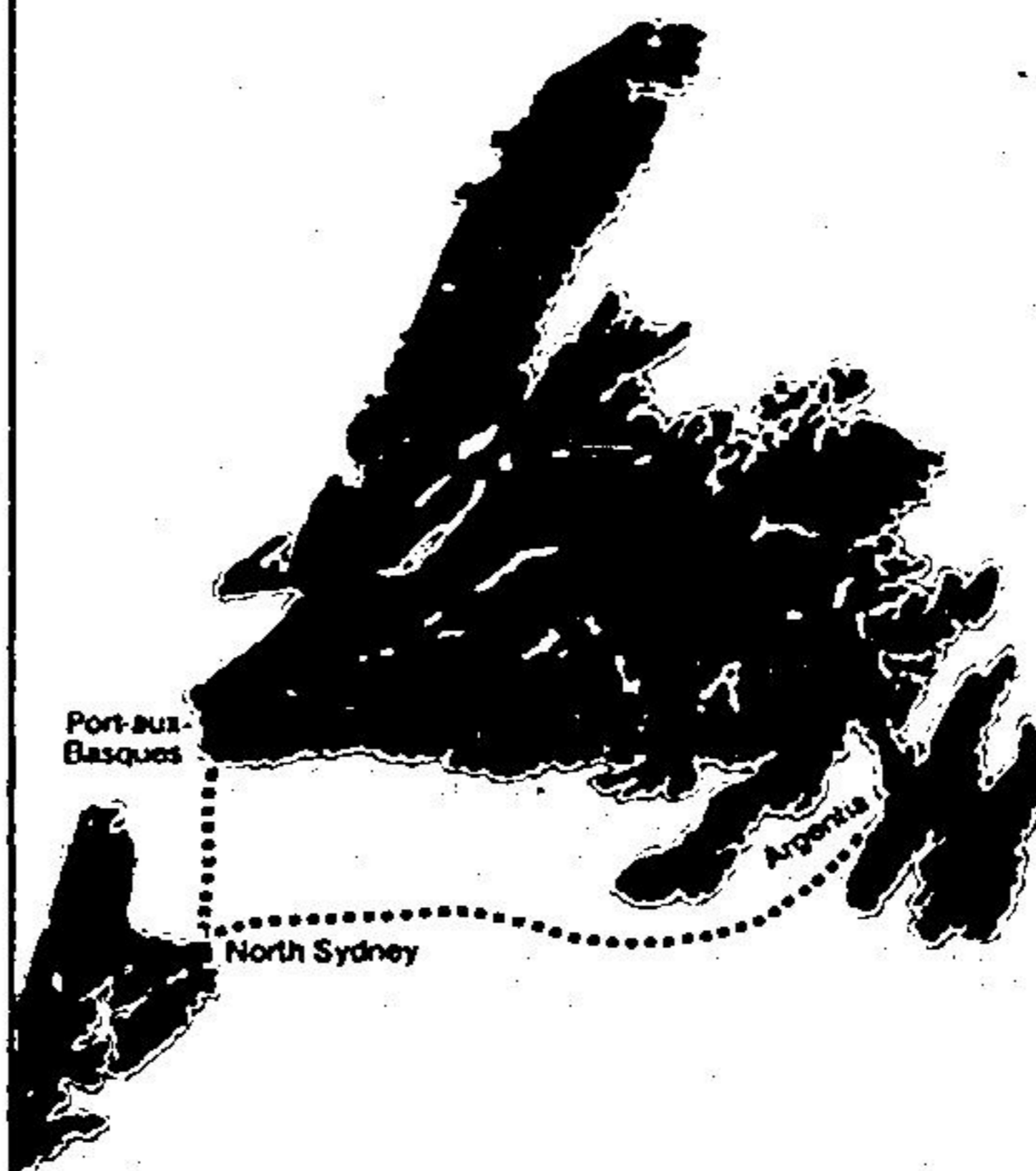
You can't sail to **Newfoundland** this year without reserving in advance.

If you're planning a trip to Newfoundland this year, you should know that all space on all CN Marine ferries operating between North Sydney, N.S., and Port-aux-Basques or Argentia. Newfoundland must now be reserved in advance.

Now, with advance reservations, you will know that your passage is confirmed. So there will be no chance of last minute disappointment or frustrating delays in your travel schedule.

All we ask is that you reserve ahead. Pick up your tickets at the ferry terminal at least two hours before sailing time or your reservations will be automatically cancelled. And please, let us know if you want to change or cancel your reservations; otherwise you will be billed for your unclaimed ticket.

For all reservations and information on CN Marine Newfoundland ferry service, call your VIA CN Passenger Sales Office.



CN Marine