



One of the oldest buildings in Markham is being rapidly demolished to make way for the senior citizens' apartments slowly rising in the background. The structure, built 150 years ago to house the Speight Wagon Company, later accommodated a number of other businesses. John's Hideaway, a furniture store was the last tenant.

Grain disease could result in loss

By A. A. Wall
Agricultural Representative for York Region.
YORK REGION — The disease problem in spring grain is quite serious here in York. Many fields are affected, and some of them will be almost a total loss. The disease is caused by a virus, which is spread by aphids. In barley, the leaves turn yellow, at the tips first

and then over the whole leaf with blotches or stripes of yellow. In oats, the leaves turn a rusty or red colour.

Infected plants produce few tillers, and few heads with light seed, or they may not head out at all. The disease is much more serious in late seeded oats and barley, and I'm afraid we'll have some fields that won't be worth combining this year.

The virus is not carried on either the seed or the soil, so that fields won't be infected for future crops. Aphids pick up the disease from infected perennial grasses, and spread it to grain in early June.

Wheat combining started last week. The

first few fields turned out reasonably good yields, but kernel size wasn't quite up to par.

Crop prospects are generally quite good. Corn at the tassel stage now should mature nicely before normal frost date, and it's mostly at that stage now.

The grain crop in the West is good so far, and expected to yield more than last year's but their oats and barley will be down. We hear a lot about dry weather in Europe, but crop estimates there are only down 15 per cent to 20 per cent below normal.

Stouffville park equipment indeed is pitiful—reader

Dear sir,
I am writing in response to your query concerning the Stouffville park playground. I heartily concur with Mrs. Taylor's opinion that the facilities are "pitiful". In view of the fact that the majority of the recreational facilities in existence here came to be through the generosity of one individual, surely town council could sponsor something in the line of playground equipment. I too am the mother of a preschooler and find the facilities outside my community to be far superior to those afforded the residents of Stouffville.

Yours truly,
Myra Chepak,
9th Line S.

REWARD--\$1,000.

For information leading to the arrest and conviction of Person(s) causing damage to vehicles owned by and located on the premises of Don Anderson Haulage Ltd.

during the evening of July 26th.--1976.

Please contact Don Anderson at 640-3981

NASSAU

SkyLark Holidays

FROM \$241⁰⁰

Twin Cost Per Person from Toronto

Departures	1 Week	2 Weeks
May 1-June 26		
Sept. 4-Oct. 23	\$241	\$339
July 3-Aug. 28		
Oct. 31-Nov. 21*	\$249	\$359

*Sundays.
Service charge: In lieu of tax and gratuities to maids and bellboys US \$12 per person, per week.
Single supplement: + \$90 per week.
Children's rate: Children (2 and under 12 years) sharing a room with 2 adults 1 Week: \$129; 2 Weeks: \$139.

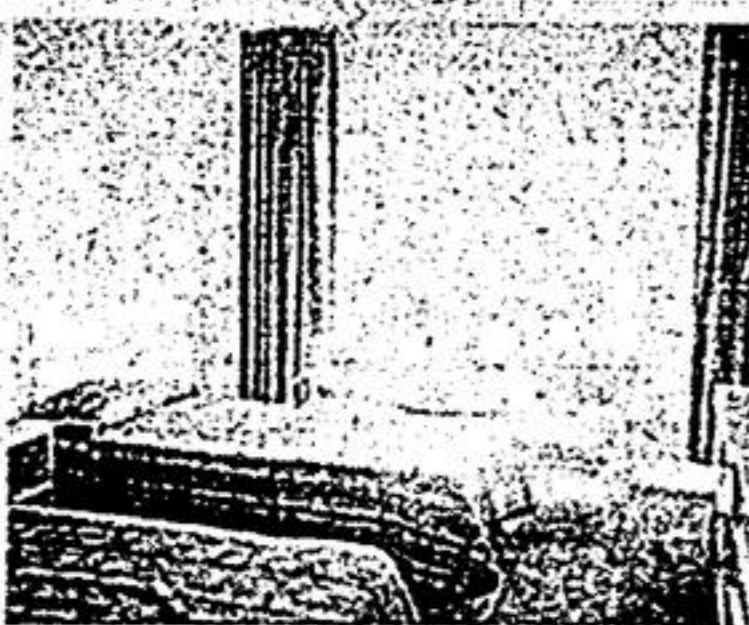
Emerald Beach Hotel



LOCATION: Located on Cable Beach four miles from downtown Nassau.
FACILITIES: Directly on a three-quarter mile stretch of Cable Beach. Dining and entertainment: There's a great choice of eating places at the Emerald Beach — the Cafe Bama Mama coffee shop; the Hibiscus Dining room serving buffet dinner three nights a week; or the Pisces Room providing good dinners. Sip a quiet drink in the Main Brace Bar while the Fore n' Alf swings every night with a live band.

SPORTS: Swimming in the fresh water pool. There will be no lack of things to do on this holiday. Play tennis on the free four concrete courts which are floodlit at night. Free green fees and golf privileges at the Ambassador Beach Golf course (mandatory golf cart \$12.00). Other optional sporting facilities on the premises include sailing, u-drive speed boats, snorkling, water skiing, deep sea fishing trips, table tennis, shuffleboard, putting and volleyball.

ROOMS: The attractive, well appointed Superior rooms are located in the main building (ocean side), garden wing, or patio rooms. Rooms are air conditioned with full size bath with shower.



Good value economy hotel with excellent location.

BONUS FEATURES

- Complimentary manager's cocktail party including:
 - Champagne cocktails
 - Dancing to live music
 - Native Bahamian hors d'oeuvres
- Welcome rum swizzle
- Balmoral Island party including boat trip and refreshments
- Complimentary green fees at the Ambassador Beach Golf Club
- Complimentary tennis
- Three Dinners

REGISTER NOW FOR CHRISTMAS & MARCH SCHOOL BREAKS.

TRIAD TRAVEL SERVICE

(416) 640-5491

153 Main St. W., Stouffville, Ont.

HOUSE HUNTING?
For Quick Results ...
CLASSIFIED want ads
The Tribune
640-2100 • 361-1680

LOOKING FOR A USED CAR?
For Quick Results ...
CLASSIFIED want ads
The Tribune
640-2100 • 361-1680

JOB HUNTING?
For Quick Results ...
CLASSIFIED want ads
The Tribune
640-2100 • 361-1680

SOMETHING TO SELL?
For Quick Results ...
CLASSIFIED want ads
The Tribune
640-2100 • 361-1680