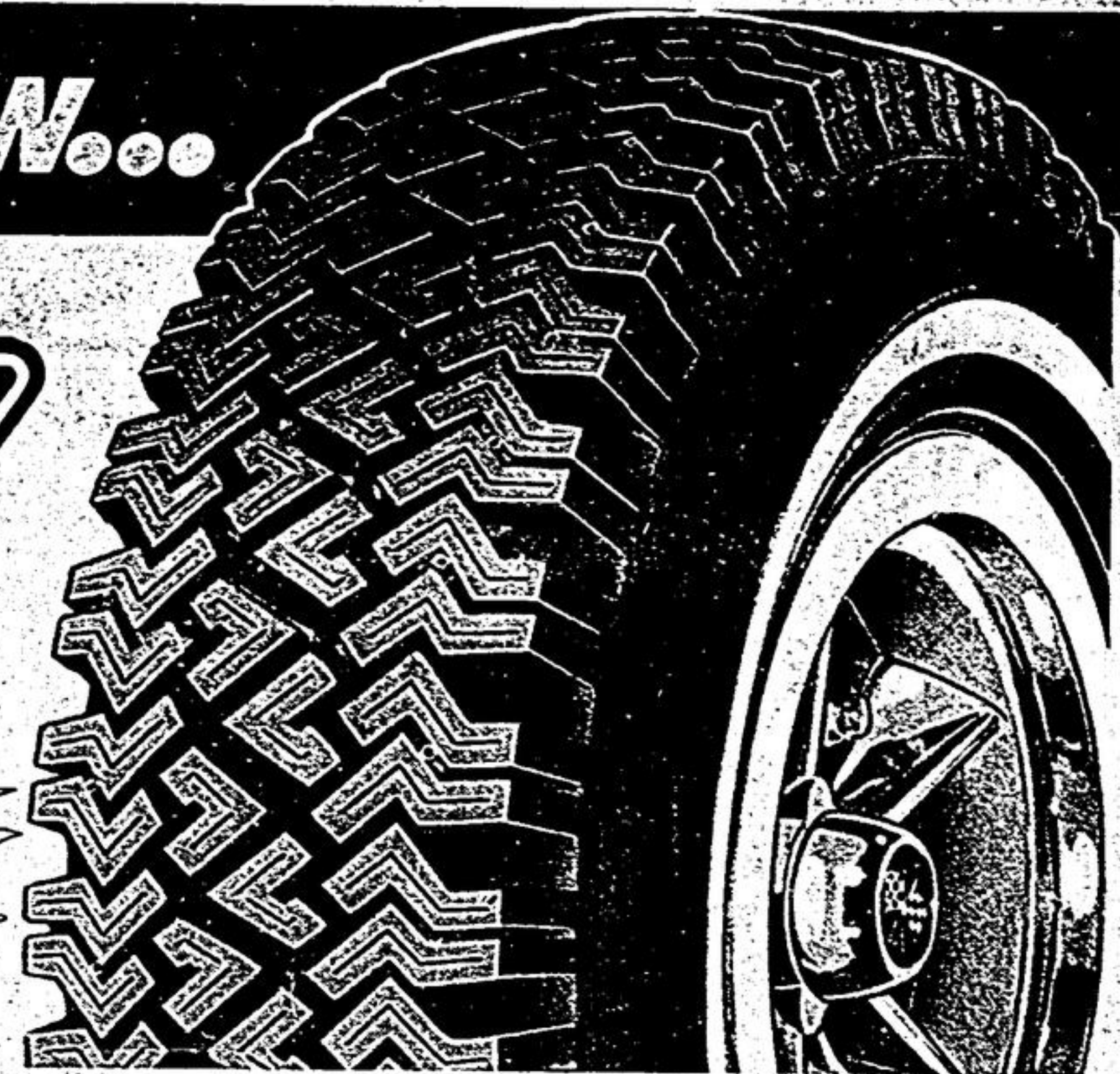


For Positive **GO** on ice or snow...



# Big Paw Traction—2 big treads

HIWAY-BYWAY WINTER RADIALS		
WHITEWALL 5-Yr. Road- Hazard Insured	With Textile Belts	With Steel Belt and BIG PAW TRACTION
	2 Tires or more EACH after discount for cash	
SIZE		
165-SR13	38.62†	—
AR70/13 (AR78/13)	35.53	—
185-SR13	42.70†	—
155-SR14	37.52†	—
DR70/14 (DR78/14)	40.37	—
ER70/14 (ER78/14)	41.56	45.36
FR70/14 (FR78/14)	43.65	47.45
GR70/14 (GR78/14)	45.50	49.30
HR70/14 (HR78/14)	53.96†	—
165-SR15	41.32†	—
FR70/15 (FR78/15)	49.59†	—
GR70/15 (GR78/15)	45.50	49.30
HR70/15 (HR78/15)	48.31	52.11
JR78/15	56.62†	—
LR78/15	60.66†	—



5% Discount for  
Cash Payment on  
tires in lieu of  
Bonus Coupons

†Tread not shown

## Hiway-Byway Winter Radials

WITH STEEL BELT and BIG PAW TRACTION

Superb Radial construction with a specially compounded tread that provides Big Paw Traction to grip slippery roads almost like studded tires without added studding-costs.

Each in Pairs after discount for cash

Textile-Belted Conventional Tread Rubber  
Cushioned comfort at high speeds, and a bit lower-priced. Ea. in Pairs after disc. for cash

FR70/14 (FR78/14)  
Whitewall

**47<sup>45</sup>**

FR70/14 (FR78/14)

**43<sup>65</sup>**

## Winter Express Polyflex with Big Paw Traction

Polyester-Belted Nylon topped with Big Paw stud-like grip from a unique blend of natural and synthetic rubber.

F78/14(775/14) White, Ea. in Pairs after disc. for cash

**25<sup>60</sup>**

Two other constructions — same proven tread design

4-PLY NYLON BLACKWALL-F78/14, Ea. after discount for cash

**22<sup>75</sup>**

4-PLY POLYESTER WHITEWALL-F78/14, Ea. in Pairs after discount

**24<sup>65</sup>**

## WINTER EXPRESS in 3 CONSTRUCTIONS

5-Year Road-Hazard Insured SIZE	4-Ply Nylon Blackwall a low- priced snow tire	4-Ply Polyester Whitewall for no flat- spotting	2+2 Polyester Belted Nylon Whitewall BIG PAW TRACTION
	EACH	2 Tires or more EACH after discount for cash	
600/12	—	21.23	22.18
A78/13(600/13)	17.95	19.85	20.80
B78/13(650/13)	18.90	20.80	21.75
C78/13(700/13)	19.90	21.80	22.75
C78/14(695/14)	20.52	22.42	23.37
E78/14(735/14)	21.66	23.56	24.51
F78/14(775/14)	22.75	24.65	25.60
G78/14(825/14)	24.32	26.22	27.17
H78/14(855/14)	25.55	27.45	28.40
560/15	18.81	20.71	21.66
F78/15(775/15)	23.27	25.17	26.12
G78/15(825/15)	24.60	26.50	27.45
H78/15(855/15)	26.41	28.31	29.26

Budget-Terms available with your Canadian Tire Card

NO CHARGE FOR PASSENGER TIRE INSTALLATION on most standard rims, when you buy our Dill or Schrader Valve at our regular catalogue price of \$1.00. We must install our new tire and valve together. A tire isn't new unless the valve is, too. Static-Balance, tire and wheel \$1.00.



# TURBOFIRE

... a Good Start with Early Bird Values



Regular \$35.95

**31<sup>95</sup>**

With Trade

GROUP 22F

Regular \$38.95

**34<sup>95</sup>**

With Trade

GROUP 24 & 24F

Regular \$42.95

**38<sup>59</sup>**

With Trade

GROUP 27 & 27F

Turbofire, a super battery that delivers more power to cars or station wagons with extra accessory loads. Great buy in the long run! 10-2264X

EARLY BIRD VALUES!

## Dual Duty

Tough, thinwall polypropylene case with heavy-duty features. 10-2261X

Group 22F

Regular \$29.95

**26<sup>95</sup>**

With Trade

Group 24 & 24F

Regular \$32.95

**29<sup>59</sup>**

With Trade

Group 27 & 27F

Regular \$36.95

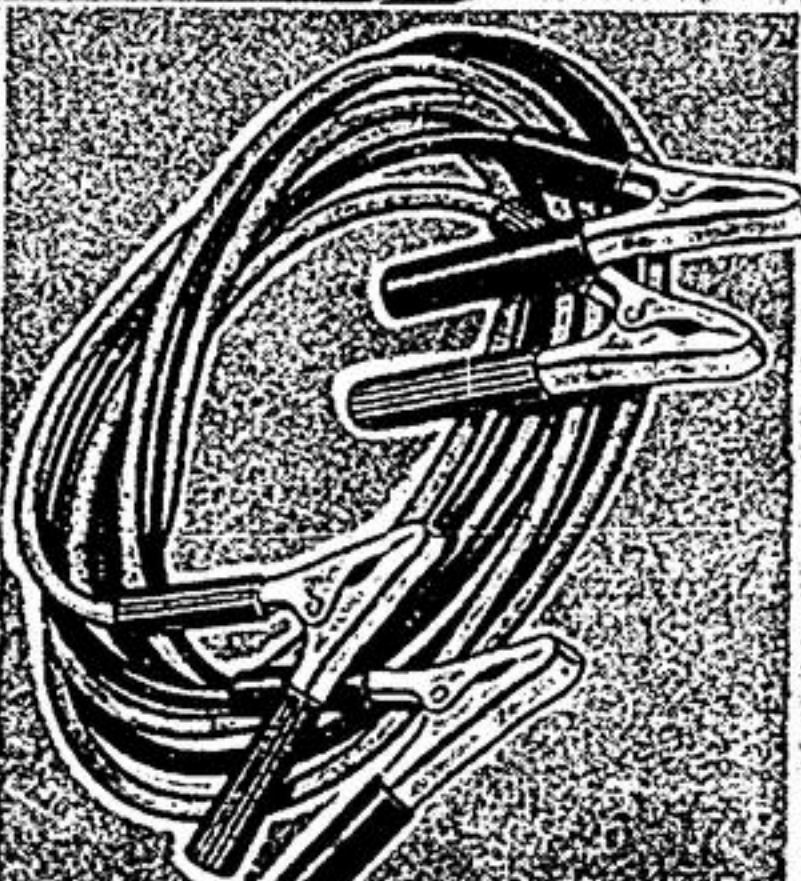
**32<sup>95</sup>**

With Trade

Group 22F: • 69-75 Gremlin, Hornet, Matador, Pacer 6-cyl. and V-8 290 and 304 engines • 62-70 Chev. II 6-cyl. and V-8 283 and 307 engines • 64-69 Mustang 6-cyl. and V-8 260, 289 and 302 engines.

Group 24 and 24F: • 67-75 Valiant 6-cyl. and V-8 273, 318 and 340 engines • 62-70 Full-Size Chev. (top terminals) V-8 327, 350, 396 and 400 engines • 65-75 Full-Size For V-8 351, 352 and 390 engines.

Group 27 and 27F: • 64-70 Full-Size Buick (top terminals) V-8 401, 425, 430 and 455 engines • 67-75 Chrysler V-8 426 and 440 engines • 1967-75 Full-Size Mercury V-8 400, 428 and 460 engines.



2-AMPERE, 12-VOLT  
Battery Charger

Reg. \$11.99 **9<sup>99</sup>**

Compact unit with polarity indicator and automatic overload protection. Save \$2! 11-1512

4-GAUGE COPPER WIRE  
Booster Cables

Reg. \$9.99 **8<sup>99</sup>** Pair

Plated to help resist rust, grease and oil. Keep in your trunk for emergencies. 8-foot. 11-1216



Use your **CANADIAN TIRE CARD**