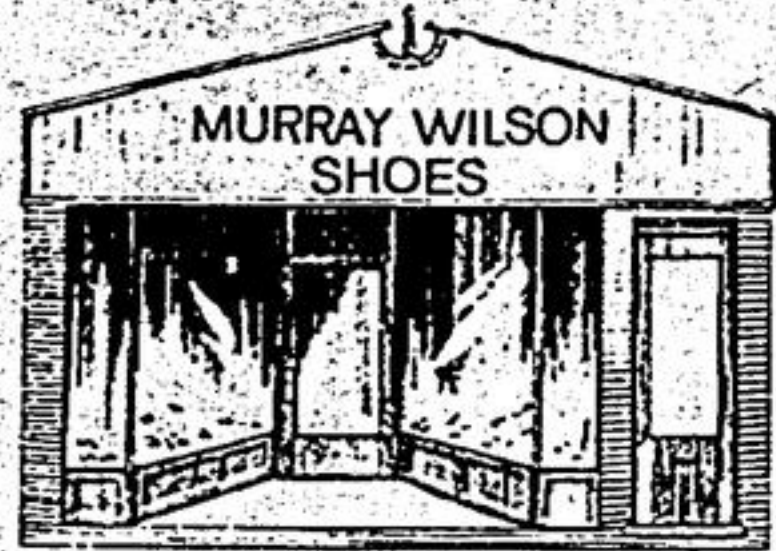




Teen Pick of the Week is Judy Hopper. She is one of three local girls who are official figure skating competition judges, and recently completed her papers and can judge up the third figure. She is a member of the Stouffville Figure Skating Club.

The Tribune - Stouffville "TEEN PICK OF THE WEEK" will receive a \$15.00 gift certificate from Murray Wilson Shoes, Main St. Markham



124 Main St. Markham

"Service, Quality Variety and Value Since 1905"

Many More Styles Available Than Those Shown

Medium Price Selection \$19.98 to \$29.98
Quality Price Selection \$34.95 to \$65.00

McHale FLORSHEIM Daek's
Gale - Hewetson - Valenti

SIZES 7-13
WIDTHS C,D,E,EE,EEE
Not All Widths or Sizes in Every Style

DESIGNER COLLECTION
By McHale FLORSHEIM
Sugg. List Price \$52.00
Our Price \$44.95



MURRAY WILSON SHOES

124 Main St. Markham

294-1189

Free parking at Rear Entrance

Mon. Tues. 9-6
Wed. Sat. 9-6
Thurs., Fri. 9-9

Mon. Tues. 9-6
Wed. Sat. 9-6
Thurs., Fri. 9-9

Catering

• WEDDINGS • RECEPTIONS or PARTIES

You have a choice of CHICKEN, TURKEY, COLD CUTS, HAM

Also Fresh Salads, Rolls, Coffee, Dessert etc.

Dixie Lee Fried Chicken

91 Main St., Stouffville TAKE-OUT 640-1944

Three seek trustee position

Public questions candidates

STOUFFVILLE — A single David is facing two Goliaths in the contest for Whitchurch-Stouffville's one trustee position on the York County Board of Education.

Jennie Bangay, 20, is a part-time student in her second year at the University of Toronto.

Her formidable opponents are Harry Bowes, a former Stouffville businessman, now semi-retired and John McMurray, a Board member for two years in York County, five years on the School Board in Stouffville, and a staff teacher in North York.

So the question remains, is it possible for a "David" of modern times to defeat this kind of opposition? The electorate will be wiser after Monday, Nov. 10.

While Jennie Bangay lacks experience "under fire" at the Board level, she claims her 15 years of involvement "in the system" has given her an excellent insight into its problems. She also feels she has some of the solutions.

"There are parents, businessmen and teachers on the Board," she told an all-candidates meeting in Latham Hall, Thursday, "let's have a fourth point of view, a view from someone who knows what it's like to

learn in the system."

The S.D.S.S. grad and Ontario Scholar took a verbal swing at the Board's published newspaper called "Contact." She feels this media could prove beneficial to parents except "there's nothing in it." She says most students find it so disinteresting, they don't even bother to take it home.

Miss Bangay emphasized the importance of core subjects, particularly, English and Mathematics.

She criticized the inaction at Stouffville's Summitview School in completing improvements that had been recommended as far back as five years ago. She said other projects in the County had received priority rating when, in her opinion, they couldn't compare with problems as experienced at this site.

In an effort to reduce costs, she suggested a cut-back in administrative personnel and some Master Teachers. Referring to the latter, she said: "If they're doing things that are relevant, then keep them, but if they're not, then get rid of them."

On the question of student trips to other countries, she recom-

ended a continuance of this policy but only if such excursions are part of the current curriculum.

On the question of time, she explained that her university work took only two days a week, leaving her sufficiently free to carry out duties as required of a local trustee.

Concerned about cost

Candidate Harry Bowes expressed concern over education costs, both in the \$60 million budget of 1975 and with increases predicted next year. "A 10 per cent budget hike is sufficient," he said, "rather than the 25 per cent that's anticipated."

He described a teacher-trustee relationship as "never better" and suggested that closest co-operation between the two should make for better students.

He voiced objection to the substantial raises Board member had voted themselves in '75. He noted also that a ratio of eight teacher or teacher-affiliated trustees on a Board of nineteen was "high enough."

Mr. Bowes expressed a willingness to spend up to 168 hours a week on trustee business and, if elected, would regard it as a full-time position.

Like Jennie Bangay, he charged the Board

with "continuing to ignore Summitview School, despite its cramped condition."

"They've (the Board) been passing the buck on this thing for the last five years, and likely will for the next five, unless pressured into action," he charged. He referred to one basement classroom in the building as "a dungeon."

On the question of staff, Mr. Bowes pointed to a 15 per cent turn-over in teachers at the conclusion of the June term. Rather than acquire replacements to fill each of these positions, he recommended putting non-teachers, like principals and librarians, back in the classroom. "Some of them don't do anything but mark attendance anyway," he said. He mentioned other areas also, where cut-backs in cost could be accomplished.

With respect to Master Teachers, he said their use was questionable at the secondary level, but helpful in the elementary classroom.

Feel the crunch
Candidate John McMurray said that most people fail to realize that up to 60 per cent of

local tax dollars go to education. He noted that while a plea had been made to elect a "businessman" to the Board from Whitchurch-Stouffville, it was also a "businessman" who had advocated a 100 per cent increase in the members' honorarium. "It's not a full-time job," he argued, "so there shouldn't be that kind of monetary attachment."

The speaker urged cut-backs in spending wherever possible and called on the people to co-operate in achieving this end. "If we do not, then the taxpayer is going to feel quite a crunch," he warned.

He referred to inside conditions at Summitview School as "deplorable."

Mr. McMurray agreed with candidate Jennie Bangay that more stress should be placed on "core subjects," so that young people might better adapt to the world they must live in.

He supported the role played by Master Teachers saying they tended to present "fresh ideas" to the school.

Are to-days teachers happy? he asked. They should be, he replied, the negotiating committee was pretty good to them. He noted, however, that he wasn't so sure the same atmosphere prevailed among students.

Mr. McMurray, the Town's trustee representative during teacher strike of '74, expressed a fear that the same problem could occur again.

NOTICE
CORRECTION IN TIME OF SANTA CLAUS PARADE
STOUFFVILLE - 2 P.M.
MARKHAM - 10:30 A.M.

Heated exchange over co-ordinator's salary

STOUFFVILLE — A brief but heated exchange between a Whitchurch-Stouffville resident and one of three persons seeking election to the York County Board of Education, Nov. 10, highlighted an all-candidates meeting in Latham Hall, Oct. 30.

The verbal "explosion" occurred when a question from the floor touched on the salary paid to the co-ordinator of student trips.

William Morley quickly protested, claiming the employee referred to was not in the audience and the amount of his salary should not be revealed. He asked the moderator to rule the query out of order and his request was granted.

However, Harry

Bowes, in making his reply, mentioned the figure and further stated that, in his opinion, such excursions could just as well be handled by a Travel Agent.

Mr. Morley became incensed. He called it "a dirty trick" and demanded a retraction.

The candidate refused, claiming the stipend to be "taxpayers

The moderator cut off the controversy, saying the figure was now a matter of public record.

Mr. Morley said later that salaries of administrative personnel were available to anyone who wished to obtain this information at head office. He argued, however, that it served no useful purpose to make such statistics known at that kind of gathering.

MARKHAM'S QUALITY JEWELLER
Barthau
JEWELLERS
Lloyd Barthau
Diamonds, Royal, Doulton, Waterford, Crystal, Watches, Jewellery
76 Main St. Markham 294-4844

BUSINESS DIRECTORY

Public Accountants
BREGMAN, SHARPLEY & KUSATZ
Chartered Accountants
22 Main St. W., Stouffville, Ont.
Resident Partner: S. Kusatz, C.A.
440-1991 944-1370

DAVID A. HUNTLEY
Chartered Accountant
641 Davis Drive, Newmarket, Ont.
895-9457 884-8902

LEONARD R. ROSENBERG & ASSOCIATES
Chartered Accountants
84 Yonge St. S., Aurora
Phone 887-5720, 889-2741

FUNERAL DIRECTORS
O'NEILL
Funeral Home
STOUFFVILLE
Funeral Director
MRS. FAY MINTON
Continuous Telephone Service Day or Night
Ph. Stouffville 640-2855

Ontario Land Surveyors
MALCOLM PHILLIPS
ONTARIO LAND SURVEYOR
142 Main St. W., Stouffville
PHONE 640-4031

Optometrists
F. RICHARD BLACK, O.D.
OPTOMETRIST
STOUFFVILLE MEDICAL CENTRE
For appointment 440-3723
Hours: 10 a.m. - 8 p.m. Every Tuesday

Today's way is knits.

Take a good looking comfortable knit that goes everywhere you do and is truly machine washable and you've got Kitten Knits. Knits unique Trevira Polyester and wool blend that is today and everyday.



Skirt No. 37 \$24.00
Shirt No. 49 \$26.00
Cardigan No. 642 \$22.00

MARY-LYN SHOP
128 Main St., Markham 294-3282

TIME TO GET BUSY THE SANTA CLAUS PARADE NEEDS YOUR SUPPORT!



The Kinsmen Club of Stouffville is again organizing this year's Santa Claus Parade. The date is Saturday, November 29 Stouffville 2:00 p.m. and Markham 10:30 a.m.

Members hope to make the procession a success, but this is possible only through the co-operation of the entire community. Schools, service clubs, business places and individuals are urged to lend support!

FREE CANDIES FOR THE KIDS! CASH AWARDS FOR BEST FLOATS CLOWNS AND RIDERS NEEDED:

If you wish to participate in the Stouffville Santa Claus Parade contact

BOB LeMOTTEE At 640-1088 Day or evening

OR IN MARKHAM CONTACT:

GORD LANDON at 294-3458 Day or Evening

YORK COUNTY BOARD of EDUCATION

- 7 years Trustee Experience
- Proven Integrity
- Genuine Concern



ELECT — JOHN C. McMURRAY
Trustee for Whitchurch-Stouffville

MONDAY, NOVEMBER 10th

Leave nothing to chance **VOTE!**

Polls open 11:00 a.m. - 8:00 p.m. Tel: 640-2435