

Barbara Sibbick

REAL ESTATE LIMITED, REALTOR



WILL YOU ALWAYS HAVE A NICE PLACE IN WHICH TO LIVE?
If you are trying to decide when to buy your home... **THE TIME IS NOW.**
With the high probability of continuing inflation, the down payment you have now, may be progressively more difficult to increase in the months ahead... consider too, as the value of a home you may purchase NOW goes up, the monthly cost of carrying it, will remain the same for the term of the mortgage.

IF YOU DECIDE YOU REALLY WANT ONE, YOU CAN PROBABLY AFFORD A HOME OF YOUR OWN.

If necessary, cut back on non-essentials... cut back on extras... tighten your belt a little... **MAKE THE CHOICE TODAY.**

TWO STOREY FAMILY HOME
Sited on a corner lot — focus on 4 bedrooms, family kitchen, finished rec. room with fireplace — close to plaza and schools.

TRI-LEVEL SIDESPLIT
Goodwood — Focus on 1/2 acre of prime location — bright spacious living and dining rooms — finished recreation room — focus on quality.

GRACIOUS VICTORIAN HOME
Stouffville Town — focus on elegance — spacious living room with fireplace and imported French mantle — separate formal dining room — large family kitchen — a home you will be proud to own.

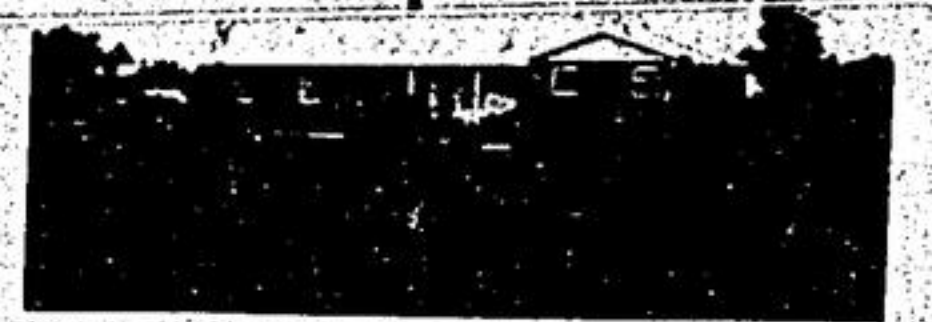
Remember — **HAPPINESS IS... MAKING SURE THAT YOU AND YOUR FAMILY WILL ALWAYS HAVE A NICE PLACE IN WHICH TO LIVE.**



HAPPINESS IS...

BARBARA SIBBICK REAL ESTATE LIMITED 294-4707

Snelgrove REALTOR



1.3 ACRE WITH CUSTOM BACK SPLIT
In excellent rural Unionville location, the home has 5 bedrooms, family room with walk-out to large cedar deck overlooking pond on property. Many extras including wool broadloom. Must be seen to have full appreciation of value. Asking \$149,000.00. Call Jeanne Palfrey 297-4770.

HORSE FARM
As you like it! \$89,000.00. A gentle rolling 10 acre parcel waiting for your designs. Bethesda side road area, artesian pond section, homes of \$200,000. in immediate area. Easy financing. Call S. Lowe 297-4770.

FOUR BEDROOMS \$55,900.
Unionville townhouse. \$5,000.00 or more down and financing available at well below current rate. Five appliances included in this sparkling end unit. Act quick — it's a good deal!! Call Tim Crowley 297-4770.

LISTINGS INVITED
297-4770 or 887-5555
4360 Highway No. 7, Unionville, Ontario

21. Articles for Sale 21. Articles for Sale

Organ and Piano Sale

Organs Conn, Lowrey, Wurlitzer, Galanti.

Pianos Sherlock-Manning, Mason & Risch Wurlitzer

- No high pressure
- No inflated list prices
- Family owned and operated
- 30 years in this business
- Organs priced to suit your budget
- Large music selection
- Bank terms

Ponting's Music Centre

Don Mills Rd., straight east of Newmarket
Phone 895-6311

FULLER BRUSH RESIDENT DEALER

housekeeping, cosmetics, and grooming aids. For brochure phone Art Tremblay

640-1115.

RE-UPHOLSTERY SALE

SOFA
as low as **\$149.00**
FREE ESTIMATES
Phone: **751-0696**

NOR-DEN INTERIORS

1996 Lawrence Ave. E. (just W. of Warden)

15. Coming Events

GARAGE SALE — Saturday, November 8, 12:00 noon to 4:00 p.m. Hwy. 48, 31 mile north of Ballantrae. Furniture, handcrafts, antiques, etc. Refreshments.

16. Births

LEE — Sharon and Bob are happy to announce the safe arrival of Sherri Anne, 5 lbs. 14 1/2 ozs. at Burkes Falls, Ont., on Oct. 13, 1975. Proud grandparents Mr. Bert Jones of Restoule, Mr. and Mrs. James Lee of Markham, great grandparents, Mr. and Mrs. Bert Lickorish of Stouffville.

19. Deaths

GRANT-William George Tyndall — At Wellesley Hospital Wednesday October 22, 1975 after a prolonged illness, beloved husband of Joan and dear father of Jamie, Timmie, Lyn Ann and Michael. Son of the late Mr. & Mrs. Kipling A. Grant of Cashel. Interment was at Creemore, Ontario Saturday October 25, 1975.

20. In Memoriam and Cards of Thanks

To our many friends, neighbours and relatives, I would like to express my sincere thanks and appreciation for the concern, visits, cards, gifts and phone calls I received during the month in hospital and since returning home. It has all meant a great deal on my road to recovery.
Cyril Bleby.

21. Articles for Sale

YEOLDE SECONDHAND SHOP.
Green & white barn hide. Lobliaws, south end of Aurora
FREE PICKUP
727-8823
MON. TO FRI.
10 a.m. - 8 p.m.
SATURDAY TO 4 P.M.
SUNDAY 12 NOON TO 4 P.M.
BLACK & White Television Philco new condition, 3 month guarantee \$150.00. Clothes dryer Ingills good shape \$100.00. Exercise 2 speed electric cost over \$350.00 — \$200.00. Smith Corona Silent typewriter just overhauled \$45.00. 640-2285.
PAIR snow tires mounted on rims to fit Chrysler H78 (70) X-15 Dunlop CW44. Cost \$93.00 Have gone less than 1,000 miles. \$50.00 pair. Phone 649-5401.
CONTENTS: Quantity of bunk beds, matts beds, and captain's beds, cash and carry. Liquidators, 3362 Yonge St. 488-7911.

TAYLOR — In loving memory of a dear father and grandfather. James Alfred, who passed away October 30, 1970.
He left us quietly, his thoughts unknown.
But left us a memory, we are proud to own.
So treasure him Lord, in your garden of earth.
For when on earth he was one of the best.
Lovingly remembered by daughters Evelyn, Edna, Jean, Shirley and families.
HOOK, Robert — In loving memory of a dear husband and father who passed away Nov. 1, 1974.
As time unfolds another year
Memories keep you ever near.
Silent thoughts of times together
Hold memories that will last forever.
Sadly missed by wife Maggie, Harold and Ella.
HOOK — In loving memory of a dear Father and Grandfather who passed away November 1st, 1974.
Your presence we miss
Your memory we treasure.
Loving you always
Forgetting you never.
Sadly missed by Eva, Howard and Family.

100' — 1 inch gal. pipe, aluminum awning, 6' X 9', 640-1197.
CONTENTS: Large quantity kitchen sultes, brand new cheap. Liquidators, 3368 Yonge St. 488-7911.
CONTENTS: Large quantity of baby cribs, carriages, hi chairs, play pens, strollers, chest of drawers and dressers. Cash and carry. Liquidators, 3368 Yonge St. 488-7911.
MICROWAVE oven, almost new, 294-1815.
LUMBER FOR SALE
2x2 — 4c lin. ft.
2x4 — 8c lin. ft.
2x6 — 15c lin. ft.
2x8 — 22c lin. ft.
2x10 — 28c lin. ft.
2x12 — 42c lin. ft.
4x4 — 24c lin. ft.
SPECIAL 2x2, 6 ft. 20 cents each, 2x6 — 6 ft. 40c each. Good grade, economy utility spruce.
6x6 rough hemlock 60c lin. ft. **PLUS TAXES** — Ratcliff Industrial Yard, 3 miles west of Stouffville, 640-2351.

'N' SCALE railroad, complete on board, 6 ft. X 2 1/2" all scenery, etc. and wired. \$400.00. Call 640-3264 after 6:30.
BASS guitar (electric) and case, used twice, cost \$225.00, will sell \$125.00. Call 887-5488 after 6 p.m.
LARGE dual therm space heater with blower fan, also firewood for sale. 640-3417.

ORIGINAL old pump organ about 100 years old, beautifully carved wood, good condition, \$495.00. Also Jacques & Hayes sofa, good condition. \$250.00. Phone 640-5145.

ANTIQUE Kitchen cabinet, glass doors, floor bin, etc. \$100.00. Old style wooden bed, double, complete, \$65.00. Call 640-5879 after 5:30 p.m.

BUILDER'S OPPORTUNITY
Quality hand hewn pine beams (large slanting barn roof and frame only. Various sizes 3 x 5 inches to 12 x 12 inches. Must be removed Reasonable 297-1761. Unionville area. 2w22

SMALL mobile crane, ideal for garage. Stratton Hydro Crane model 102, 1 ton capacity. Call after 6:00 p.m. 294-0712.

Firewood
Hardwood Mixture \$27.00 a face cord
Delivered
640-3208

WHITE Elna sewing machines parts & service to all makes. Trade-ins accepted. 125 Main St. Markham 294-6800. TF36

FURNISHINGS clear out — clear out from factory show rooms, apartments, townhouses (used for display purposes only) lamps, stereos, T.V.'s Air-conditioners, rugs, chesters, etc. Also new merchandise available at substantial savings. Call now 266-0634, 266-1559, 266-2547. TF15

STOUFFVILLE PRINTING & Office Supplies
153 Main St. W. 640-2612
* Business forms * Cards * Letterheads
Complete line of Office Furniture and Supplies

Fred JACKSON & Sons FLOOR COVERINGS
Can have your loose rugs and venetian blinds steam cleaned or shampooed.
OFFICIAL AGENT FOR Frank Steele Enterprises
OTHER SERVICES AVAILABLE
640-3884
23 MAIN ST. W. STOUFFVILLE, ONT.
Free Estimates

22. Articles Wanted
PINE SHAVINGS Bulk and Bagged Call 653-0722
FURNITURE household contents wanted cash. John's Hideaway Furniture 294-3352. TF2E
HIGHEST cash prices or trace value paid for used furniture and appliances. Bricks Furniture 428-4175. TF23
WANTED — Antique furniture and Old household articles. Honest prices paid. Bob Young 640-4313. TF16

26. Help Wanted
BOOKKEEPER required to work with Chartered accountants' office. This position offers an interesting and varied work load for an individual with well founded experience. Telephone for appointment: Leonard R. Rosenberg & Associates Aurora 727-9451. 2W23
QUALIFIED Nursery School teacher with experience — training Trillium Nursery School, 297-2465.

26. Help Wanted
GRADUATE or finalist required by chartered accountants office. All replies will be kept in strict confidence. Telephone for appointment 727-9451 or write to Leonard R. Rosenberg & Associates 84 Yonge St. South Aurora LAG 1M2. 2W23
STOCKKEEPER
There is a vacancy for an experienced stockkeeper. Apply in person to Emerson Electric Canada Ltd., Hwy. 48, Markham 297-2330.

26. Help Wanted
PART time cashier wanted, good wages, good working conditions, wanted for week nights and weekends. Apply Personnel Dept. Canadian Tire Stouffville.
OPENING for young person for training as mechanic in the Agriculture Equipment field. Stouffville Area. This is a permanent and progressive position. Good starting salary. Apply box 2099 The Tribune.

PROFESSIONAL couple seek high quality day care for 18 month and 3 year old in our home. Tuesday, Wednesday and Thursday weekly, 8:30 a.m.-5:30 p.m. references, call 640-2513 after 6 p.m.
WATKINS' Products since 1868 offers opportunity to men, women full or part time as dealer or distributor in your community. Write Ray Raymond, sales manager 429 Dundas East, Toronto. TF18

22. Articles Wanted
LIGHT fixtures, silver plate, china, metal bed, chairs, small furniture, old, any condition. Private. 1-261-8460.
LADIES figure skates sizes 8 and 8 1/2. Also, Apple, older, press in working condition. 640-1331.
26. Help Wanted
WAITRESS — waiter wanted full-time. Hours 7-4 Monday to Friday. Call 887-5150 Halfway House

SERVICE DIRECTORY

<p>E * L - CHESTERFIELD REPAIR SERVICES FAST - FRIENDLY - RELIABLE SERVICE CALL 640-3713 ALL WORK GUARANTEED REPAIRS DONE ON PREMISES</p>	<p>SPACE FOR RENT</p>	<p>ADVERTISE WEEKLY</p>			
<p>PENNANEN ROOFING INDUSTRIAL & RESIDENTIAL FLATS Repairs to all types of roofs Call Glenn 640-3926 STOUFFVILLE</p>	<p>Henry's Auto Electric NEW LOCATION 1 mile west of Ballantrae off the Aurora Sideroad. Look for the sign south side. For the best in generator, alternator and starter repairs. Plus tune up. Call 640-2677 6 days a week, noon Sat. YORK SPRING SERVICE Tandem Bushings AURORA 1-727-6011 TF42</p>	<p>UPHOLSTERING Finest of Craftmanship and materials of your choice, fast 3 day service. Reasonable rates. Free no obligation estimates. Pickup and delivery. All types of repair work, no job too big or too small. Specializing in antiques and custom work. Call Hudson Upholstery Markham 294-0859</p>	<p>Carpentry Contractor and Remodelling Specialist Gord Brook 649-2839 TF20</p>	<p>CUSTOM CARPENTRY Decks, Rec Rooms, Kitchens, Custom Cabinets. Free Estimates Roger Humphries 294-5696 TF6</p>	
<p>BALLANTRAE CONTRACTING LTD. • Additions • Renovations • Concrete Work • New Homes, • Barns Etc. FOR ESTIMATES CALL ARCHIE PATERSON 640-4758</p>	<p>BACKHOE & Bulldozing Trenching, septic tanks, basements, grading. Free estimates 640-5192 TF14</p>	<p>PATIO SAND Driveway Stone & gravel Call Bill Davison 294-2081 Complete editorial services at reasonable cost. Books — Articles — Reports — Layouts, etc. 649-2184</p>	<p>FOUR SEASON ALUMINUM SALES Phone 294-5606 Alcan Siding WINDOWS — DOORS AWNINGS FASCIA SOFFIT EAVESTROUGH AL GLENN Stouffville, Ont.</p>	<p>NORMAN MAY CONSTRUCTION Home Improvements, masonry and carpentry. Brick or stone fireplaces. Plastering 655-4320 T.F.</p>	<p>NICK ROHWER CONSTRUCTION Custom Homes Additions & Alterations Phone 649-2411</p>
<p>JOHN T. DRYNAN Plumbing & Heating Limited RESIDENTIAL — COMMERCIAL — INDUSTRIAL Complete installations — repairs. Also large showroom for all your plumbing needs. Call 297-2921 or 294-4074 Mef. Lic. No. PH79 11 Laidlaw Blvd. Markham, Ont.</p>	<p>Grading Post Hole Digging BACK-FILLING LORNE SCHELL 640-2845 TF51</p>	<p>COMTECH electric plumbing and heating ltd. FORMERLY WATTS ELECTRIC Electric Plumbing & Heating Contractors Retail Electrical Supplies Appliance Sales and Service 106 Main St. North Markham 294-3642</p>	<p>J. S. TAYLOR Heating Air Conditioning Contractor Phone Stouffville 640-1908 Furnaces & Ducts Oil Burners Hot Water Boilers Humidifiers</p>	<p>TILE SETTING CERAMIC AND MOSAIC also rrpair work 640-2040 T.F.49</p>	<p>A.A.A. PLUMBING Stouffville Goodwood New construction Remodelling Alterations and Repairs Pumps and Pressure Systems Residential Commercial 294-1414</p>
<p>STOUFFVILLE PRINTING & Office Supplies 153 Main St. W. 640-2612 * Business forms * Cards * Letterheads Complete line of Office Furniture and Supplies</p>	<p>Grading Post Hole Digging BACK-FILLING LORNE SCHELL 640-2845 TF51</p>	<p>J. S. TAYLOR Heating Air Conditioning Contractor Phone Stouffville 640-1908 Furnaces & Ducts Oil Burners Hot Water Boilers Humidifiers</p>	<p>JIM WAGG CONSTRUCTION Alterations — Renovations — Additions — Rec Rooms Decks — Fencing, etc. 640-3185</p>	<p>TILE SETTING CERAMIC AND MOSAIC also rrpair work 640-2040 T.F.49</p>	<p>A.A.A. PLUMBING Stouffville Goodwood New construction Remodelling Alterations and Repairs Pumps and Pressure Systems Residential Commercial 294-1414</p>
<p>STOUFFVILLE PRINTING & Office Supplies 153 Main St. W. 640-2612 * Business forms * Cards * Letterheads Complete line of Office Furniture and Supplies</p>	<p>Grading Post Hole Digging BACK-FILLING LORNE SCHELL 640-2845 TF51</p>	<p>J. S. TAYLOR Heating Air Conditioning Contractor Phone Stouffville 640-1908 Furnaces & Ducts Oil Burners Hot Water Boilers Humidifiers</p>	<p>JIM WAGG CONSTRUCTION Alterations — Renovations — Additions — Rec Rooms Decks — Fencing, etc. 640-3185</p>	<p>TILE SETTING CERAMIC AND MOSAIC also rrpair work 640-2040 T.F.49</p>	<p>A.A.A. PLUMBING Stouffville Goodwood New construction Remodelling Alterations and Repairs Pumps and Pressure Systems Residential Commercial 294-1414</p>
<p>STOUFFVILLE PRINTING & Office Supplies 153 Main St. W. 640-2612 * Business forms * Cards * Letterheads Complete line of Office Furniture and Supplies</p>	<p>Grading Post Hole Digging BACK-FILLING LORNE SCHELL 640-2845 TF51</p>	<p>J. S. TAYLOR Heating Air Conditioning Contractor Phone Stouffville 640-1908 Furnaces & Ducts Oil Burners Hot Water Boilers Humidifiers</p>	<p>JIM WAGG CONSTRUCTION Alterations — Renovations — Additions — Rec Rooms Decks — Fencing, etc. 640-3185</p>	<p>TILE SETTING CERAMIC AND MOSAIC also rrpair work 640-2040 T.F.49</p>	<p>A.A.A. PLUMBING Stouffville Goodwood New construction Remodelling Alterations and Repairs Pumps and Pressure Systems Residential Commercial 294-1414</p>
<p>STOUFFVILLE PRINTING & Office Supplies 153 Main St. W. 640-2612 * Business forms * Cards * Letterheads Complete line of Office Furniture and Supplies</p>	<p>Grading Post Hole Digging BACK-FILLING LORNE SCHELL 640-2845 TF51</p>	<p>J. S. TAYLOR Heating Air Conditioning Contractor Phone Stouffville 640-1908 Furnaces & Ducts Oil Burners Hot Water Boilers Humidifiers</p>	<p>JIM WAGG CONSTRUCTION Alterations — Renovations — Additions — Rec Rooms Decks — Fencing, etc. 640-3185</p>	<p>TILE SETTING CERAMIC AND MOSAIC also rrpair work 640-2040 T.F.49</p>	<p>A.A.A. PLUMBING Stouffville Goodwood New construction Remodelling Alterations and Repairs Pumps and Pressure Systems Residential Commercial 294-1414</p>
<p>STOUFFVILLE PRINTING & Office Supplies 153 Main St. W. 640-2612 * Business forms * Cards * Letterheads Complete line of Office Furniture and Supplies</p>	<p>Grading Post Hole Digging BACK-FILLING LORNE SCHELL 640-2845 TF51</p>	<p>J. S. TAYLOR Heating Air Conditioning Contractor Phone Stouffville 640-1908 Furnaces & Ducts Oil Burners Hot Water Boilers Humidifiers</p>	<p>JIM WAGG CONSTRUCTION Alterations — Renovations — Additions — Rec Rooms Decks — Fencing, etc. 640-3185</p>	<p>TILE SETTING CERAMIC AND MOSAIC also rrpair work 640-2040 T.F.49</p>	<p>A.A.A. PLUMBING Stouffville Goodwood New construction Remodelling Alterations and Repairs Pumps and Pressure Systems Residential Commercial 294-1414</p>
<p>STOUFFVILLE PRINTING & Office Supplies 153 Main St. W. 640-2612 * Business forms * Cards * Letterheads Complete line of Office Furniture and Supplies</p>	<p>Grading Post Hole Digging BACK-FILLING LORNE SCHELL 640-2845 TF51</p>	<p>J. S. TAYLOR Heating Air Conditioning Contractor Phone Stouffville 640-1908 Furnaces & Ducts Oil Burners Hot Water Boilers Humidifiers</p>	<p>JIM WAGG CONSTRUCTION Alterations — Renovations — Additions — Rec Rooms Decks — Fencing, etc. 640-3185</p>	<p>TILE SETTING CERAMIC AND MOSAIC also rrpair work 640-2040 T.F.49</p>	<p>A.A.A. PLUMBING Stouffville Goodwood New construction Remodelling Alterations and Repairs Pumps and Pressure Systems Residential Commercial 294-1414</p>

SERVICE DIRECTORY