

MARTIN AUTHORIZED DEALER

ROCK OF AGES

Rock of Ages guarantees every Sealmark memorial not only to you but also to the cemetery where it is erected.

We carry in stock, at all times a large selection of beautiful designs crafted in Granite, Marble or Bronze for your choice. Satisfaction guaranteed. Monuments erected in all cemeteries. Cemetery lettering and renovations. Out of respect and understanding, we refrain from untimely solicitations. When time and circumstances are convenient will you please consult us.

Appointments or Courtesy Car by Request

STOUFFVILLE MONUMENT WORKS

113 MAIN ST. WEST PHONE STOUFFVILLE
640-3643 P.O. BOX 235

ADVERTISE WEEKLY * For Best Results

Listen

to a friend

CFRB 1010
RADIO FOR TODAY

Youths charged in thefts

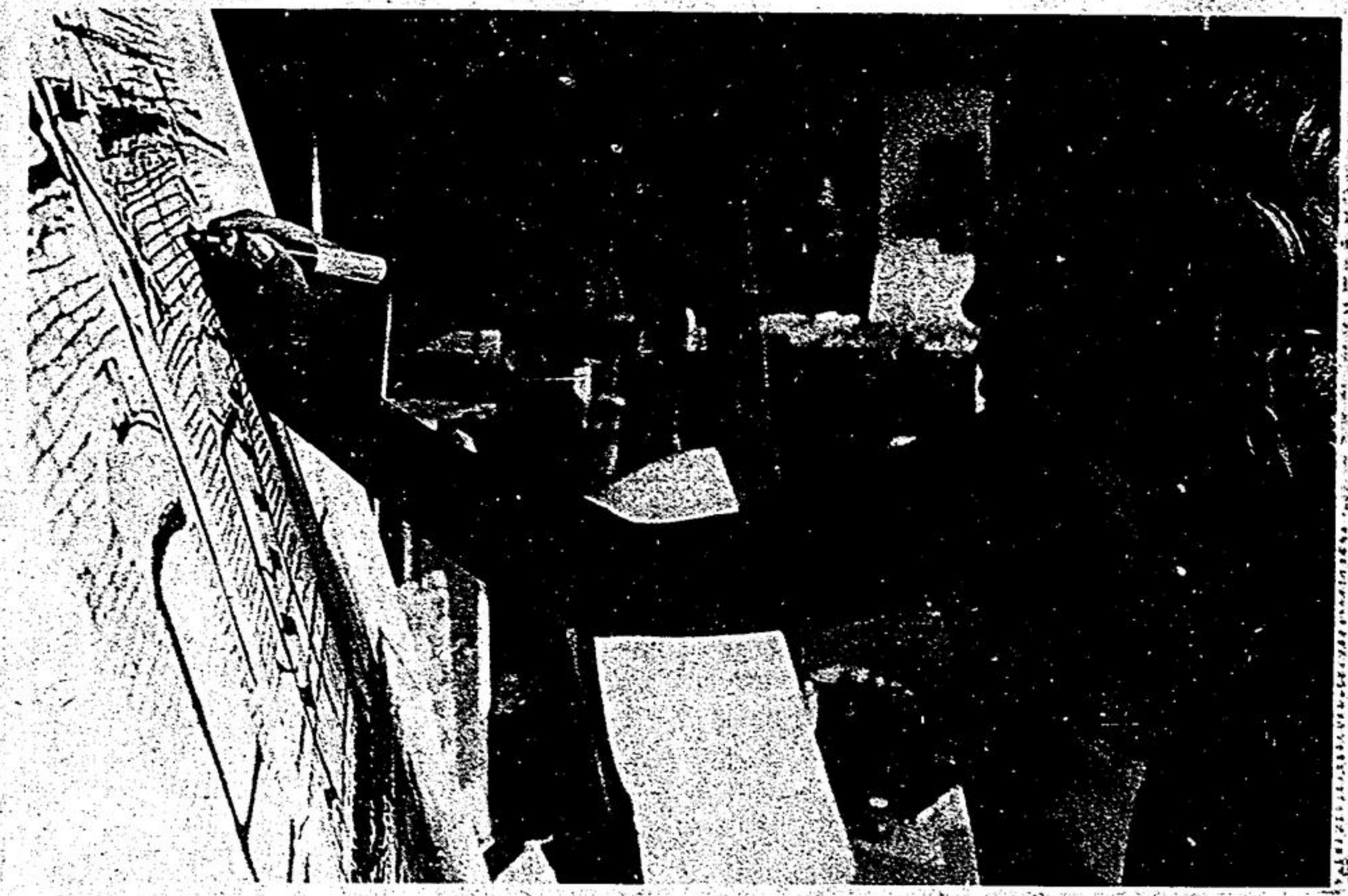
MARKHAM — Two Scarboro youths and four juveniles have been charged in connection with a series of break-ins, thefts and other crimes in incidents in the Sutton-Keswick area and Markham.

The incidents took place Oct. 18. A cottage was broken into at Willow Beach and then a service station was vandalized near Keswick. A car was stolen.

Later that night, vandals forced open the door to a shed at Bruce's Mill Conservation area and stole some auto parts. Attempts were made to open coin boxes at the Markham plaza laundromat and car wash.

A van was taken from Alway Transportation Service, Warden Ave., Scarboro. The entrance gate of the Milne Dam Conservation area on the 7th Line was rammed and grass damaged by car tires.

Police went to the conservation area and arrested two of the youths. Further charges are pending from Metro and Peterboro Police.



Holly Todd, daughter of Uxbridge Councillor Eleanor Todd, works intently on a piece at the Upper Canada Scribble Works. Owner, John Richmond, says that she has a natural flair for the work.

— Paul Yafkah

Scribble Works founder is 'renaissance man'

By DON BERNARD
UXBRIDGE — If the Upper Canada Scribble Works is in a rather unconventional location, it reflects the quiet, unconventional nature of its owner John Richmond.

Mr. Richmond calls himself a "renaissance man", and has been successful in the magazine field and even published a literary newspaper.

The Scribble Works is located on the 6th Conc. of Uxbridge, north of the Uxbridge-Pickering Town Line.

The main activity there is the creation of line drawings. Mr. Richmond is commissioned to design. They are usually of buildings and streets in Toronto.

More than just sketches of stores and shops or large churches, they are caricatures of the subjects. The buildings are deliberately distorted, with walls being

tilted and curved rather than straight.

Mr. Richmond has an assistant, Holly Todd, daughter of councillor Eleanor Todd, shares his enthusiasm for the line drawings. She is an art student at Sheridan College.

Miss Todd worked at the Scribble Works this past summer and commutes on weekends to help out.

Mr. Richmond maintains that she is the first student to really take to the work. She has a flair for it and enjoys it.

He calls himself a "scribe" in the same mould as the medieval monks who slaved over copying manuscripts.

However he does have impressive credentials in the publishing field. He served as art director for the now-defunct Star Weekly and originated the Canadians Homes.

The art director has

overall charge of the layout of a magazine.

He was also a consultant for the Imperial Oil Review, a literary and art magazine produced by that corporation.

But 10 years ago, John Richmond had a dream. It was to start an art school in the wilds of Uxbridge Township. He acquired the land and built a studio, before finding out that an expected Canada Council grant was not forthcoming.

The art school failed to come about, but he remains.

His newspaper Gambit was unusual in that it was published quarterly and contained work by some of Canada's best literary people including Kildare Dobbs and Bob Fulford. It ridiculed most of the standard practices for newspaper layout.

The line drawings have always been a part

of his work. They are done on paper or canvas, with black felt markers. The colors are added later and give the work mood or atmosphere.

He exhibits his work in a large showcase at the Toronto-Dominion Centre in Toronto.

The quietness of rural Uxbridge seems the perfect setting for John Richmond, soft-spoken with a wry sense of humor and the philosophy that art can be both humorous and fun.

That sums up the Scribble Works.

Devout follower moves on

STOUFFVILLE
Laura Jervis passed away at the Scarborough Centenary Hospital on Oct. 22, in her 89th year. She was born and raised in Clinton, Ontario, where she spent most of her life. She came to the Stouffville area about ten years ago.

For the past 30 years she has shared her life with Mrs. Ella Woolven. They lived on South St. She was the last surviving member of her immediate family.

She had a distinct poetic flair and, on short notice, could write a poem for varied occasions.

While she had many secondary interests in her life, her main interest was being a devout follower of her Master, Jesus Christ, whom she faithfully represented.

Her life is beautifully summed up in the words, "She went about doing good."

She was the oldest member of the Bethel Assembly of God. The first service in their new building was arranged to be held on her birthday, three years ago.

Funeral service was from the church on Friday evening, with a second service at the Clinton Pentecostal Church on Saturday, with interment in the Clinton cemetery.

Pastor Minaker conducted the Stouffville service and assisted Pastor Hoy in Clinton.

Ballinger gets 'fill-in' position

UXBRIDGE — Regional councillor Bill Ballinger has been appointed vice-chairman of Durham Region planning and development committee.

The job is basically a "fill-in" position, according to Mr. Ballinger.

Commando Du-All Services
Div: — Commando Maintenance
Goodwood P.O.
IN NEED OF:

- * Floor Waxing Service
- * Wall Cleaning
- * Eaves/Trough Cleaning
- * Homes
- * Special Cleanup
- * Rug Cleaning
- * Buildings
- * Offices

We also do Water pump Maintenance and have Boat and Trailer Storage
(Indoor and Outdoor)
EXPERT SUPERVISION
GIVE US A CALL AT 640-3732 or 640-5951

TOWN OF WHITCHURCH—STOUFFVILLE

ASSESSMENT COMMISSIONER'S LIST

SCHOOL SUPPORT

The Assessment Commissioner's List for the Town of Whitchurch-Stouffville has been posted in my office, in accordance with Section 516 of The Municipal Act, on Friday, October 17th, 1975.

The period for correcting enumeration data and any alteration in school support shall be Monday to Friday, 9:00 a.m. to 5:00 p.m. until 5:00 p.m. Friday, November 14th, 1975.

Applications for alteration of school support shall be on forms, available at the Municipal Offices, 19 Civic Avenue, Stouffville, Ontario.

R. E. Corner, Clerk

You can have clean, soft-crystal clear water for as little as **\$8.00** Per Month

WITH A WATER CONDITIONER FROM: WATER TREATMENT

NO LONG TERM CONTRACTS

- Eliminates Cloudiness spots On Glasses And dishes
- Brightens Dull, Hard To Manage Hair
- Eases Scraping - Pulling And Rough Shaving
- No Bath Tub Rings
- Ends Rust Stains On Fixtures And Laundry
- Eliminates Accumulation Of Lime

CALL NOW! 640-5699

STOUFFVILLE BAKERY CHRISTMAS CAKE

10% OFF Special NOVEMBER ORDERS

★ Festive Light
★ Rich Dark (Iced or Plain)

ORDER NOW!

OFFER GOOD UNTIL NOVEMBER 29th

Richmond Hill Plaza 884-6300
Stouffville Main St. 640-3146
Markham Sherwood Plaza 294-1673

Like A Good Neighbour State Farm Is There. For all your insurance needs see **KEY SHEPHERD**

294-1562
State Farm 27 Parkway Ave.
Companies Canadian Head Office Scarborough Ontario

AUSTIN MARINA GIVES YOU A GREAT DEAL AND A GREAT DEAL MORE

66 Amp Hours Battery
Race Proven MGB 1800 cc Engine
Manifold Heater
1 1/2 HP Starter Motor
Twin Windtone Horns
Torsion Bar Suspension
Heavy Duty Heater & Defroster
Twin Door Mirrors
Day & Night Mirror
Tinted Glass All Around
Reclining Front Seats
Rear Seat Arm Rest
Heated Rear Window
13 cu. ft. Trunk with Light
Twin Back Up Lamps
Rear Door Kiddy Safety Locks
White Wall Radial Ply Tires
Undercoating
Power Disc Brakes
Rack and Pinion Steering

AUSTIN MARINA 4-DOOR SUPER DELUXE SEDAN

WHEEL BASE 96"
OVERALL LENGTH 172"
OVERALL WIDTH 64.8"

IT PAYS TO DRIVE A MARINA FROM **LIMBERT'S** EAGLE ST. NEWMARKET

ALL FOR ONLY **\$3425.00**
895-3222 or 884-6771