

MULTI-CORD

Best Bias Belted tire made . . . Study the facts, we know you'll agree

CANADIAN
TIRE

2+2+2 Multi-Cord
37,000 Mile
Treadwear-Rated
F78/14(775/14) WHITEWALL
33.96
2 or more
EACH
AFTER DISCOUNT FOR CASH

Here are the Facts

MULTI-CORD in 2 revolutionary Kevlar-Belted constructions is already winning motorists and making tire history.

KEVLAR (Fibre B)—the amazing new Aramid cord developed by Du Pont expressly for tires—provides longer mileage and a smoother ride. Won't kink like steel or fail like glass under abnormal compression. Five times stronger than steel; its relative lightness means less unsprung weight per wheel, resulting in fewer front-end repairs. Kevlar-Belts on "Multi-cord" plies add up to super tires!

2 + 2 + 2 MULTI-CORD:

2 body-ply of Du Pont 66 Nylon for extra safety (see Nevada Test Results in our stores) plus 2 body plies of non flat-spotting Polyester plus 2 belts of Kevlar to hold tread firm from squirm and achieve almost double the mileage of many other tires. A big 37,000-Mile Treadwear-Rating.

WHITEWALL WIDE-TRACK SIZE	2 + 2 + 2 MULTI-CORD Kevlar (Fibre B) Belted		2 + 2 Multi-Cord Kevlar-Belted
	2 TIRES or more EACH after discount for cash		
A78/13 (600/13)	—	—	24.18
B78/13 (650/13)	—	—	25.60
C78/13 (700/13)	—	—	26.50
C78/14 (695/14)	—	—	26.98
E78/14 (735/14)	32.87	—	28.12
F78/14 (775/14)	33.96	—	30.16
G78/14 (825/14)	35.05	—	31.25
H78/14 (855/14)	37.48	—	32.73
G78/15 (825/15)	36.00	—	31.25
H78/15 (855/15)	37.71	—	33.91
L78/15 (915/15)	40.75	—	—

SAVE MONEY ON 2 + 2 MULTI-CORD:

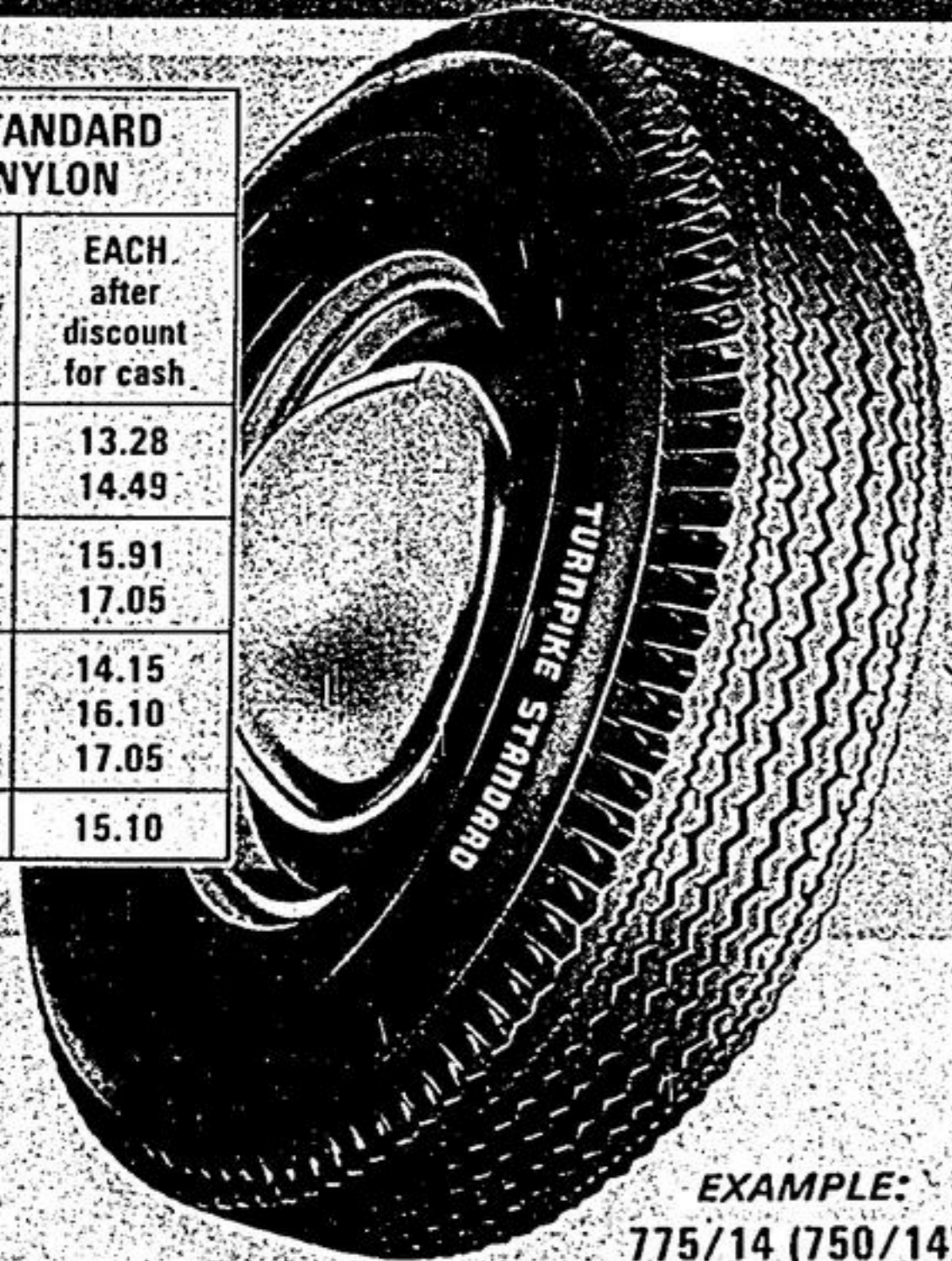
A simplified construction that retains most performance features of its big brother 2+2+2—but at considerably lower cost. Instead of Polyester—2 giant Nylon plies are used with 2 belts of the fabulous Kevlar. 33,000-Mile Rating.

2+2 Multi-Cord
33,000 Mile
Treadwear-Rated
F78/14(775/14) WHITEWALL
30.16
2 or more
EACH
AFTER DISCOUNT FOR CASH

5-YEAR
ROAD-HAZARD
INSURED

Non-Belted Tires for the Budget-Minded

TURNPIKE STANDARD TWIN-PLY NYLON	
BLACKWALL SIZE	EACH after discount for cash
600/13	13.28
650/13	14.49
775/14 (750/14)	15.91
825/14 (800/14)	17.05
560/15	14.15
775/15 (670/15)	16.10
825/15 (710/15)	17.05
600/16 Tube Type	15.10

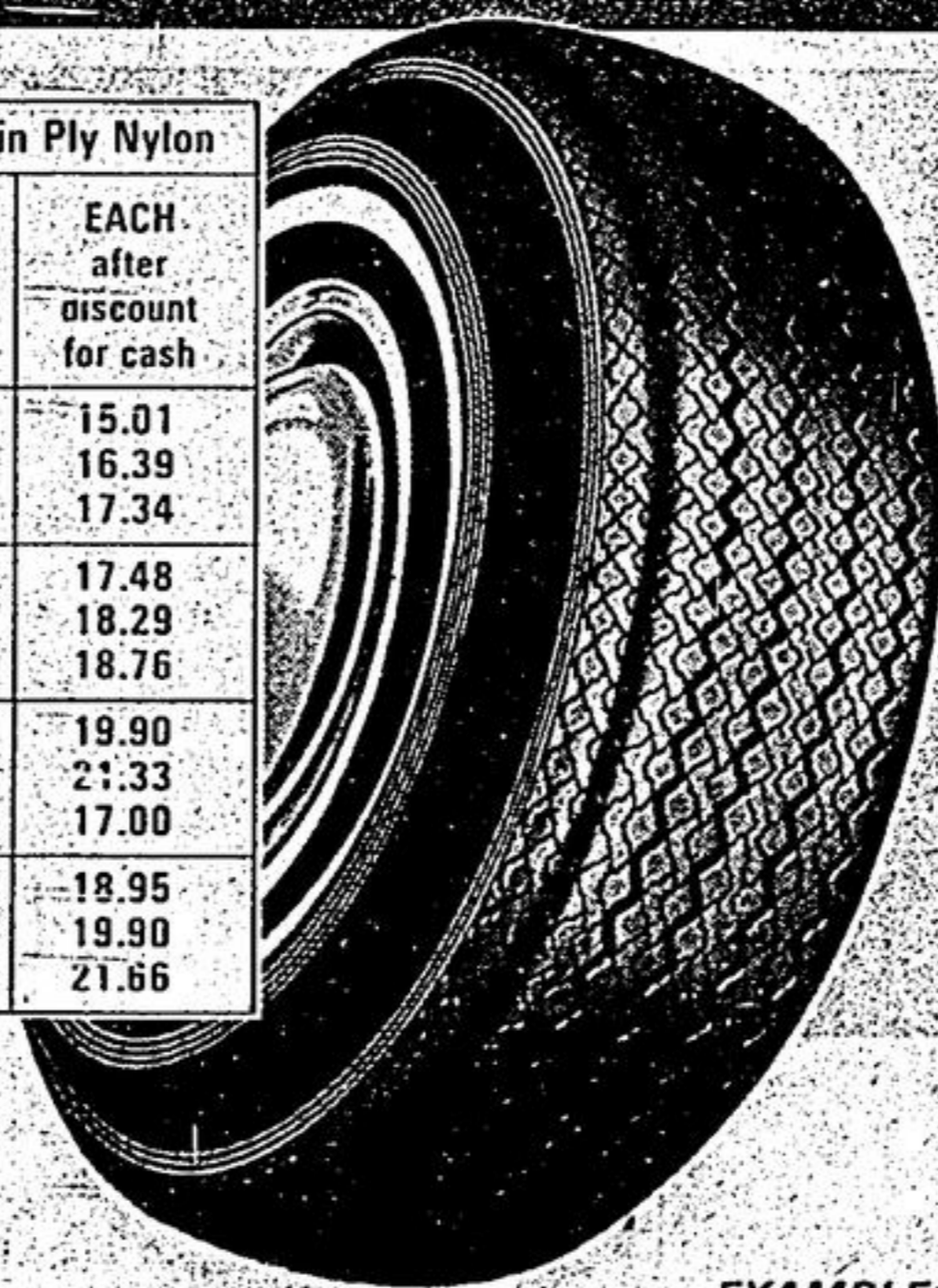


EXAMPLE:
775/14 (750/14)
BLACKWALL

Standard 15.91
TWIN-PLY NYLON

Similar construction to new-car tires of the early '60's, but instead of rayon as used then, now made with stronger-than-ever twin-ply Du Pont 66 Nylon. Turnpike standard meets or exceeds all government safety standards. Sold without insurance, you save the cost. (Insurance available at \$1.00 extra a tire)

THE WHIPPET Twin Ply Nylon	
BLACKWALL SIZE	EACH after discount for cash
600/13	15.01
B78/13 (650/13)	16.39
C78/13 (700/13)	17.34
C78/14 (695/14)	17.48
E78/14 (735/14)	18.29
F78/14 (775/14)	18.76
G78/14 (825/14)	19.90
H78/14 (855/14)	21.33
560/15	17.00
F78/15 (775/15)	18.95
G78/15 (825/15)	19.90
H78/15 (855/15)	21.66



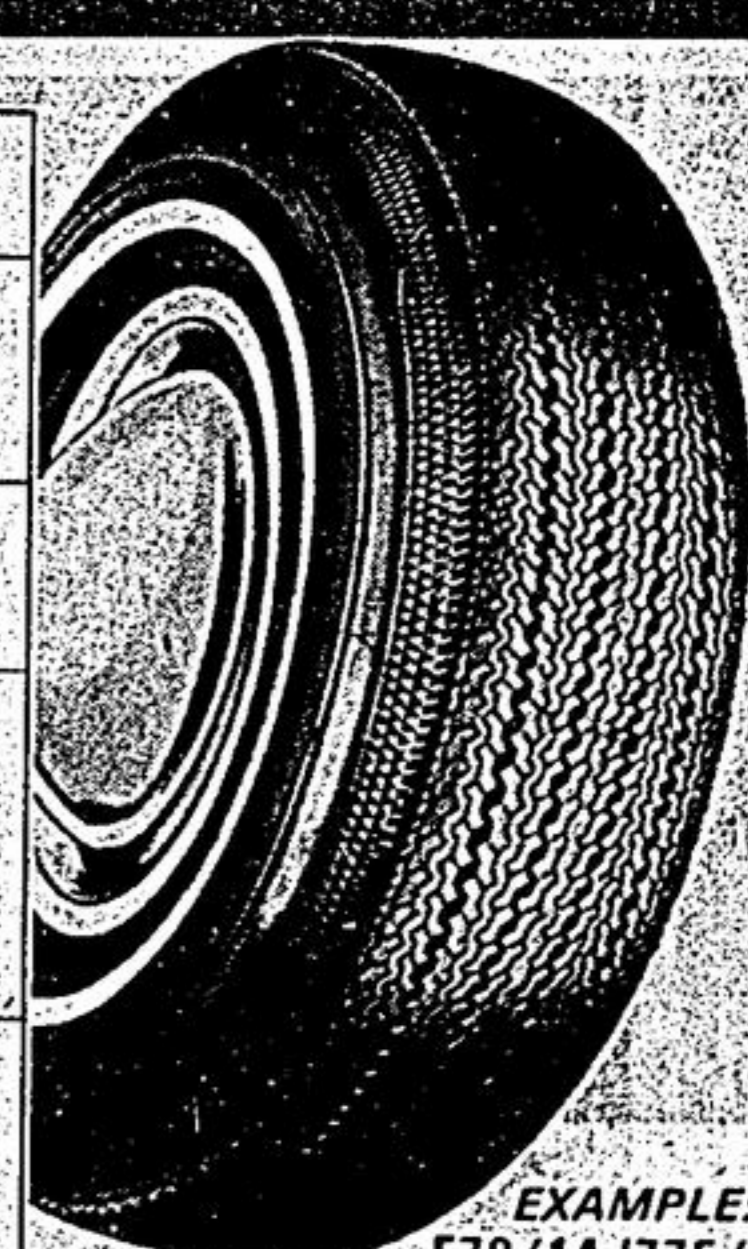
EXAMPLE:
F78/14(775/14)
BLACKWALL

Whippet II 18.76
TWIN-PLY NYLON

Shaped like a Radial, the Whippet is a popular tire for high-speed highways. Made with twin-ply Du Pont 66 Nylon body-cord, 50% stronger than that used in regular 4-ply tires, for a cooler-running high-speed tire. Its tread-pattern is formed of many separate elements for faster starts and safer stops.

5-Year Road-Hazard Insured!

THE CONTENDER 4-PLY POLYESTER	
BLACKWALL SIZE	EACH after discount for cash
Whitewall \$1.43 more.	
600/13	15.96
650/13	17.34
700/13	18.29
645/14	17.95
695/14	18.43
E78/14 (735/14)	19.24
F78/14 (775/14)	20.19
G78/14 (825/14)	21.33
H78/14 (855/14)	22.75
600/15	17.95
F78/15 (775/15)	20.38
G78/15 (825/15)	21.33
H78/15 (855/15)	23.08



EXAMPLE:
F78/14 (775/14)
BLACKWALL

Contender 20.19
4-PLY POLYESTER

Like tires on '65 to '69 new cars, except our Contender is 4-ply instead of 2-ply Polyester. This is the tirecord noted for smooth vibration-free 'no-thump' starts. Has the kind of stability that provides less tread-squirm and longer tread-life, at a moderate price.

5-Year Road-Hazard Insured

NO CHARGE FOR PASSENGER-TIRE INSTALLATION when you buy our Dill or Schrader Valve at our regular catalogue price of \$1.00. We must install our new tire and valve together. "A tire isn't new unless the valve is too!" Static-Balance, tire/wheel, \$1.00.

5% Discount for Cash (in lieu of Coupons) . . . Credit Terms available (but discount prices do not apply)