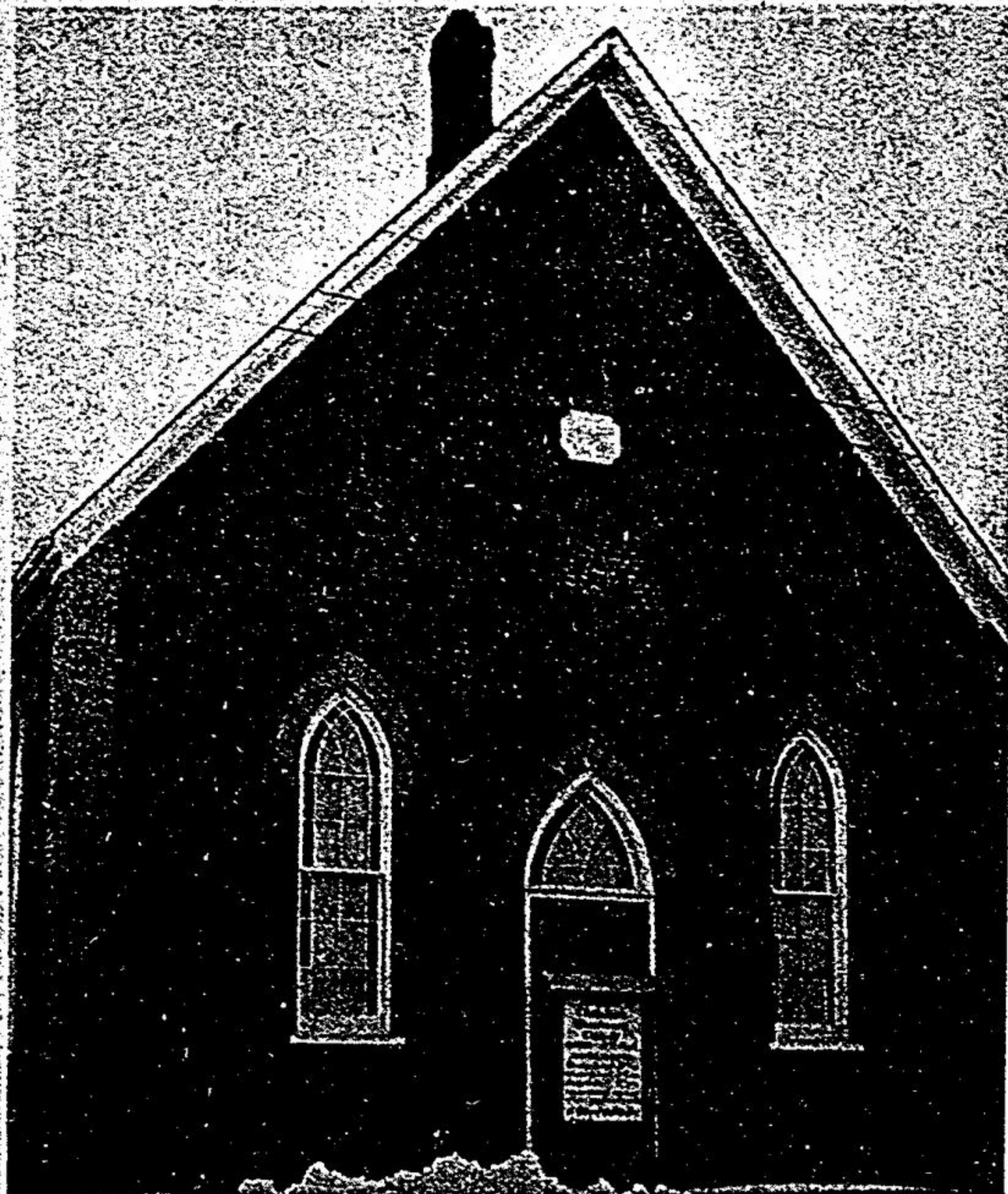
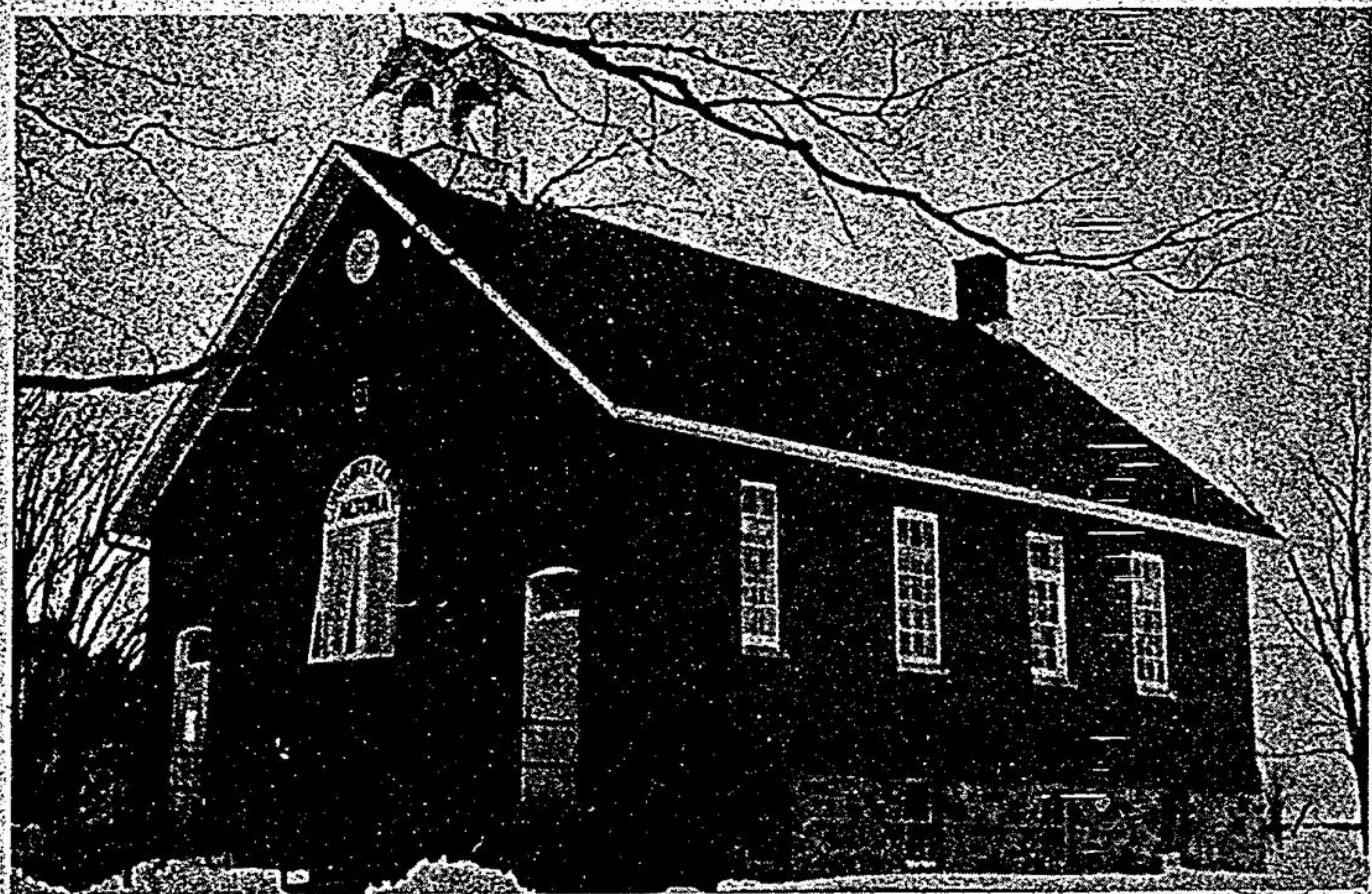




The Cider mill (above) and the old school (below) are two historic landmarks of Altona which will disappear when the Pickering airport is built. The school has been converted to be used as a community centre. The cider mill still operates. —Ted Wilcox.



Altona Missionary has a story to tell of meetings and services that span a century. It was built in 1875 and this year celebrates its centennial. The church is one of a number of historically significant buildings in Altona.

K.R. May

real estate limited - broker

104 main st. w. stouffville

CLAREMONT!

Delightful bungalow backing onto open fields, large bright rooms, stone fireplace & barbecue. Lot 134 x 136 with mature trees and dozens of ornamental shrubs. Double garage & paved drive, 9 percent mortgage, \$55,000.00. Call: Grant Morgan

STOUFFVILLE—CENTRAL

4 bdrm. 2 storey, finished rec. room, family room, walk-out onto cedar deck. Close to schools, arena & shopping. Immaculate. Call: Ken May

BRECHIN!

100 acre farm (1980 x 2220) very productive land, excellent water supply, well fenced, barn 32 x 55, 7 room 2 storey home surrounded by mature trees. \$20,000.00 down. Call: Grant Morgan

CLAREMONT AREA

Horse farm, 12 acres, 970 ft. hwy. frontage, barn 60 x 100, drive shed, double garage. Alum. clad 3 bdrm. home. Asking \$89,500.00 Call: Bill Tran

**UXBRIDGE SOUTH
PINEGROVE**

Secluded 73 acre estate, modernized 3 bdrm. home with family room & fireplace, 3 car garage & fenced paddock. Slightly rolling with trees and pond. Asking \$169,000.00 Call: Ken May

LAKE SIMCOE!

HOME FOR ALL SEASONS

MAPLE BEACH, a place you would be proud to show your friends. Why? Imagine 2 acres studded with towering maples, an ever-flowing creek, 150 ft. water frontage, a delightful 2 storey home, 50 ft. dock, plus much more. A truly remarkable property for only \$80,000.00. Call: Grant Morgan

STOUFFVILLE NORTH

"OPEN STORAGE & WRECKING"

12 1/2 acres partially wooded, comfortable 3 bdrm. brick bungalow, body shop, machine shop, 2 car garage. Garage license A & C included. Asking \$149,000.00 Call: Ken May

STOUFFVILLE

Comfortable 3 bdrm. brick bungalow, full high & dry basement. Corner lot 135 x 100. Insulated double garage. Asking \$64,500.00 Call: Grant Morgan

BUILDING LOTS!

CLAREMONT: 10 acres, 643 x 672, high scenic, 2 miles to go train, 1/2 mile to school, pond site, bldg. permit. Asking \$52,900.00

UXBRIDGE: 10 acres, 335 x 1336, high, well drained, 4 miles to Uxbridge, all permits available. Asking \$48,000.00

BEAVERTON: 1 1/4 acres on town sewers & water, possible severance for 2 more lots. Only \$16,500.00

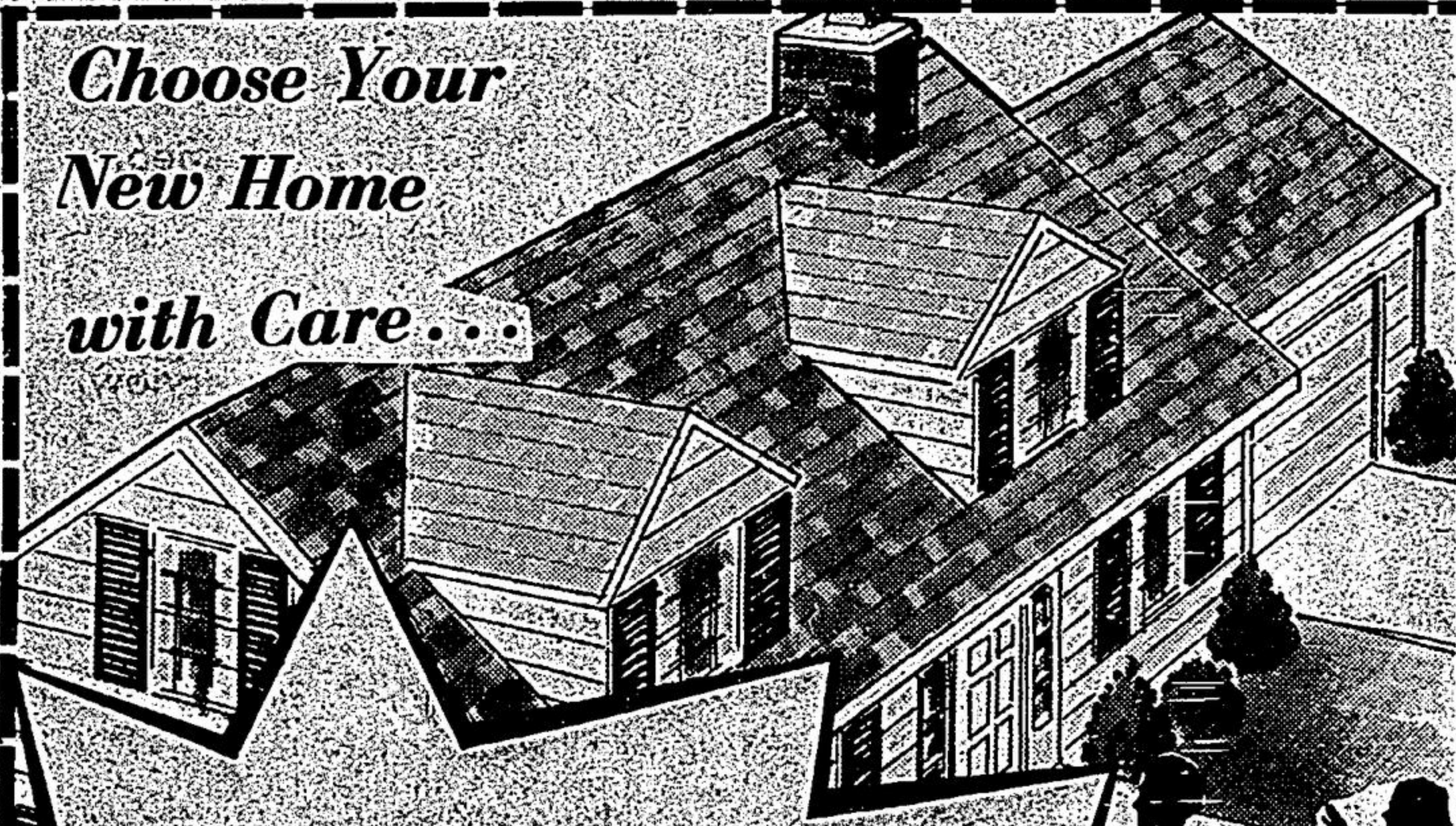
UDORA: Two 10 acres lots 377 x 1161, frontage on paved road. Bldg. permits available. Asking \$29,500.00 each

BROWNHILL: 6 acres, only \$13,500.00

UXBRIDGE: 40 acres, 1800 x 935, 36 acres of 40' pine trees, 50 mile view, perfect for large estate. Asking \$79,000.00 Call: Grant Morgan

640-2223 "FOR LANDSAKES GIVE US A CALL" 294-0601

Choose Your
New Home
with Care...



Choose Your Financing
with Equal Care...

Family on the grow? Time to own
your own home? Need a mortgage?
We can help —



The Stouffville District
CREDIT UNION Ltd.

96 Main West — STOUFFVILLE — 640-2811