

Buy carpets wisely; clean with care

Be it ever so humble, there's no place like a newly carpeted, painted, wallpapered, re-decorated, remodeled home.

If recent figures are any indication, American homemakers have gone

on a home improvement spree. Forty-two per cent — or 24 million — of the nation's 57 million households were redecorated or remodeled during the past 12 months, according to a Leisure Time

Research survey conducted for a major furnishings manufacturer.

Among the various home decorating products, carpeting was purchased by 7.7 million households during the past 12 months, second only to interior paint in popularity.

Since carpeting, wall-to-wall or an area rug, is a major investment that often becomes the basis for other home decorating activities, it's a good idea to know what to look for and how to care for it, says experts from the Eureka Home Care Institute.

Here's a brief run-down of the five major

carpet fibers and their properties:

Wool: The "champion of carpeting," is long-wearing, easy to clean, resists soil well, but is very expensive.

Nylon: Its extra strength and good wearing quality make it excellent for high traffic areas. Resilience (how well it springs back after crushing) is medium to excellent, depending upon construction. Nylon soils readily but is easy to clean.

Acrylic: Slightly more durable than wool, but not as durable as nylon, it is highly resilient and easy to clean. Acrylic resists wear and soiling well.

Polyester: Often found in shag carpets, polyester is strong, durable, easy to clean, dyes well and resists wear, dirt and stains well.

Polypropylene: Its extra strength and ability to withstand harsh treatment make it ideal for indoor-outdoor carpeting. It resists stains and soiling well.

Include proper padding with your purchase. It insures the life of your carpets, absorbs wear from traffic, supports backing and helps retain pile texture.

Steer clear of promotions that lure you into stores with unrealistically low carpet

prices, often based on square feet rather than square yards — the way carpeting is generally priced. The "bargain" carpet is seldom first quality. Buy from a reputable local dealer.

Proper care of your new carpeting will keep it looking new long after its purchase, say Eureka experts. Here are some handy tips:

- Be sure your cleaning equipment matches your needs. If your home is heavily carpeted, has shag carpets or many different carpet textures, use an upright or Power Team vacuum cleaner. They have carpet-height adjustments to clean everything from low naps

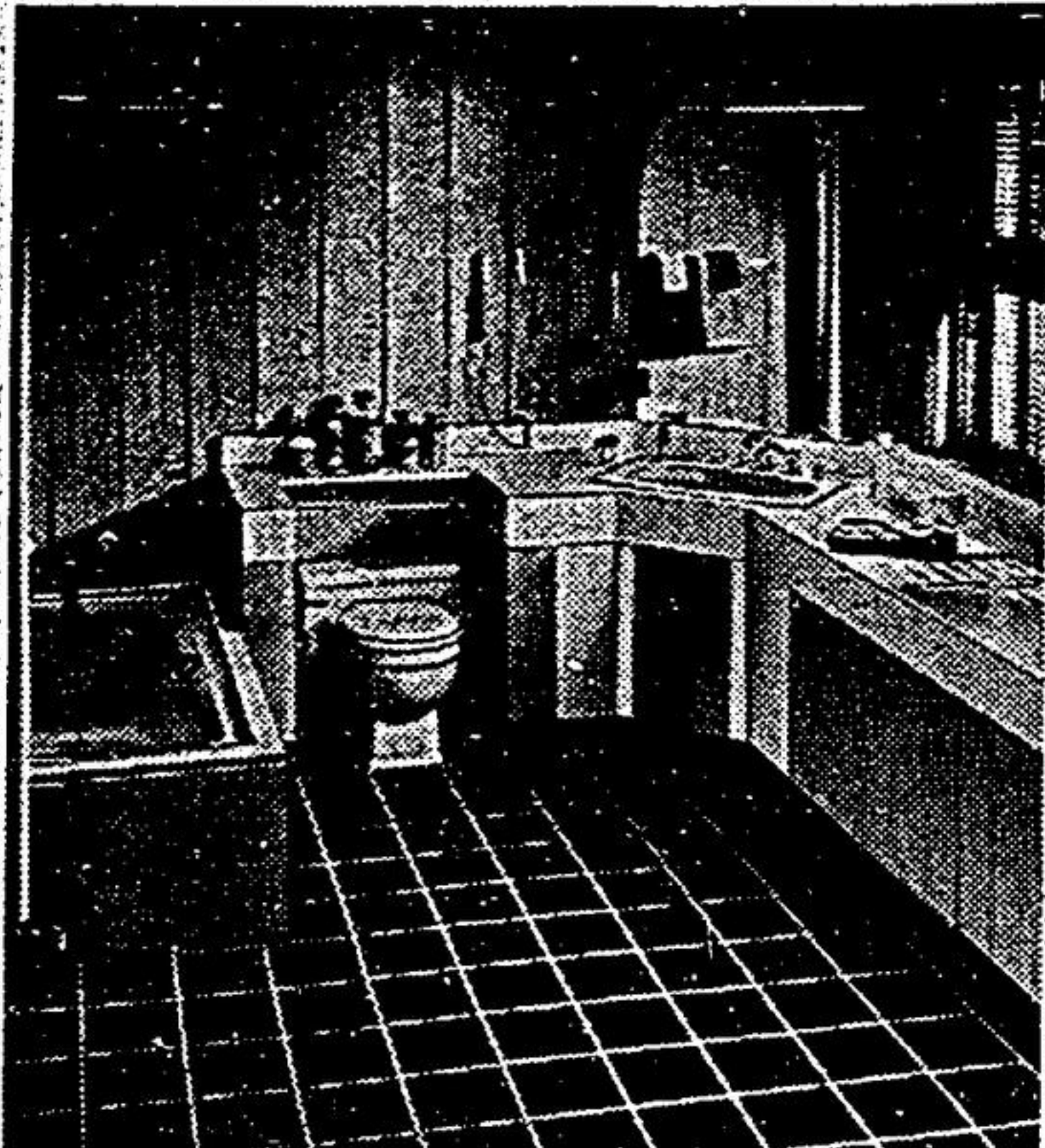
to thick shags; also Edge Kleener, a device for tackling hard-to-reach areas between wall-to-wall carpet edges and baseboards.

- Vacuum thoroughly once or twice a week; supplement with daily touchups, especially for plushes and shags, which tend to mat.

- To prevent fading, protect carpets from direct sunlight with blinds or shades.

- Turn area rugs periodically so they'll wear and soil evenly.

- Remove stains immediately; keep a carpet swatch to test for stain removal.



BATHROOM REBORN. A home of the 1870's — bathroom for the 1970's. Remodeling an out-of-date bathroom provided maximum counter space and storage areas in a minimum of space. Only the toilet was relocated, saving on remodeling costs.

Make that room nice

If your bathroom is typical of 75 percent of those around today, it's small, dull and in need of remodeling.

But when you look in home improvement magazines, all you see are large, luxurious bathrooms, bigger than the living rooms in most homes.

Where do you get ideas for remodeling that small bathroom?

Make use of the design concepts in those showcase bathrooms, says Kohler Co., a leading manufacturer of plumbing products. Select the ideas, color schemes and products you like and incorporate them into your plan.

There are seven basic elements that go into a practical, functional and beautiful bathroom, no matter what size it is.

The first is a good plan. Getting the most bathroom for your money is simply a matter of making the best use of available space.

Begin with questions only you can answer: Who will use the room — the entire family, adults only, children only, guests?

How many persons must it serve at peak periods, such as getting the family off to work or school?

What extras should the room provide — whirlpool bath, hair washing center, off-the-wall hand-held shower, compartmented toilet and bidet, bathtub with built-in safety features?

Once you've determined whom and how the new room will serve, it's important to know what's

available in plumbing products and accessories. That's step two.

Toilets are available with a variety of features. Some will not overflow. Some are wall hung for off-the-floor convenience.

Some are less than 19 inches high; counter tops can extend over the back of the toilet for additional storage space.

And some, like Kohler's Minqua, use 30 percent less water than conventional toilets. Ideal for cottages, farms and other homes dependent on wells and septic tank systems, as well as for use in areas of expensive water and sewerage rates.

Bathubs for the smaller bathroom range from extra long, like Kohler's 6-foot Caribbean for stretch-out comfort, to extra deep, like the Steeping Bath 20 inches deep for soaking comfort, but only 5 feet long to fit the tub recesses found in conventional bathrooms.

Kohler bathtubs in enameled cast iron have the textured Safeguard bottom that helps keep wet feet from slipping. Some tubs are also available with safety grip handles.

Lavatories today do more than just hold water. They're shampoo-grooming centers with plenty of room and convenience features like swing-away spout, soap-lotion dispenser. And they're self-rimming for neater, quicker installations.

A FIRST!



UNDERWOOD BROADLOOM PRESENTS

GRASS

(artificial broadloom turf)

From **\$6.49** sq. yd.

We proudly present artificial turf broadloom that comes not only in the traditional green, but in colors including candy stripe if you desire.

This is truly a year-round carpeting that can be used for your patio, cottage porch, stairs, lawn or boat.

It is 100% polypropylene carpeting that is long-wearing, non-allergenic, resistant to fire, insects and mildew.

Just put it down yourself—no installation required.

THE ONLY THING WE CAN'T SUPPLY ARE THE DANDELIONS.

MARKHAM

7th Concession Line
100 yds. north of Hwy 7

294-4440

NEWMARKET

Main St. — Just south
Davis Drive

898-1800

BARRIE

The Baymark Plaza
Just north of Bad Boy
Across from Georgina mall

728-0899

HOURS: 9 to 6 Mon., Tues. & Sat. 9 to 9 Wed., Thurs. & Fri. Evenings