

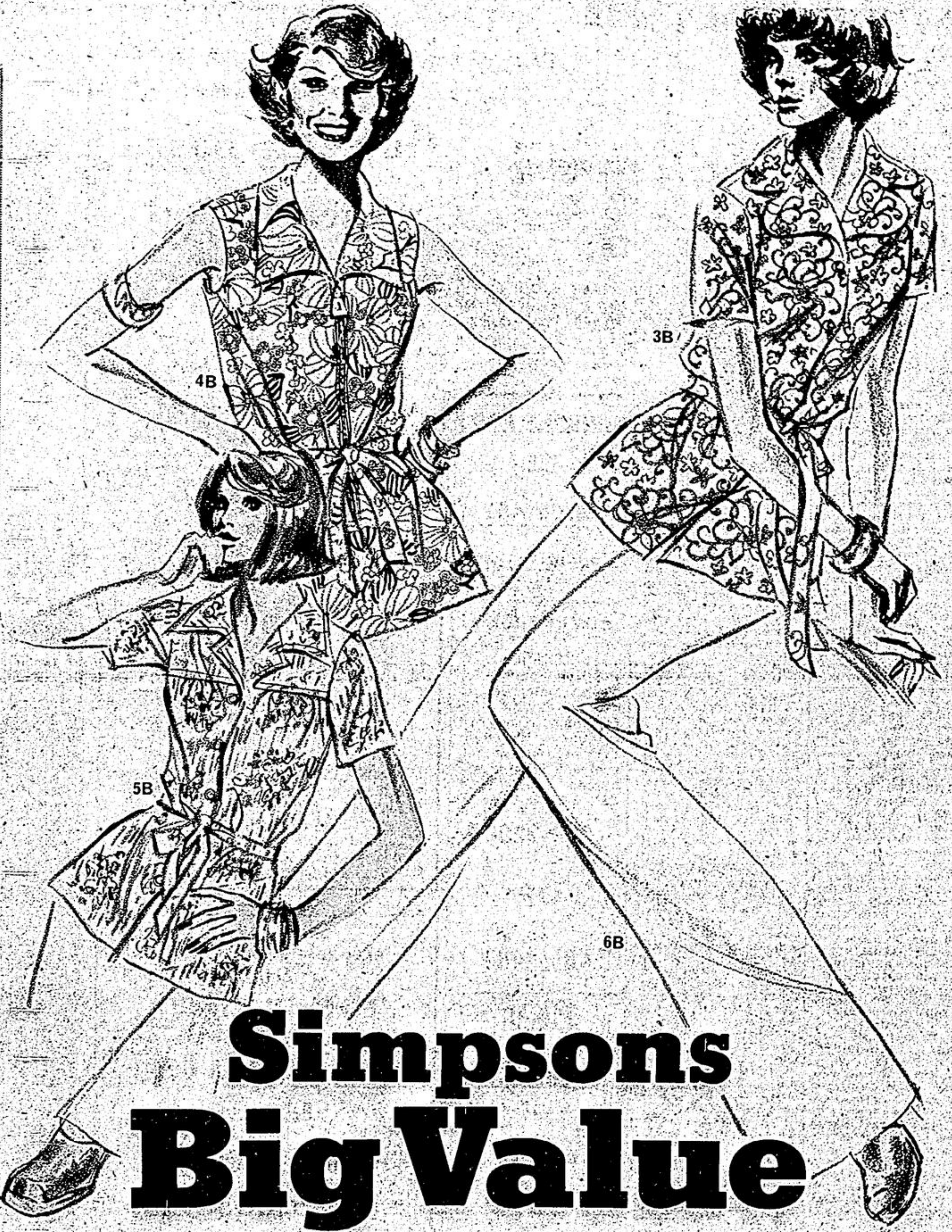
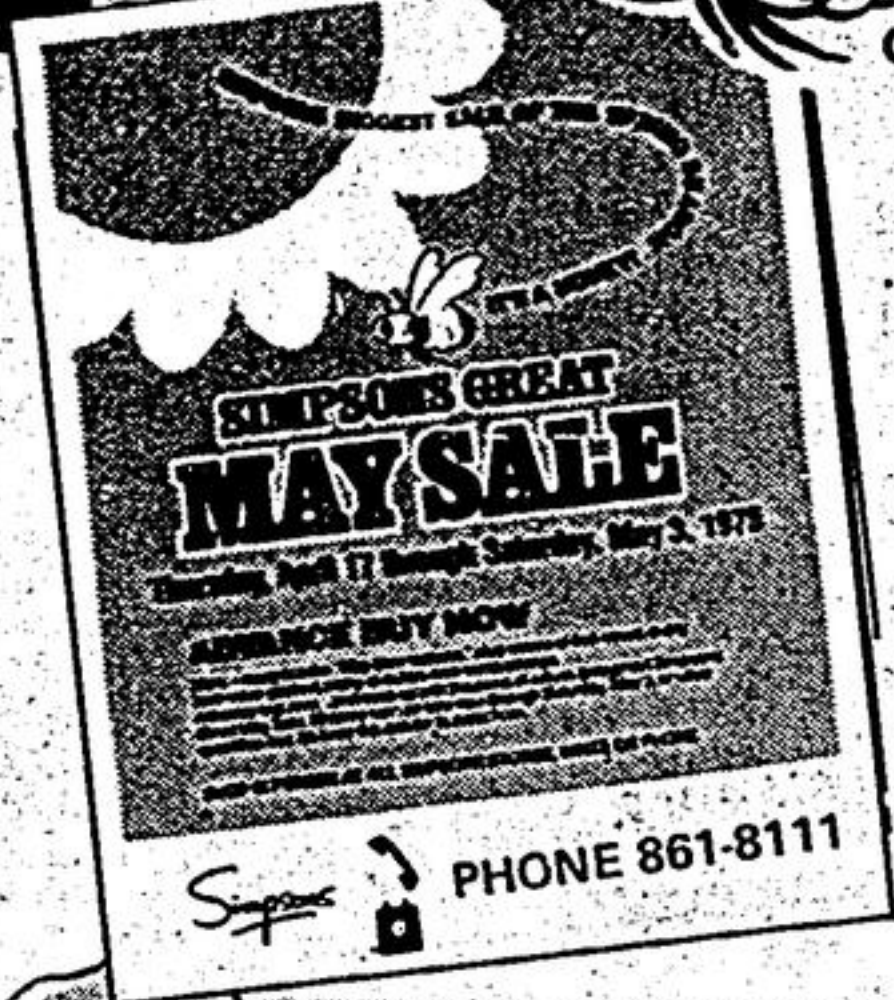
**Simpsons**



# SIMPSONS GREAT MAY SALE

## starts Today Thursday April 17

Keep your copy of Simpsons 56-page May Sale Section -- shop with it all through the Sale. If you missed yours, ask for one at Simpsons-Hillcrest Mall. And watch today for the special Opening-Day (Thursday) section.



## Simpsons Big Value

**special! coat buys for rain, shine, anytime!**

**27<sup>99</sup>**

May Sale each  
These 2 all-weather coats were made to Simpsons specifications by one of Canada's top manufacturers. They have much of the detail of more expensive lines, at a budget price. They're in a shower resistant blend of 65% cotton/35% nylon with an acetate lining. Sizes 10-20.

1B. Double breasted all-weather coat with notched lapels, pockets and back belt. Colors: navy, pearl. Also sea foam (pale green) for those who shop in person.

2B. Single breasted all-weather coat with round collar, large patch pockets, stitching detail, belt. Colors: navy, pebble (rich beige). Also in pearl and blue bell for those who shop in person.

PLEASE STATE SECOND COLOR CHOICE  
PHONE ORDERS FILLED - 861-8111  
Or write, Simpsons Hillcrest Mall in Richmond Hill, ST7614

**Spring checks keep the budget balanced**

**13<sup>99</sup>**

May Sale each  
This perky Spring dress is made for the fuller figure, with an easy-fit yoke top and waist-free line. It's styled with spread shirt collar, 3/4 button front, patch pockets and tie sash belt. Short sleeves have fashionable mock cuffs. The fabric is an easy care "n" comfy polyester. In blue, pink or aqua checks on white. Sizes: 12-20, 16 1/2 to 24 1/2.

PLEASE STATE SECOND COLOR CHOICE  
PHONE ORDERS FILLED - 861-8111  
Or Write, Simpsons Hillcrest Mall in Richmond Hill, ST7616

**light, cool toppings of easy-care polyester in delicious screen prints**

Simpsons had these toppings whipped up with your spring/summer wardrobe in mind. Perfect way to top off slacks, skirts and walking shorts. Canadian-made of 100% polyester screen print doubleknit, they're so easy-care, just machine wash and dry.

3B. Short sleeve, button-front top has a notched lapel and a soft tie belt. Floral scroll monotone print on white ground in navy, aqua or red. 12-20 or 38-44.  
4B. Sleeveless top with face-flattering wing collar, zip front and soft tie belt. Large floral print on white grounds. Predominating shades of peach, (pale orange), blue/green, or navy. 12-20 or 38-44.  
5B. Softly gathered, short sleeve top with softly gathered yoke front. Buttoned front. Tie belt. Print of diagonal lines and small groupings of flowers on white grounds. Predominating shades of blue or pink. 10-20.

**dyed-to-compliment, polyester pants**

6B. Pull-on pants of 100% polyester in a lacoste type stitch. Elasticised waistband and a 31" inseam. Colors dyed to compliment the 3 tops. Navy, white, blue or peach (pale orange). 10-20 or 38-44. Please state 2nd color choice.

PHONE ORDERS FILLED - 861-8111  
Simpsons Hillcrest Mall in Richmond Hill, Mall Level, ST7617

**10<sup>99</sup>**

Big Value each  
**6<sup>99</sup>**

Simpsons Hillcrest Mall in Richmond Hill, Yonge St. at Carrville Rd., open 9:30 a.m. to 9:30 p.m. Mon. to Fri. (Sat. to 6 p.m.)