

Make that room a nice place to visit

If your bathroom is typical of 75 percent of those around today, it's small, dull and in need of remodeling.

But when you look in home improvement magazines, all you see are large, luxurious bathrooms, bigger than the living rooms in most homes.

Where do you get ideas for remodeling that small bathroom?

Make use of the design concepts in those showcase bathrooms, says Kohler Co., a leading manufacturer of plumbing products. Select the ideas, color schemes and products you like and incorporate them into your plan.

There are seven basic elements that go into a practical, functional and beautiful bathroom; no matter what size it is.

The first is a good plan. Getting the most bathroom for your money is simply a matter of making the best use of available space.

Begin with questions only you can answer. Who will use the room — the entire family, adults only, children only, guests?

How many persons must it serve at peak periods such as getting the family off to work or school?

What extras should the room provide — whirlpool bath, hair washing center, off-the-wall hand held shower, compartmented toilet

and bidet, bathtub with built-in safety features?

Once you've determined whom and how the new room will serve, it's important to know what's available in plumbing products and accessories. That's step two.

Toilets are available with a variety of features. Some will not overflow. Some are wall hung for off-the-floor convenience.

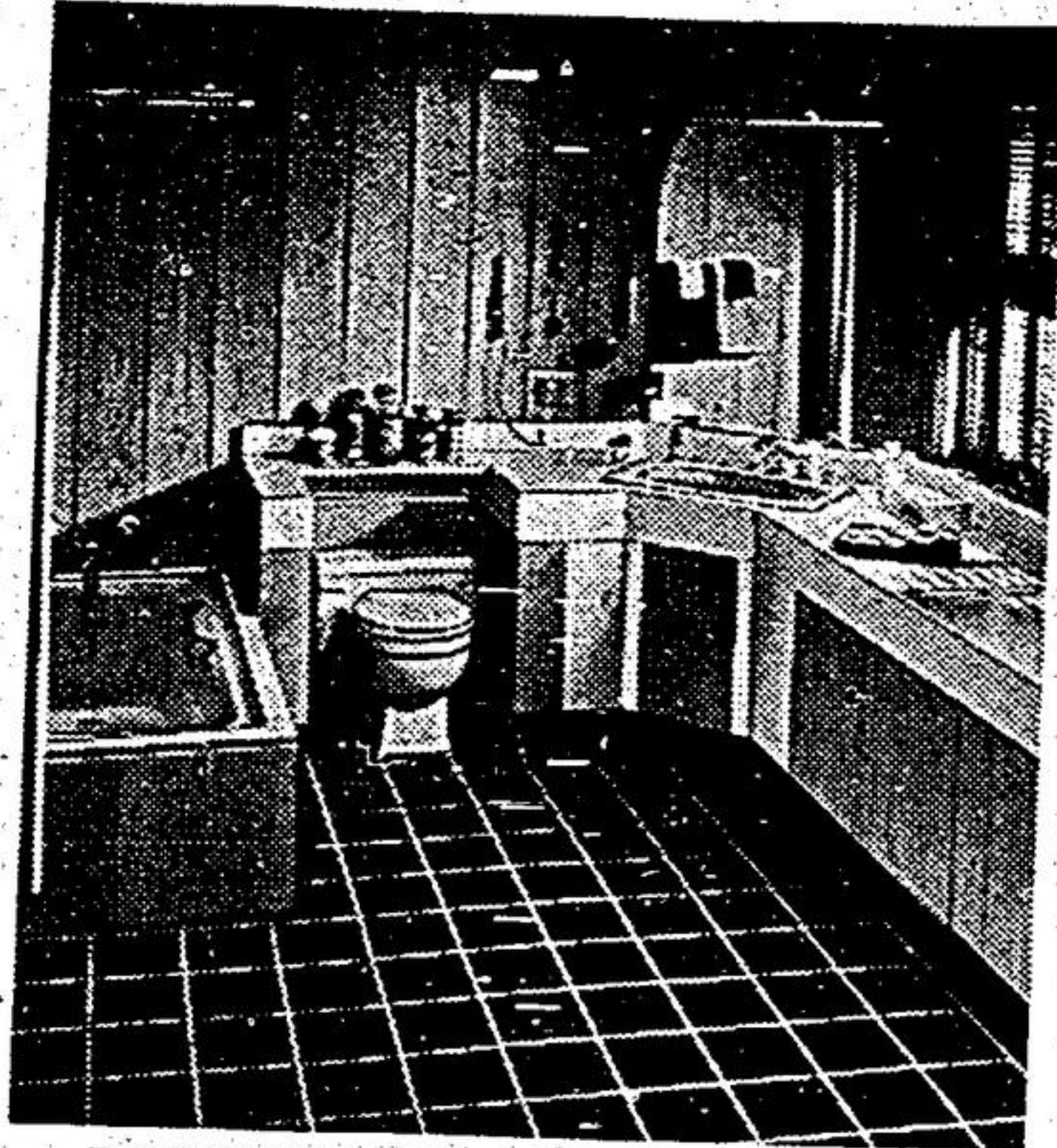
Some are less than 19 inches high; counter tops can extend over the back of the toilet for additional storage space.

And some, like Kohler's Minaqua, use 30 percent less water than conventional toilets. Ideal for cottages, farms and other homes dependent on wells and septic tank systems, as well as for use in areas of expensive water and sewerage rates.

Bathtubs for the smaller bathroom range from extra long, like Kohler's 6-foot Caribbean for stretch-out comfort, to extra deep, like the Steeping Bath 20 inches deep for soaking comfort, but only 5 feet long to fit the tub recesses found in conventional bathrooms.

Kohler bathtubs in enameled cast iron have the textured Safeguard bottom that helps keep wet feet from slipping. Some tubs are also available with safety grip handles.

Lavatories today do more than just hold water. They're shampoo-



BATHROOM REBORN. A home of the 1870's — bathroom for the 1970's. Remodeling an out-of-date bathroom provided maximum counter space and storage areas in a minimum of space. Only the toilet was relocated, saving on remodeling costs. Work center of room is Lady Vanity shampoo-grooming centre lavatory, from Kohler, with shampoo spray arm, swing-away spout, White Fair handles. Toilet is Kohler's Pompton; low silhouette provides additional counter space. Guardian bathtub has safety grip handles, Safe-guard slip resistant bottom. Throughout the room, colors work together for the cool, seashore look — fixtures in Cerulean Blue, faucet handles in White, rough-sawn southern pine, slate quarry tile floor, and antique

grooming centers with plenty of room and convenience features like swing-away spout, soap-lotion dispenser. And they're self-rimming for

neater, quicker installations.

Color coordination is the third basic element. And it's even more im-

portant for the smaller bathroom.

Plumbing products are available in such attractive colors they almost beg to be the starting point of your color scheme.

Choose from bold accents like Tiger Lily, Blueberry, Antique Red or Sunflower. Use bright colors like Pink Champagne, New Orleans Blue, Fresh Green or Harvest Gold. Mix or match. Open up a small room with light, bright colors.

Easy maintenance, the fourth basic element, is as important in the bathroom as it is in any other room.

Begin with quality fixtures, those with finishes of glass-hard vitreous china or durable enameled cast iron. Complement them with quality single control or twin handle fittings, faucets with chrome or gold electroplate finishes and handles without dirt-catching corners.

Consider vinyl wall coverings for both decorative effect and easy maintenance. Use non-abrasive cleaners to keep the whole room clean and bright.

The fifth element is adequate ventilation. It's an item easily overlooked in bathroom remodeling.

Depending on the extent of renovation, ventilation can be added under the floor — or through the wall or ceiling.

Ample cabinet space and adequate lighting are the final elements in proper bathroom planning. Counter top lavatories and low silhouette toilets help gain storage space.

A multitude of cabinet styles and colors are available to complement your decor.

As for lighting, put it where you need it most — make-up lights around the mirror, decorative lighting under wall-hung cabinets or in the ceiling.

For more great bathroom ideas, send 25 cents with your name, address and ZIP code to: Great Bathroom Ideas, Kohler Co., Kohler, Wis. 53044.

Remedy growing pains by enclosing the porch.

You may have the basic structure for that extra room you need without even realizing it. If you own an older home that has a porch, enclosing it could give you year-round, extra living space.

Some basic essentials such as a roof, floor, supports and one wall already exist. A porch enclosure, therefore, should be a more economical home improvement than an add-a-room project in terms of material, time and labor.

All-year porch

To make a porch enclosure liveable year-round, insulation will have to be added to the floor, walls and ceiling, a method devised to heat the room — such as baseboard heating — and windows installed.

Ample use of windows can retain the advantageous qualities of broad views, fresh air

and sunshine that a porch offers.

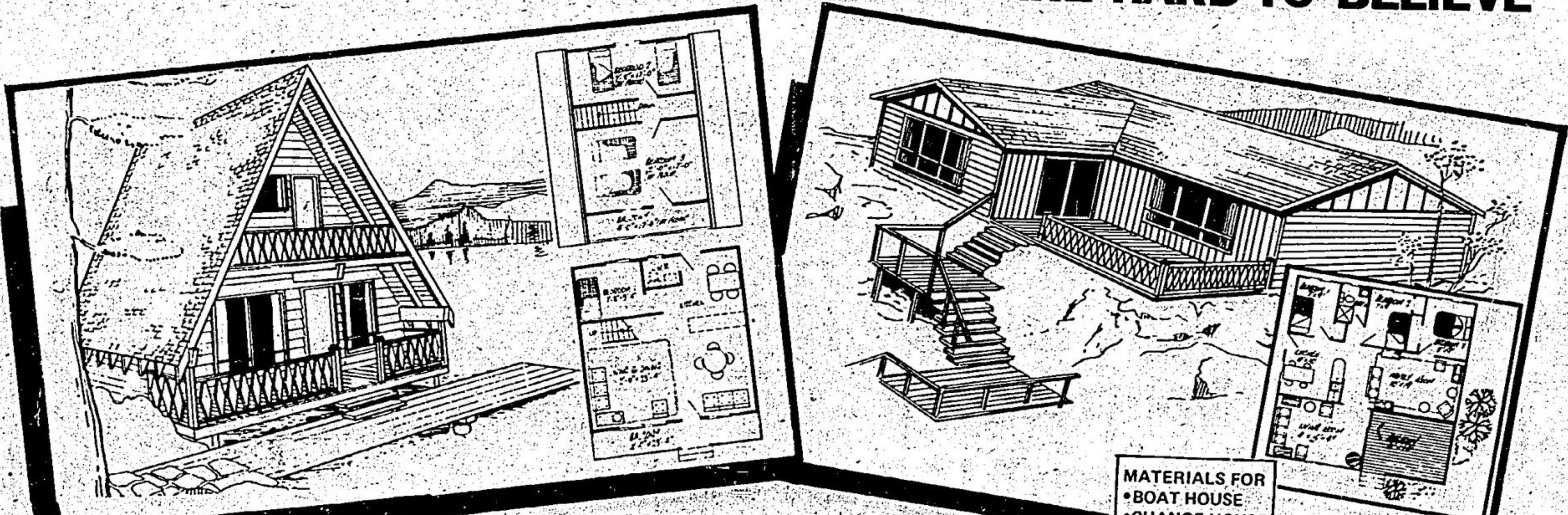
These benefits are best achieved by installing good ventilating windows such as wood casements or slider units. Both styles in ponderosa pine with insulating glass — two panes of glass with an insulating air space between — can be purchased in a variety of sizes at local home centers or building supply dealers.

Other benefits Wood windows have additional benefits. The insulating glass in combination with factory-applied weatherstripping and the natural insulation provided by the wood sash and frame guard against excessive heat loss and assure snug closure. Windows of ponderosa pine with insulating glass also put an end to the spring and fall job of taking down and putting up storm sash.

AT RATCLIFF LUMBER LIMITED

ORDER YOUR COTTAGE NOW FOR EARLY SPRING CONSTRUCTION

WE BUILD 'EM FOR YOU AT PRICES THAT ARE HARD TO BELIEVE



TWO OR OUR POPULAR STYLES
FREE ESTIMATES OF YOUR OWN PLAN

RATCLIFF LUMBER, LIMITED

Head Office: UNIONVILLE

HWY. 7 & KENNEDY RD. CALL - 297-1661

Branch Yards: Gormley

Don Mills & Gormley Sideroad Call 888-1991

MATERIALS FOR
• BOAT HOUSE
• CHANGE HOUSE
• DECKING
• DOCK
LUMBER

MATERIALS FOR
• INTERIORS
• INSULATION
• FIRE PLACES
• FLOOR & CEILING TILE
• PANELLING

WE DELIVER
150 MILES
FROM
TORONTO

RATCLIFF LUMBER LTD.

4340 — No. 7 Highway
Unionville, Ont.
L3R 1L9

• Send for free Literature & Prices

• For added ideas mail for FREE catalogue of cottage plans, prices, and information.

Name

Address

Phone