

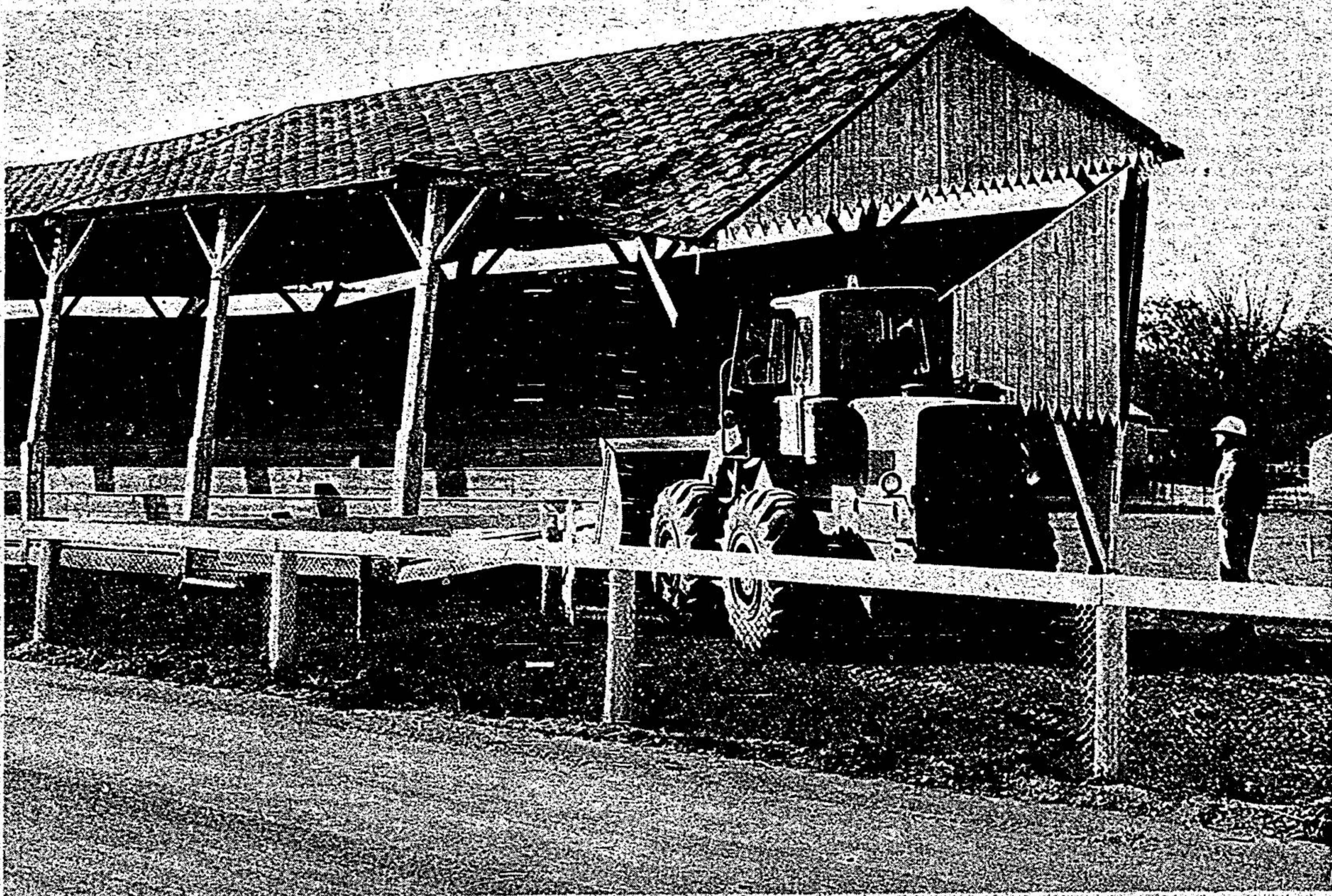
The old grandstand no longer exists

Back in 1887 the Markham Economist commented on the fact that the fair had grown to such proportions that the facilities were inadequate. "The grounds should be enlarged," one editorialist wrote, "more stalls should be built and a grandstand erected..."

In 1886 a grandstand was built on the fairgrounds by John Jerman Sr., an old village blacksmith. He built and paid for it himself and kept possession of it for many years, collecting whatever proceeds came in for the use of them. That year the grandstand was used for a baby show as well as a promenade concert by the Grenadier Band.

In 1914 the Markham Fair Society bought the grandstand from Mr. Jerman for \$300. At that time there was a quarter mile racetrack in front of the stands but an oval, half-mile track was laid out in 1888.

In 1955 the grandstand was given a new roof and a new coat of paint but not even that could prolong the life of this Markham Fair tradition for long. Sometime in the early '60's, no one is quiet sure when, the grandstand was condemned and moved later to be torn down.



The original grandstand at Markham Fair was built in 1886 by John Jerman Sr., a village blacksmith. It was later purchased by the Fair

Board for \$300. After many years of use, the structure was condemned and torn down as shown in the photo above.

Parade plans finalized

Parade Marshall Hugo Gosetto is quiet excited over this year's Markham Fair Parade. It's the first year he has had this chairmanship and has accepted his responsibilities with such vigor and enthusiasm that he laughingly admits, "I got into a little trouble at first because I started right in making plans on my own without first consulting the rest of my committee."

The parade, which will be led by Jill Barton mounted on an Arabian Horse and dressed in Arabian Costume. There will be many groups of horses in the procession as well as a mule team with wagon and representatives from the governor-General's Horse Guards dressed in Lancer uniforms.

Some of the music will be provided by the Toronto Gaidhlig (pronounced Gaelic) Society Pipe Band, the Royal Canadian Signal Band the Seneca Princesses, the Brampton Clown Band, and the ever popular Claremont Citizens Band. The newly crowned Queen of the Fair with her Princesses in attendance will have their own special float, and marching children will be local Brownie and Girl Guide groups, representatives of the Lions Club, and last but by no means least of all, clowns galore, just to name a few.

"Because this is an agricultural fair" says Mr. Gosetto "we will have farm machinery in the parade as well as floats from local merchants and commercial establishments in the area. G.M. Smith is entering two floats and one is an antique of early vintage." He is very proud to have many antique cars not only in the parade, "but they will also be on display at the fair grounds afterwards" he tells you. Other relics of the past will include a

1920 vintage ambulance entered by Peter Sullivan, an antique bicycle driven by Barry Little and "the World's biggest" Rolls-Royce entered by the C.B.C." he adds enthusiastically.

At the conclusion of the parade, the bands will be playing at various locations throughout the fair grounds for the rest of the day and for the children's benefit, the Police Talking Cruiser will also be on display. These are just a few of the

highlights of the parade and to see them all, "you'll just have to come out and see the parade on Sunday afternoon" says Mr. Gosetto with a smile. The procession will start at approximately 12:30 p.m. on 16th Avenue immediately west of Highway No. 48 and will proceed along Main Street to the Fair grounds.

Fresh Spring Wallpaper

YOUR ONE-STOP CENTRE
FOR HOME-DECORATING

RAYMER

PAINT and WALLPAPER

ARTIST SUPPLIES

114 MAIN ST. MARKHAM

294-4733

PAINT

Fall Fashion Festival



A palette of rich colors
textures in depth. Fall's best
classics.



de Bourbon Fashions
MARKHAM SHOPPING PLAZA

Daily 9:30 to 6 p.m.
Thursday and Friday to 9 p.m.
Phone 294-2900