

Goodwood Fair draws hundreds

GOODWOOD Almost 300 people, hundreds of children, and an unknown number of pets turned out Saturday to make the Goodwood Fair the most successful ever.

The gate recorded 299 paid admissions. A popular feature was the Art Show, where a

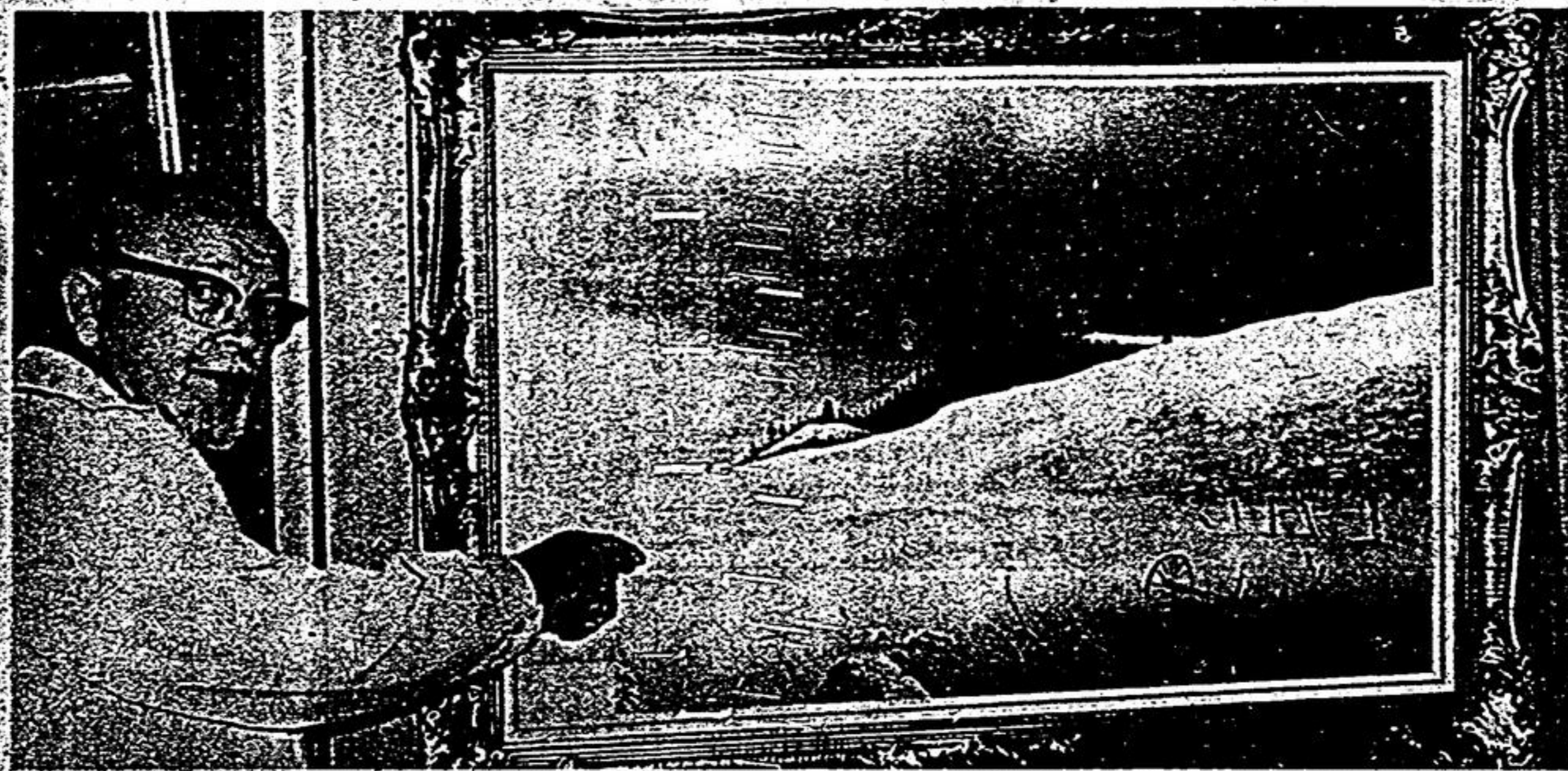
number of local artists displayed their work. Several paintings, and other works were sold during the Fair. Gordon Beverly, of Uxbridge, became the proud owner of a calf when he won the raffle. The younger participants were everywhere during the Fair, and the events designed for them were well-attended. A prize for the best bicycle went to Jeff Harper, of Goodwood, and Lisa Wilson won first prize for the best tricycle.

In the Pet Show, Dino Martino, of Claremont, took first place with his pet raccoon, while Bert and Jimmy Tyndall, of Goodwood, won second prize with their pantomime dogs.

Forty-three dogs were entered in eleven categories and winners were: smallest, Holly, owned by Sandra Mayr; saddest eyes, Amber, owned by Mike Jones; friendliest, Haggis, owned by George Heppburn; best tail-wagger, Puppy, owned by Paul Mimra; longest tail, Ursa, owned by Sherry Harris; best trick, Husso, owned by Ingrid Klein; largest, Shane, owned by Robert Wilkinson; novelty, Brandy, owned

by Debbie King; and best groomed, Susie, owned by Jeff Calas. Gary Wilson's dog, Susie, won two first prizes in the showmanship and most obedient classes.

All present enjoyed the event, and plans are already being formulated for next year's Goodwood Fair.



Last weekend's Goodwood Fair again this year featured an art show and sale featuring some highly professional local weekend artists. Uxbridge artist Ernie Powell points out some of the features of his painting, 'Century City (with apologies)'.

CALL ME



Bring you ideas on Money, Back to Life, Insurance, Sun Life's Security Fund, Endowment, protects your family until you are 65, then returns all premiums plus dividends.

HEINZ DAUES, C.I.U.
R.R. 3, Claremont
Telephone 640-1065

SUN LIFE OF CANADA

PORT PERRY SNOWMOBILE CLUB
3rd Annual
SNOW SHOW '75
PORT PERRY ARENA

September 27-28-29

Over 100 models of 1975 Snowmobile Clothing and Accessories on Display

Largest snowmobile show in this area. Fashion Shows Daily

Draw will be made for 1975 SNOWMOBILE during the show

- FRIDAY 5 p.m. - 10 p.m.
- SATURDAY 11 p.m. - 10 p.m.
- SUNDAY 12 noon - 6 p.m.

EVERYONE WELCOME
ADMISSION: \$1.00 Family \$5.00 each



Baby Laura Gaston, 13 months, is shown here moments before the announcement that she had won first prize in the 12 to 24-month-old category of the Beautiful Baby Contest at the Goodwood Fair. Offering a little encouragement and moral support in the background is proud mother Gail of R.R. 3, Stouffville.

Building boom slows

STOUFFVILLE around here is developing the building boom into a damp firecracker.

The Tranquility Shop presents AN ART SHOW in needlework

An exhibition of needlepoint and crewelwork

Markham Centennial Library
Saturday, September 28 9:30 to 5 p.m.

Like A Good Neighbour State Farm is there for all your insurance needs see

KEN SHEPHERD

794-1562
State Farm 27 Parkway Ave. Uxbridge, Ontario

We worry a lot ...about your safety

FARM SAFETY ASSOCIATION

HUTCHINSON FARM SUPPLY
640-2692
HWY. 48 - 3 MI. NORTH OF RINGWOOD

STEP RIGHT UP FOLKS ITS THE MARKHAM FAIR

NEXT WEEK
Thurs. Oct. 3rd - Fri. Oct. 4th - Sat. Oct. 5th - Sun. Oct. 6th

General Information

ADMISSION

Adults	\$1.50
Under 16, Thursday & Friday	.50
Under 16, Saturday & Sunday	.75
Children under 6 years	Free
Cars Parked on the Grounds	\$1.00
School buses	Free

HOOT BEEF DINNERS
Will be served in the Auditorium of the Arena
On Friday 11:30 a.m. until 2:00 p.m.
On Friday 4:30 p.m. until 7:30 p.m.
On Saturday 11:30 a.m. until 7:30 p.m.
On Sunday 4:30 p.m. until 6:00 p.m.

QUEEN OF THE FAIR
Finals and the crowning of Miss Markham Fair to take place on Friday evening.

BUILDINGS
Open at 9:00 a.m. every day and close at 10:00 p.m. except Sunday when they open at 1:00 p.m. and close at 6:00 p.m.

LOCAL ENTERTAINMENT
Local Entertainment Groups performing every day of the Fair, on the Grounds.

CONKLIN MIDWAY
Conklin Shows Ltd. will be operating Games and Rides until 10:30 p.m. each day of the Fair and on Sunday from 1:00 p.m. until 6:00 p.m.

So Be Fair Minded, Come To The Fair

Both Markham and Whitchurch, Stouffville have recently shown a drop in the value of building permits issued. Comparing August 1973 to August 1974, Markham saw permit values drop to less than one-quarter of an actual fall of over \$9 million.

Stouffville has experienced a change just as drastic. Last year, the August permits were worth \$1.2 million; this year the figure was \$320,000.

A comparison of the first eight months of last year and this confirms the trend, although the differences are not as great. Stouffville experienced a drop from \$4.3 million in 1973 to \$3.1 million in the January-August permit sales, a reduction of about 25 percent.

Markham, however, had a building-loss figure of closer to 50 percent, from \$6.7 million in 1973 to \$3.15 million this year.

Secretary of the Whitchurch-Stouffville Planning Board, Ken Aida, felt that the figures were not unusual.

"You get variations from one year to the next," he explained. "Last year we had a large development, and next year we may well have another. Over a period of years, I expect the figures would balance out."

Similar "low years" have occurred before, but their effect is usually not lasting, he added.

Try a new Yale truck today. Buy it tomorrow and save.

The Yale rental/purchase option plan is an economical way to evaluate your materials handling methods and our industrial trucks. No long term commitment. Just rent a Yale truck for a specified term. If you decide to buy or lease, we'll credit most of your payments against the purchase price. That's why we say try it and you'll buy it.

Call (416) 241-5221
Yale Industrial Trucks Toronto
2 Vaux Street, Rexdale, Ontario M9W 1L2

Yale Materials Handling

IT'S A GREAT SHOW...

NEIL PATRICK MOTORS
***** STOUFFVILLE *****

Great! Spectacular!

1975 AUTO SHOW

26th Sept. 27th 28th

FREE coffee and Donuts

Drop in and see our Display of New Models for 1975

Open Thurs. Fri. nights till 9 pm.

Neil Patrick Motors
Main St. Stouffville

640-3450

BUICKS
PONTIAC
LEMAN
SKYLARK
SKYHAWK
VENTURA
GMC TRUCKS
ASTRE