

Modular home beats high housing cost

Six-room bungalow priced at \$16,500

STOUFFVILLE — Housing prices are still soaring upward with no sign of leveling off in the near future, but Mr. and Mrs. Chris Boncheff of Stouffville - Gormley Sideroad, have found a way to beat them.

The Boncheffs, like many families who find it almost impossible to buy a new house, recently purchased a modular home for \$16,500 complete with kitchen and bathroom fixtures, broadloom in living-room and master bedroom, paneled walls throughout, electrical services and oil furnace.

Inside, the house looks like any conventional home with 1,600 sq. ft. of living space. The kitchen and bathroom are as large or larger than customary dwellings. Mr. Boncheff excavated the site to make allowances for a full basement.

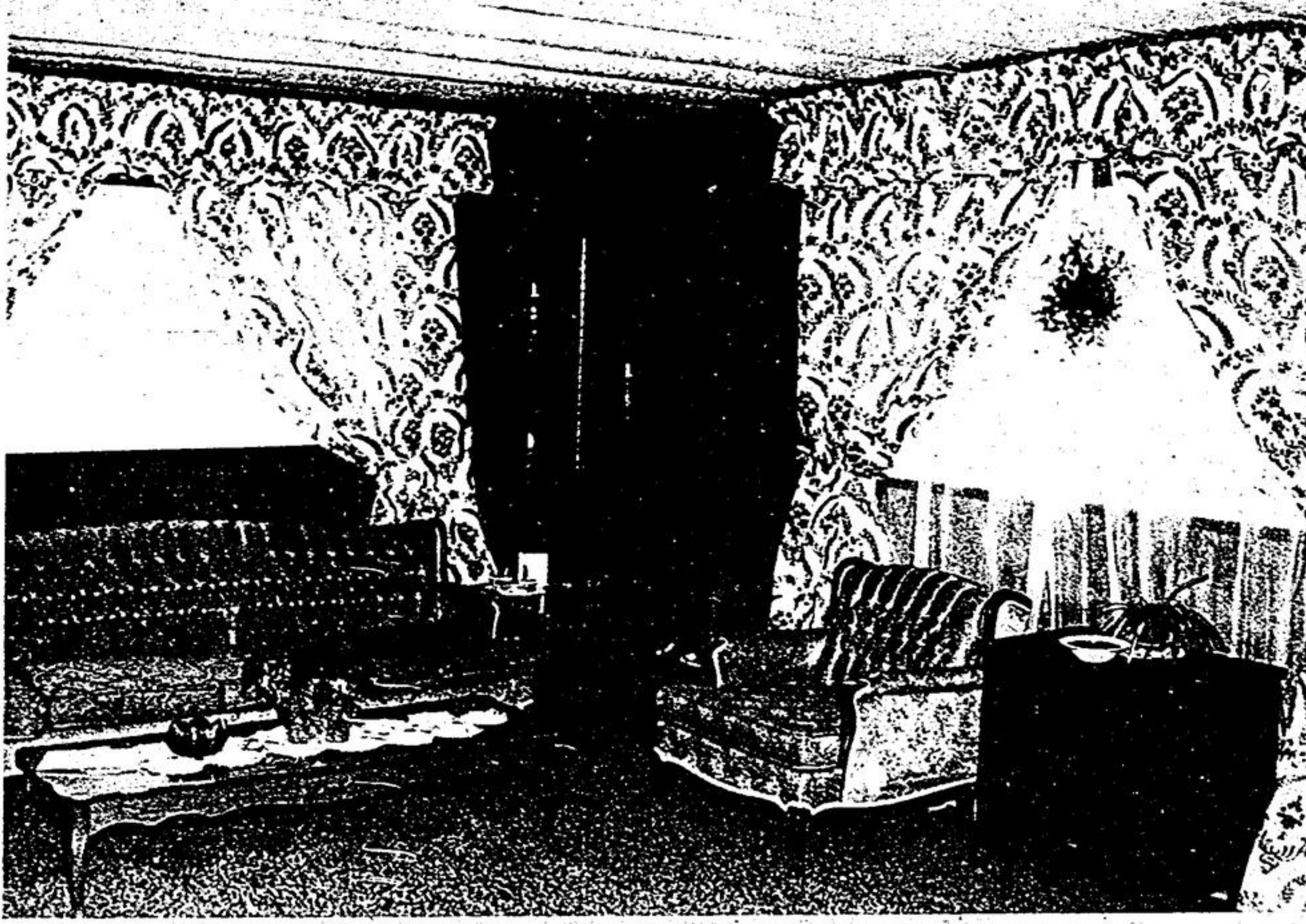
After purchasing the modular unit that was built by Glendale Homes of Strathroy, the couple's next step before moving it to their land was to win the approval of Whitechurch - Stouffville Council.

"We even had to obtain pictures of modular homes on foundations in order to prove to Council that its not a mobile home," explained Mrs. Boncheff in an interview at their home this week.

"But it's a beautiful warm home... just like living in a three bedroom bungalow. Actually, it's the only way to build if you have your own land," she added.

The primary purpose for Mr. and Mrs. Boncheff moving next to their fruit and vegetable stand with greenhouses nearby was "there's too much money to be lost if the temperature drops in the greenhouses, and at least now we're right next door," commented Mrs. Boncheff.

The modular home was "delivered" Dec. 20 and the couple moved in two days later.



Whitechurch-Stouffville's first modular home is located on a site near conc. 7, on the Stouffville-Gormley Road. Owner, Chris Boncheff, R. R. 4, Stouffville, paid \$16,500 for the compact unit. The spacious interior of one room is shown here. Michael Gerhardt.

"Armchair Chats"

Drug store was something more

By Geo. W. Grose
This was one of our more dignified establishments, with plate glass windows, the distinctive pestle and mortar sign over the door and in the windows, flanking the door, large glass containers filled with colored liquids... also some growing plants.

The interior was just as impressive — also surprising, for all of one wall consisted of shelves filled with jars of various sizes on which the contents of each was printed IN LATIN. Underneath the shelves were scores of drawers

with more Latin inscriptions — a silent testimony to the erudite learning of Julian Simpkin, its proprietor. He was not very impressive in appearance — being short, inclined to stoutness, with a wispy head of hair and wearing glasses, over when he peered. He was a bachelor, which perhaps was one reason why he was known to most as "Pa" Simpkin!

The opposite wall held another surprise, for a large section was filled with books of all sorts and comprised our public library! The remaining space was given over to patent medicines and toiletries. The third surprise came when one turned the back of the store, for it was partitioned off to make the village post office — always a convenient and popular meeting place. So Pa Simpkin was an important man in our little community —

representing three fields of public service: the Government, medicine and education! Still another claim to distinction for "Pa's" establishment was that it was illuminated by acetylene gas — a much brighter light than produced by the oil lamps that every other public building and houses used.

Quite a number — of both sexes — made use of the public library and surprisingly enough, it had a peculiar fascination for some growing boys who preferred reading to sports. Books of adven-

ture by G. A. Henty, R.M. Ballantyne and Robert Louis Stevenson held us spellbound... and quite unconsciously we absorbed much history and other useful bits of knowledge in the process. "Pa" was always quietly in the background with help, encouragement or suggestions — and looking back I am sure that he often steered our minds into reading paths that would influence us for good. I have a firm conviction now that the habit of reading

wholesome books and being exposed (often without realizing it) to the literary style of different authors, is an education in itself.

DESIGNER-DRAFTSMAN

required

by major construction company engaged as designer builders in systems construction. Minimum technical qualifications at least 2 years in post secondary architecture or construction management. Practical experience is a pre-requisite location Markham, Ontario.

Please send resume to Box. 721.

- LIFE • TERM • MORTGAGE INSURANCE
- REGISTRATION • PENSIONS • EQUITIES
- EDUCATIONAL PLANS • ANNUITIES

Ronald A. P. MORAN C.L.U.
294-5959

Licensed with London Life Insurance Company



BUSINESS DIRECTORY

Public Accountants

BREGMAN, SHARPLEY & KUSATZ
Chartered Accountants
22 Main St. W.,
Stouffville, Ont.
Resident Partner
S. Kusatz, C. A.
640-1991 964-1370

DAVID A. HUNTLEY
Chartered Accountant
641 Davis Drive,
Newmarket, Ont.
895-9457 881-8902

LEONARD R. ROSENBERG & ASSOCIATES
Chartered Accountants
84 Yonge St. S.,
Aurora
Phone 887-5720, 889-2741

FUNERAL DIRECTORS

O'NEILL
Funeral Home
STOUFFVILLE
Funeral Director

MRS. FAY MINTON
Continuous Telephone
Service Day or Night
Ph. Stouffville 640-2855

Ontario Land Surveyors

R. G. McKIBBON
Ontario Land Surveyor
264 Wellington W.
Markham
Phone 294-3754

Optometrists

F. RICHARD BLACK, O.D.
OPTOMETRIST
STOUFFVILLE
MEDICAL CENTRE
For appointment
640-3722
Hours: 10 a.m. - 8 p.m.
Every Tuesday



AUTHORIZED SEALMARK DEALER



Rock of Ages guarantees every Sealmark memorial not only to you but also to the cemetery where it is erected.

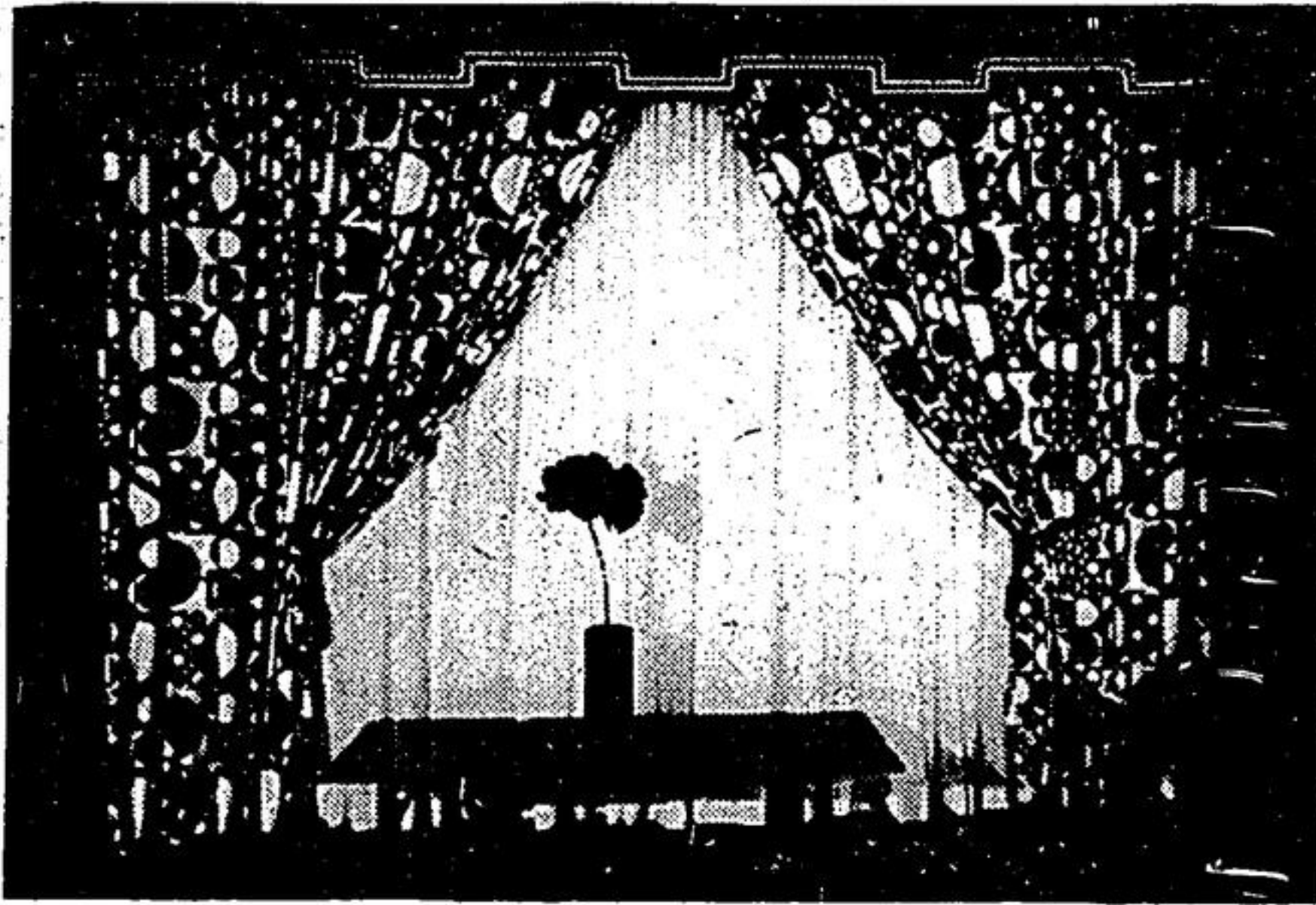
We carry in stock, at all times a large selection of beautiful designs crafted in Granite, Marble or Bronze for your choice. Satisfaction guaranteed. Monuments erected in all cemeteries. Cemetery lettering and renovations. Out of respect and understanding, we refrain from untimely solicitations. When time and circumstances are convenient, will you please consult us.

Appointments or Courtesy Car by Request.



STOUFFVILLE MONUMENT WORKS

113 MAIN ST. WEST PHONE 640-3643 STOUFFVILLE P.O. BOX 235



Custom Drapes 7 Days Delivery & Installation

By direct factory to you selling, and volume buying, we at National, eliminate costly overhead. Our qualified drapery consultants carry a complete range of our newest and finest fabrics and are ready to measure your windows and give you an exact, on-the-spot quote — no extras.



the finest custom drapes for your home at the lowest possible price!

National Drapery Company

Head Office 9 milvan drive, Weston

SHOP AT HOME SERVICE
TORONTO - CALL 742-1880

Out of Town - Call Collect
Visit our Second Metro Location

SCARBOROUGH TOWN CENTRE
McCOWAN at 401

Wise Guys Buys

LOOK AT THESE PRICES

ON THE BEST USED CARS AND TRUCKS IN THE AREA

| | | |
|----------------------------------------------------------------------------------------------------------------------------------------------------------------------------------|-----------------------------------------------------------------------------------------------------------------------------------|------------------------------------------------------------------------------------------------------------------------------------------------------------------|
| 1972 CHRYSLER 4 door hardtop, air cond, power steering & brakes, power windows, radio, 37,000 miles, original one owner. Lic: EAP 171. SALE PRICE \$2975. | 1972 DODGE DEMON 2 door coup, slant 6 automatic, radio etc., Low mileage. Lic.: EBM 492 SALE PRICE \$2595. | 1971 PLYMOUTH FURY II 2 door hardtop, beautiful Green metallic, 318 V.8. automatic, power steering, radio Lic: DYS 361 SALE PRICE \$1675. |
| 1971 DODGE CHARGER Finished in Honey Gold, matching vinyl roof & Tan vinyl interior. Fully equipped. Lic: DVO 850 SALE PRICE \$2495. | 1970 DATSUN 1000 Series 4 speed, 29,000 miles, radio, excellent condition. Lic: AXF 084 SALE PRICE \$995. | 1969 CORONET Super Bee 4 speed fully equipped. Lic: FLA 132 As is. SALE PRICE \$1195. |
| 1969 DODGE 1/2 Ton Pick Up 42,000 original miles, V.8, radio etc. Lic: C70582 SALE PRICE \$1495. | 1972 DODGE D200 3/4 Ton Big 6, radio, complete with Winebag camper Lic: C61580 SALE PRICE \$2895. | 1972 FORD 3/4 Ton 4 speed trans, radio, completely reconditioned, very scarce model. Lic: C63791 SALE PRICE \$2495. |

LESS YOUR TRADE AT THE BEST ALLOWANCE ANYWHERE!



EMERALD ISLE MOTORS

MAIN ST. STOUFFVILLE

640-2400-1

887-5787

