

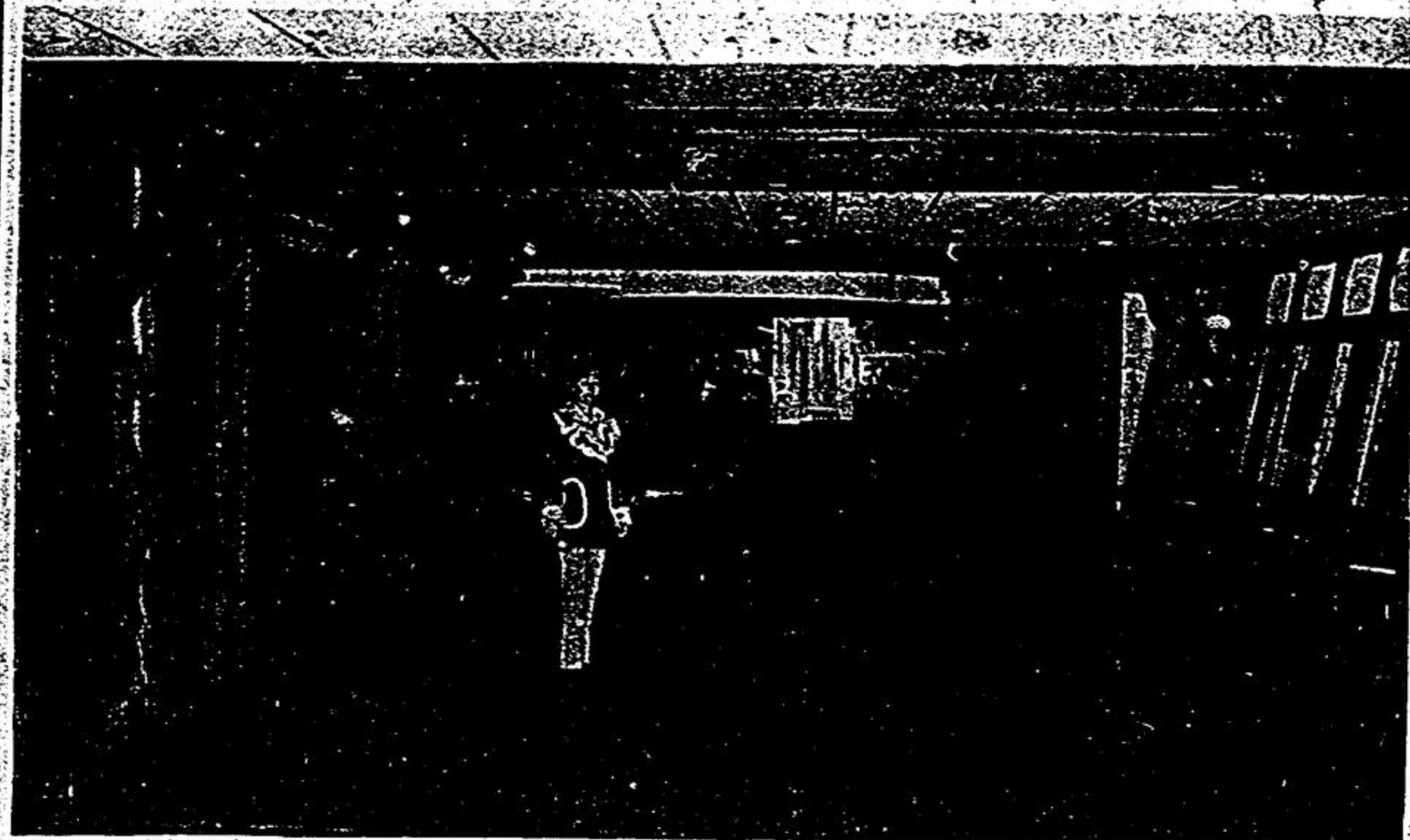
Beautiful lounge



The new lounge was an impressive facility featured at the official opening of the Markham Centennial Centre, 7th Line, Saturday night. The lounge, shown here with Ward 3 Councillor Carole Bell, was designed and built by Keffer Contracting Co. Ltd., Builders and Designers, of RR 1 Markham. The room is completely broadloomed except for

a rectangular dance floor in the centre, complimented with wood beaming, panelling and colonial furniture. The bar is characterized by a 'pot-bellied' stove effect. The entire arena ice surface is clearly visible from the lounge.

— Mike Gerhardt.



Congratulations Markham!

We were glad to be a part of creating this fine new recreation centre in our town.

Twice recently we have had the pleasure of participating in large projects of this kind for Markham. We look forward to any opportunity to serve our home community in the future. Big projects, however are not the only thing we do. We have gained a Province-wide reputation as builders of beautiful, exclusive, new homes and renovations of all kinds.

Congratulations to the Town of Markham. We are proud to have been retained as consultants for the construction of the Markham Centennial Centre.

The richly appointed lounge, lobby and furnishings are the fine workmanship of Keffer Construction Limited of Markham, who recently also completed the auditorium hall in Markham Arena at highways seven and forty-eight. It was a pleasure to work with all the contractors including also: West York Const. Ltd. (Prime), Norak Steel Cons. Ltd. (Structural Steel), Downs Mechanical Contractors (Mechanical) and Arnold Industrial Electrical Contractors Ltd. (Electrical).

We believe we can say without equivocation that the workmanship, completion of the work, and co-operation, of Keffer Construction is second to none.

Again, congratulations!

Tom Akister

KEFFER BUILDINGS LIMITED
DESIGN - ENGINEERING - SUPERVISION
PETERBOROUGH, ONTARIO
705-742-0872

MEMBER OF THE **BOLD** ORGANIZATION

RATCLIFF LUMBER LTD.

MEMBER OF THE **BOLD** ORGANIZATION

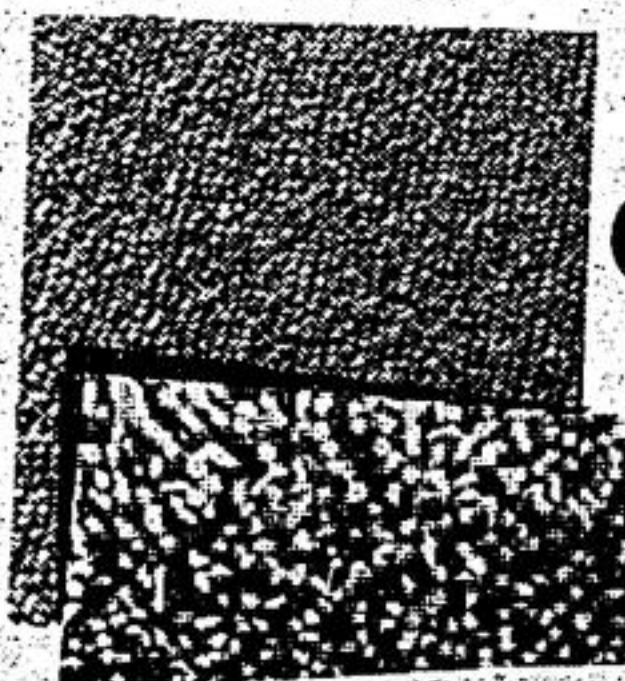
REC. ROOM SAVINGS

4 x 8 Woodcraft
PANELLING
Light Oak & Tawny Ash
Panel **\$3.49**



SKIL SAWS

7 1/4 Saw Lightweight
2 HP. motor
7 1/4 Blade **\$26.95**



Indoor-Outdoor
CARPETING
5 colours --
\$1.99
Sq. Yd.

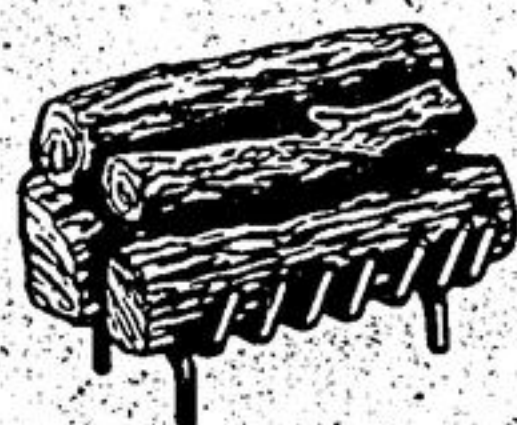
E-Z BRICK

A real brick Facing
Inca Red colour
8 Sq. Ft. Package **\$4.95**

MIXKOTE DECORATIVE STUCCO

24 lb. Bag
\$4.95

3 hour FIRE LOGS



Carton of six
\$4.98

ATTENTION SPECIAL ATTRACTION

SAT. January 19-10 A.M. - 2 P.M. Ratcliff Lumber at Unionville will have Factory Reps. from the following Companies on Hand.

- Milkote -- Decorative Stucco
- Skil -- Power Tools
- E Z Brick -- Brick Facings
- Spindle Flex -- Shelving Systems

BRING YOUR PROBLEMS TO THE EXPERTS.

STORES HOURS
Mon. Wed. 8 a.m. - 6 p.m.
Thurs. Fri. 8 a.m. - 9 p.m.
Sat. 8 a.m. - 5 p.m.

RATCLIFF LUMBER LTD. UNIONVILLE
HWY. No. 7 at Kennedy Rd.



keffer contracting co. ltd.

MARKHAM 294-2356

BUILDERS & DESIGNERS

CARL KEFFER, President