

# Action Traction!

## WINTER EXPRESS



WINTER EXPRESS WHITEWALL  
4-Ply Polyester or  
Polyester-Belted Nylon

F78/14  
(75/14) **18.98**  
EACH IN PAIRS  
After discount  
for cash

A GREAT GRIP  
and a  
CUSHIONED  
RIDE!

### 'Old Faithful' of the Snows—

Winter Express offers a trio of dependable snow-tires: Whitewall in 2+2 Polyester-belted Nylon; or 4-ply Polyester. Blackwall in 4-ply Nylon. All 3 types are 5-Year Road Hazard Insured; 30-Month; 30% Pro-rated Wearout-Discount Allowance. All big big value!

#### WINTER EXPRESS IN A CHOICE of 3 TYPES

SIZE Priced each after discount for cash when sold in pairs	WHITEWALL 4-ply Polyester or 2+2 Polyester- Belted Nylon	BLACKWALL Tread not shown 4-Ply Nylon	SNOW- TRAVEL BLACKWALL White, add \$1.50* Double-ply Nylon Not insured
	600/12	16.10 †	—
520/13	—	12.82	—
A78/13 (600/13)	15.82	13.63	12.30
B78/13 (650/13)	16.48	14.68	12.97
C78/13 (700/13)	17.38	15.48	—
B78/14 (645/14)	—	14.11	—
C78/14 (695/14)	17.48 †	—	—
E78/14 (735/14)	18.00	15.72	13.16
F78/14 (775/14)	18.98	16.48	13.76
G78/14 (825/14)	19.90	17.76	14.53
H78/14 (855/14)	21.23	18.86	15.44
885/14 Whitewall	—	21.80	—
560/15 (2+2 Belted only)	15.77	—	12.68
590/15	—	14.20	—
F78/15 (775/15)	18.98	16.48	13.76
G78/15 (825/15)	20.28	17.76	14.53
H78/15 (855/15)	21.52	18.86	15.44
J78/15 (900/15) Whitewall	—	21.80	—
600/16 Tube-Type	—	13.58	—

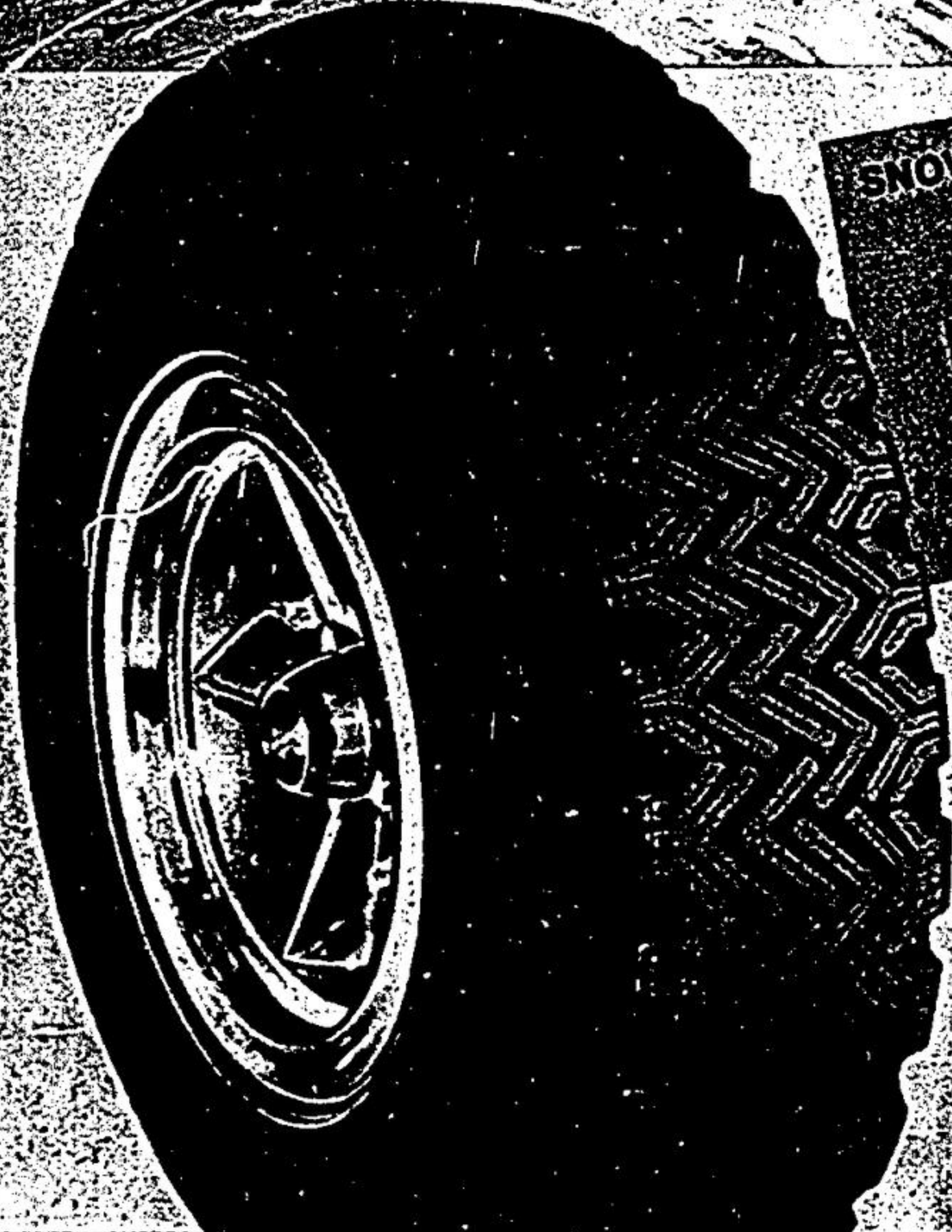
†Tread not illustrated

\*where available

### Snow-Travel: Safe, thrifty Nylon

Snow-Travel gives you a lot for the money. Double-ply, double-strength Nylon with a deep bite. Meets or exceeds all government safety standards. Not Road-Hazard Insured. You can buy insurance for \$1.00 per tire. See store offer.

**NO CHARGE** for TIRE INSTALLATION when you buy our Dill or Schrader Valve at our regular catalogue price of \$1.00. We must install tire and valve together. "A tire isn't new unless the valve is too!" Static Balance, tire and wheel... \$1.00. Discount for cash in lieu of Bonus Coupons.



SNOW-TRAVEL BLACKWALL  
DOUBLE-Ply Nylon  
F78/14 (75/14)

**13.76**  
EACH IN PAIRS  
After discount  
for cash

USE YOUR CREDIT CARD