

Ball player wins trophy

CLAREMONT — Ball players from five years of age and up sat down to a delicious turkey dinner at Legion 225 Hall last Thursday, and Marlene Norton was the winner of the Kathy MacGregor Memorial Trophy.

After presenting the head table, Jean Bradshaw, President of the Ladies Auxiliary, began presenting the many trophies.

All members of the house league teams received crests donated by the Claremont Recreation Association.

The winners of the Ontario Region Softball Association received cheques from the Legion Auxiliary. Cheques were also given by the Legion to the Bantam Girls and

Bantam Boys for winning the girls league championship.

Many coaches were the proud recipients of gifts from their team members.

On behalf of two teams, Dave MacDonald was presented a lounge chair for his work as umpire and for performing numerous jobs around the diamond during the season.

The Legion and Ladies Auxiliary were thanked for preparing the successful banquet.

Saturday evening, coaches Alan and Carole Redshaw, Manager Mary Irtland and two team members went to Norwich to the O.R.S.A. banquet and brought home the trophy for the Pee Wee Girls.



Wins M.V.P. award

Eighteen year old Marlene Norton, has been selected 'most valuable player' on the Claremont juvenile girls' softball team and winner of The Kathy MacGregor Memorial Trophy for 1973. Patti (Madill) Finch made the presentation, Oct. 25, at an awards banquet in the Claremont Community Hall. Marlene is the daughter of Mr. and Mrs. Alvin Norton, R. R. 1, Goodwood. —Jim Thomas.

MORE FOR YOUR MONEY

PERCENT INTEREST ON GUARANTEED INVESTMENT CERTIFICATES

CITY TRUST

CITY SAVINGS AND TRUST COMPANY
95 YONGE ST., TORONTO • TELEPHONE 416 864-1090
MEMBER CANADA DEPOSIT INSURANCE CORPORATION

CONTACT YOUR LOCAL FINANCIAL ADVISOR

Fires two highs

STOUFFVILLE — Doris Redquest not only grabbed the high triple for the night with a 660, but also the high single with 245 in the Thursday 7 p.m. Ladies Bowling League.

Doris' other hot single was 230.

Other scores over 200 included Beverly Sefton, 215 and 229; Gail Hunter, 200 and 205; Grace Bulley with 202; Audrey Gibson, 212 and 207; Joanne Harper, 242; Judy Armstrong with 200 and 216; May Ostrander, 203 and 222; Flora Fortar, 201; Marlene Bell with 221; Joyce Graham, 215; Joyce Shadlock, 248 and 227; Judy Bond with 221; and Muriel Illingworth, 211.

his team, ahead 2-1, on passes from Andy Leitch and Jeff Roy. Some hard digging in the Oshawa end by Howie Jones had given Stouffville control of the puck.

Outshot by a 3-1 margin in the opening frame, it was a steady Rick Marshman that kept Stouffville in contention.

Oshawa scored once on a powerplay in the second period and the stage was set for an action packed final frame.

Oshawa's Carl Mann dumped in a Ron Laurin pass 40 seconds into the third period, but Doug Taylor responded five seconds later with the help of Ted Assinck and Scott Connor.

Oshawa scored three more with Stouffville coming back each time.

Midgets tie Oshawa 6-6

STOUFFVILLE — The 6-6 tie game between Stouffville Midgets and Oshawa Parkway T.V. last Thursday night was a exciting demonstration by one of the best clubs in Stouffville in many years.

But it was worth the price of admission to watch Doug Feasby and Pat Fitzpatrick play.

Brent Hodges opened the scoring for Oshawa at 8:50 of the first period on a badly screened low drive past Rick Marshall. Eight minutes later Feasby stole the puck from the Oshawa defence and, with the assistance of Fitzpatrick, evened the score.

Then Craig Waite who had teamed with Howie Jones to kill several unnecessary Stouffville penalties, put

RESTONIC mattresses

RESTONIC Dr. Fuller Deluxe

"THE DOCTORS BED"

Especially for Persons who experience morning backaches.

FREE GIFT CERTIFICATE \$50.00 ON Purchase of Box Spring and mattresses

BRICE'S FURNITURE BARN
5 Miles North of Newmarket
Don Mills Rd. — 478-4175
Open 6 Days incl. Sun. p.m. Closed Mondays!

UNIONVILLE Mexican Ball and exhibition

UNIONVILLE — The Unionville Skating Club presents its November Festival Mexicana Ball and championship skating exhibition, Nov. 10 at the Crosby Memorial Arena.

Proceeds from the ball will aid the club's championship fund, and the event will feature such skaters as Linda Roe and Michael Bradley, Glen Lafontaine and Karen Newton, Cheryl Richardson, Linda Taylor, Nancy Boston, John Belec, Pamela Iteck, Lynn Hale, Linda Belec and Mary Jo Thompson. They will compete in the Ontario Sectionals this year.

The ball will also feature the Unionville

Bursary Fund Draw to be held Nov. 10, with the first prize being an all expense paid trip to Cozumel, a Mexican island in the Caribbean, and a second prize featuring a black and white television.

Tickets, available from any of the skaters, are \$1, and the prize will be given to the person selling the winning ticket.

Admission to the Mexicana Ball is \$22 per couple and to the skating exhibition only \$1.50 for adults and \$1 for children and skaters.

New Home Construction will begin soon on a residence and backyard pool, south of the home of Mr. and Mrs. Norm Fretz, William Street.

TOWNSHIP OF PICKERING VACANCIES IN RECREATION PROGRAMS

There are a few vacancies in the programs listed below. For further information contact Mrs. J. Alfrey at 839-5103 or 839-5104.

DUNBARTON FITNESS CLUB

This program unlimited use of bicycles, rowing machines, weights, and mat room. Monday to Thursday from 7:00 p.m. to 10:00 p.m. Swimming pool will be available to you during open adult and family swim periods.

Saunas and Billiard Room will be available anytime between 1:00 p.m. and 10:00 p.m.

FEES:
\$40.00 per year
\$60.00 per year per couple
\$30.00 per year per commercial Traveller

JUDO

Orange and Yellow Belts Only. Don Beer Arena
Mondays: Yellow Belt 6:30 - 7:30 p.m.
Mondays: Orange Belt 7:30 - 8:30 p.m.

FEE: \$10. 18 weeks

FIX IT

Learn how to repair small electrical appliances. New course will be starting on November 5th, for 5 weeks.

Monday evenings 7:30 p.m. to 9:00 p.m.

Fees: \$5.00 per person

LADIES RECREATION CLUB

A few vacancies remain for the Ladies Recreation Club at the Don Beer Sports Arena on Tuesday or Wednesday mornings between 9:30 a.m. and 11:30 a.m. for women without children as the program has a large number of children at the present time. A reduced registration fee will be charged.

COMPETITIVE BADMINTON

A 20 week program of competitive badminton in an informal atmosphere at Dunbarton High School in the boys gymnasium on Thursday evenings between 7:00 p.m. and 10:00 p.m.

FEES: \$5.00 for 20 weeks.

MEN'S BASKETBALL

Mondays, Dunbarton High School

FEE: \$5.00 for 20 weeks.

TOWNSHIP OF PICKERING

LAST TIMES TONIGHT

STEWART EXPRESS

Starts Friday!

All the love and all the laughter of the Broadway hit!

ONE COMPLETE SHOW AT 7:30 p.m.

40 Carats

Liv Ullmann, Gene Kelly, Edward Albert, Binnie Barnes

BURT REYNOLDS

DYAN CANNON

Shamus

OUR NEXT ATTRACTION "BROTHER OF THE WIND"

Only Professional Saw in 6 lb. class

McCULLOCH POWER MAC 6

with Automatic Bar & Chain Oiling

CUT! CARVE! CARPENTER! CONTOUR!

From Felling Trees To Fancy Sculpting!

POWER MAC 6 IS THE CHOICE OF TREE SURGEONS AND CRAFTSMEN EVERYWHERE!

Our finest lightweight saw only 6 1/2 pounds! Less cutting attachments! Cuts an 8" log in 6 seconds! Outcuts many saws weighing twice as much! Mastergrip handle on top for one hand control between cuts.

New Low Price! \$159.95

with factory installed 11" bar and chain

Come In Now For A Free Demonstration

CARDS

DOMINION HARDWARE & APPLIANCE

29 MAIN ST. W. STOUFFVILLE

640-3622

MERCURY CHALLENGES ALL COMERS!

IF YOU CAN FIND ANOTHER SNOWMOBILE WITH ALL THESE FEATURES **BUY IT!**

- OUR MERCURY SNOWMOBILE GIVES YOU:**
- MERCURY CONSUMER PROTECTION PLAN** — Mercury has a 12-month machine warranty against defects. Every part, including drive belt, spark plugs, battery, even head lights.
 - MERCURY CO IGNITION** — Mercury's Mark II features Thunderbolt CO Ignition for reliable, cold weather starts.
 - MERCURY ELIMINATES RADIO/TV INTERFERENCE** — Mercury's new exclusive inductor spark plug eliminates interference with radios and television.
 - MERCURY RIDER COMFORT** — Mercury's new "Three Layer" sandwich seat. Soft shock absorbing in both directions.
 - MERCURY'S IMPROVED HANDLING** — Merc 440 Max and 440 SR's new stabilizer tension bar connecting both skis for wide track stability and unmatched control.
 - MERCURY SUPER TRACTION** — Mercury's new super-climbing tread with cross control cleats improves traction, reduces "side slide".
 - MERCURY DELIVERS MORE POWER TO SNOW** — Mercury's one-piece rod-reinforced rubber track is internally log-driven. No sprocket holes.
 - MERCURY IMPROVES VISIBILITY** — Mercury's dual high-low headlamps throw 90 watts as opposed to other sleds with single 60 watt headlamp.

THE RELIANT Your Trail Boss Headquarters

Gord's Marine

Claremont

649-2007

Skiroule... We deliver.

Here. And here.

On the snow, there's more to a Skiroule than good looks. There's a reliability you can depend on. Because every Skiroule is engineered with Coleman quality and dependability. In two great series.

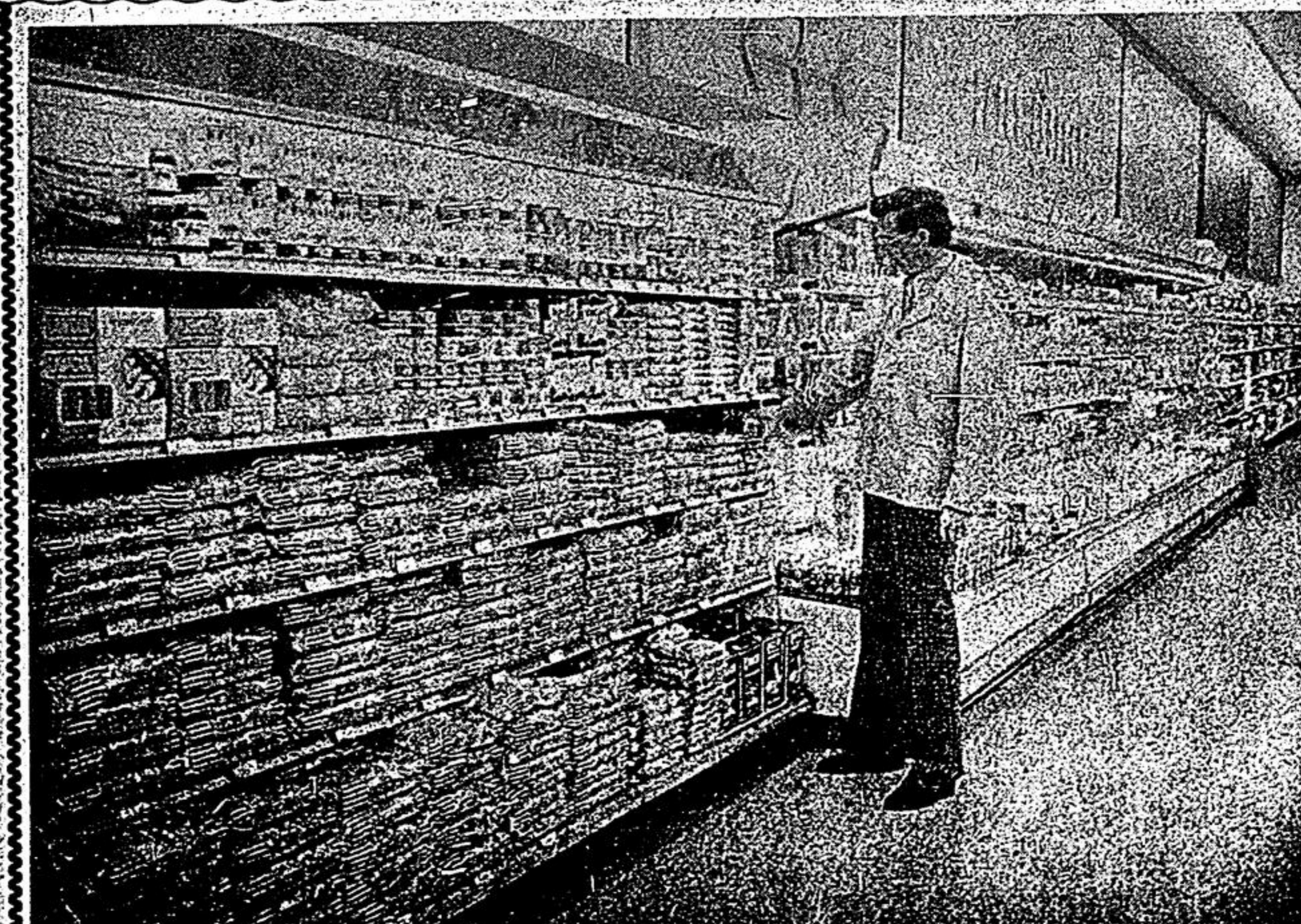
The new Series III Skiroule features a completely new line of Skiroule engines — with Wankel models — developed to deliver reliability without sacrificing performance. And they're quiet, too. Plus more new refinements: Like a multi-ply track — for superior climbing; an adjustable super slide-bar suspension — with optional bogies — for a smooth ride on any terrain; and an orthopedically designed seat — for more riding comfort. So there's more to this series than good looks. There's a reliability you can depend on.

And the Series II. All tried and trusted. And family priced. With solid 18-gauge steel chassis and rugged polycarbonate hood. It's the series for value and versatility... for looks and reliability.

skiroule

JORDAN WELDING
R. R. No. 1
ASHBURN

BETHESDA Sales & Service
R. R. No. 4 STOUFFVILLE



NOW Stouffville IGA has ITALIAN FOOD

You don't have to be Italian to enjoy Spaghetti and meatballs, veal or eggplant parmigiana, baked clams. It's no wonder Everybody Likes It

Visit Your Friendly **STOUFFVILLE IGA**