

Save 20% on PARTS and INSTALLATION

Save 20% on 11-STEP WHEEL ALIGNMENT

CANADIAN TIRE

UPPER and LOWER BALL JOINTS

Sample Savings: Chev. and Pontiac 1965-'70 (most models)

UPPER Ball Joints
Reg. \$7.49 each—
Over-the-counter... **5.99** EACH

LOWER Ball Joints
Reg. \$8.98 each—
Over-the-counter... **7.18** EACH

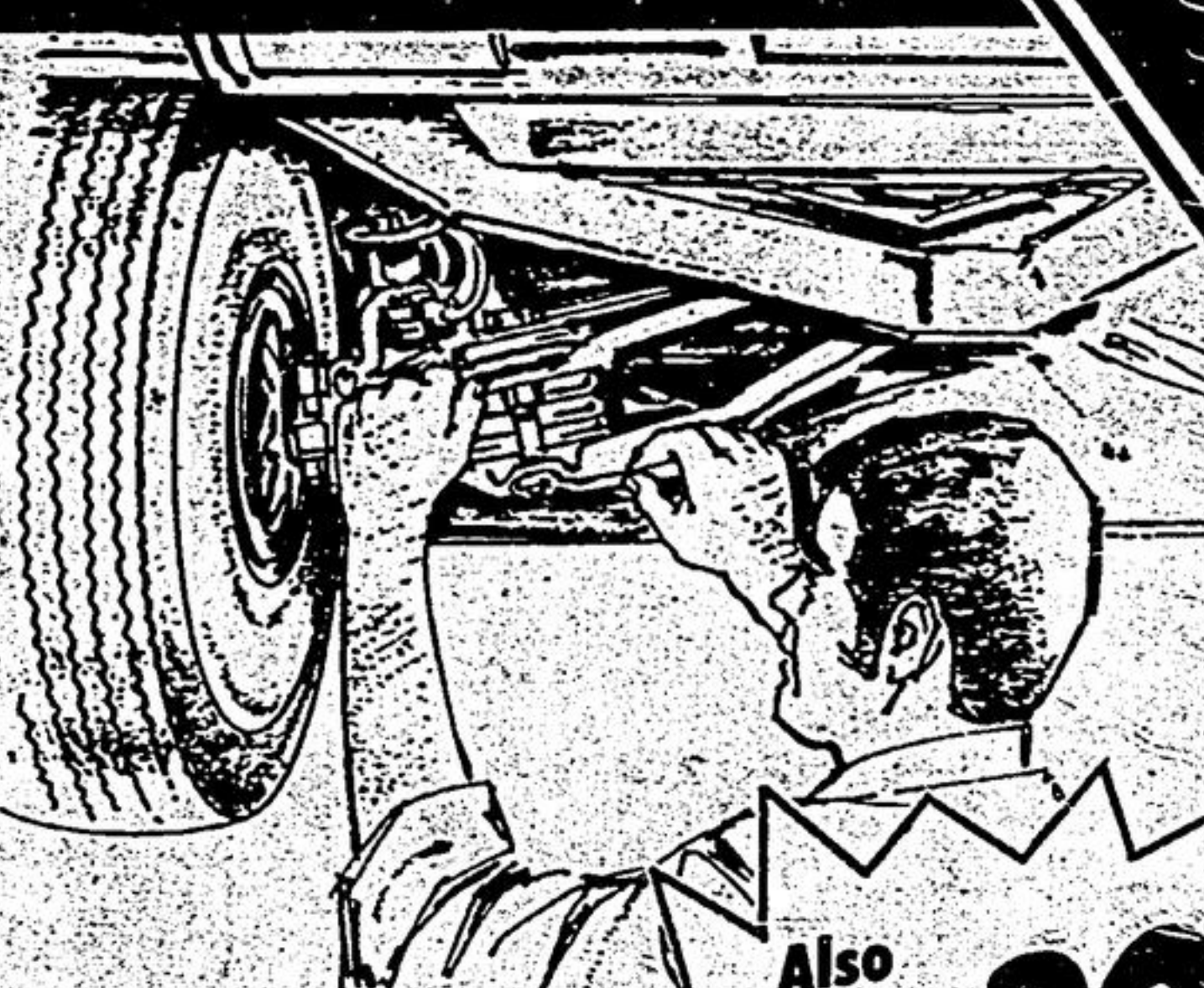
Similar savings for most Canadian and American cars

TIE-ROD ENDS

Sample Savings—Most Chev. and Pontiac models '63 to '70

OUTER: Reg. \$3.99 to \$5.29 **3.19** to **4.23**
INNER: Reg. \$4.49 to \$7.69 **3.59** to **6.15**
Over-the-counter

Similar savings for most Canadian and American cars



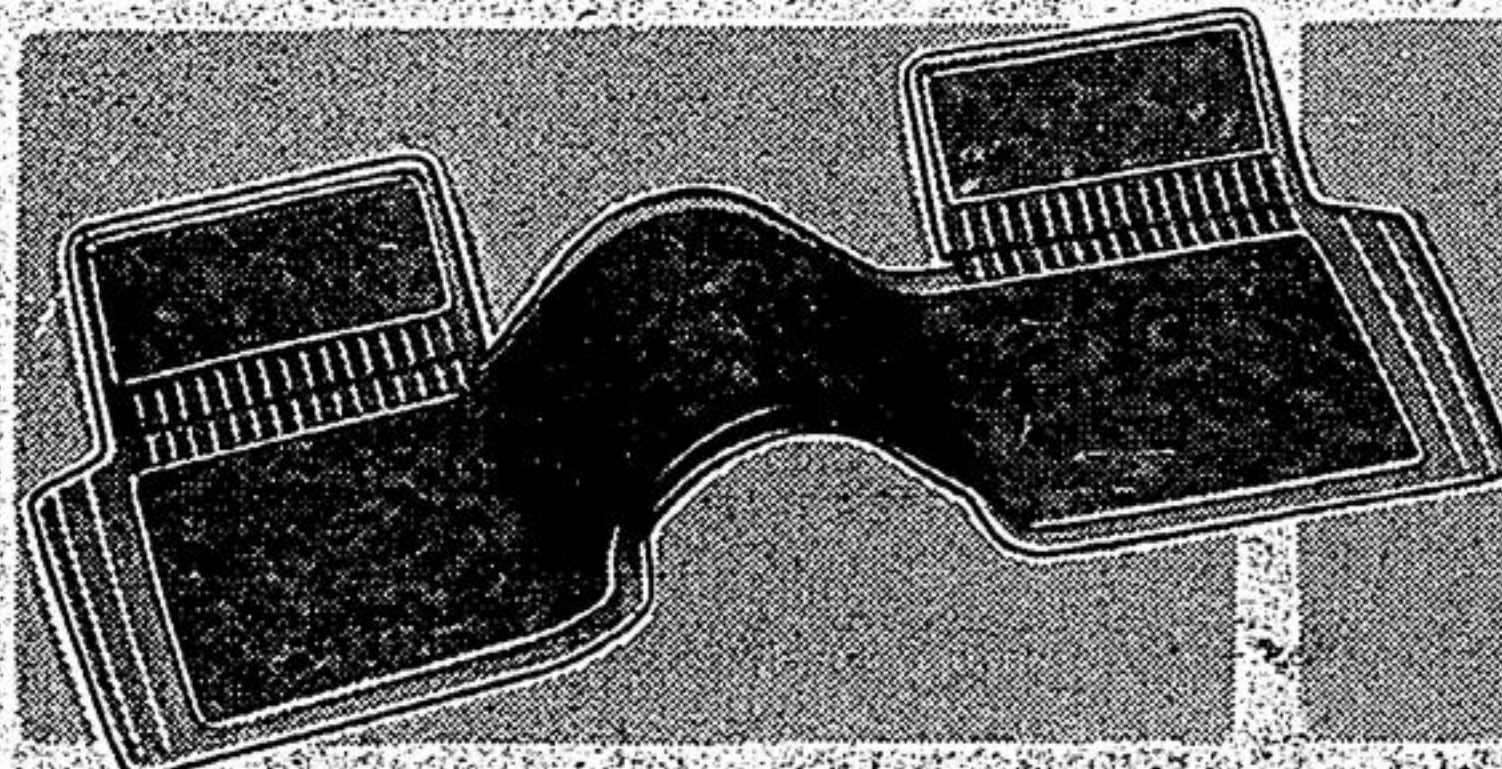
Also **Save 20%**
on EXPERT INSTALLATION
of Ball Joints and
Tie-Rod Ends
Be safe—Make your appointment NOW!

INCLUDING Steering and Suspension Check

- Set caster and camber
- Adjust torsion bar where applicable
- Steering wheel centering
- Adjust steering gear
- Adjust front wheel bearings
- Correct tire pressure
- Spin wheels to check balance
- Check for wheel bearing noise
- Correct any toe change
- Full steering inspection
- Front/Rear suspension check
- For most popular cars

(Parts and installation extra) Make your appointment today, Save 20%

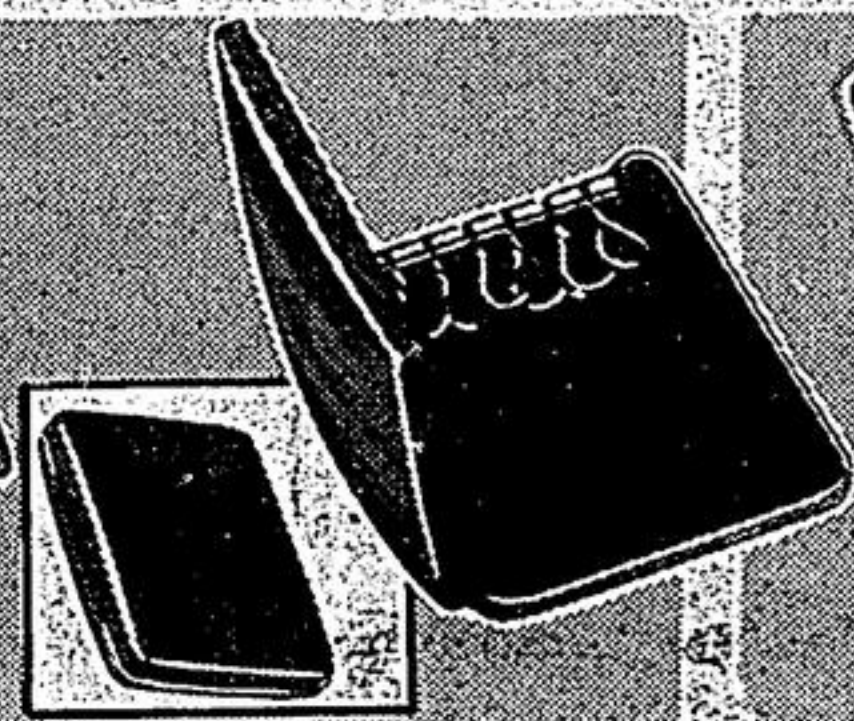
Fall Sale Days bring worthwhile economies for motorists...



Sculptured Front Car-Mats

REGULAR \$7.66 each
6.66 EACH

Rich-textured vinyl with 'Velcro' grippers to hold mats firm. Trimmable 1-piece 64 x 28 1/2" size in clear tints of Blue, Green, Red or Black. 31-3670X



Key Case

REG. \$1.10
.88

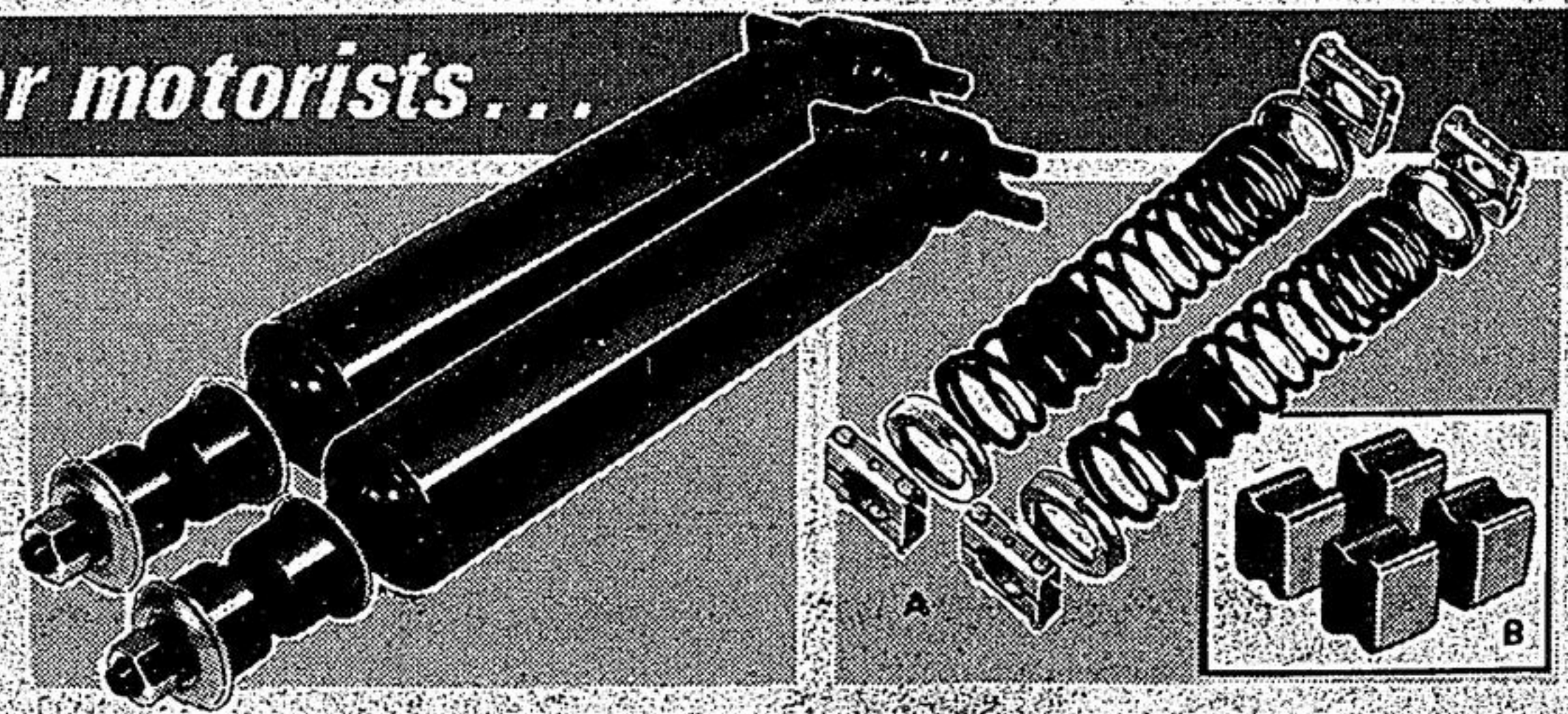
Padded woodgrain-style vinyl on metal; 6 key hooks. Flips open/shut. 66-1021



Rad. 'Purge'

REG. \$1.29
.99 18-Oz.

Quick 2-stage process! Half of can is 'Cleaner', rest is Neutralizer. 38-0830



Shock Absorbers

REG. \$11.98 pr.
SAVE \$2.00 **9.98** PAIR

'Ride-O-Matic' shocks for a cushioned, safer ride. Available for most cars. (Installation extra). 22-0900X

A Extra Capacity Load Lifters

For station-wagons and cars. Up to 1500-lb. over-load. For most models. Reg. \$6.59. 22-0042. **5.89** SET

B Rubber Coil-Spring Lifters

For sagging front and rear springs. Set of 4 Small, Reg. \$1.99 or 2 Large, Reg. \$1.95. 22-0016X. **1.69** SET

Summer and Winter RADIALS they are the greatest



Illustrated: Summer-Tread Radial: Safety '99'

PAIR PRICE EACH after Discount for Cash* (with Trade-In)			
WHITEWALL Tread not shown SIZE	SUMMER TREADS		WINTER TREADS
	Glide Air (Limited production)	Safety '99'	Hiway-Byway
155R131 165R131 165SR13	22.75 24.98 —	— — 30.68†	— — 30.35
AR70/13 175R131 185SR13	27.41 26.36 —	— — —	— — 33.87
BR78/13 155SR14 165R141	— — 24.65	32.06† 29.26† —	— 30.59 —
DR70/14 ER70/14 FR70/14	29.69 30.35 31.30	34.67 37.67 36.72	— 34.67 36.57
GR78/14 GR70/14 HR78/14	— 32.25 —	38.71† 39.76 42.27	— 38.85 —
HR70/14 155R151 165R151	— 24.65 26.79	— — —	45.12 — —
165SR15 FR70/15 GR78/15	— — —	31.54† 37.67 39.68†	32.75 39.57 —
GR70/15 HR78/15 HR70/15	33.06 — 34.63	40.71 43.22† 44.74	40.18† 43.46† —
JR78/15 LR78/15	— —	46.36 46.98	48.21 50.63



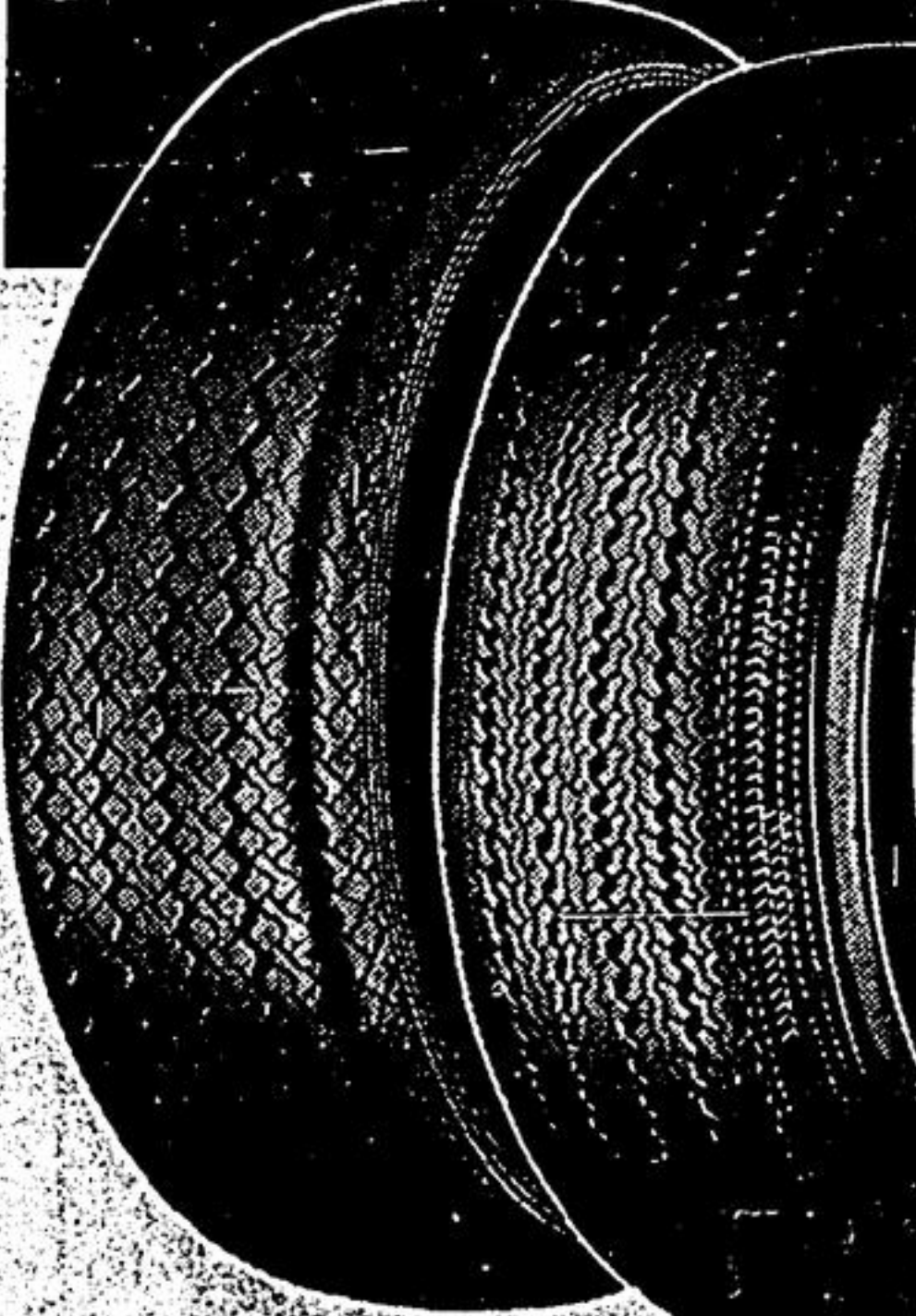
Illustrated: Winter-Tread Radial: Hiway-Byway

Radial Tires can be a new experience in driving. They roll more freely, and, under test, are reported to save gas, outwear close to 2 sets of ordinary tires and rarely puncture. Many drivers claim they are the greatest! But they are not everyone's cup of tea. They have a different 'feel'.

Therefore a 'try before you buy' approach is recommended. Then, if you prefer the old 'feel', ask your Canadian Tire serviceman to remove the trial Radials and return the price you paid for them. (Note: Labor charges—installation, balancing etc.—are not refundable.) Trial period is 10 days.

Save! NON-BELTED TIRES

STAND-OUT VALUES



THE WHIPPET—Best-suited for high-speed highways. Twin-ply Dupont 66 Nylon, shaped very much like a European Radial. Five-Year Road-Hazard Insured. 20-Month, 20% Pro-rated Wear-Out Discount Allowance.

THE CONTENDER—Best-suited for byway-highway use. Built with Polyester, the cord used on all new car bias-ply tires. Five-Year Road-Hazard Insured. 20-Month, 20% Pro-rated Wear-Out Discount Allowance.

SIZE	The WHIPPET Double-Ply Nylon Add \$1.50 for Whitewall		The CONTENDER 4-Ply Polyester Add \$1.50 for Whitewall	
	1 TIRE (and Guarantee) PRICE	After discount for cash*	1 TIRE (and Guarantee) PRICE	After discount for cash*
600/12 (Whitewall)	14.36	13.64	—	—
600/13	11.48	10.91	12.17	11.56
650/13 (B78/13)	12.98	12.33	12.95	12.30
700/13 (C78/13)	13.49	12.82	13.49	12.82
645/14	—	—	12.99	12.34
695/14 (C78/14)	13.38	12.71	13.49	12.82
735/14 (E78/14)	13.75	13.06	14.14	13.43
775/14 (F78/14)	14.25	13.54	14.99	14.24
825/14 (G78/14)	14.95	14.20	15.98	15.18
855/14 (H78/14)	17.85	16.96	17.45	16.58
(Whitewall)	—	—	—	—
560/15	13.20	12.54	—	—
600/15	—	—	13.45	12.78
775/15 (F78/15)	14.25	13.54	14.98	14.23
825/15 (G78/15)	14.95	14.20	16.29	15.48
855/15 (H78/15)	17.85	16.96	17.75	16.86
(Whitewall)	—	—	—	—

No Charge for Tire Installation

when you buy our Dill or Schrader Valve at our regular catalogue price of \$1.00. We must install tire and valve together. *A tire isn't new unless the valve is too! **Static-Balance, tire and wheel, \$1.00. *Discount for Cash is in lieu of Bonus Coupons.

Use your Canadian Tire CREDIT CARD