

# SPORTS

## Squirts eliminated

STOUFFVILLE — Cobourg Legion scored ten runs on four hits to down Stouffville Credit Union Squirts 10-2 in Ontario Amateur Softball Association play, Tuesday.

Cobourg now advances to the 'B' finals against St. Paul's.

Stouffville hurler, Jim Chilvers, who has thrown one perfect game and one no-hitter in reaching the semi-final round, couldn't get going in this final contest. In their two previous games, Chilvers had struck-out 50 of 53 batters he faced. But

when relieved by Randy Underwood in the fourth inning Tuesday, he had allowed nine walks and two hits for five runs.

Stouffville batters had little luck at the plate. They were limited to three hits.

Tim Jackson gave the fans a lift in the fifth when he converted a three-base hit into a four bagger with excellent base running. He had two of the Stouffville safeties; Paul Hillerup the other.

It has been a good year for the boys.

## Midgets advance to league finals

STOUFFVILLE — Stouffville Keith McDowell Midgets advanced to the league softball championships with an eighth-inning, 8-7 win over Richmond Hill, Monday.

On a cold autumn evening, the hot arm of Ron McDowell held back a late game charge by The Hill. They will meet Oak Ridges in the finals.

Ron McDowell jammed a second-inning, three-base hit into the outfield to score three Stouffville runs. He then

scored on a pitching error to cap a five-run romp. Batting played the ultimate difference in the game's outcome and Harold Clodd, and Scott Connor each went two for three.

Richmond Hill spaced four hits over the nine innings and scored seven runs.

With the score tied at 6-6 in the eighth-inning, the Hill went on ahead on an outfield error, but Stouffville came back in their half to go ahead 8-7.

## Jr. 'A' and 'B' take your pick

MARKHAM — The Junior hockey seasons begins officially this Friday, in Markham's new Centennial Arena.

The 'A' team will host Whitby at eight o'clock.

The 'B' club swings into action, Sunday, at 7:30. Bramalea will be in town.

Season's tickets are available for the 22-game 'A' schedule at \$30. Regular admission (adult) is \$1.75.

Season's tickets for the 'B' schedule, also 22 games, is \$22. Regular

admission (adult) is \$1.50. There are also specials for students and children.

**Hockey dance**

STOUFFVILLE — A fund-raising dance, sponsored by the Stouffville Minor Hockey Association, will be held, Friday, Oct. 5, at Cedar Beach pavilion. Musselman's Lake.

Tickets are available in advance from any member of the executive of from Harry Bowes at Houston Pharmacy.

## Minor Hockey

## Register 500

STOUFFVILLE — Five hundred boys are now registered in the Stouffville Minor Hockey Association, with the application deadline extended to Oct. 31.

The final figure could reach 550.

The majority of managers and coaches have already been assigned their teams, with the exception of the Pee-wee House League. Persons interested in helping out in this group should contact Jim Wagg at 640-4650.

At the fall meeting of the Association, Sept. 24, President Ed Grimshaw revealed that two players have been granted releases to move up to Junior. Keith Acton and Nick Fiore will play with Wexford of the O.H.A.

## Basketball

STOUFFVILLE — Try-outs will be held in the Stouffville Secondary School gym, Oct. 1, at 7 p.m., for a men's basketball team to play in the Uxbridge Recreational Basketball League.

The majority of games will be Monday evenings, at Uxbridge High School, beginning in November.

Anyone interested in coaching the team should contact Dave Connell at the school, 640-1433, or at home, 640-2534.

## "Battle of the Sexes"

By Sheila McLeod  
With apologies to  
four and twenty blackbirds.

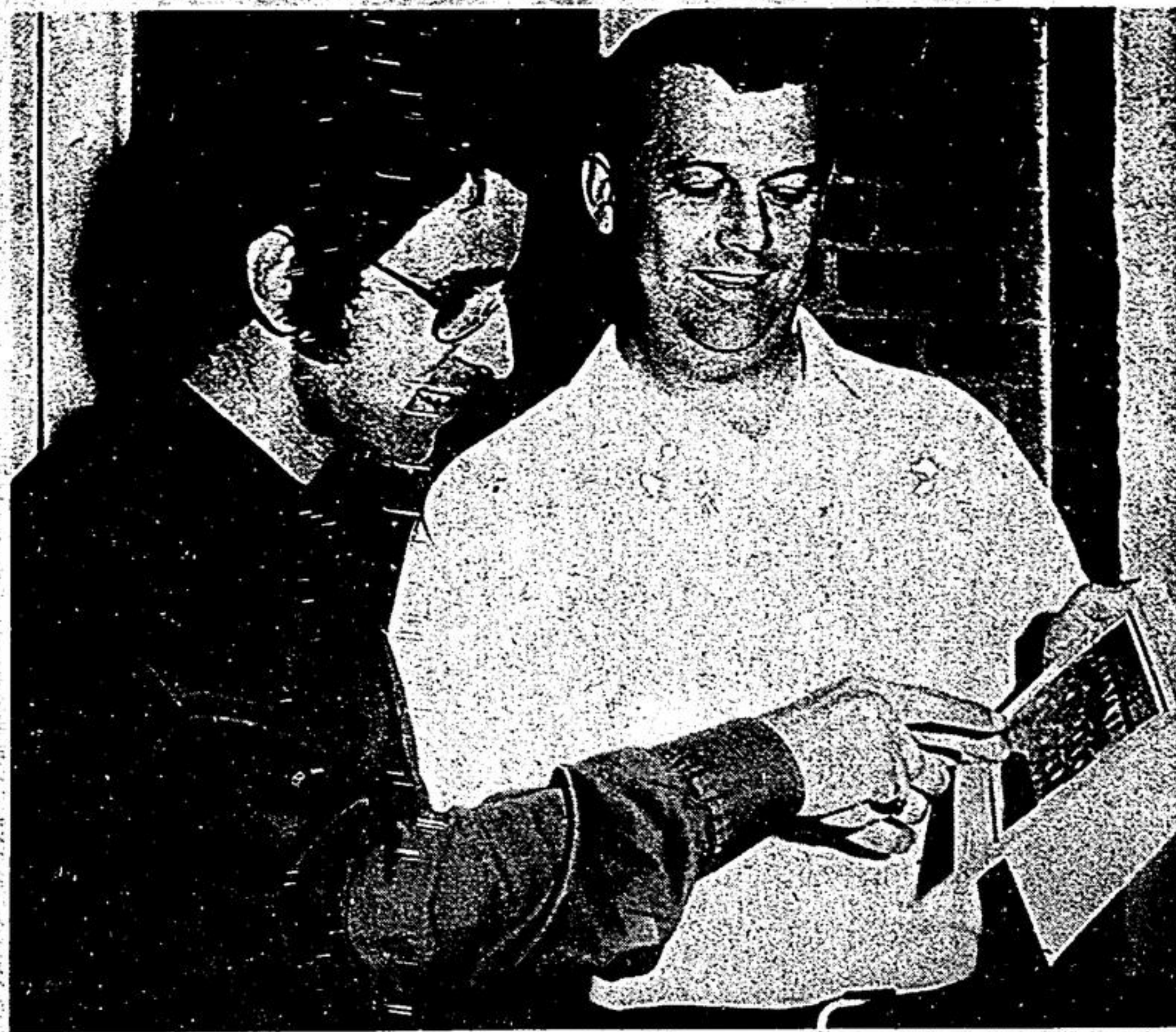
Sing a song of sexes,  
A pocket full of pills  
One hundred thousand greenbacks  
Staked on tennis skills.

Bobby Riggs was routed,  
The gals began to sing,  
"What an over-rated dish  
To serve before Ms. King.

Ms. King is holding court now,  
Bobby's in his place  
Eating, in the kitchen,  
The egg that's on his face.

Like every male chauvinist,  
Imagine his surprise:  
When along came a little lass  
And cut him down to size.

# Swiss team here Jan. 11 players "pay own way"



An overseas visitor was in Stouffville, Saturday, but few people were aware of his presence. Jorg Huber of Wallisellen, Switzerland, met with Stouffville Minor Hockey Association president, Ed Grimshaw and members of his committee, to plan the

forthcoming series, Jan. 11 through 20. Here, Mr. Huber (left) looks at a photo of Stouffville's championship Bantam team, held by Mr. Grimshaw.

— Jim Thomas.

## Town to host civic reception

STOUFFVILLE — The town of Wallisellen, Switzerland doesn't have an Arthur Latcham.

When their 20-player Midget team sets out for Whitchurch - Stouffville next January, they'll ride on the initiative of each player paying his own way. It's a case of work and earn it, or stay at home.

This policy was revealed by Swiss-trip organizer, Jorg Huber. He was a visitor in Stouffville on the weekend to map out plans for the 10-day tour, Jan. 11 through 20.

Each lad, Mr. Huber said, was required to find a job during the spring and summer holiday periods (five weeks), and put their earnings aside to cover travel expenses. "All the money is in the bank," he said.

While Mr. Huber has been in Canada before, it's a first-time experience for the Swiss players and their parents. A contingent of up to 80 supporters is expected. Adults will stay at the

Black Hawk Motor Hotel near Richmond Hill. The boys will be billeted in homes around Stouffville.

The visitors, ranging in age from 15 to 16 years, will play two games here, Jan. 12 and Jan. 20. Other contests are planned for Oak Ridges, Campbellford, Port Perry and Oshewagan.

Activities off the ice will include seats for an N.H.L. game at Maple Leaf Gardens, visits to the Science Centre, Niagara Falls, Oak Ridge Farms, Molson's Brewery and the Parliament Buildings.

A civic reception is planned following their arrival, Jan. 11.

The common language, Mr. Huber said, is Swiss-German, also some speak French. The players use all standard hockey equipment. Their sweaters are blue and yellow.

Playing in an enclosed arena will be something new for the boys since Swiss rinks are all open-air.

## Revive carnival for next spring

STOUFFVILLE — An ice carnival will be reintroduced to appreciative Stouffville audiences again this spring. The convenor is Barbara Summerfeldt. And while the event is seven months away, she's already at work on various phases of the program.

A general meeting of the Figure Skating Club was held, Sept. 18, in Latcham Hall. Professionals, Jean Barclay and Jacqui Armitage explained instructional procedures from beginners on up.

Registration has been very good to date. More skaters can still be accommodated, however. The season opens officially, Oct. 11.

## Host committee

STOUFFVILLE — The Town of Whitchurch-Stouffville will roll out the welcome mat, Jan. 11, for the touring Midget team from Switzerland.

The club will play two games in Stouffville and six altogether in Ontario. The boys will be accompanied by sixty to eighty parents and fans.

To properly host the visitors, as Stouffville was hosted over there, a committee has been established to arrange a schedule of events, accommodation and other essential requirements.

Members are — Ruth Wagg, June Hamm, Audrey Feasby, Jack Watson, Ed Grimshaw, Gary Murphy, Gerry Acton and Wilf Morley.

The players will be treated to an N.H.L. game at Maple Leaf Gardens and a civic reception in town.

They leave for home, Jan. 20.

## Achtung!

STOUFFVILLE — Whitchurch-Stouffville will host a Swiss team of 20 players and up to 80 parents and spectators, next January.

And while still three months away, the community is already entering into the spirit of international goodwill. So much so, that a course in conversational German has been introduced in the night school at S.D.S.S.

Fifteen participants are required, however, to make it practical.

Persons interested are asked to be at the school next Tuesday, at 8 p.m.



Before you spend money on a new car, think about where you and your new car will spend five months of each year.

In the snow. In the slush. In salt. In ice. In short, in the winter.

Long, cold Canadian winter. There's no getting around it.

And for a lot of Canadian new car owners, there'll be no getting around it.

Pictured above however, are two solutions to winter driving in this country.

Although in a way, they're both snowmobiles, you probably know the one on the left by a more

familiar name: The Volkswagen Beetle.

In its own unique way, the Beetle has easily made it through 21 Canadian winters.

For starters, it starts.

The VW's engine is air-cooled. Which means there's no radiator to freeze, no water to freeze, and of course, no anti-freeze. Interestingly, tests prove that at some point even anti-freeze can freeze. But air can't!

Moving right along, the VW's engine helps the VW move along in yet another way.

It helps to give you great traction that'll get you through snow, ice, mud and slush. Because while

closed in a watertight steel compartment!

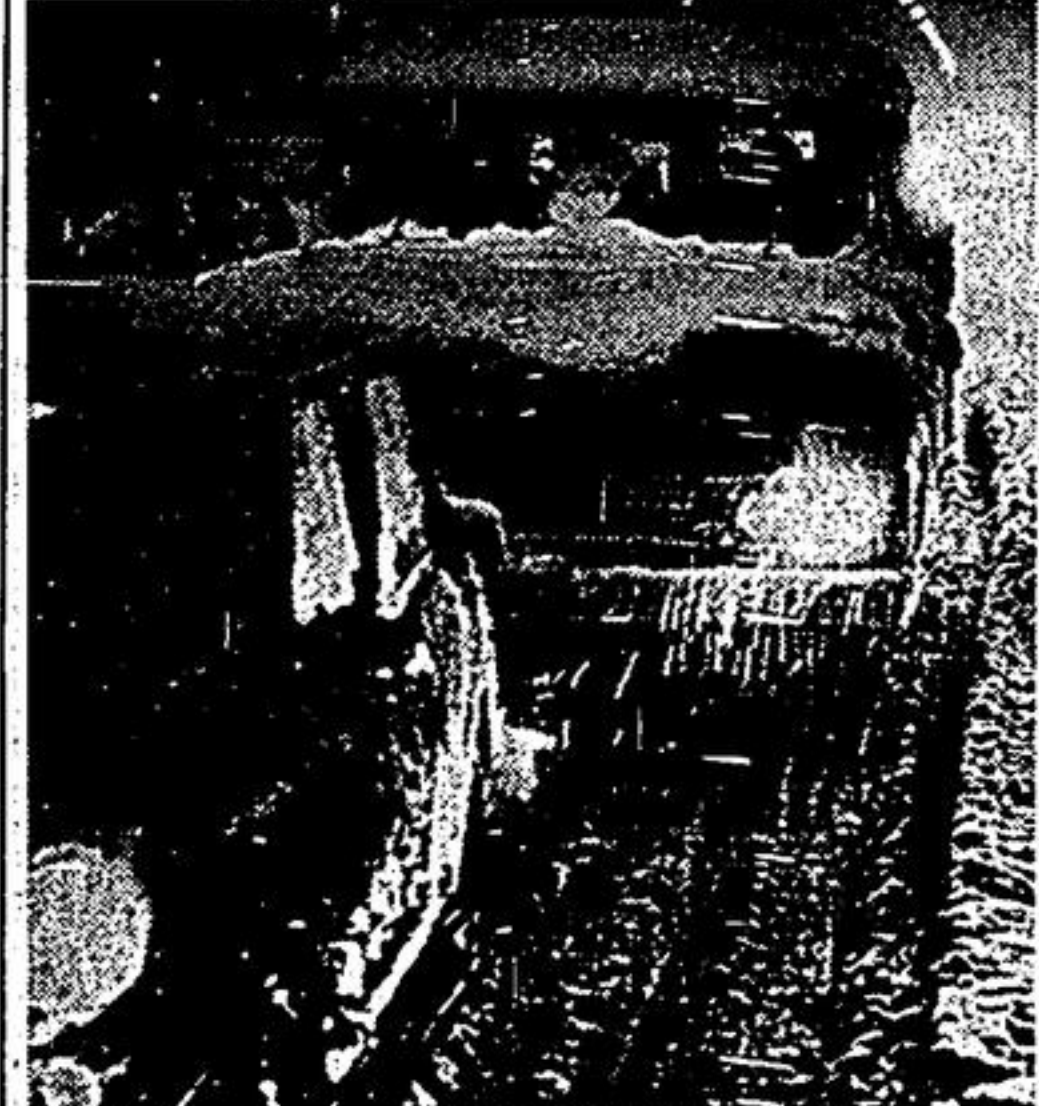
To make sure you stay nice and snug, the Beetle has a large capacity heater with thoughtfully placed warm air outlets.

The rear window has an electric defogger and de-icing system built in so you can always clearly see what's behind you. No matter how much it's snowing in front of you.

And because we build Volkswagens to make sure they'll go through many winters, the VW's warranty is longer than anybody else's except Rolls Royce. (24 months/24,000 miles.)

Last but not least, the snow-mobile on the left

**A solid sheet of steel seals the Beetle's bottom.**



Winter potholes are tough. But the Beetle is tougher.

**The Beetle's engine is in the back. It pushes you. You don't push it.**



most people are putting sandbags and cinder blocks in the back of their cars above the drive wheels, we put our whole engine in the back. Above the drive wheels. That way the drive wheels can do what they're supposed to do. Drive.

If the Beetle is beginning to look a little more



**The Beetle fights salt with 4 coats of paint.**

beautiful, its reassuring to know that its beauty is more than skin deep.

It's 4 coats of paint deep. Over 12 pound's worth. Underneath, a sheet of steel protects the VW's vital parts against snow, ice and salt. Nothing's exposed. The rods and cables for the gearshift, clutch, accelerator, handbrake and fuel line are snugly en-

does something else that is absolutely remarkable. After getting you through the worst of a Canadian winter, it'll then get you through the best of a Canadian spring, summer and fall.

**The Beetle's motor is air cooled. Air doesn't freeze. Water does.**



Few things in life work as well as a Volkswagen. Especially in winter.

**MARKHAM VOLKSWAGEN**  
**HWY. 7 MARKHAM 294-4141**

## Brunke's Blades

### HOCKEY SCHOOL

A non profit organization created to further the knowledge of hockey and encourage sportsmanship and co-operation.

**PROGRAM:** Power Skating \* Team Play

**TIME:** Saturday Mornings 6 - 7 a.m.

**COURSE A**

**OCT. 13 to NOV. 10**

- \* Open to Ages 6 to 12
- \* 5 hours ice time
- \* Make cheque payable to: BRUNKE'S BLADES HOCKEY SCHOOL
- \* Mail to: BOX 476 STOUFFVILLE
- \* For further information call 640-4295

CUT OUT AND MAIL TODAY — REGISTRATIONS LIMITED

COURSE A

NAME \_\_\_\_\_

ADDRESS \_\_\_\_\_

PHONE \_\_\_\_\_ AGE \_\_\_\_\_

The fee is \$10.00 per course, payable in advance. No refund after first day except under extreme circumstances, as determined by the executive of the B.B.H.S. The school and it's instructors will not be held responsible for any injuries or loss of property while the above named player is attending the school. Player will supply his own hockey equipment in accordance with O.M.H.A. standards. Registration will be confirmed.

Player Signature \_\_\_\_\_ Parent / Guardian Signature \_\_\_\_\_