

**Canadian Tire Store**  
Main St.  **Stouffville**  
Open Civic Holiday

# The Tribune

**Stouffville Midgets**  
vs. **Oak Ridges**  
Playoffs - Aug. 11

## Live fox in family pool

STOUFFVILLE — Mrs. Fred LeBlanc, 391 Loretta Crescent, was startled, Monday night, when she heard a splash and looked out to see a fox swimming in their above-ground pool.

The animal, she believes, had jumped up on the patio, then leaped into the water, a height of about twelve inches.

"It was making the strangest kind of noise," she said. It swam close to the sides of the pool, as if trying to get out. Mrs. LeBlanc said the fox carried a strong odor and authorities suspect it was rabid.

Neighbors 'fished' the animal out with nets. York Regional Police and the Humane Society were called.

## Welfare takes drop in York

YORK REGION — There were only 343 employable persons on welfare in the Region of York as of May, 1973, William Lazenby, Mayor of Richmond Hill, informed regional council, July 26.

Last year, at the same time, the figure stood at 642.

The break-down follows: Heads of families—83; dependents—223; singles—37.

Those classed as unemployable, total 934.

The total number of persons not working, in all classifications, and receiving welfare assistance is 1,372. In May of 1972, it was 1,932. This represents a reduction from 1.21 per cent down to .76.

## Wheat price uncertain

STOUFFVILLE—Wheat harvest is well underway on area farms, and while the moisture content has been quite low at about 13 per cent, the sample has been small.

The Co-op and Master Feeds are the two major buyers in this district.

The price delivered to the mill is \$1.50 per bushel, set by the Wheat Board. Two additional payments have been promised. Co-op Manager George Timbers told The Tribune, so this could amount to another fifty or sixty cents a bushel. "The problem right now is, the farmer doesn't know what he'll receive," he said.

Last year, the price per bushel at the mill was \$1.62.

## Teenage cyclist killed

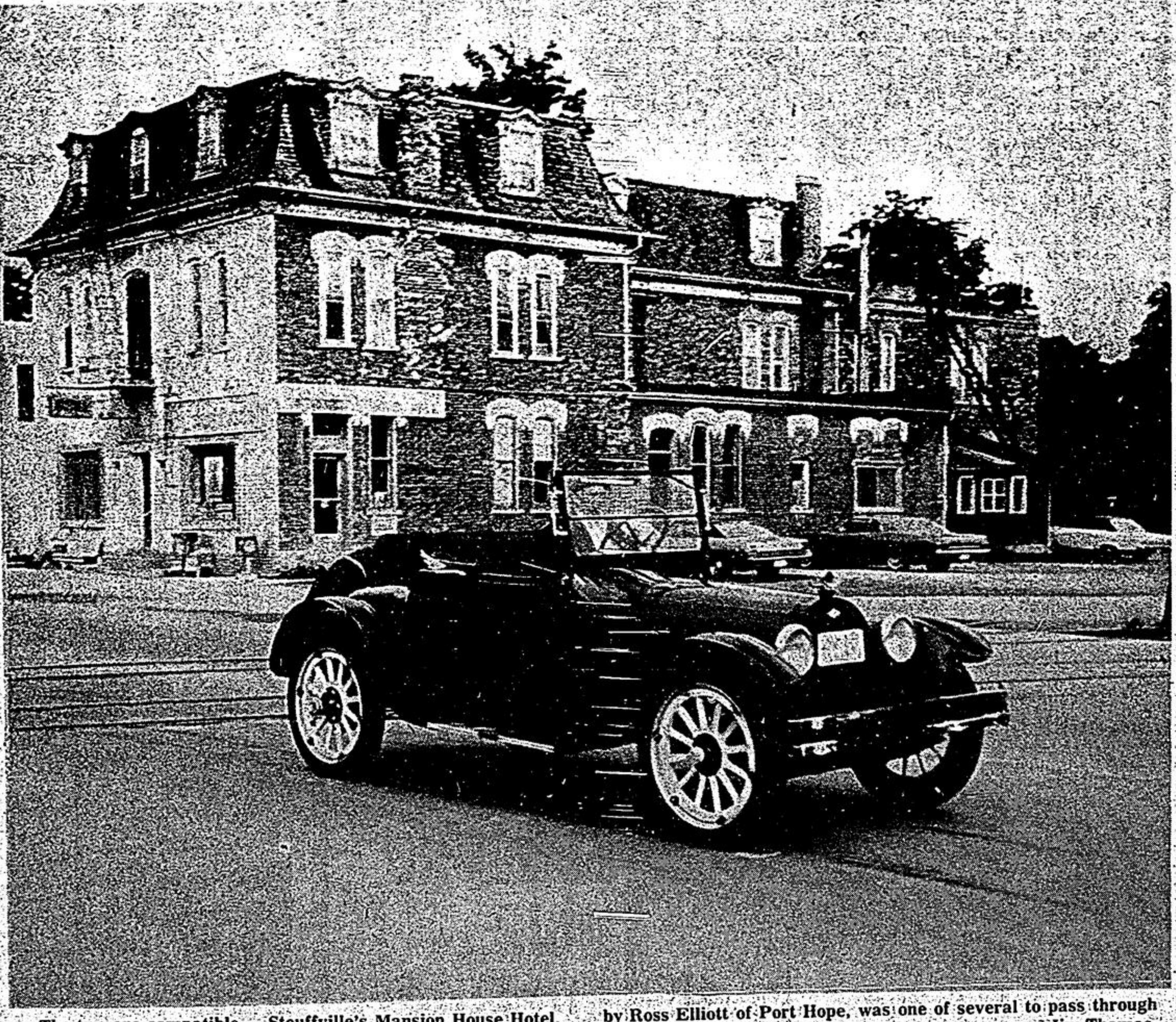
RINGWOOD — A young cyclist, thought to be about 16, was struck and killed, Monday night, while northbound on Hwy. 48, north of Ringwood.

The boy's belongings contained no identification and at press time, his name and residence were not known to Ontario Provincial Police.

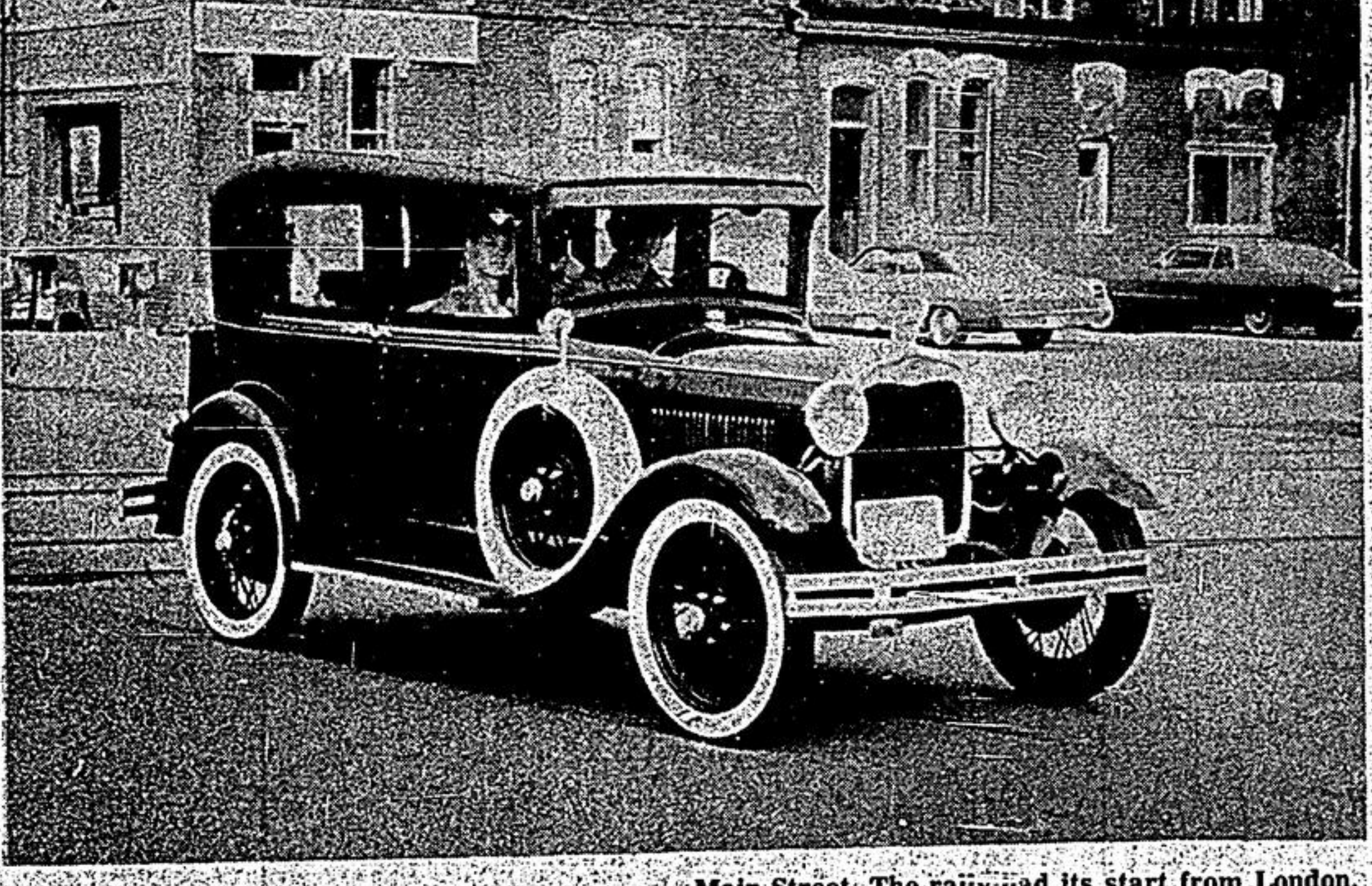
He is described as 5'6" in height, weighing 110 pounds; shoulder-length blond hair and wearing blue jeans. He was riding a white, 10-speed bicycle.

The motorist was Edward Wasiatka of Toronto.

NOTE: On Wednesday morning, the victim was learned to be Frank Troplano, age 13, of 73 Magnolia Ave. in Scarborough.



The two are compatible — Stouffville's Mansion House Hotel, and a 1920 McLaughlin Buick. The antique auto, owned and driven by Ross Elliott of Port Hope, was one of several to pass through town, Thursday, en route to Brighton, Ont. —Jim Thomas.



Douglas Chapman of Peterboro was at the wheel of this nifty 1929 Ford 4-door, eastbound on Main Street. The rainy had its start from London, Ont. —Jim Thomas.

## '73 Cadillac 'snubbed'

Port Hope, owner of the McLaughlin explained how drivers like to travel in groups so if one runs into any kind of mechanical trouble, the others can assist. Other participants included — Mr. and Mrs. M. H. Jeffery, Trenton; Lavern Chapman, Pontypool; Douglas Chapman and Bill Dunford, both of Peterboro and Roy Solmes, Springbrook, Ont.

As the antique autos moved east on Main Street, about a hundred yards apart, pedestrians stopped, what they were doing and stared.

Yet, parked in front of the Bakery was a '73 Cadillac. But no one gave it a glance.

## Town to host Swiss hockey club

STOUFFVILLE — Jan. 10, 1974, may seem like many months away. But for the host committee in charge of the Swiss hockey tour here, it's time to get the program lined up on paper.

The all-star Swiss club, plus a contingent of 80 supporters, will be in Ontario, 11 days. Two games will be played in the Stouffville Arena, Jan. 11 and 20, against a minor-midget team.

Other contests are scheduled for Campbellford, Jan. 13; Oak Ridges, Jan. 14; Port Perry, Jan. 16 and at the Oshweken Indian Reserve near Brantford, Jan. 18.

The visitors will attend a Toronto - St. Louis game at Maple Leaf Gardens, Jan. 12. Jan. 15 and 17 are open dates.

While in Stouffville, the Swiss boys will be billeted in

## Workman electrocuted Supervision criticized by inspector

STOUFFVILLE — A 21 year old apprentice electrician might be alive today if additional precautionary measures had been taken at the site of the Stouffville sewage disposal plant, Dennis Reed, Construction Safety Inspector for the Region of York, reported to Regional Council, July 26.

His recommendations were related to the death by electrocution, June 26, of Paul Wacker of Scarborough. The victim came in contact with a high voltage wire and plummeted 21 feet to the ground.

Mr. Reed stated that too much manual labor was expected from the project foreman, thus restricting him from making observations as is required by a person in that capacity.

The deceased was an employee of Aero Electric Limited of Weston.

The regional inspector noted further that, according to Gordon Brown of the P.U.C., if the apprentice had been wearing Hydro-approved gloves, he would definitely be alive today, and had he been working on a wooden ladder rather than an aluminum one, he would have suffered severe burns, but would have survived.

Paul Tanel, the project foreman, told how he observed Wacker on top of the pole "with sparks flashing all around him".

## Sold out!

STOUFFVILLE — Construction will begin soon, likely this month, on 96 homes in the Baycrest Subdivision, north of Stouffer Street.

But don't stampede to make a down payment. All 96 houses are reported sold.

## Sheep ravaged

STOUFFVILLE — Farm livestock, killed or injured by dogs in Whitchurch-Stouffville, has increased greatly this summer.

In a period of one month, the value has been placed at \$1,370.00.

Mayor Gordon Ratcliff in reporting the loss, said he was "very concerned" and expressed the hope the dog-owners would co-operate and keep their animals under control.

The ravaged stock includes both sheep and goats, and occurred in the Bethesda-Lemonville area.

## Lake lady killed in two-car crash

BALLANTRAE — One person died and four others were injured, in a tragic two-car crash, Sunday, at the intersection of Hwy. 48 and the Aurora Road in Ballantrae.

Lorraine Lee, 20, wife of Wayne Lee, R. R. 2, Stouffville, at Musselman's Lake, failed to respond to emergency treatment and died Monday night in hospital. She was a passenger in an eastbound auto driven by 23 year old Christine Harasiewicz of Toronto.

The second vehicle was driven by Maureen Hopper of Scarborough. Her passengers were Debbie Grensted, 15, of R. R. 2, Stouffville, and Alma Hoyer, 22, of Etobicoke.

## Little sign of army worm in Region

YORK REGION — While army worms are prevalent in many areas of the province, farms in the Region of York have so far escaped, Alan Wall, Agricultural Representative at Newmarket told The Tribune this week.

Mr. Wall said he had not personally inspected any fields in York, but had received no word or complaints from farmers. "You can be sure there are some around," he said.

Mr. Wall explained how the worm lays dormant during the daylight hours and 'works' at night.

## Fear rustlers active

STOUFFVILLE — Within recent weeks, The Tribune has published many advertisements related to lost or strayed cattle in the area.

Some owners fear, however, that the terms 'lost' and 'strayed' are over-simplifying a very serious problem. They feel 'rustled' would be more appropriate.

One Uxbridge farmer noted that with livestock grazing on rented pasture-land, sometimes far from any buildings, it is a simple matter to load up a truck without being observed, particularly at night. He said that several weeks could go by before the theft is discovered.

The current high price of beef is thought to be the reason. Police are suspicious that cattle-rustlers are active in Whitchurch-Stouffville, and Uxbridge, but are finding it difficult to apprehend the culprits. One officer observed that often several days elapse before the thefts are reported. Police are asking farmers and ranchers to keep a close count on their stock, even if it means a check of the herd every day.

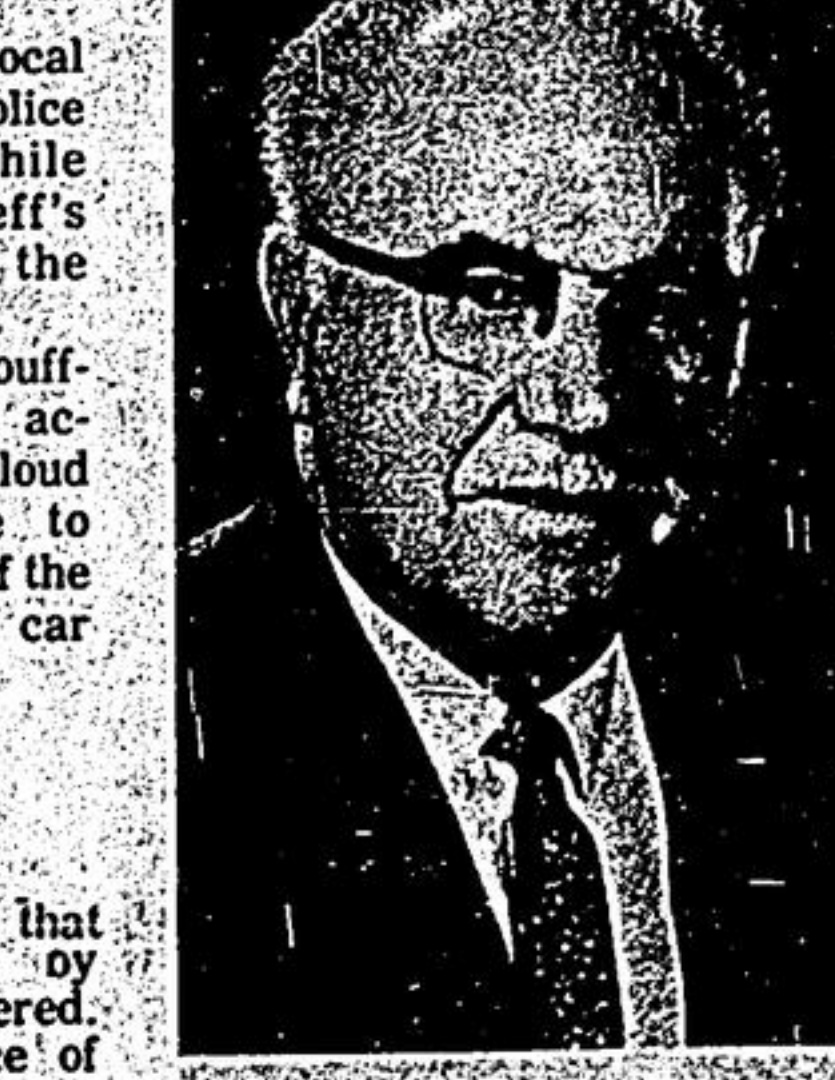
## Unique road plan

STOUFFVILLE — A unique road plan, that will eventually 'ring' the former village of Stouffville to the north and link up with Westlawn Crescent and Stouffer Street, is in its initial stage of construction.

Stouffer Street, now widened and curbed, will be joined by Hawthorne Avenue and Manitoba Street, with a new road, named Millard Avenue, extending north from Stouffer.

The present Stouffer Street will be extended south across Main, after two homes on the south side of Main, are removed. The street will veer to the west behind Summitview School and merge with Park Drive, south of the Arena.

Another road will likely swing east to the Tenth, but this will be part of a later plan. Another entrance onto Main, opposite the Presbyterian Church had been contemplated, but this has since been scrapped.



**To seek election**

George Harvie, R. R. 1, Goodwood, will seek election, Oct. 1, in the new Uxbridge Area, under regional government. Mr. Harvie announced his decision this week. He may let his name stand for a Ward post or a regional councillor at large.