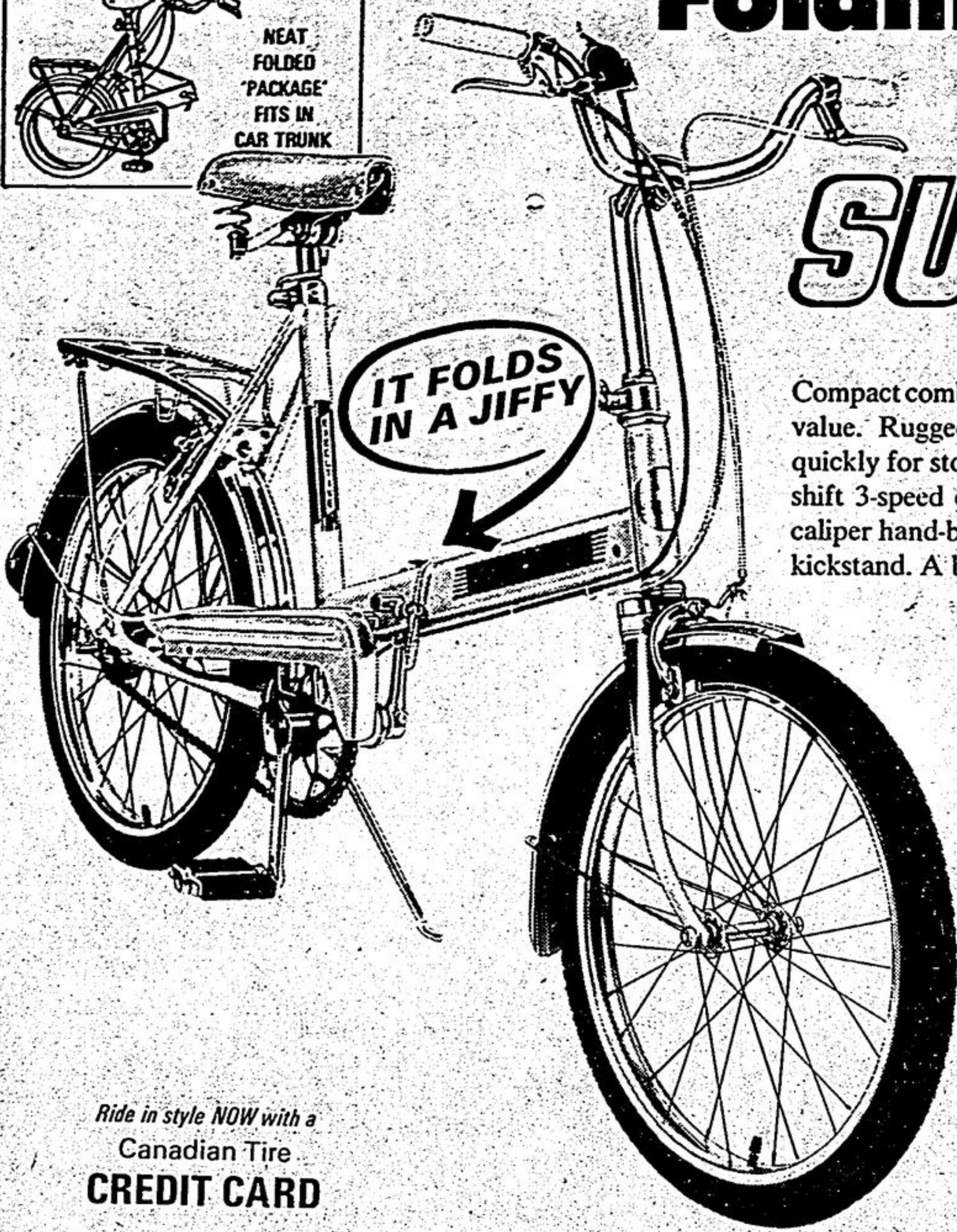


NEAT FOLDED 'PACKAGE' FITS IN CAR TRUNK



IT FOLDS IN A JIFFY

Folding 3-Speed AUTO-MINI SUPERCYCLE

Compact combo of craftsmanship and value. Rugged frame-hinge releases quickly for storing or travel. Trigger-shift 3-speed control; front and rear caliper hand-brakes. Rear carrier and kickstand. A buy!

58.50 COMPLETELY ASSEMBLED



Ride in style NOW with a Canadian Tire CREDIT CARD

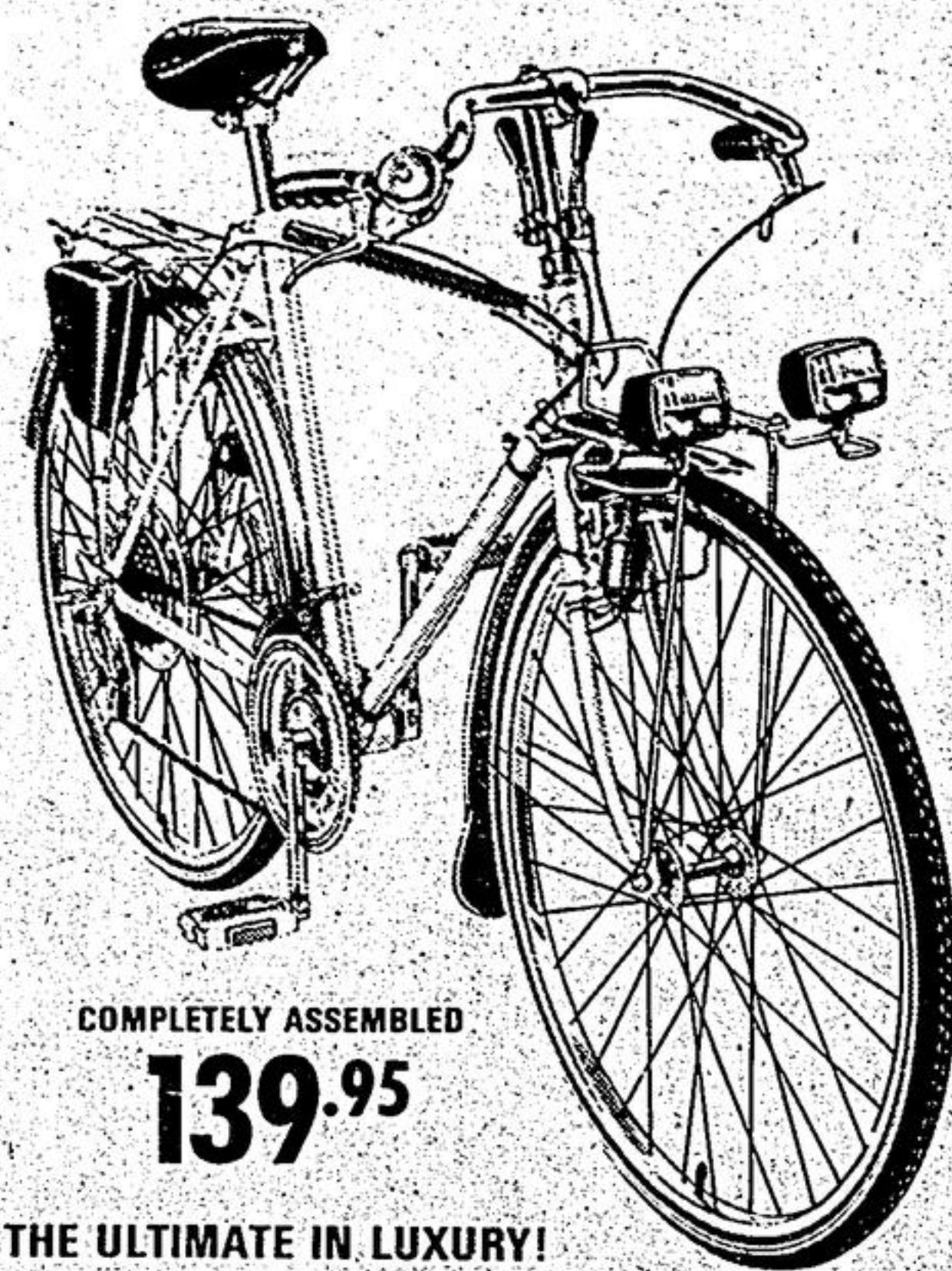


COMPLETELY ASSEMBLED **114.00**

Ladies' 10-Speed Tourer

Derailleur-type gearing gives this sleek French bike the versatility of a racer, but it's designed with the comfort of a regular touring bike. Easy riding spring saddle, touring handlebar, front and rear caliper brakes. Twin-tube sports frame in green. Chromed mudguards.

114.00



COMPLETELY ASSEMBLED

139.95

Men's 10-Speed Tourer

This luxurious SuperCycle has everything: 10-speed derailleur-type gears with shift-levers; caliper brakes; racing saddle; rat-trap reflector-pedals; chain-guard on sprocket; die-cast lightweight 21" frame. Plus extras: headlamps, generator, carrier, tool pouch, kickstand, bell, pump.

139.95



COMPLETELY ASSEMBLED **69.95**

MEN'S 3-SPEED RACER

Handsome British make with famed Sturmey-Archer hub, trigger shift, durable 21" frame, 26" wheels. Racing Handlebar, caliper brakes front and rear. Comfortable saddle, gold-tone frame, white trim.

Canadian-Made MEN'S or LADIES' 3-SPEED BIKES with 26 Wheels

COMPLETELY ASSEMBLED **68.95** Ea.



39.99 COMPLETELY ASSEMBLED

BOYS' or GIRL'S 'HI-RISER'

Economy and style are brightly linked in this 20" coaster-brake bike. Boy's in Blue Metallic, girl's in Gold. Chrome mudguard; 20 x 1.75 tires.

38.95 COMPLETELY ASSEMBLED

CONVERTIBLE for 4 to 6 yrs.

Nifty little whizzer with rubber tired rear balancers for small fry. Hi-rise details: saddle, sissy-bar, handlebars. 12 1/4" frame; 16" wheels.

'Safety Touches' and Handy Extras

<p>A. 'Fix Your Bicycle' REPAIR BOOK Easy to follow. 3.49</p>	<p>C. 8" BULB HORN Chromed; for Jr. or light wt. bikes. .98</p>	<p>E. HEAVY-DUTY 36" CHAIN LOCK Vinyl sleeve protects chain, bike finish. Laminated cylinder-type padlock. 3.98</p>	<p>F. EASY-TO-INSTALL TURN SIGNAL Attaches to 'Sissy Bar'. Activated by handle-bar controls. Less battery. 2.79</p>	<p>G. 2-TONE BULB HORN Rubber bulb with bright chromed rim and clear duo-note. .69</p> <p>H. LOUD CHIME BELL Crisp clear tone. Slick plate-finish. .79</p>
<p>B. TUBE REPAIR KIT Includes patches, cement, buffer. .47</p>	<p>D. LOUD BUGLE HORN Plated metal with live rubber bulb. 2.89</p>	<p>L. DE LUXE FRENCH GENERATOR SET Aluminum/plastic head-lamp. Parallel-action generator. With fork fittings. 3.98</p>	<p>M. FENDER-MOUNT REFLECTORS Easily-mounted oblong-shape 1 1/4" lens with bracket. 3/4" size lens. .33</p>	<p>N. CYCLOMETER Records up to 10,000 miles. For 20, 24, 26, 28" wheels. 2.49</p> <p>O. 'TURTLE' BIKE WAX Hard-shell shine! 7-oz aerosol can. 1.59</p>
<p>J. BATTERY-RUN SAFETY-ARM-LITE Adjustable-buckle web-strap; two 1 1/4" lens, clear front, red rear. 'C' cells extra. 1.59</p>	<p>K. COMBO HEADLAMP-GENERATOR SET Fork-mount style. High-output at low speeds. Chromed finish. 4.29</p>	<p>R. CUSTOM-MIRROR Black and chrome. 4 1/4 x 3 1/2" mirror. Economy Rear-view mirror. 1.69</p>	<p>T. BOOK CARRIER Rust-resistant galvanized wire for SuperCycles. Large size: 15 x 9 x 7 1/2". Ideal for schoolbooks. 1.69</p>	<p>U. REAR CARRIER Chromed tubular frame for rear mounting on regular-style bicycles. Good type for touring use. 2.89</p>
<p>P. REAR TOURING BAG Extra large waterproof black vinyl for rear mounting. Leather straps; 2 side-pockets for books etc. 4.49</p>	<p>Q. EASY-MOUNT BAG Large waterproof black vinyl with carrying handle; leather straps, pockets. For rear or front mount. 5.89</p>	<p>S. ROUND MIRROR 3 3/4" diam; fork-mount chrome fittings. 1.29</p>		

CANADIAN TIRE STOUFFVILLE

ASSOCIATE STORE

OPEN 9 A.M. - 9 P.M. DAILY 9 A.M. - 6 P.M. SATURDAY 640-5800



Self Service Gas Bar Open 24 hrs. 7 days a Week