

Flowers to enjoy in the wild

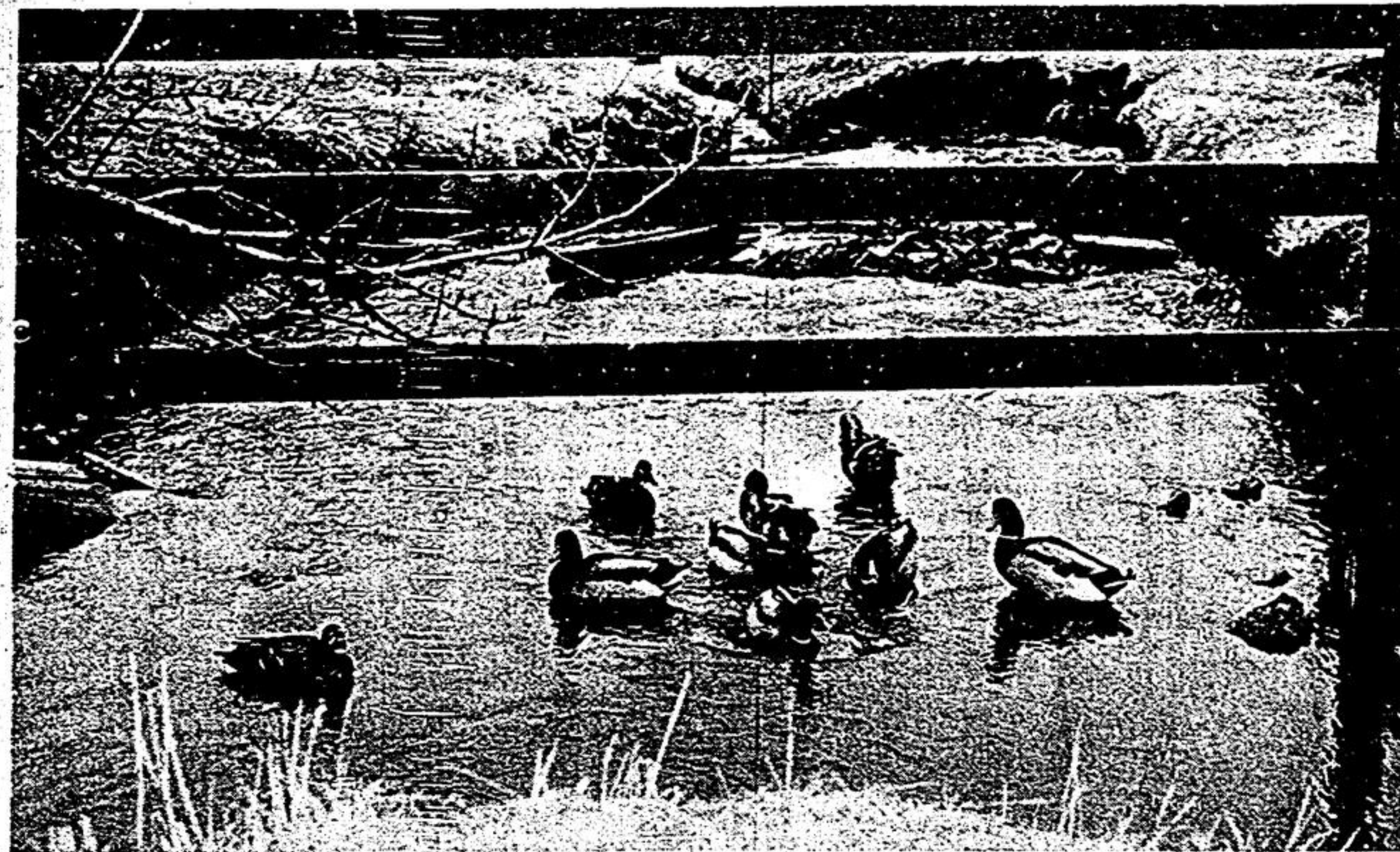
Not all of Ontario's beautiful flowers are produced in gardens. Woodlands and public parks will soon be touched with bright colors as the wild flowers begin to bloom. There is a wide range of wild flowers along roadsides and nature trails in Ontario, including bloodroot, columbine, wild ginger, lady's slipper, hepatica, bunchberry, and our provincial flower, the trillium.

of these flowers are destroyed each year by picking and land development. Some of the plants in the path of development can be saved by planting them in a wild-flower garden, says R.F. Gomme, horticultural specialist, Ontario Ministry of Agriculture and Food.

Conditions must be as close as possible to the natural habitat of the plant. Wild flowers require semi-shaded, moist, well-drained soils. Most wild flowers can be

transplanted either in the spring or fall. Trilliums can be moved almost anytime. Several nurseries sell potted wild flowers especially for the garden. More information on wild flowers can be obtained from these nurseries or from the many books available on the subject at local libraries.

If you are out for a walk on a bright spring day, remember not to pick the wild flowers. Leave them for others to enjoy.



It all started with two ducks on the property of Dr. and Mrs. L. Mendels, Bethesda Road, R.R. 4, Stouffville. Since then, the flock has grown, reaching almost 200 at one point.

Dr. Mendels feeds his 'feathered friends' all winter long, thus enticing them to stay.

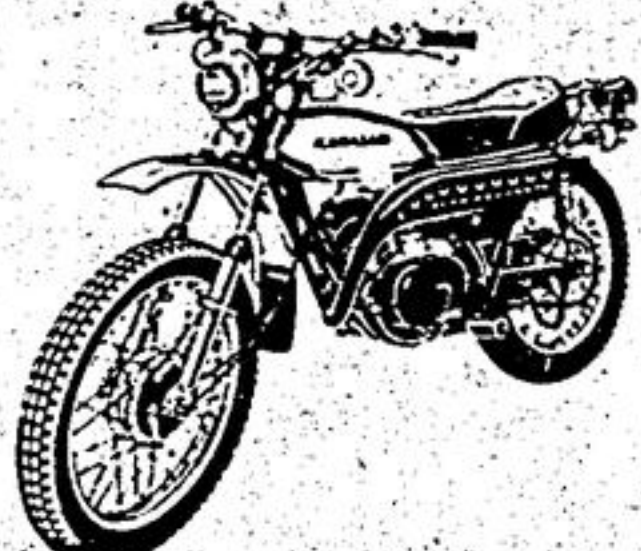
-Jim Thomas

Give'em a hard time.

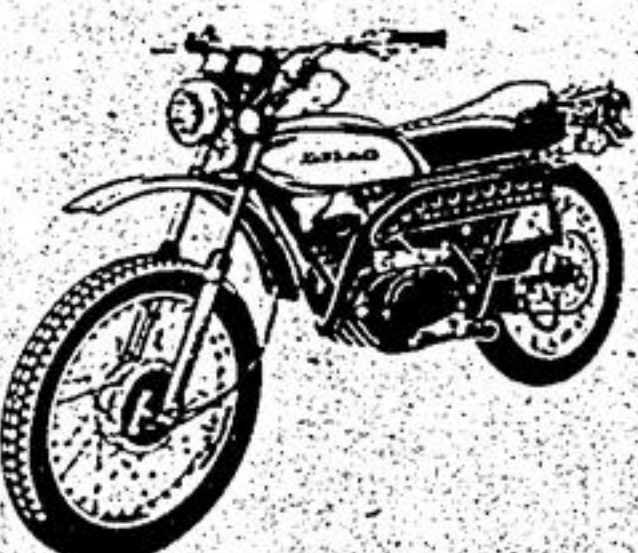
Want to go over the river and through the woods? Or through the river and over the rocks? Then climb on a Kawasaki enduro and give it a hard time. You'll come out ahead.



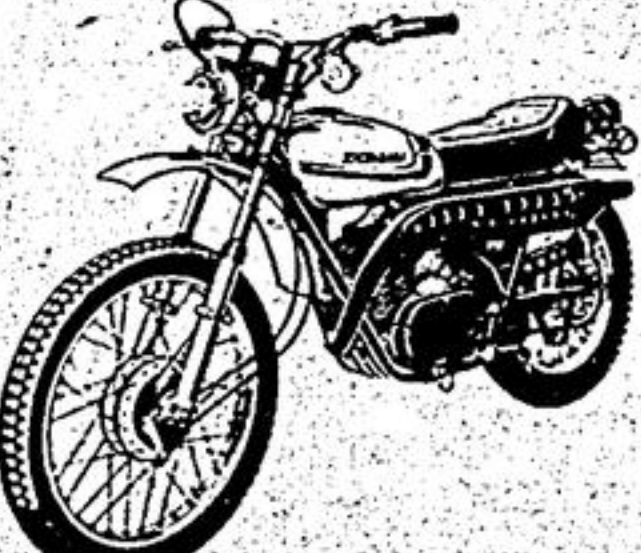
Kawasaki F-11 250cc Our newest enduro is designed to keep you off the streets. With high torque piston port engine.



Kawasaki F-7 175cc This lightweight is heavy on performance and durability. With dependable CDI (capacitor discharge ignition).



Kawasaki F-6 125cc Our lowest priced enduro is rich on torque and acceleration performance.



Kawasaki F-9 350cc If you've outgrown smaller enduros, step up to the F-9. And find out how good you really are.

Come out ahead on a Kawasaki.

STREET BIKES SALES+PARTS+SERVICE
PRICES INCLUDE TAX

R-A SPORTS

48 Hwy. (Behind Stouffville Trailer)

294-1411

Test gravel pit law in Uxbridge

UXBRIDGE TWP. - Uxbridge Township's bylaws, zoning and regulatory, relating to pit operations in the municipality, were put to the test a few weeks ago in Supreme Court action against Timber Bros.

In his report to Council, May 7, Alec McLennan the Township solicitor, said that the decision handed down by the judge favored the company because nothing had emerged to legally stop expansion of its quarried area at lot 3, conc. 6.

"The implication of the decision is that a pre-existing, nonconforming use has been found so Timbers can continue to mine and extend operations within the property boundaries. When regulations set down in the Pits and Quarries Act come into effect, Aug. 5, then they must comply with them along with the rest of the operators."

"Am I to understand that anyone who has operated a pit prior to the passing of our bylaw can mine to perimeter fences and nothing binds him to rehabilitate the area?" questioned Reeve Bob Nesbitt.

That, Mr. McLennan agreed, was the legal gist of the matter until provincial controls come into force. Pits established after 1968, he assured Council, were securely bound by provisions in the Township bylaw which had been basically upheld by the Supreme Court.

"You are never going to stop pit operations with zoning," he informed Council. "because decisions in the last two years have all said that gravel pits can be non-conforming." He recommended that the court decision be appealed, "however," on the grounds that there is no basis in law for applying non-conforming

use to a regulatory bylaw. "You have to decide if you want to adopt the regulations of the Pits and Quarries Act or if you want to enhance the province's standards and see if we can make them stick. Unless it's sorted out, anyone establishing his pit as a continuing conforming use is going to ignore the local bylaw."

Although the solicitor assured him that the provincial Act would take precedence over all legislation relating to the gravel industry, in August, and would require rehabilitation of pits, Reeve Nesbitt was extremely skeptical that anything would change regarding these non-conforming operations.

He voted, however, with other council members to launch an appeal against the Supreme Court decision.

LET HAHN LOOK AFTER YOUR LAWN

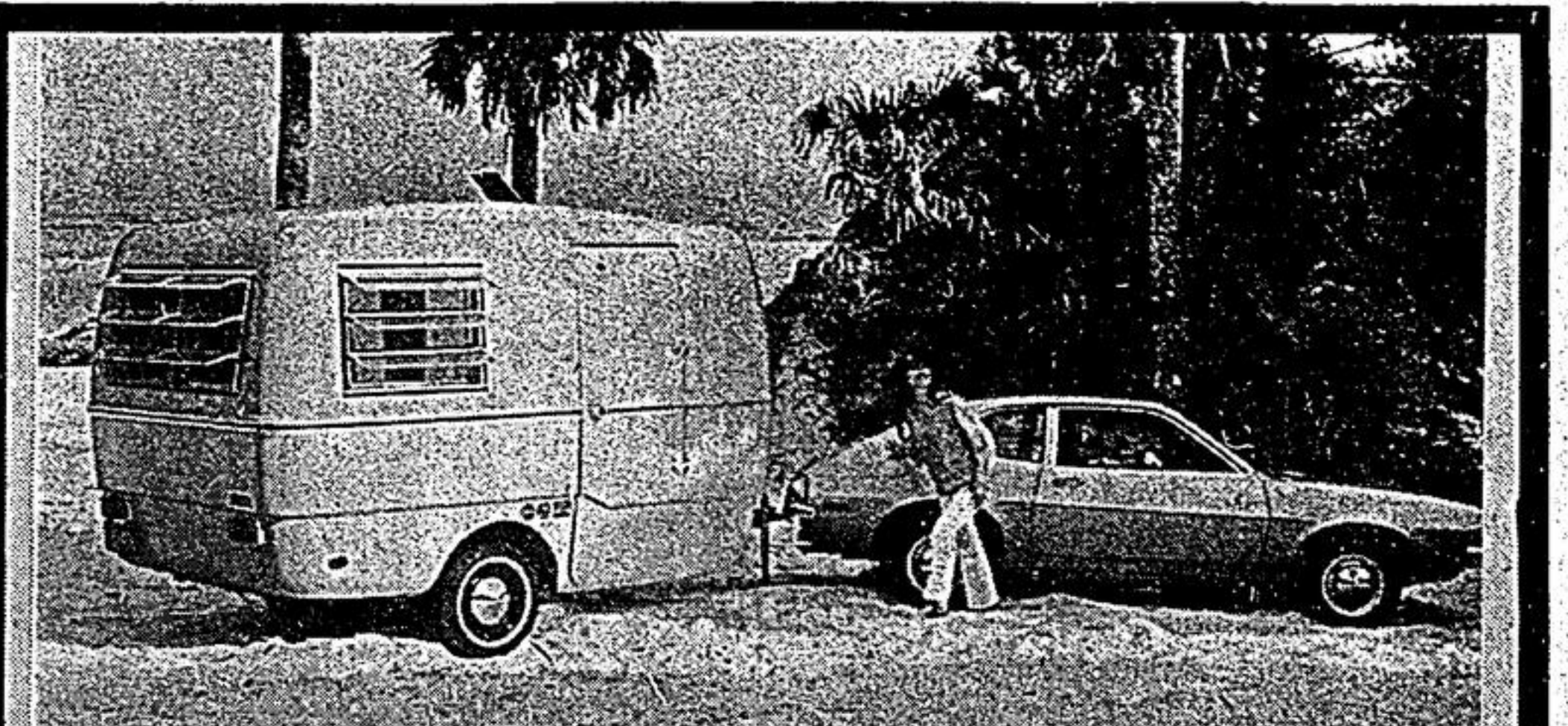


Tillers - Tractors

It Pays To Buy Where You Can Get

PARTS & SERVICE

BILL WALL SALES & SERVICE
Bethesda 888-1998



ideal for small cars
the lightweight Trillium...
successful with all cars

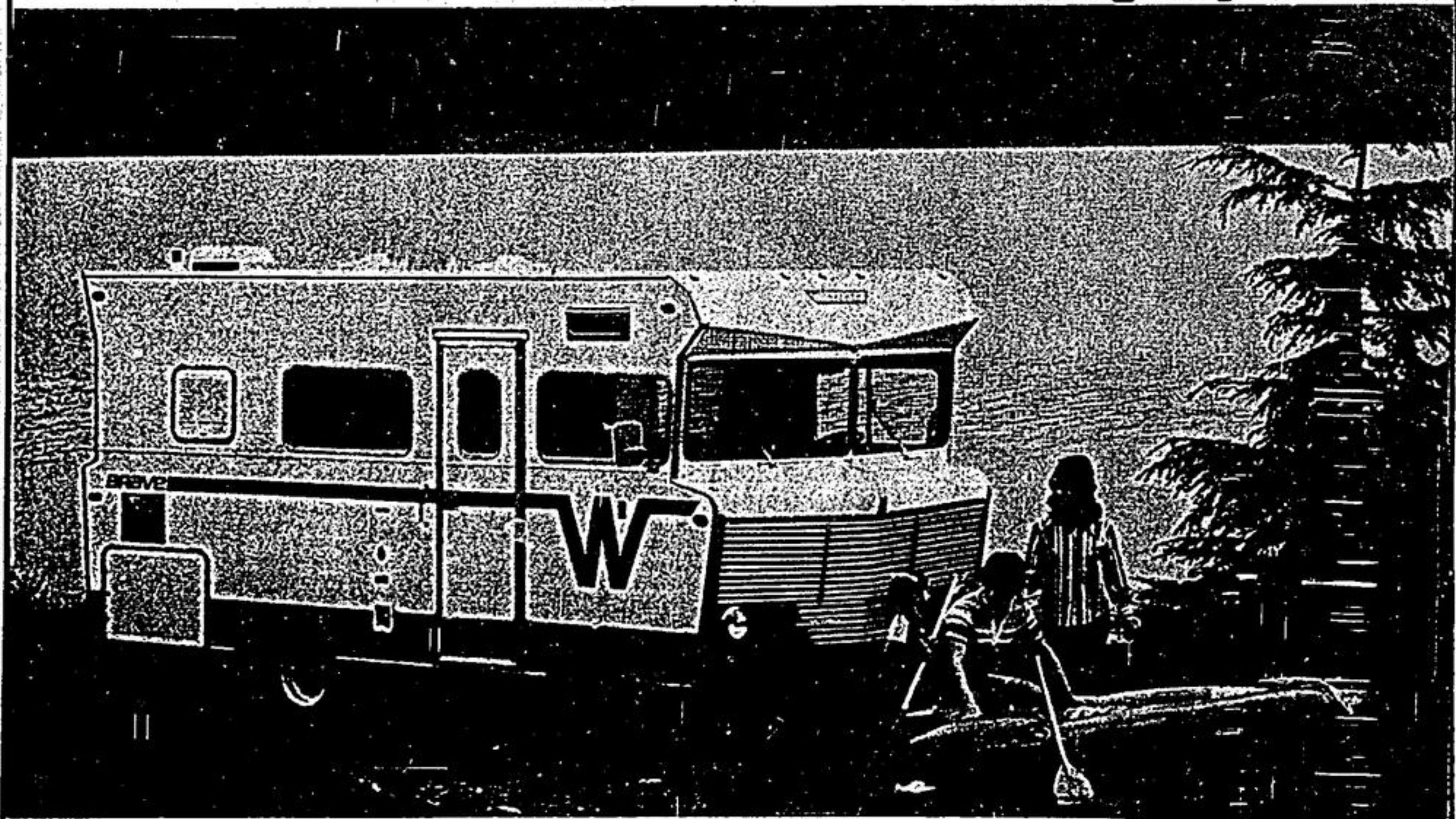


25 Heritage Road, Markham 294-4992 trillium industries

BRAVE... BECAUSE MORE VALUE MEANS MORE FUN!

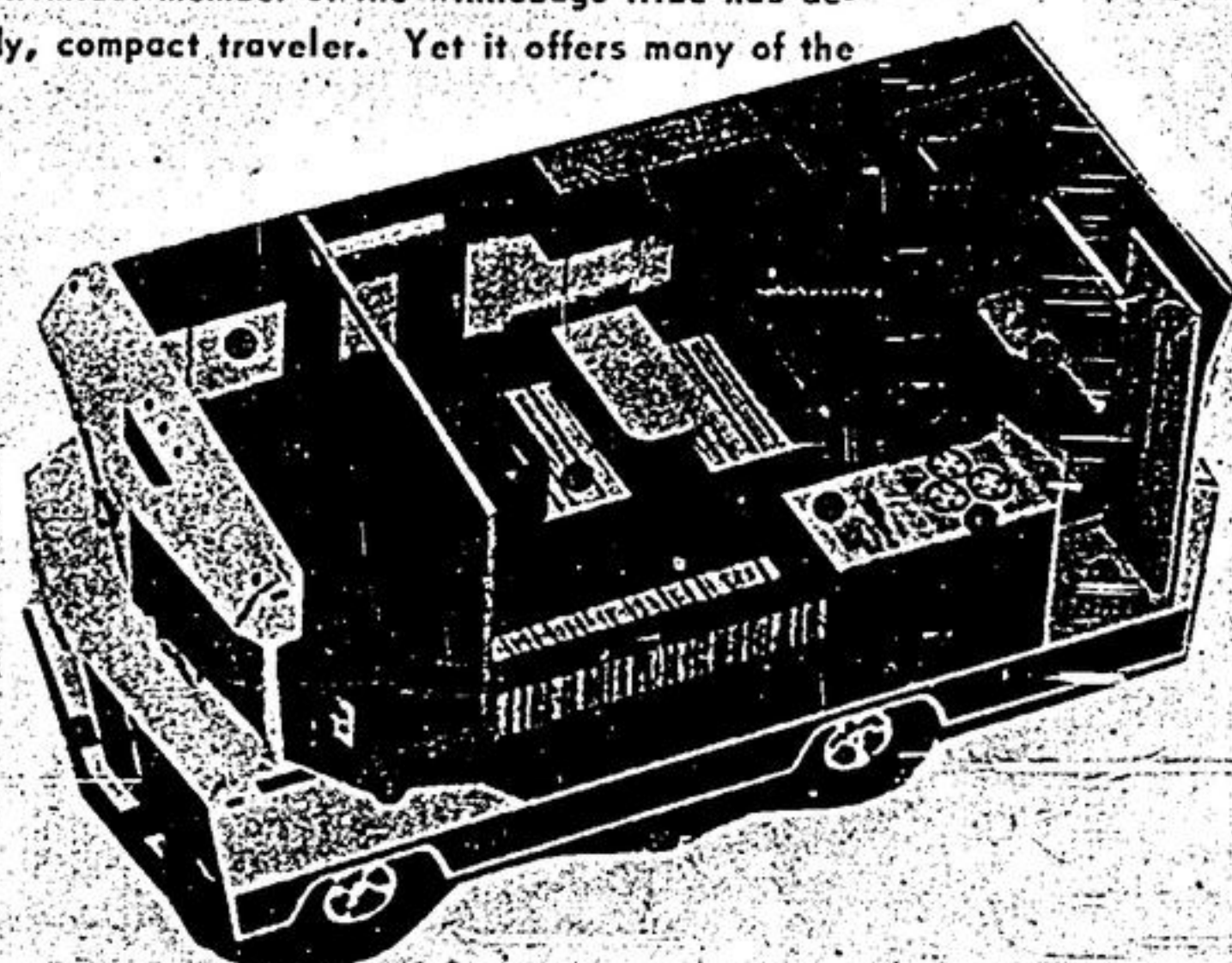
WINNEBAGO

We give you more.



For the young at heart from 16 to 60, the '73 Brave is a good buy for your money. Always a favorite with recreational vehicle buyers, this economical member of the Winnebago tribe has deservedly earned an enviable reputation as a sturdy, compact traveler. Yet it offers many of the same standard features as its larger cousins.

Markham Chrysler Dodge is proud to start the Winnebago line in Markham. The Brave exemplifies the style and ruggedness of the Winnebago line. Come in and we'll discuss the 27 new changes and other features in this great travel trailer.



MARKHAM CHRYSLER DODGE

Your Authorized Winnebago Dealer For Complete Sales and Service

HIGHWAY 7 AT LAIDLAW

MARKHAM

Telephone 294-4111 or 297-1652

DID YOU KNOW THAT WE CARRY...?

- ★ SLEEPING BLANKETS
- ★ BARBEQUES
- ★ FISHING EQUIPMENT
- ★ ELECTRIC BBQ STARTERS
- ★ CHAISE LOUNGES
- ★ GARDEN RAKES, HOES & SHOVELS
- ★ GARDEN INSECTICIDES
- ★ PATIO LIGHT SETS
- ★ PATIO TABLES
- ★ INSULATED PICNIC BAGS
- ★ WATER CARRIERS
- ★ HIBACHIS
- ★ GARDEN PLANTERS
- ★ CAMP AXES
- ★ LIFE JACKETS
- ★ TENT PEGS
- ★ AIRE MATTRESSES
- ★ HEDGE CLIPPERS
- ★ COLEMAN CAMP FUEL

If you haven't received a catalogue, please ask for one at the store.

CARD'S

DOMINION HARDWARE

Appliances

729 - 31 MAIN STREET, W. STOUFFVILLE 640-3622