

# GORD'S MARINE

Your **One-Stop-Shop**

- ★ **CARS:** Austin Marina, Triumphs, MG Sports Cars, Austin Mini
- ★ **ARIEN:** Lawn & Garden Equipment
- ★ **BOATS:** Grew, Stern Drives, Mirro-Craft, Spring Bok Aluminum Boats
- ★ **OUTBOARDS:** Mercury - 4 h.p. to 150 h.p.

SKI-DOO SALES & SERVICE  
Claremont 649-2007

# shrubs & trees

FOR MORE BEAUTIFUL GROUNDS

Now Available At Your

## STOUFFVILLE CO-OP

47 Edward St. 640-1550  
Stouffville

WE CAN'T TAKE THE CURVES OUT OF THE ROAD

**BUT WE CAN**

Check Your Front End Alignment And Wheel Balance (Cars & Trucks)

TUNE UP TIME IS ALSO HERE Don't Wait Till It's Too Late, Let Us Check Your Car When You're In

Phone Today for an Appointment

**NEIL PATRICK MOTORS LTD.**  
MAIN WEST - STOUFFVILLE - 640-3450

# What'll it be? A second-rate mower? Or a better-looking lawn?

Also front & rear engine riders. PRICES INCLUDE TAX

An ordinary mower will cut your grass. A Toro Whirlwind will help shape up your lawn. How? Toro's exclusive Wind-Tunnel action lifts all the grass to shear it smoothly and evenly. And there's an anti-scalp disc so you don't shave too close on embankments. Then, there's Toro's unique bagging system which packs away a bushel of clippings carefully and completely, with no spill. Maybe you can't afford a professional landscaper, but how about the next best thing?

**R-A SPORTS** **TORO**

48 Hwy (Behind Stouffville Trailer) 294-1411

## Bar commercial on 48 hwy. south

MARKHAM — "It's an attractive building, but there are no plans at this time for development along Hwy. 48 between

Steeles Avenue, and the old Town of Markham."

That was Planning Director Bill Power's answer to a request by Paul Carruthers Construction Limited to rezone a parcel of land from rural residential to rural industrial.

Mr. Carruthers built the house last fall on the west side of Hwy. 48 about 1/2 mile north of Steeles Avenue, and since then he has converted it into offices and operated his business from the premises.

Subsequently, the Town of Markham laid charges against the applicant for contravention of the bylaw.

"We have had no indication from the province as to the future of these lands," commented the planning director.

Mr. Power went on to say that to allow this person to operate a business under the existing bylaw, would mean having the neighbors coming before planning committee with similar requests.

"We don't want to allow commercial uses at this time before we have an overall plan for this area," he urged.

The Town of Markham had no objections to Paul Carruthers building this lovely home on Hwy. 48, north of Steeles. However, when he converted a portion of it into a business office, a charge was laid since the municipality claims it contravenes a zoning bylaw. —Michael Gerhardt.

### BOLENS MULCHER BAGGER

Ecological alternative to yard waste disposal.

Mulch a whole lawn full of leaves into a couple of bags of waste. Turn tree prunings, vines, lawn and garden clippings into reusable mulch. Condenses bulk by 90%. You wheel it to where the work is. Heavy duty 6 hp and compact 3 1/2 hp models disassemble into three units for quick clean-up. Bolens Division, FMC Corporation.

**A GOOD YARD AHEAD**

Reg. W. Perkin Ltd. Home Hardware 1/2 mile North of No. 7 on Kennedy Rd. Unionville 297-1771

Hamilton's Garage 54 Main Street Uxbridge 852-3151

### BOLENS NEW OT-16

Powerfully quiet. Quietly powerful.

Quiet enough to meet the growing life of anti-noise ordinances: Powerful, 16-horse, twin cylinder engine. Power locking collar, clicks attachments in line with fingertip pressure. Hydrostatic drive. Electric attachment clutch. Hydraulic attachment lift. Treadle-pedal controls speed and direction. This is the prototype for tomorrow's tractor. Ready today! Bolens Division, FMC Corporation.

**A GOOD YARD AHEAD**

Reg. W. Perkin Ltd. Home Hardware 1/2 mile North of No. 7 on Kennedy Rd. Unionville 297-1771

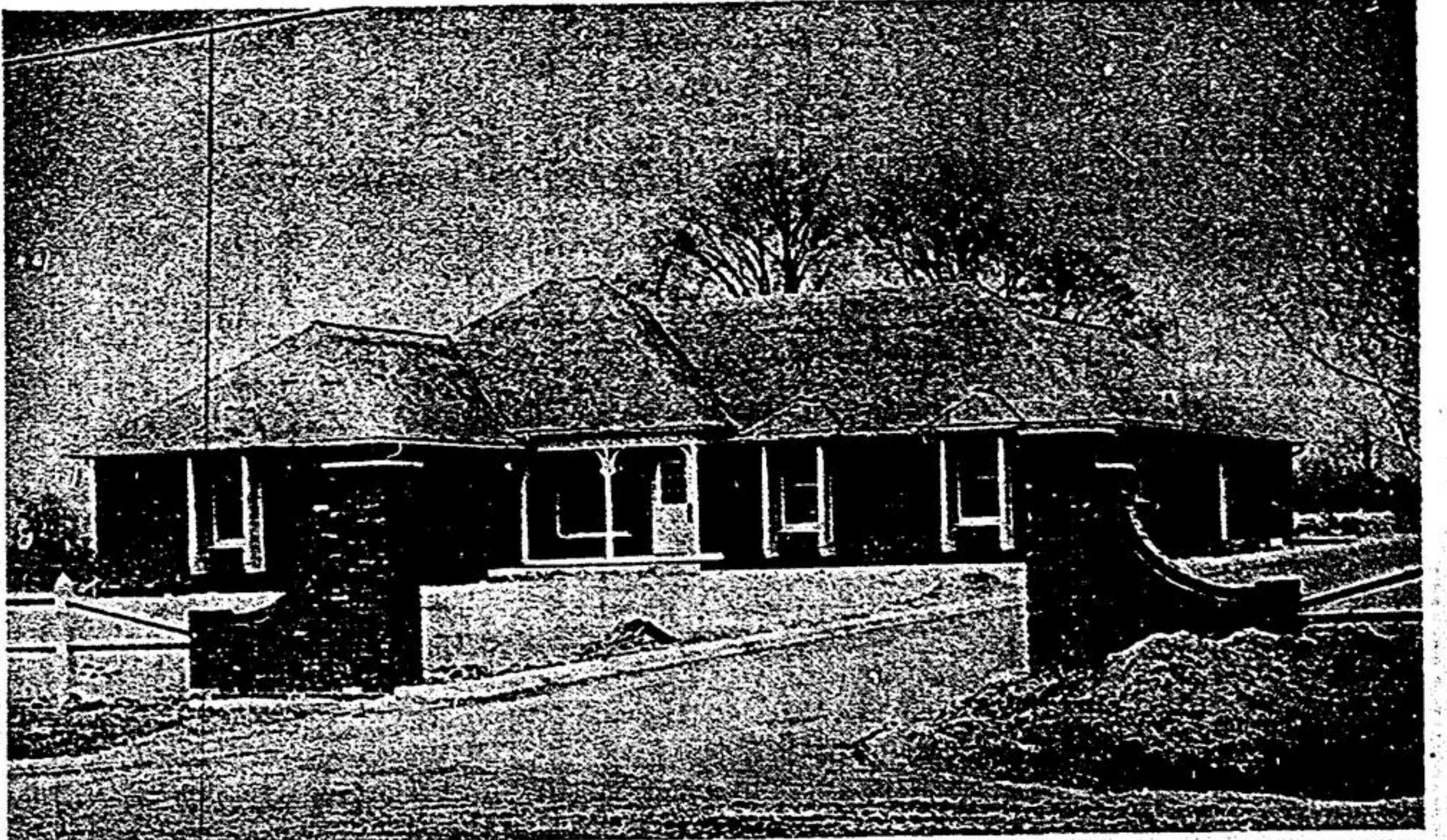
Hamilton's Garage 54 Main Street Uxbridge 852-3151

## Ariens Riding Lawn Mowers

### FAIRWAY

The Ariens Fairway Riding Mower is offered in four models, a 7 HP and a 5 HP, each with and without an electric starter. The Fairway is an overall smaller size version of the Emperor, yet it maintains most of the major Emperor style and design features. All-gear easy steering, separate brake and clutch pedals, no scalp 26" "Flex-N-Float-Plus" rotary mower, four forward speeds plus reverse are just a few of the Fairway features.

on display at **STOUFFVILLE SALES & SERVICE** **STOUFFVILLE 640-1814**



The Town of Markham had no objections to Paul Carruthers building this lovely home on Hwy. 48, north of Steeles. However, when he converted a portion of it into a business office, a charge was laid since the municipality claims it contravenes a zoning bylaw. —Michael Gerhardt.

## Soil important planting shrubs

Trees and shrubs are extremely rugged plants and can survive in almost any type of soil. However, if they are to produce strong, vigorous growth, they require a rich soil around the roots.

## To control crabgrass

There are two different types of crabgrass that can appear in your home lawn — a hairy and a smooth type. Both kinds are found where the turf is thin and where there is lots of sunlight. Cultural measures — such as mowing with the blades set high, adequate water and the use of fertilizer to improve the turf will do much to eliminate crabgrass, says John Hughes, horticultural specialist, Ontario Ministry of Agriculture and Food. However, other control methods may be necessary.

Action to control crabgrass should be taken early, since the crabgrass seedlings usually emerge by the middle of May. Chemicals such as Azak, Betasan and Tupersan, when applied early, will give good control. Crabgrass seedlings can be recognized by their broad, hairy, sharply-pointed leaves. Hand-weeding may eradicate many of them at this time. A late fall application of Betasan will also give excellent control.

## Massey Ferguson lawn/garden tractors and riding tractors.

More dependable in the lawn run!

We've got 'em all! MF 7, 8, 12, 14 h.p. lawn and garden tractors and 5 or 6 h.p. riding tractors! Cut from a 26" to a 48" swath, dependinn on size of machine and lawn! Quick starts, rugged construction, efficient operation get the job done fast. It takes less time to give you more time!



Consider the world's largest maker of tractors first

Prices start as low as **\$575<sup>00</sup>**

Ask about our big trade-in deals!

**PHONE 887-5886 297-2171**

**RUMBLE TRACTOR AND EQUIPMENT**  
MASSEY-FERGUSON DEALER  
Corner of Don Mills and Stouffville Roads Gormley, Ontario

## YOUR HOME - AWAY FROM HOME!



FULL LINE OF V.W. CAMP MOBILES ON DISPLAY NOW.  
24,000 Mile Warranty

**SPECIAL:**

**1973 WESPHALIA CAMPER**

White, fully equipped, featuring famous pop-up roof. Only gone 1,000 miles. Lic: DNY 945

**\$5,095**

SEE THEM NOW AT

**MARKHAM VOLKSWAGEN**

HIGHWAY 7 AT LAIDLAW MARKHAM 294-4141