

The Tribune

VOL. 85 NO. 49 WHITCHURCH-STOUFFVILLE-MARKHAM-UXBRIDGE, THURSDAY, MAY 3, 1973 32 PAGES 15 CENTS

Airport expropriations

Many home-owners angered by offers

Prices described as 'insult'

STOUFFVILLE - A tide of resentment over values set by the government on properties to be expropriated for Pickering airport, has swept through the site area, since price offers were released last week.

"The offer we got is an insult," one resident of R. R. 3, Stouffville, informed The Tribune. She believes she is echoing the feelings of many in the area, upset by the "1968 prices" submitted. "There is speculation here that, because the new Expropriation Act allows for negotiation, the government has deliberately set the offers low."

Complaints over discrepancies in prices set on comparable residential properties in the same vicinity have also been voiced. "It looks as if they put offers in a hat and pulled them out," commented one disgruntled citizen.

Fred Lewis, Uxbridge Twp. councillor and owner of Altona Feeds, castigated appraisers employed by the government for the discrepancies. "Their reports are so inaccurate it's at the point of being humorous" (His property, designated Commercial, ever since Uxbridge Twp. instituted zoning, has been classified Agricultural in the appraiser's report. Many of his constituents have expressed dissatisfaction,) he added. "After the 15 months of anxiety and suffering these people have gone through, you would think the government would present sensible values. Unless you relocate in South Slavia, there

is no way you could buy a comparable home for the money offered." Jack Anderson, a Pickering councillor, has

already made his move to protest the purchase price set on his home, east of Altona. "A group of residents here," he indicated, "have retained

Hilliard Chappell, an ex-parliamentarian, who was instrumental in drafting up the new Expropriation Act, and our own appraiser, Wallace Beaton."

Mr. Anderson was also critical of appraisal reports which, he believes, reveal appraisers worked to different sets of values. Residents, he commented, have been unable to fathom how "relocation" figures quoted had been assessed because, they too, seem to vary so drastically from property to property.

"I was offered \$42,700 for my 6 room house, double garage, 2 1/2 acres of land with stream, and \$2,100 to relocate, lock, stock and legal fees." He estimated 95 per cent of the property owners in his vicinity were "shocked and upset" by the offers. "The government has kept people in a state of anxiety for over a year and has a hell of a nerve to come up with such low offers."

Farmers, too, have expressed concern over purchase prices set on their holdings and over variances in value of land in the same areas. Some, however, believe adjustments will be made. "I don't feel the price offered is realistic, but it's only a preliminary offer," a 18th Ave. farmer commented optimistically.

Bob Dart, a real-estate representative with a home on 65 acres in the same area, bluntly stated that people were being asked to accept depressed market prices. "In 1969 I was offered \$3,500 an acre for my land. Now I'm offered \$2,400. I would give the government the property if it would relocate me somewhere else, in a stone house, in Markham. I'd even give them a bonus of 15 acres."

Advised, 'sign nothing'

PICKERING TWP. - "Sign nothing". This is the advice offered owners within the airport expropriation area, by Ontario Riding M.P., Norm Cafik.

"Sign no documents and accept no offers until I've had an opportunity to satisfy myself that you are being fairly treated," he directed.

Ronald Huck, Mr. Cafik's executive assistant said the local Member was "extremely upset" over values established on some properties. He has arranged a public meeting for the auditorium of Pickering Dist. High School, Friday, at 8 p.m.

"I'll fight with all my power to assure constituents affected by this expropriation, that justice will be done, and that they will

receive compensation to permit proper replacement value for properties," he concluded.

Farm land appraisals vary from \$1,600 per acre to \$2,400. Buildings are included, however, with no breakdown between the two.

Individual offers include, \$30,750 for the Mt. Zion Community Centre; \$29,000 for the Altona Community Centre; \$31,000 for the Missionary Church parsonage and \$68,000 for the Altona Missionary Church.

A public meeting was held Tuesday, at the Altona Centre, to discuss individual appraisals and rules under the Expropriation Act. One caller summed up the feelings of many when he said: "It's a mess."

Petition for library

STOUFFVILLE - A petition in favor of a new library in Whitchurch-Stouffville is presently being circulated in the municipality.

Introduced through the Library Development Committee, at a public meeting held St. Mark's School, April 25, it originated with the school staff which has already officially

announced its support of a new facility.

Mrs. Doris Lapp, the local librarian, who spoke at the meeting, congratulated the principal and staff on their civic-mindedness.

"It takes courage and commitment to go out on the limb and offer leadership for a community project."

Hot-air balloon — a traffic-stopper

Murderer is still at large

BETHESDA - Some time between 3 and 3:30 p.m., May 6, 1970, a man entered a neat, cottage-type residence of Mr. and Mrs. Albert Moorby, Bethesda Sideroad, Whitchurch-Stouffville, shot Mrs. Moorby twice in the back and several times in the head; then left by the front door.

That was three years ago. The murderer, as far as police files are concerned, is still at large.

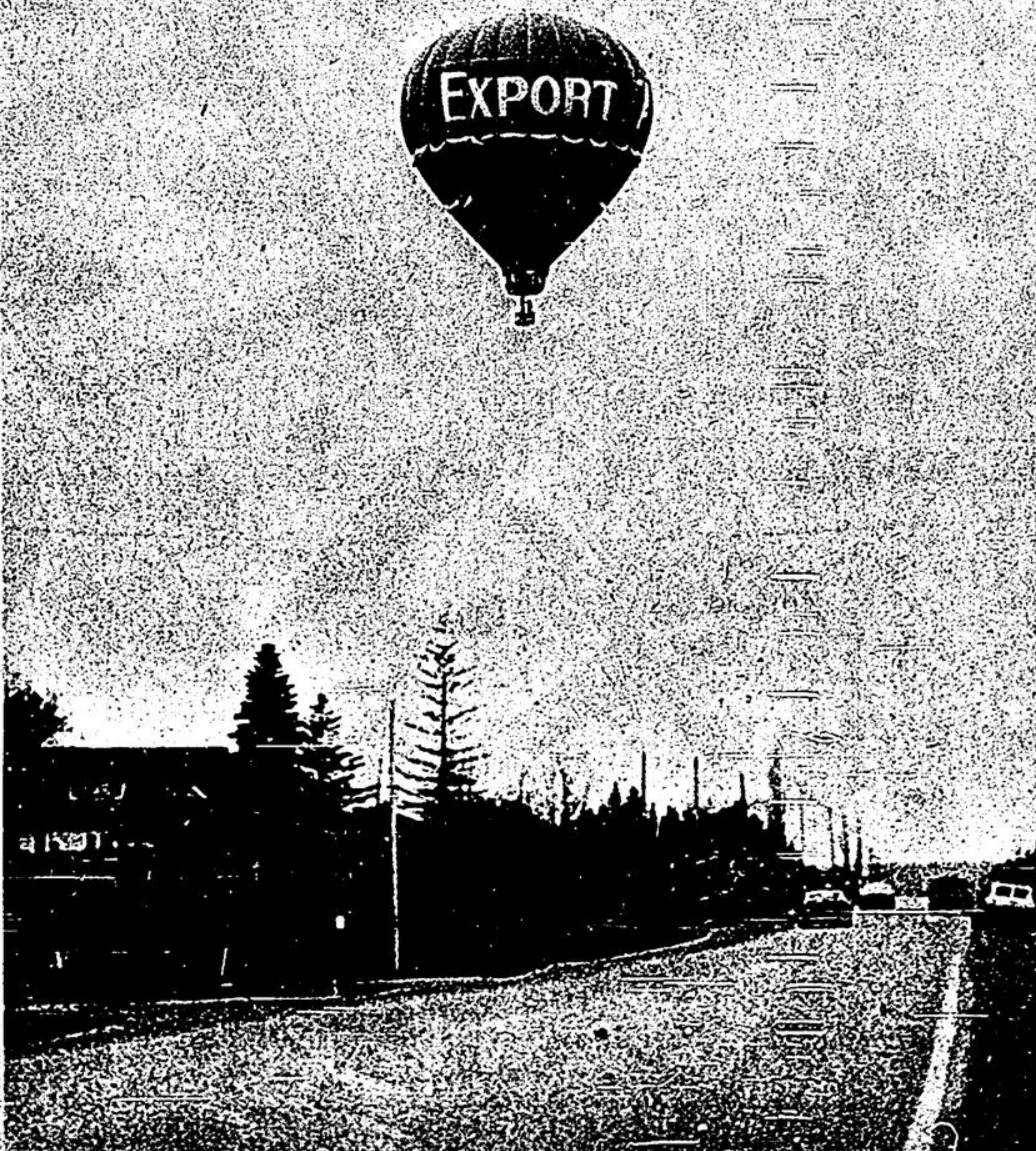
The victim's husband, a high school teacher, made the grim discovery when he returned home about 5:40 p.m. His wife was lying on the floor in a pool of blood. The couple's son, 21-month-old Brent, was pinned under her body, but not harmed. Mr. Moorby picked up the little lad and ran to a neighbor's where he called police. He then returned and applied mouth-to-mouth resuscitation until officers arrived.

An exhaustive investigation turned up few clues at the scene. No weapon was ever found.

Albert and Doreen Moorby had been living in their house on a rather secluded lot, six years. The location is midway between conc. 5 and the Don Mills Road.

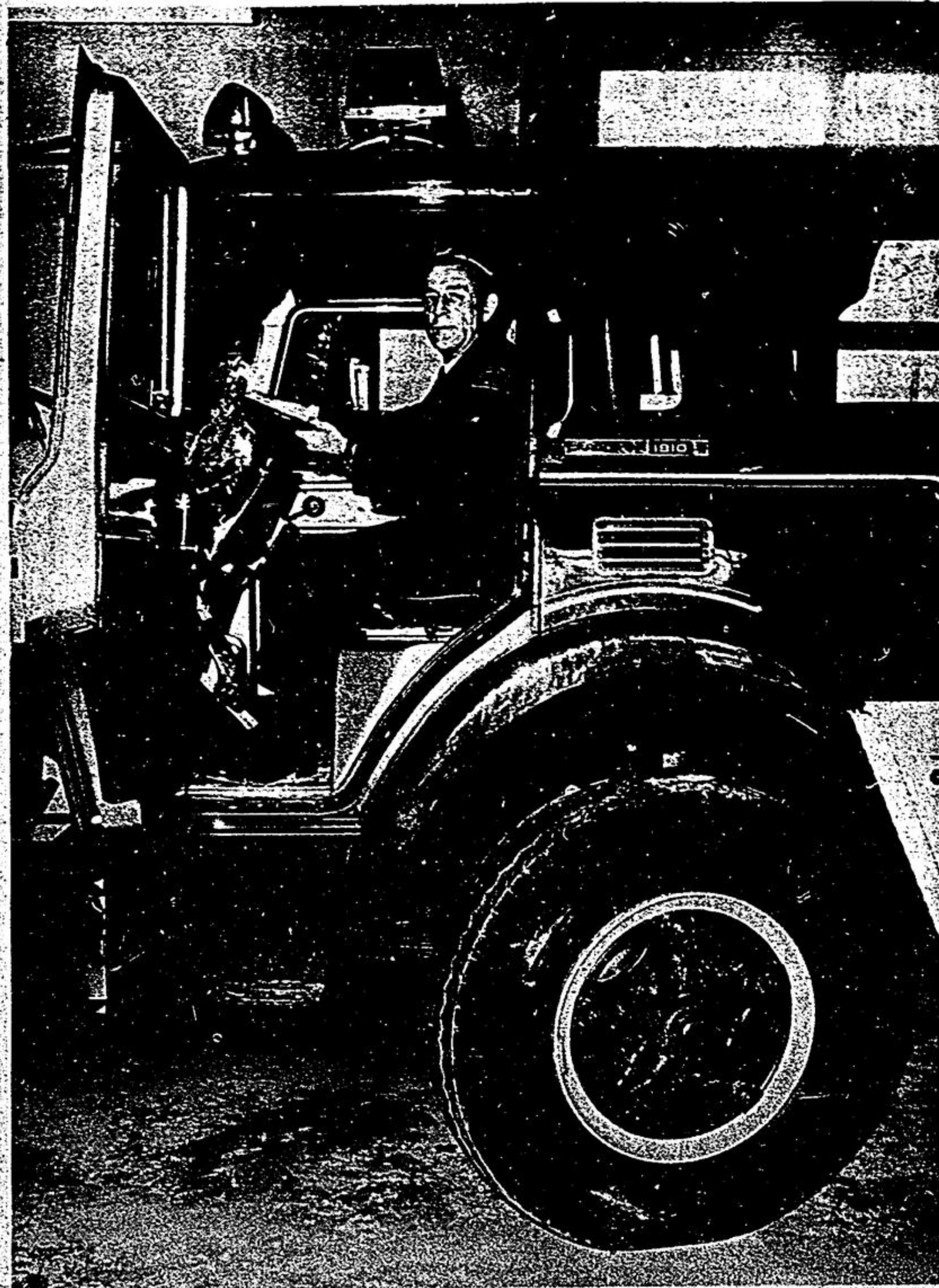
No motive was ever uncovered. There was no sign of a forced entry; no sign of a struggle; and no sign of a robbery.

A week later, a second woman, Mrs. Helen Ferguson of Palgrave was murdered under similar circumstances. An artist's sketch of the suspect was circulated across the Province; and a \$12,500 award offered; without success. Police are still certain the same person is responsible.



Early-morning risers were treated to a rare sight, Monday, when a huge helium balloon, carrying a pilot and lady passenger, floated

over Stouffville and landed east of Newmarket. The girl was later identified as Adrienne Clarkson of the C.B.C.'s "Take Thirty" show.



No trial runs yet for fire truck

The Town of Whitchurch-Stouffville has received delivery of a modern new pumper for the fire department. The 1973 model cab-over-engine International will occupy one of the bays

in the hall on Main Street, replacing the Fargo, used as a spare now for several years. Chief Walter Smith is shown at the wheel. —Jim Thomas

Ratepayers meet, May 9

STOUFFVILLE - A general meeting of the Whitchurch-Stouffville Ratepayers' Association, has been called for Wednesday, May 9, at 8:30 p.m., in the Centennial Centre, Ballantrae.

The agenda will include discussion on the constitution and the Town-authorized deer hunt.

Student presents petition

Town Council stalls on deer hunt issue

STOUFFVILLE - Public reaction to a 3-day deer hunt in Whitchurch-Stouffville, moved onto the Council agenda, April 24. The issue, however, was tabled for future consideration.

Leona Tranter, a Grade 7 student, currently spearheading a "Save our Deer" campaign, along with other students from St. Mark's School, Stouffville, presented the first returns from a petition, circulated throughout the municipality.

Leona told council members that 400 names had been collected, with 70 sheets still to be returned. The comparative ratio, she said, was 95 percent against the hunt, and 5 percent in favor.

"I hope Council will reconsider the issue with the true spirit of conservation at heart," she concluded.

Ward 2 councillor Jim Wong, who had voted in favor of

the hunt, wondered if anyone signing the petition had heard the Conservation Club's side of the story and the assertion "that the shoot was necessary to control deer population."

"I suggest," replied Leona, "there must be another answer."

Councillor Art Starr, Ward 1, enquired why similar concern had not been shown other forms of wild life. "As long as I can remember, we have sold licences to shoot pheasants. Do pheasants have no friends, just deer?" he asked.

At the same time, the councillor commended the girl on her concern and initiative.

Councillor Merlyn Baker, Ward 3, put forward a recommendation that the original motion of approval be rescinded.

This was quickly nullified by a proposal to table the issue for further discussion.

Gov't. approves 'waste' pipeline

STOUFFVILLE - A pipeline system recently installed by King Cole Duck Ltd., on their property, Lot 21, Conc. 4, has been inspected by the Industrial Wastes Branch of the Department of Environment, in response to concerns expressed by Whitchurch Conservation Club and municipal Council, over water pollution.

The system will utilize waste water from the duck processing operations at the company plant to irrigate a 10-acre sod farm.

The Ministry report indicates no water pollution problems are anticipated.

The sod, it points out, requires irrigation during dry periods only, not in winter or when saturated ground conditions prevail.

As flooding is not desirable for sod growth, the system must also be operated to provide optimum water flow.

Although the sod field is

adjacent to a swampy area, the Ministry considers the sandy nature of the soil will minimize the possibility of contaminated runoff.

Waste water irrigation is an experimental project by King Cole to determine if sod growth can be improved. If successful, it hopes to extend the system to other sod fields on its 200-acre property. However, there are watercourses and low spots throughout this acreage and the company has been informed that it will require official approval of the Industrial Wastes Branch to extend the present experiment.

The Ministry report concludes that the company is well aware of the agency's concern that contaminated wastes could reach a watercourse and that surveillance will be kept on the industry to ensure that purity in the headwaters of the Holland Valley River System is maintained.

Passengers 'crash-land' in farm field

STOUFFVILLE - "You may think I'm nuts," commented an excited early-morning caller, Monday, "but there's a big balloon, with two people aboard, soaring above Bruce Harper's barn, and heading towards Stouffville."

The party sounded sincere.

However, by the time newspaper editor Jim Thomas had hitched up his pants and laced on his shoes, the billowy green object was disappearing over the horizon. The location was estimated at somewhere north-west of Bethesda.

And the chase was on.

Fifty, sixty, seventy miles an hour, until contact (almost), was made on Don Mills Road, north of Vandorf. There, the balloon's flight path crossed the highway at right angles; dropping down to tree-top height, then rising quickly again, far from camera range.

The cat-and-mouse game continued to a point south of Davis Drive, where the 'basket' and its passengers came in for a 'crash-landing'. No one was injured; in fact, the pilot had planned it that way, although the impact was more severe than anticipated.

The operator and his lady passenger, 'took off' from Pickering, they said, about 6:30 a.m. Aside from a brush with the top of a cedar tree, the trip was uneventful.

Professional balloon flights, while uncommon in Canada, are popular in the U.S.