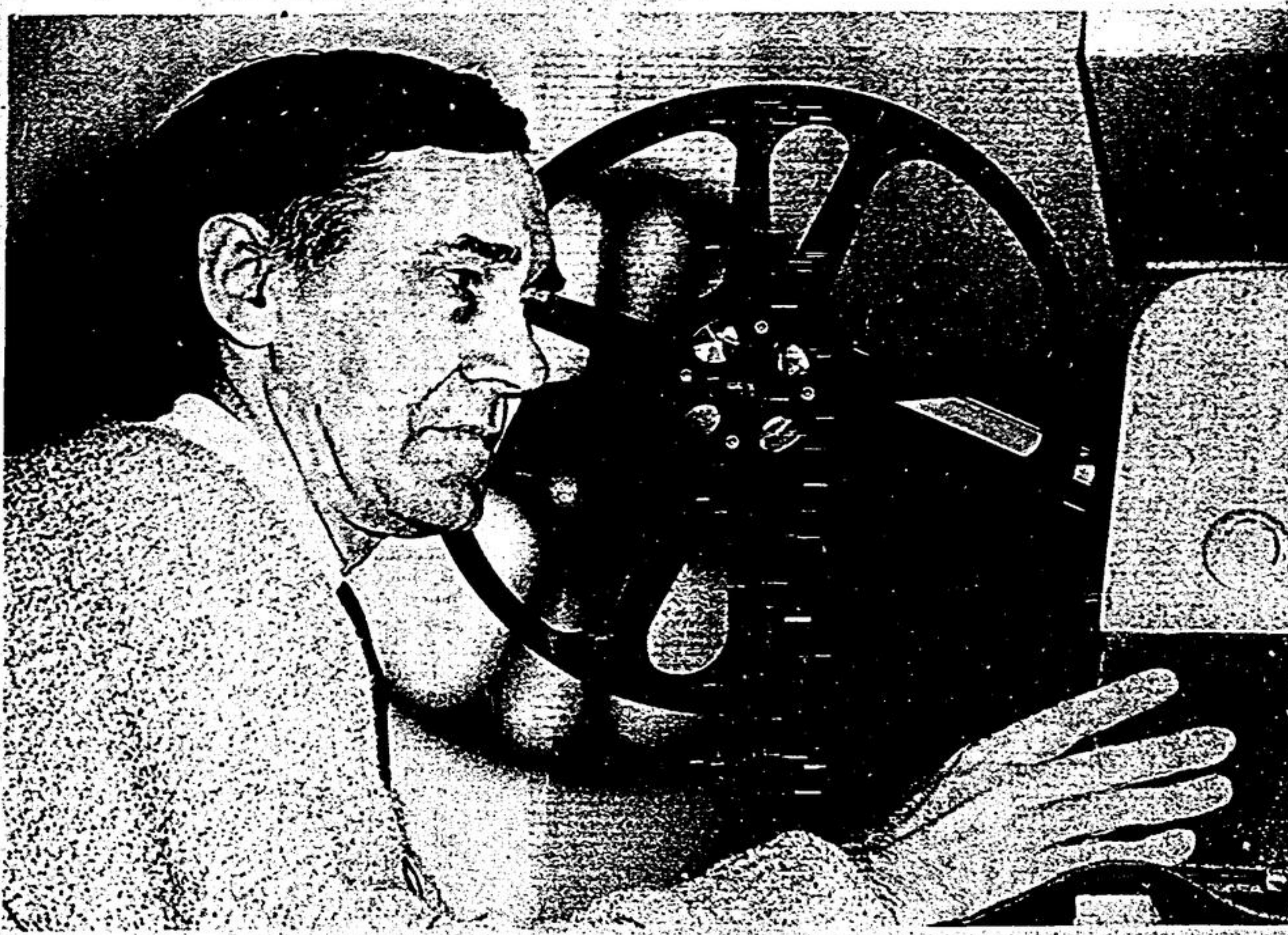


## Born at Midland

CLAREMONT — Their family, and surviving relatives are daughters, Helen Kollee, Donna (Mrs. H. V. Coleman) R.R. 3, Claremont for 6 years, passed away at Resthaven Nursing Home, Aurora, Jan. 16, after a lengthy illness.

Mrs. Rankin, 74, was born in Midland daughter of John and Annie Janleson. Service was conducted from O'Neill's Funeral Home, by Rev. James Carder.



Peter Croft, formerly of Hillsdale Drive, Musselman's Lake, and now of Claremont, hosts the Children's Theatre, every Saturday afternoon at 2.30 p.m., in Latham Hall, Stouffville. This week's feature is the "Three Worlds of Gulliver". Every adult paying the regular admission (\$1), allows one child in free. — Jim Thomas

## Theatre Arts Class

### Students display talents

STOUFFVILLE — Theatre Arts students of Grades 10, 11 and 12, Stouffville District Secondary School, will present three performances, including two comedies and a drama, Feb. 23 and 24 at 8 p.m.

The drama is entitled "Afterwards" with the following taking lead roles: Julie Bell, Maurice Hall, Steve Etherington and Wayne Newmarsh. The director is David Herbert.

Thornton Wilder's comedy "Childhood" is directed by Carol Farnik with a cast of students from Grade 10. The characters are played by — Kim Frampton, Doug White, Betsy Martin, Bev Miller and Martin Cudlip.

Washing Diaper, is directed by Milton Slaughter. Grade 11 student performers include — Dwayne Steckley, Dean Robertson, Rosanne Kamps, Denise Kamps, Kathy Richardson, Debbie Austin and Debbie Moore.

Adult admission is \$1.25; students, 75c; students with activity cards, 50c and 50c for children 12 and under.

Good Selection of used refrigerators and stoves have arrived at

### JOHN'S HIDEAWAY FURNITURE STORE

26 MAIN ST. N., MARKHAM  
294-3352

Beqorra... The **IRISH HOUSE** HOTEL

2 miles east of Jackson's Point, Lake Simcoe

Proudly presents ENTERTAINMENT

### "The Irish Rebels"

RECORDING ARTIST ALSO

## Don Sullivan

Wed. Thurs. Fri. Sat. 9 p.m. to 1 a.m.  
& Sat. Afternoon 3:30 to 5:30  
Sunday Dinner 12 noon to 10 p.m.

CALL US FOR FURTHER DETAILS

# 722-8102

Dining seven days a week  
L.C.B.O. RULES

## Saturday movies thrill children

By Kathleen Job  
STOUFFVILLE — How would you like to babysit between 150-200 youngsters for three hours every Saturday afternoon?

That is precisely what Peter Croft has been doing for the last four years. He operates the "Children's Theatre" at Latham Hall. He started out at the Centennial Centre, Ballantrae, then when Latham Hall was completed about nine months ago, he moved to Stouffville.

He rents the films from distributors. They are usually Walt Disney classics like "The Love Bug," "Treasure Island," "The Boatniks" and many others, all suitable for children. All the films are carefully screened at home before

hand by Mr. Croft and his wife. Most are comedies.

Peter Croft came to Canada from England six years ago. He and his wife and three small children recently moved from Musselman's Lake to Claremont. He is an independent film editor and producer. In England he worked on such shows as "The Saint," "The Guns of Navarone," "The Blue Max" and "Man of the World," also two children's shows, "Thunderbirds" and "X15."

He is currently co-producing a new documentary series for television with Rick Campbell, called "The Eye of the Beholder." He has written children's stories and for many years produced and acted in amateur

theatricals. In his spare time he builds model ships and planes which fly by remote control.

What motivates a man to give up every Saturday afternoon to provide entertainment for the children of this area? "There is no profit in it. I am lucky if I take in enough from admission to pay for the rent of the main feature let alone the cartoons. I am out of pocket most weeks," he admits.

He is often disheartened with the lack of enthusiasm shown by some parents. "If only some of them would spare a few minutes to come in and see what I'm doing. I believe a lot of people

think I'm showing home movies. My screen is actually a little larger than those in some movie houses. The kids are better behaved too. I give them a little pep-talk before we start and they are remarkably well behaved." He adds rather wistfully: "I wish one or two of the parents would offer to give me a hand occasionally, I would love to take an afternoon off once in awhile."

Why does he do it? I want to bring the very best films to kids, to a price (50c) that they can afford. I am sure there are many who would never get the chance to see films of this calibre if it wasn't for "The Children's Theatre," he concludes.

**CREST**

HARDWARE AND APPLIANCES

5 MAIN ST. W., STOUFFVILLE

**BROTHER**

RED TAG SPECIAL

Lightweight — zig zag and automatic stretch stitching.

Exclusive in Stouffville

# what forces us to make a rate increase at this time?

To begin with we would never consider a rate increase, unless there's no other way to operate efficiently and still provide you with first class service.

But like all other business today, we're faced with a situation of rising costs outside our control. The past few years have brought a large increase in the price of the many manufactured items and raw materials we purchase to keep your service at the highest level.

We're vitally concerned about costs. We're determined where possible to extract every ounce of value out of every dollar we receive in revenue.

If we can make a saving we do so, and pass it along to you by holding rates at their lowest possible point.

But our present rate increase has been forced upon us now by prevailing economic pressures. We don't like announcing a new rate any more than you like reading about it, but now we must.

And despite the increase our average residential customer will still only be paying 45¢ a day and we believe that this still makes electricity one of the biggest bargains in the family budget.

NEW NET MONTHLY RATES FOR RESIDENTIAL CUSTOMERS	
Effective on all bills issued on or after Apr. 1/73	
Kilowatthour (KWH) Consumption	Cost per KWH
First 50 KWH	4.2¢
Next 200 KWH	2.3
Next 500 KWH (for customers with hydro approved electric water heater)	1.0
All additional KWH	1.25

NEW NET MONTHLY RATES GENERAL SERVICE	
Effective on all bills issued on or after Apr. 1/73	
Monthly Consumption	Cost per KWH
First 50 KWH	4.2¢
Next 200 KWH	2.3
Next 9750 KWH	1.75
All additional KWH	0.65

## STOUFFVILLE PUBLIC UTILITIES COMMISSION

# How Sterling Trusts can help you beat the tax man and pile up \$100,000.



The secret? A Sterling Trusts Registered Retirement Savings Plan. The Government of Canada wants you to live well when you retire. So they allow you to deduct contributions to our Retirement Savings Plans from your taxable income. We pay you compound interest on the plan, and they don't tax that, either.

So if you contribute steadily, you can accumulate a nice little fortune. For example, let's say you're married with two children, you earn \$15,000 per year, and you can contribute \$1,000 per year.

Your plan will be worth well over \$100,000 in 35 years. (Based on current income tax rates and an interest rate of 6 1/2% compounded). You can contribute more—as much as \$4,000 a year or 20% of your salary, whichever is less—or you can contribute less. In fact, you can start a Sterling Trusts Retirement Savings plan for as little as \$100. And a Sterling Trusts Plan can often be coupled with an existing company pension plan.

You're eligible to save 1972 tax money until March 1st, 1973. Any contribution you make to a Sterling Trusts Registered Retirement Savings Plan by March 1st is deductible from your taxable income for 1972. That could put you in line for a good sized rebate in the Spring.

Don't let this opportunity slip by. Apply now. For full information either mail the coupon or call or visit one of our offices listed below.

Pension Department, The Sterling Trusts Corporation, 372 Bay Street, Toronto 1, Ontario.

Gentlemen:

Please send me an application form and full particulars of your Sterling Trusts Registered Retirement Savings Plans.

Name \_\_\_\_\_

Address \_\_\_\_\_

City/Town \_\_\_\_\_ Postal Code \_\_\_\_\_

Home Telephone \_\_\_\_\_ Business Telephone \_\_\_\_\_



## Sterling Trusts

Head Office: 372 Bay Street, Toronto 1, Ontario

Branch Offices: 347 Bay Street, Toronto 35 Dundas Street East, Barrie 73 Mississauga Street East, Oakville

Stouffville Representative: Birkett-Hassard Insurance Agency, 159 Main Street West, 640-2000