

# The Mayor reports

From the Town

## of Whitchurch-Stouffville

Each week, Gordon Ratcliff, Mayor of Whitchurch-Stouffville, discusses issues of current interest to ratepayers in the municipality. Residents wishing replies to particular problems, may contact the Mayor personally, or write "The Mayor," c/o The Tribune, Main St., Stouffville.

Question: What are the dates and times of Council and Planning meetings in 1973?

Answer: Council meetings will be held on the second and fourth of each month at 7 p.m. Planning Board meetings will be held on the first and third Tuesdays of each month, also at 7 p.m. The public is invited to attend. The inaugural meeting is Jan. 4 (tonight), at 7:30 p.m. Mayor Ratcliff will be in his office, two afternoons each week, from 1 to 3 p.m. Friday afternoon is definite, with the other to be arranged.

Question: Is it practical to build an artificial ice arena at Ballantrae? Answer: "I don't wish to throw cold water on any project, but I don't think the Ballantrae community is large enough to support a venture of this kind. Ice rinks are costly and somewhere along the line, someone must pay for them," said Mayor Ratcliff. "The mayor noted, however, that an arena could possibly serve the same purpose at considerable less cost."

Question: Is the construction of a second apartment on Albert St., Sunset Blvd., in Stouffville a 'dead issue'?

Answer: Mayor Ratcliff feels that 'delayed' rather than 'dead' would explain the future of a second apartment in the Albert Street-Sunset Blvd. area. He said that while the 1973 council could decide differently, it was his feeling that the approved increase in population should be accommodated in two separate subdivision developments.

**WOOD GUNDY**

Individual investment programs require sound advice and personal attention.

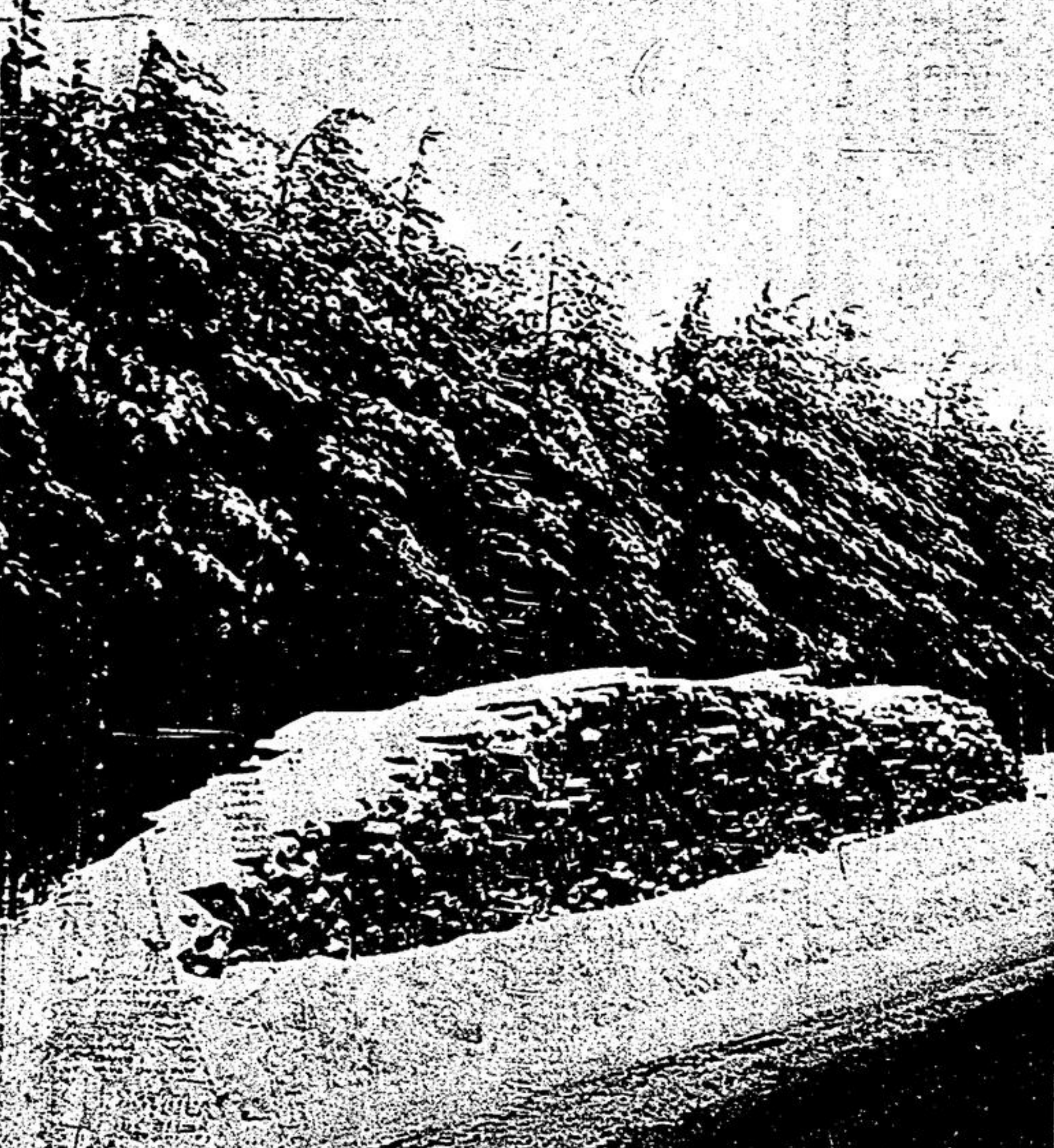
Wood Gundy offers a comprehensive investment service and we invite you to contact our authorized sub-agent:

**Russell Beare**  
261 Main Street, Markham  
Telephone 294-1523

Wood Gundy Limited

Investment Dealers Association  
Toronto, Montreal, Canadian  
and Vancouver Stock Exchanges  
New York and Midwest Stock  
Exchanges

Mr. Kent Winterstein spent Christmas at the home of Mr. and Mrs. Paul Baker, Loretta Crescent, Stouffville. Kent is in his fourth year at The Canadian Chiropractic College, Toronto. He is now enjoying a holiday visit with Mr. and Mrs. Ross Winterstein in Seminole, Florida.



## Vivian Forest in hibernation

While Vivian Forest stands quiet this time of year, as if 'asleep', large piles of wood, piled neatly throughout the area, indicates an activity that goes unseen. This particular location is on the north side of the Aurora Road, west of Ballantrae.

That goes unseen. This particular location is on the north side of the Aurora Road, west of Ballantrae. —Jim Thomas.

## "Finest staff"

STOUFFVILLE — Mayor Ken Laushway cleaned out his office desk and said goodbye Friday to municipal employees, as they prepared to head out for the holiday weekend and into a new year.

While Mr. Laushway retains the mayor's post until the inaugural meeting, Jan. 4, his duties are limited.

"It's not what one receives, but what one is able to give, that provides him with the most satisfaction," he told the year-end meeting, Dec. 28.

Speaking personally to Mayor-elect Gordon Ratcliff, he observed that his work in the two years ahead would be totally changed to what he had known previously.

"But, you will be aided by one of the finest staffs anywhere," he said. With direct reference to the Clerk, Ralph Corner, Mr. Laushway noted how he had assisted him on many occasions. "Everything will carry on just as well, if not better," he concluded.

**TORWON**  
HOME CENTRE  
1 Laidlaw Blvd. — Markham

★ BROADLOOM  
★ VINYL CUSHION FLOOR  
★ CERAMICS ★ DRAPERIES  
★ FLOOR TILES ★ WALLPAPER

For FREE Estimates & Complete Installation  
CALL 294-4888 or 297-1254

Open Daily 9 to 6 — Thurs. & Fri. 9 to 9

**SONY Sweet 17**  
TRINITRON COLOR TV

How sweet it is! 17 inches (measured diagonally) of sharp, true-to-life color image possible by SONY TRINITRON's one BIG gun system. The all solid-state KV-1710 is packed with features like Pushbutton Automatic Color and Fine Tuning Control, instant picture and sound, lighted dial indicators. Sharper corners on the 17-inch screen plus a front-mounted speaker make the SONY KV-1710 a real joy to use. Contemporary walnut grain finished cabinet with gleaming brushed chrome.

**Stiphout's T.V. Sales & Service**

Immediate order to all makes of T.V. — Phone 629-2515 — 5412 Brock Rd., N. Clarendon

**NOW APPEARING**  
**GRAHAME HARRIS DUO**  
Jan. 9 — Feb. 3

ENTERTAINMENT TUES. THROUGH SAT. 9 P.M. TO 10 P.M.  
ALSO SUNDAYS 7 P.M. TO 10 P.M.  
Good Food — Reasonable Prices — Great Entertainment.  
Licensed by the L.C.B.O.

**SHERWOOD STEAK HOUSE AND TAVERN**

SHERWOOD PLAZA — MARKHAM — 297-2590



**THE JOLEE Philosopher**

THE MAN WHO THINKS MARRIAGE IS A FIFTY-FIFTY PROPOSITION, SURE DOESN'T UNDERSTAND FRACTIONS!

**NORMAN FRETZ MEATS**  
Custom Slaughtering — Freezer Orders  
RR 3 CLAREMONT  
640-3125  
Choice Cut Meats  
Thurs., Fri., Sat.

**GUARDIAN DRUGS** CLEARANCE & DISCOUNT SALE  
JAN. 3 — JAN. 13

**BAN SUPER DRY ANTI-PERSPIRANT**  
SPECIAL 9.4 oz. UNSCENTED ONLY — SUGG. LIST 1.87

**CHILDREN'S SEAMLESS LEOTARDS**  
SIZES: 1-3, 4-6, 7-9 & 10-11 IN ASSORTED COLOURS

**VASELINE BATH OIL**  
12 oz. ASSORTED SCENTS SUGG. LIST 2.99

**HANKSON DELUXE VAPOR & HUMIDIFIER**  
SUGG. LIST 9.95

**Dee-Te HEATING PAD**  
1 YEAR GUARANTEE  
WETPROOF CONSTRUCTION  
3 POSITION HEAT SWITCH  
4.99

**Dee-Te FAMILY HOT WATER BOTTLE**  
SUGG. LIST 2.39  
1.99

**Dee-Te THERMOMETERS**  
ORAL, BABY OR RECTAL  
SUGG. LIST 1.29  
99c

**Dee-Te REGULAR SHAMPOO**  
17 OZ. NORMAL OILY or DRY  
99c

**Dee-Te STAR BUTANE LIGHTER FUEL**  
8 OZ. WITH ADAPTERS TO FIT ALL BUTANE LIGHTERS  
SUGG. LIST 99c  
66c

**Dee-Te SWAN PINK LIQUID DETERGENT FOR DISHES**  
24 OZ. SUGG. LIST 59c  
39c

**GUARDIAN BRAND EVERYDAY MULTIPLE VITAMINS**  
PLAIN 100's PLUS IRON 100's  
1.79 1.98

Remember the old way of borrowing, when you had to have it to get it?

to Dominion, the kind of thinking has the "Bank" TD's "Cash-flow" way is the emphasis where it belongs. On the TD's cash flow, here's how it works:

figure out the money you'll have over the period of a year. And how you plan to spend during this period. The TD's cash flow loan is based on the difference between your income and your outgoing to the amount you can comfortably borrow. And that's really about all you need to know for a Cash-flow Loan. So if there's something you've been thinking about that requires more money than you have at the moment, talk to your TD Manager. He'll help you work out a Cash-flow Loan. That's Toronto. Dominion's new way to borrow. If it helps you live the way you want to live, we think it makes good sense.

**TORONTO DOMINION BANK**

**Cash-flow. The modern way to borrow.**

TD Manager, Stouffville Plaza, 387 Main Street West, Stouffville, Ontario.

**CALL ME**

I'll bring you ideas on "Money Back" Life Insurance, Sun Life Security Fund, Endowment protects your family until you are 65, then returns all premiums plus dividends!

**HEINZ U. DALES, C.L.U.**  
R.R. 3 Clarendon  
Telephone 640-0665

**SUN LIFE OF CANADA**

INDIVIDUALLY WE'LL GIVE YOU GREAT SERVICE — TOGETHER WE'LL GIVE YOU GREAT PRICES!

**Widdifield DRUG STORE**

OPEN MON. THRU SAT. 9 AM TO 9 PM. SUNDAY 10 AM TO 6 PM.  
Widdifield's — Stouffville West-End's Post Office