

Festive banquet successful event

By Lee Wong
BALLANTRAE - The 'Over 60 Club' of Whitchurch Centennial Centre held its annual Senior Citizens Christmas dinner, Dec. 11, and as in previous years, the event was a tremendous success. A capacity crowd of 130 guests attended to enjoy turkey and ham dinner, Christmas songs, and ecchre. Piano accompaniment for the

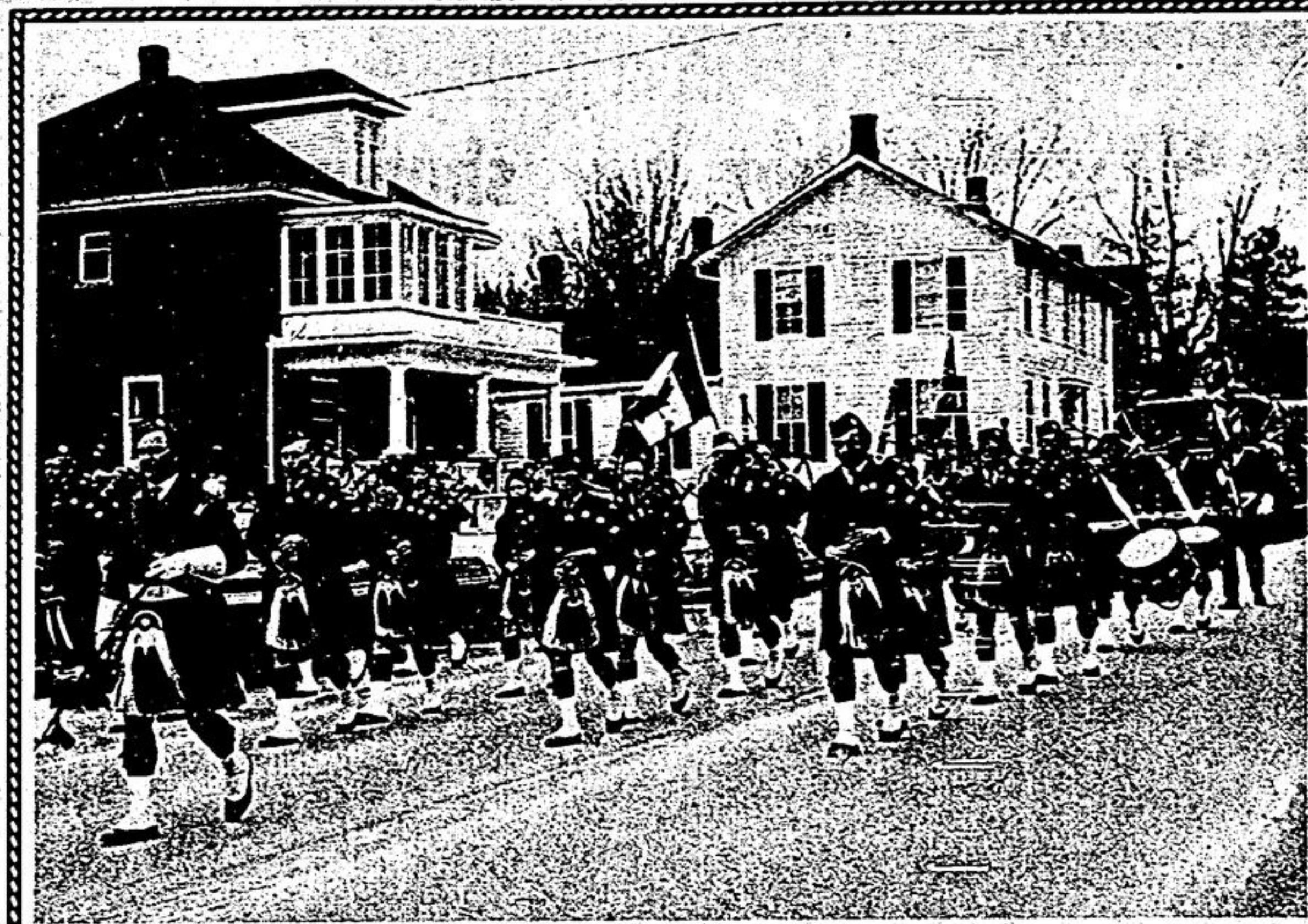
carol singing was provided by Mrs. Barb Wilson. The evening was hosted by president, Cliff Wallwork. Mr. Wallwork is well known to most residents of Whitchurch, and has been active in community work for many years. Special guests were Stouffville Reeve Ken Laushway and Mr. and Mrs. Kim Rogers. Mr. Rogers is a past Chairman of the Centre. A gift of

mums was presented to the oldest lady attending, Mrs. M. Rose, R.R.2, Stouffville. Mrs. Rose is 85. The oldest gentleman present was Mr. 'Pop' Yates. He received a box of chocolates. Mr. Herb Simpson gave a gift of chocolates to the ladies of the L.A., who served the dinner, and lovely plants were given to each of the weekly ecchres. Mrs. Eileen Card received a special surprise when she was presented with a large commercial vacuum cleaner, generously donated to the Centre by Mr. Jack Radford, proprietor of Radford's Groceries, Ballantrae. Mrs. Card is superintendent of the Centre. If you know of any Senior Citizen in the neighborhood who has not been receiving invitations to these annual dinners, please phone Mr. Wallwork - 640-1197.

Winners at the Tuesday night ecchre were: Ladies - Jean Jefferson - 99; Margory Smith - 96; Hilda Woodcock - 56; Men - Rolph Almstedt - 99; Bruce Harrison, 98; Allen Jefferson - 50.

The 1st Ballantrae Cub Pack awarded its 'Cub of the Night' prize for Dec. 9 to Norm Hall, Cedar Valley. Winning group was the Yellow Six led by Allan Vanden Hurk. The Pack is having its Christmas party next week.

The Ladies' Keep Fit classes at the Centre



Legion band leads Uxbridge parade

The Uxbridge Legion Pipe Band, a feature in many parades in the area this year, played a starring role as they led the Uxbridge Santa Claus

parade, Dec. 12. Sub-freezing temperatures failed to keep the crowds home as they lined the entire parade route. —Peter Harris.

VILLAGE OF STOUFFVILLE
NOTICE
GARBAGE COLLECTION
CHRISTMAS & NEW YEAR'S HOLIDAYS

Garbage normally collected on Friday, December 25th, 1970, will be collected on **THURSDAY, DECEMBER 24th, 1970.**

Similarly, garbage normally collected on Friday, January 1st, 1971, will be collected on **THURSDAY, DECEMBER 31st, 1970.**

LEHMAN & MADDEN.

snow wonder

Don't push yourself this winter... walk behind a new John Deere Snow Blower. Three models: 5-h.p. model with 26-inch cut, and two 7-h.p. models, 26-inch cut or 32-inch cut. If you're tired of shoveling... it's snow wonder. See us soon.

"Your Friendly John Deere Dealer"
HUTCHINSON FARM SUPPLY
 Hwy. 48
 3 miles north of Ringwood **640-2699**

'Green Gables'
Open house Dec. 25

BLOOMINGTON - The management of 'Green Gables' at Bloomington has extended a welcome to any senior citizens in the area to share in the noon-day dinner with them, Christmas Day.

The invitation, from Mr. and Mrs. Lou laVine, also includes persons who may be living alone and would like to share in the joy of the day's festivities.

"We're making dinner for 40 folks anyway," said Mr. laVine, "a few more will cause no extra work for anyone. Besides," he said, "it gives our own folks an extra lift."

Mr. laVine is asking local service clubs to cooperate and direct anyone they may hear about, to their Home, Dec. 25.

Altona concert - The annual Christmas concert for Altona children and parents will be held in the Community Centre, Tuesday evening, Dec. 22 at 7.30 p.m.

Friends of Mrs. Ralph Willis will be sorry to hear she is in Humber Memorial Hospital, Weston, having suffered a broken hip.

Christmas program
 By Ruth Hutchings
GREEN RIVER

Parents and friends are invited to the annual Children's Christmas Program at the Church Friday night at 8 p.m. Carollers will leave the Church Tuesday evening at 7:30 p.m. to entertain shut-ins with Christmas music. Gifts to be distributed should be at the Church Sunday.

A race track is a place where windows clean the people.

SPECIAL CLEARANCE ON BOOKS
Buy One Get One FREE!
 This Week-end Only

THE PERFECT GIFT
 from
CHRISTIAN SUPPLY CENTER
 170 Main St. W.
 Stouffville

GOOD COOKS
 KNOW JUST HOW TO PLEASE YOUR TASTE BUDS!
WE CAN PLEASE
 BOTH YOUR TASTE AND POCKETBOOK with these great

FLOOR COVERING BUYS
 9' x 12' CARPETS SURGED **49.95**

SHAG CARPET 7.75 sq. yd.
 100% Nylon, 8 colours

VINYL FLOOR COVERING
 REMNANTS - REDUCED TO CLEAR

MacLEAN'S
FURNITURE & CARPET
 Hwy. 48 - 3 mi. North of Ringwood
 640-3403
 Open - 9 a.m. to 9 p.m., Tues. thru Fri.
 Sat. until 6 p.m.

Hit grader

MARKHAM - A Markham man, who collided with a car at Main and Rouge Streets and a road grader near his home, and was later found by police slumped over the wheel was fined \$200 when he pleaded guilty to a charge of impaired driving, in Richmond Hill Court, Dec. 18.

A summary of evidence revealed that Arthur Adams was arrested after police checked his car, parked at the corner of George Street and Parkview Avenue, Sept. 21.

A breathalyzer test gave readings of 3.2 and 3.3.

In addition to the fine, Judge M.A. Charles issued an order prohibiting Mr. Adams from driving for 18 months.

WRAP
 no more home protection in one package at less cost with our Homeowners Policy. Call today!

Call
 Kenneth A. Shepherd
 7th Line
 Box 44, Markham
 Telephone 294-1662
 State Farm Fire and Casualty Company
 Canadian Head Office,
 Scarborough, Ont.

GO CLASSIFIED

PHILIPS STEREO '71

Enjoy the luxury of a long, low contemporary cabinet that never loses touch with today's demands for this kind of styling. The cabinet is a full sixty inches long. Proportions are well balanced for the best visual effect. End-gables are of heavy wood, finished with hand-rubbed veneers. The legs are of the corner post type—a single unit, no screw-on devices, which gives you a richer appearance and more durable construction. Finished in Natural Walnut and Soft Lustre Walnut.

WE SERVICE WHAT WE SELL.

STIPHOUT'S TV
 Sales and Service
 5042 Brock Rd. North, Clarendon
 PHONE 649-2913

CHRISTMAS GIFTS

only \$19.95

PING PONG TABLE
 REGULAR SIZE
 5' x 9' READY TO ASSEMBLE
 COMPLETE WITH LEGS

WALLPAPERS
10% OFF

Open Friday Evening till 9p.m.

BOLD

Ratcliff Lumber Ltd.
 Unionville Gormley
 Hwy. 7 - Kennedy Don Mills
 Road 889-1191
 297-1664

FOR FAST, EASY SNOW REMOVAL

Ask About the ARPS ROTO FLAIL SNOW BLOWER

Discharges snow in any desired direction or anywhere between! Does those big jobs quickly and efficiently!

or
FOR SMALLER JOBS

ADD TO YOUR CUB CADET SNOW BLOWER

Attachments 36" and 42" wide. Clear-snow fast and easily in any direction controlled from the driver's seat. Throw snow up to 20 feet - in 180° arc.

ASK FOR A DEMONSTRATION

CHAS. RICHARDS & SONS LIMITED
 No. 47 Highway, Stouffville, Ont.
 Tel: 640-3830

SPECIAL OFFER
DOG FOODS

CO-OP

CO-OP Hi-Boy DOG CHUNKS 25 lb. bag 50 lb. bag
 The complete dog food for both puppies and adult dogs **\$3.25 \$5.99**

CO-OP Hi-Boy DOG CHEWS 25 lb. bag 50 lb. bag
 Specially formulated for active hunting and working dogs **\$2.25 \$4.19**

CO-OP CANNED DOG FOODS 15 oz. cans Case 48 cans **.13c \$5.99**
 A balanced formulation in cans for instant-serve convenience

STOUFFVILLE CO-OP
 47 Edward St. - 640-1550

Beautiful Gifts by PHILCO

Model CT1563
 Available in black with turquoise and chrome accents. Volume, balance and tone controls. Swing down changer with automatic shut-off. The speaker enclosures are acoustically balanced for pleasing sound.
 Height: 14 3/4" Width: 24 3/4" Depth: 8 1/2"

Model CT1561
 Here is luxury and value unequalled. Beautiful walnut grained cabinet with ebony and chrome accents. Stereophonic High Fidelity. Solid State amplifier with volume and balance controls. Twin acoustically matched 4 inch speakers, enclosed, can be separated up to 10 feet for true stereophonic reproduction.
 Height: 7 1/4" Width: 19 3/4" Depth: 13"

AM-FM-BAND PORTABLE RADIO

Model R725WA
 Solid State AM/FM table radio in genuine teakwood finished to match walnut.
 • Solid state instant-play chassis
 • AFC switch for drift-free listening
 • 4" round speaker
 • Direct rotary tuning
 • Powercord FM—magnecor AM antenna
 • Provision for external antenna
 Height: 5 1/2" Width: 11 1/4" Depth: 4 1/2"

Model R750WH
 Solid State AM clock radio with automatic wake to music.
 • Dove white moulded cabinet
 • 40 winks button
 • 4 inch round speaker
 • Direct rotary tuning
 • Magnecor antenna
 • Full see-through protective front
 Height: 4 1/2" Width: 9 1/2" Depth: 5 1/2"

SEE THEM AT
Watts Electric
 106 MAIN ST. N. PHONE 294-3642

- 13 transistor cells, 5 diodes, 1 thermistor, 1 stabilizer
- RF stage for extra sensitivity
- Lighted slide rule vernier tuning
- Fine tuning controls—AM, SW, LW
- Automatic frequency control
- 6 bands: FM, AM, longwave, 3 broad shortwave bands (2 to 18 MC)
- Rich toned 6" oval speaker
- Separate tone control
- Telescopic FM/SW antenna; magnecor AM, LW antenna
- Plays on 6 "D" batteries
- Height: 9 1/4", Width: 12 1/8", Depth: 5 1/2"