

## Darcy McKeough attends Inaugural meeting regional council

RICHMOND HILL — The inaugural meeting of council for the regional municipality of York was held in the auditorium of Bayview Secondary School, Oct. 14.

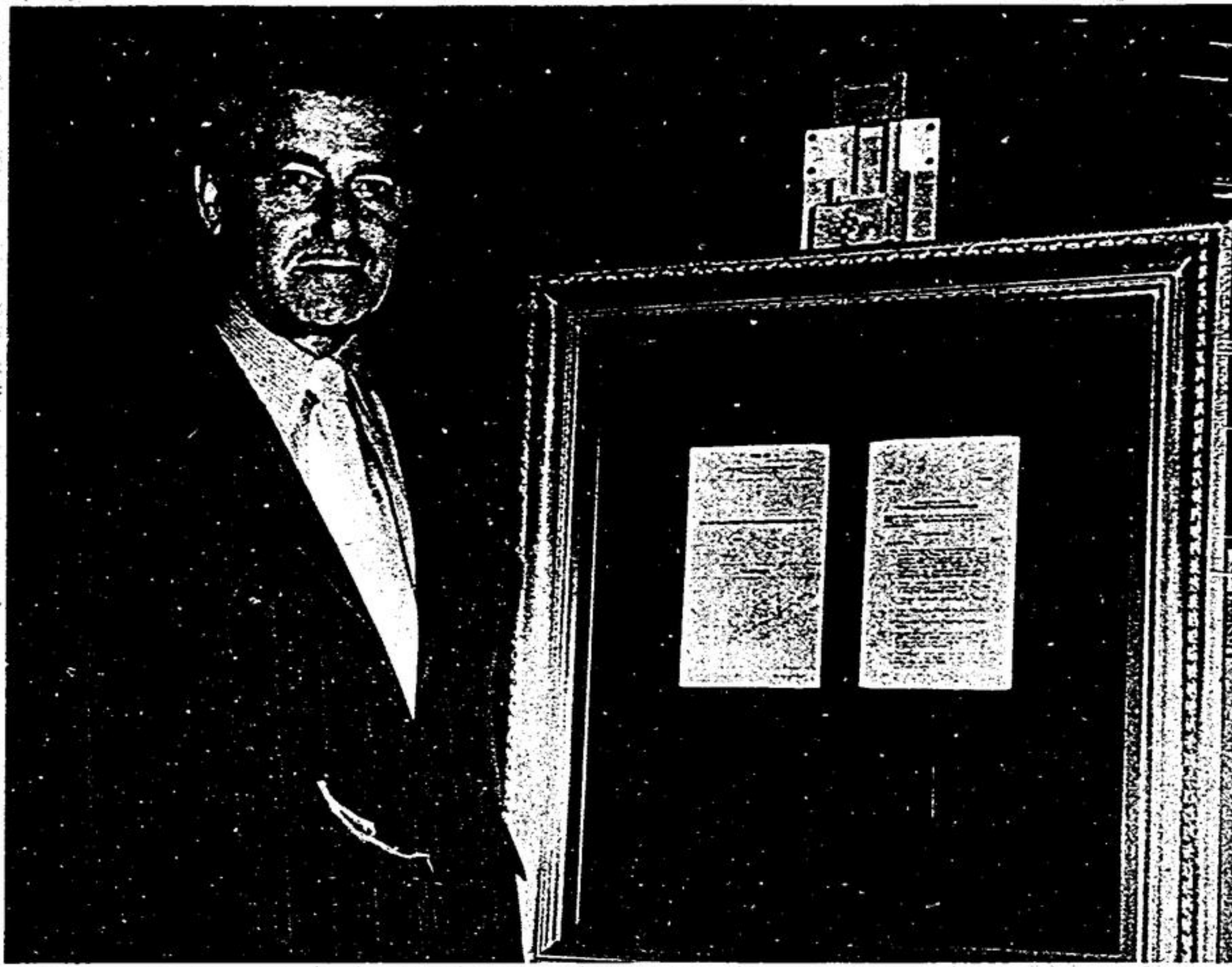
Heading up the session was the newly-appointed Chairman, Garfield Wright. He was accompanied in the opening ceremonies by Hon. Darcy McKeough, Minister of Municipal Affairs.

Mr. Wright introduced all members of the Regional Council — Mayor Illingworth, Town of Aurora; Mayor Anthony Roman, Councillors Harold Lawrie and Jim Jongeneel, Town of Markham; Mayor Bob Forhan and Councillor Twinney, Town of Markham; Mayor W.C. Lazenby, Councillors Towe and Plaxton, Town of Richmond Hill; Mayor Garnet Williams and Councillor A.H. Rutherford, Town of Vaughan; Mayor Ken Laushway, Town of Whitchurch-Stouffville; Mayor G.M. Burrows and Councillor Pollock, Twp. of Georgina and Mayor Ken MacTaggart, Township of King.

Chairman Wright made public a pledge to employ his energies and abilities to assure the success of this new government. Its prime objective will be to build a better community for the people of the region, he said, this requires a full spirit of cooperation with our area municipalities. It demands a mutual understanding of the challenges and the interests common to ourselves and our neighbors.

"In many ways this inauguration marks both a beginning and an end," said Mr. McKeough, "It marks an end to the difficult and arduous task of finding new ways to solve old insistent problems, as well as the beginning of a fresh approach to the solution of these problems."

Bill 102, the legislation that created the new York Region, has been enshrined in a glass plaque to be preserved for austerly.



Bill 102, the Provincial Government legislation that created the new Region of York, has been preserved for austerly in a special plaque unveiled at the inaugural

meeting, Oct. 14. Mayor-elect Ken Laushway of Stouffville stands beside it.

—Jas. Thomas.

### Editor's mail

## Recreation director needed now

To the Editor:  
With great interest I read your editorial 'Slow and Steady', Oct. 15 issue. As chairman of the Whitchurch Recreation

Committee, I would like to fill you in with some facts. This is not something that was just thought up and pushed because we felt Stouffville could help us pay the shot, but rather it is the climax of three years hard work and study on the part of our committee. It just happens to have come to a conclusion at this particular time.

Our committee had already budgeted for a recreational director for this year because our study revealed the real need for one.

We were prepared to proceed in hiring one at the beginning of the summer, but when the announcement was made to join Whitchurch and Stouffville together as one town we felt it only fair that we invite Stouffville's Recreation members to sit in with us and have equal share in the discussion.

To reach the point of hiring a recreational director, members of our committee have worked very closely and under the direction and guidance of area representatives from the Recreational Branch of the Department of Education. Also, for three years we have attended seminars, conventions and workshops to familiarize

ourselves with recreational workings throughout the Province. You mention that Stouffville and Whitchurch have two different situations, and you are quite right. You in Stouffville have been very fortunate to be blessed with very generous and energetic service clubs who have looked after your main recreational needs, raising funds in different ways but getting the proceeds to carry on these programs by selling tickets and admissions to you people of Stouffville (the taxpayers). In Whitchurch, however, we were not blessed with these fund raising service clubs, so our recreation committee had to raise funds by registrations, plays, etc., and then get the balance of our money through presenting a budget to council who in turn collected the money for us from (the taxpayers). So you see the same people paid the money out for recreation programs but it was just collected in different ways.

So even with the joining of the two municipalities together our problems are still here and I feel that there is now a greater need than ever for the services of a recreational director who will join our teams of workers together to coordinate our programs and future needs.

A good Recreation Director will pay his own wages in what he will save the municipality in money spent in the wrong way on unnecessary programs and duplicating services by untrained voluntary people.

The type of population in both Stouffville and Whitchurch is changing rapidly and the people who are moving in are accustomed to recreational programs for their leisure time in their past areas of living where the municipalities have progressed in great strides ahead of us in the field of recreation.

In closing, I will say that I am very pleased and proud of our committee's accomplishments and, if it will only keep one person out of trouble, or make one senior citizen's life a little more pleasant by supplying something to do in their leisure time, I will feel that the money is well spent.

William G. Paine, Chairman of Whitchurch Recreation Committee.

## Satellite city is planned for Unionville area

UNIONVILLE — Plans to establish a small satellite city of sixty to seventy thousand people here are proceeding under Bramalea Development Corporation. The plan calls for four new villages each with 15,000 residents and preservation of the core of old Unionville homes, numbering 70 to 80.

The Bramalea plan covers four thousand acres and the company has already invested \$8,000,000 in the project. The population of what can be termed old Unionville numbers some 250 and already one new stage, Varley Village, with 400 new homes is near completion. Each of the new villages will have its own neighborhood shopping plaza and an artificial lake is planned to complement the entire complex.

More than two dozen new schools will be erected according to Peter Ruddy, Bramalea project developer. The present price of an acre of land in

this area is \$15,000 but this price is expected to rise considerably over the next five years.

Jack Grant and Phil Mihorean, local developers involved in the plan, look for a population of 30,000 in the Markham-Unionville area in the next ten years. The "old home core" is a drawing card, Mr. Mihorean believes. He relates that a hard-to-sell house was snapped up in a week when it was revealed that it was built in 1881.

### Accident in fog

BALLANTRAE — Three persons were injured and damage totalled \$1,800 in a collision between two cars and a school bus, Oct. 14 on Hwy. 48 near Ballantrae.

The bus was in charge of Marguerite Baker, R.R.2, Stouffville. Car drivers included — Marion Hackwell, Don Mills and Doreen Norma Lehman, Watson Drive, Stouffville.

## East York plowing match

STOUFFVILLE — Village residents unable to attend the International Plowing Match can view a smaller version of the same thing this Saturday on the farm of Schell Bros. 19th Avenue and conc. 9, Markham Twp. The president for 1970 is Trevor Watson, Markham R.R.2. The awards banquet is in the Stouffville Masonic Hall.

Motorists required medical treatment in addition to Wm. Joseph Hackwell, a passenger who suffered facial lacerations and concussion. Driving conditions were hazardous at the time, police said, due to dense fog.

## Larry Solway

It's taken him nearly ten years to come to one important conclusion: in spite of world events crashing and thundering all around us, the most important thing is still human behaviour—yours and his.

What do you think about the midi, pollution, your husband's clothes, feminists, and kids?

Larry Solway  
9 to 11 a.m. weekdays  
**1050 chum**

# Savings?

It's in your interest to come to Guaranty

Because you can choose from several savings and investment plans to make sure you get the value and convenience you want.

Because there are longer hours at most of our offices where you can get cash and deposit cheques until 9:00 pm on Fridays, from 9:00 am to 1:00 pm on Saturdays, and from 9:00 am to 5:00 pm the rest of the week.

Because you can use our companion chequing account and saving account to take care of both sides of your financial life.

Because you can deposit by mail and we'll pay the stamp.

Because we can help you with all your money management problems. Our record shows how well we've managed our own business and how effectively we've applied our experience for the benefit of our many customers.

And right now  
Because...

**YOU GET 6 1/4%**

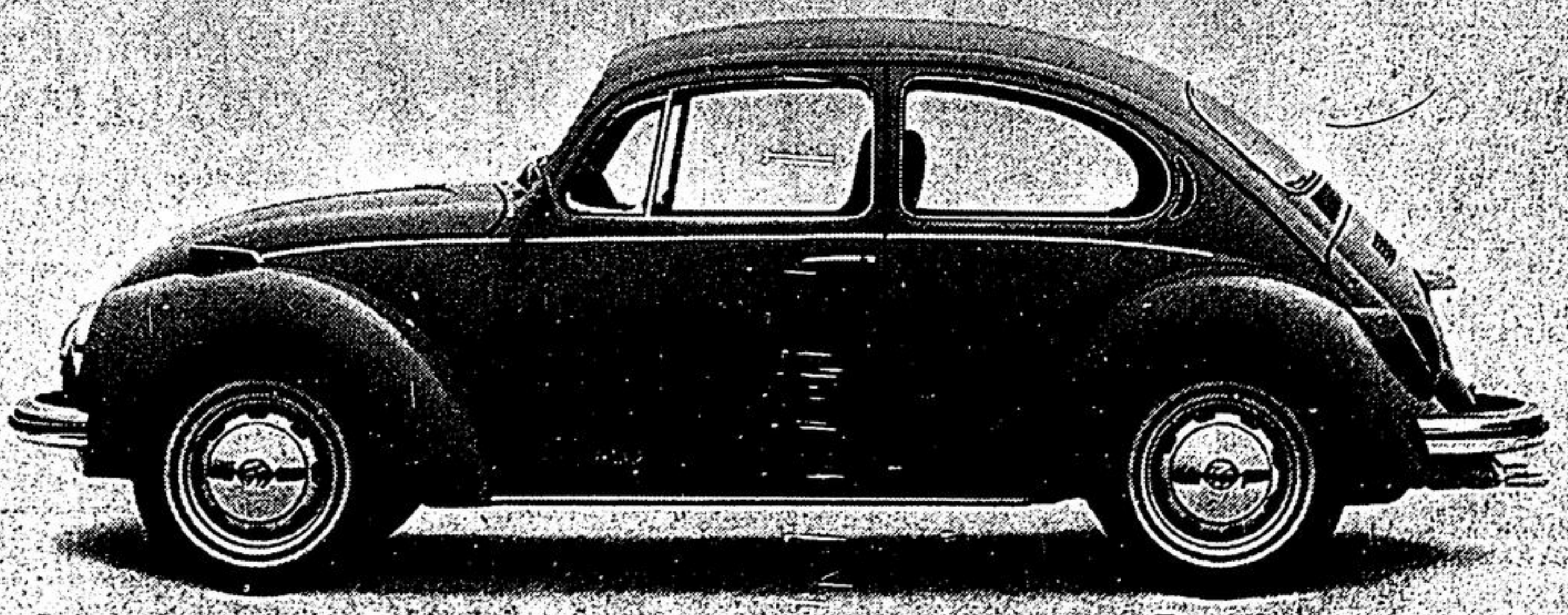
(6 1/4% per annum calculated on minimum monthly balance.) In case you hadn't noticed, this rate still exceeds that paid by Canadian chartered banks!

## Guaranty Trust

COMPANY OF CANADA  
Capital and Reserve \$33,000,000  
Member of Canada Deposit Insurance Corporation

80 Main St. West,  
Stouffville  
640-4000

# Five years ago, who'd have thought there'd be a Volkswagen this different?



## The Super Beetle.

Nobody did. Least of all us. Because 5 years ago, we thought the Beetle was virtually perfect. But, because we've never been able to leave well enough alone, over 1000 improvements have been made to it since.

Like a whole new front suspension system. A bigger, more powerful engine. A new heating system that now has two heaters and a total of 7 different outlets. And a new ventilation system. There's now a rear window defogger. A trunk that carries twice as much as ever. A wider

track for an even better ride. And bigger brakes for quicker stops. The end product of all this nit-picking? The 1971 Super Beetle. There's never been another car like it. And that includes Volkswagens.

