

# The York County Board of Education Financial Statement for 1969

## AUDITOR'S REPORT

TO THE SUPPORTERS OF  
YORK COUNTY BOARD OF EDUCATION

We have examined the Revenue Fund and Capital Fund Balance Sheets of the York County Board of Education as at December 31, 1969 and the Revenue Fund Statements of Revenue and Expenditure for the year then ended. Our examination included a general review of the accounting procedures and such tests of accounting records and other supporting evidence as we considered necessary in the circumstances.

In our opinion these financial statements present fairly the financial position of the Board as at December 31, 1969 and the results of its operations for the year then ended, in accordance with accounting principles generally accepted for Ontario school boards.

P. E. Held - License No. 3675  
of DUNWOODY & COMPANY, Auditors.

Toronto, Ontario,  
19 May 1970.

### YORK COUNTY BOARD OF EDUCATION ELEMENTARY SCHOOLS

#### REVENUE FUND BALANCE SHEET AS AT DECEMBER 31, 1969

ASSETS	
CASH	\$ 126,702
INVESTMENTS	19,896
ACCOUNTS RECEIVABLE	
Municipalities (including overlevies)	\$369,218
Other School Boards	22,996
Government of Ontario	
General Legislative Grants	240,656
Canada Pension Plan	5,888
Sundry	1,364
Government of Canada	610
Individuals	52,920
<b>TOTAL</b>	<b>693,652</b>

DUE FROM—Revenue Fund—Secondary	89,303
Capital Fund—Elementary	612,927
OTHER ASSETS—Arbitrators' Awards	40,524
<b>TOTAL</b>	<b>\$1,583,004</b>

LIABILITIES	
ACCOUNTS PAYABLE	
Municipalities (including overlevies)	6,339
Other School Boards	3,787
Trade Creditors	276,794
Payroll Deduction Liabilities	506,181
Debt Charges Due and Unpaid	23,377
<b>TOTAL</b>	<b>\$ 816,478</b>

OTHER LIABILITIES	
—Deferred Income	1,770
—Arbitrators' Awards	764,756
<b>TOTAL</b>	<b>\$1,583,004</b>

### YORK COUNTY BOARD OF EDUCATION ELEMENTARY SCHOOLS

#### REVENUE FUND STATEMENT OF REVENUE AND EXPENDITURE FOR THE YEAR ENDED DECEMBER 31, 1969

REVENUE	
LOCAL TAXATION	
Requisition	\$8,057,204
Supplementary Taxes, etc.	259,812
Adjustments for Under- and Overlevies	65,585
<b>TOTAL LOCAL TAXATION</b>	<b>\$ 8,382,601</b>
OTHER SCHOOL BOARDS	36,147
GOVERNMENT OF ONTARIO	
General Legislative Grants (Excluding Subsidy and C.P.P. Reimbursement)	7,700,835
Education Mill Rate Subsidy	584,150
Canada Pension Plan Reimbursement	95,188
Other	9,042
<b>TOTAL GOVERNMENT OF ONTARIO</b>	<b>8,389,215</b>
GOVERNMENT OF CANADA	24,336
INDIVIDUALS	41,939
OTHER	22,285
<b>TOTAL REVENUE</b>	<b>\$16,896,523</b>

EXPENDITURE	
Business Administration	\$ 489,537
Instruction	10,701,828
Educational Services	404,495
Attendance, Health and Food Service	7,544
Plant Operation	1,462,863
Plant Maintenance	541,581
Transportation	736,842
Tuition Fees	17,032
Capital Expenditure (Non-Allocable)	19,730
Other Operating Expenditure	251,063
Debt Charges	2,164,579
Non-Operating Expenditure	99,429
<b>TOTAL EXPENDITURE</b>	<b>\$16,896,523</b>

### YORK COUNTY BOARD OF EDUCATION ELEMENTARY SCHOOLS

#### CAPITAL FUND BALANCE SHEET AS AT DECEMBER 31, 1969

ASSETS	
Fixed Assets	\$33,706,015
Debtenture money receivable	676,132
Accounts Receivable	198,858
Due from Capital Fund—Secondary	566,916
Other Current Assets—Deposit on land	5,000
<b>TOTAL</b>	<b>\$35,152,921</b>

LIABILITIES	
Unmatured Debtenture Debt	\$20,496,387
Bank overdraft	172,581
Temporary loans	98,343
Accounts Payable	373,321
Due to Revenue Fund—Elementary	612,927
Reserve for Working Funds	208,630
Equity in Fixed Assets	13,190,732
<b>TOTAL</b>	<b>\$35,152,921</b>

### YORK COUNTY BOARD OF EDUCATION SECONDARY SCHOOLS (INCLUDING TRAINABLE RETARDED)

#### REVENUE FUND BALANCE SHEET AS AT DECEMBER 31, 1969

ASSETS	
CASH	\$ 6,035
ACCOUNTS RECEIVABLE	
Municipalities (including overlevies)	\$287,331
Other School Boards	40,255
Government of Ontario	
Canada Pension Plan	25,699
Sundry	4,888
Government of Canada	30,264
Individuals	70,335
OTHER ASSETS—Arbitrators' Awards	157,064
<b>TOTAL</b>	<b>\$621,871</b>

### YORK COUNTY BOARD OF EDUCATION SECONDARY SCHOOLS (INCLUDING TRAINABLE RETARDED)

#### REVENUE FUND STATEMENT OF REVENUE AND EXPENDITURE FOR THE YEAR ENDED DECEMBER 31, 1969

REVENUE	
LOCAL TAXATION	
Requisition	\$7,260,299
Supplementary Taxes, etc.	227,921
Adjustments for Under- and Overlevies	( 11,284)
<b>TOTAL LOCAL TAXATION</b>	<b>\$ 7,476,936</b>
OTHER SCHOOL BOARDS	88,264
GOVERNMENT OF ONTARIO	
General Legislative Grants (Excluding Subsidy and C.P.P. Reimbursement)	5,279,035
Education Mill Rate Subsidy	367,533
Canada Pension Plan Reimbursement	79,899
Other	319
<b>TOTAL GOVERNMENT OF ONTARIO</b>	<b>5,726,786</b>
GOVERNMENT OF CANADA	67,075
INDIVIDUALS	115,174
CAFETERIA	280,195
SUNDRY	9,782
<b>TOTAL REVENUE</b>	<b>\$13,764,212</b>

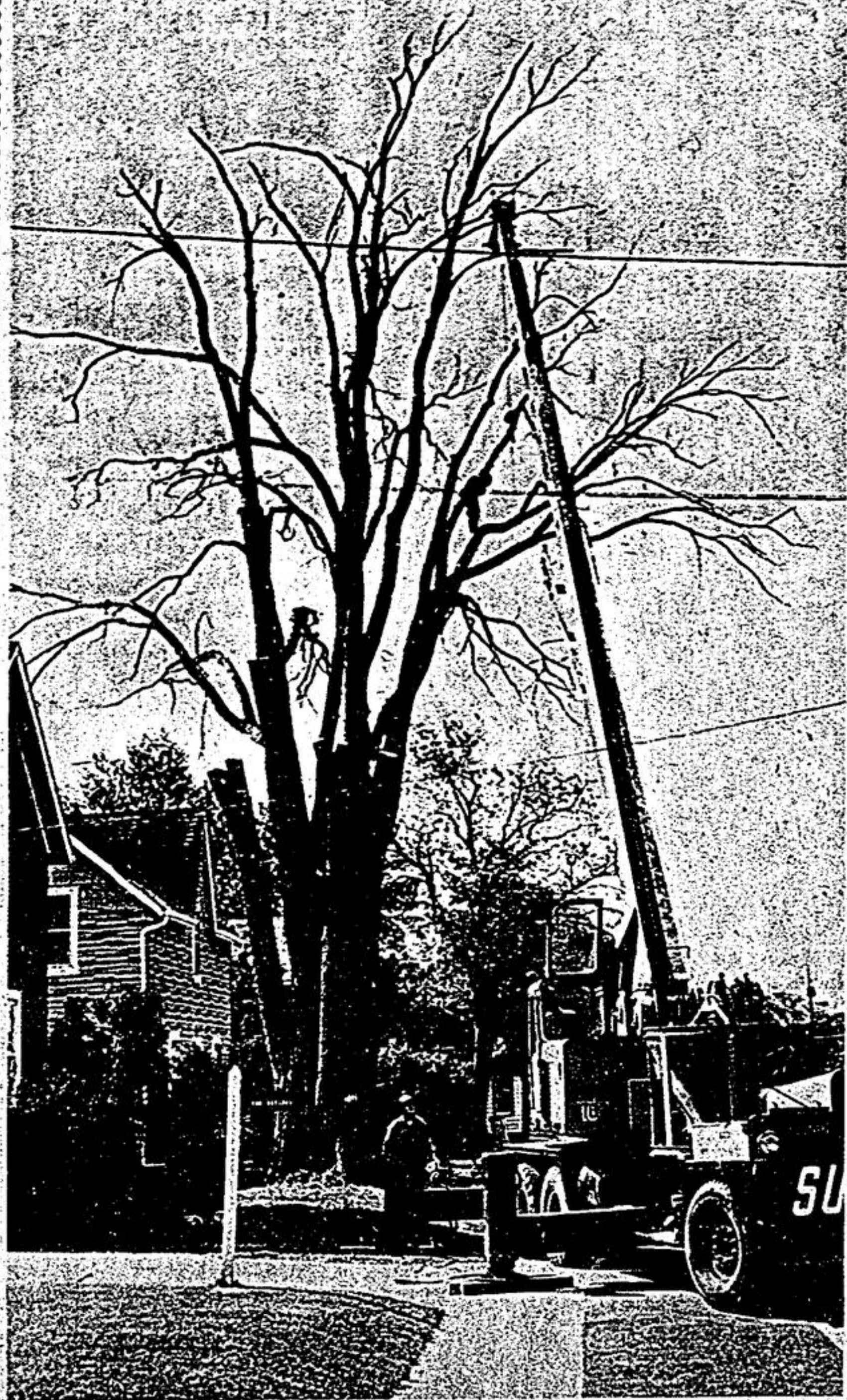
EXPENDITURE	
Business Administration	\$ 362,917
Instruction	9,313,246
Educational Services	285,195
Attendance, Health and Food Service	294,145
Plant Operation	991,799
Plant Maintenance	139,653
Transportation	520,568
Tuition Fees	62,717
Other Operating Expenditure	170,900
Debt Charges	1,413,159
Non-Operating Expenditure	209,913
<b>TOTAL EXPENDITURE</b>	<b>\$13,764,212</b>

### YORK COUNTY BOARD OF EDUCATION SECONDARY SCHOOLS (INCLUDING TRAINABLE RETARDED)

#### CAPITAL FUND BALANCE SHEET AS AT DECEMBER 31, 1969

ASSETS	
Fixed Assets	\$32,241,613
Debtenture Money Receivable	3,173,868
Accounts Receivable	1,013,394
<b>TOTAL</b>	<b>\$36,428,875</b>

LIABILITIES	
Unmatured Debtenture Debt	\$15,901,761
Temporary Loans	22,604
Accounts Payable	1,042,894
Due to—Capital Fund—Elementary	566,916
Reserve for Working Funds	19,149
Equity in Fixed Assets	18,875,551
<b>TOTAL</b>	<b>\$36,428,875</b>



### Once stately elm loses fight for life

Slowly, one by one, the stately elms are losing their fight for life. And this one, on the main Street of North Markham is no exception. Considered a hazard to traffic and nearby homes, it was removed, limb by limb, Saturday morning. Residents in the area estimated the tree's age at 150 years. —Jas. Thomas.

## A proud history

By Isobel Nigh

MELVILLE—Special services, May 31, marked the 125th anniversary of the congregation of Melville United Church. The beginnings of Melville Church date back to James Mustard who emigrated from Scotland to Canada in 1800, and settled in this area in 1801. Some of his descendants are still with us. He was prominent in leading others of the Presbyterian faith to hold services of worship in the local schoolhouse.

In 1799 the Rev. William Jenkins, a Presbyterian minister arrived from Scotland. He built a house in 1830 which still stands immediately south of the Church, and was owned and occupied for many years by the Carruthers family. For some years services were held in the Jenkins' home.

In May 1845 a petition was presented to Toronto Presbytery by John Bruce, and others, requesting that

they be received as a congregation of the Presbyterian Church. The request being granted Melville Church came into being one hundred and twenty-five years ago this month.

An historical milestone was reached on Monday, June 2, 1902, when a meeting was organized by the Melville Session to promote Church union. Attendance exceeded all expectations, and a Church Union Society was formed. The Rev. Mr. Blair, a Methodist minister of Markham, was present. He informed the General Superintendent of the Methodist Church, Dr. Carmen, who in turn brought the matter to the attention of the Methodist Conference which met that fall in Winnipeg. He told of the enthusiastic meeting held at Melville. This was well received and generated great interest in the Union Movement among the Methodists. It was reported that "The

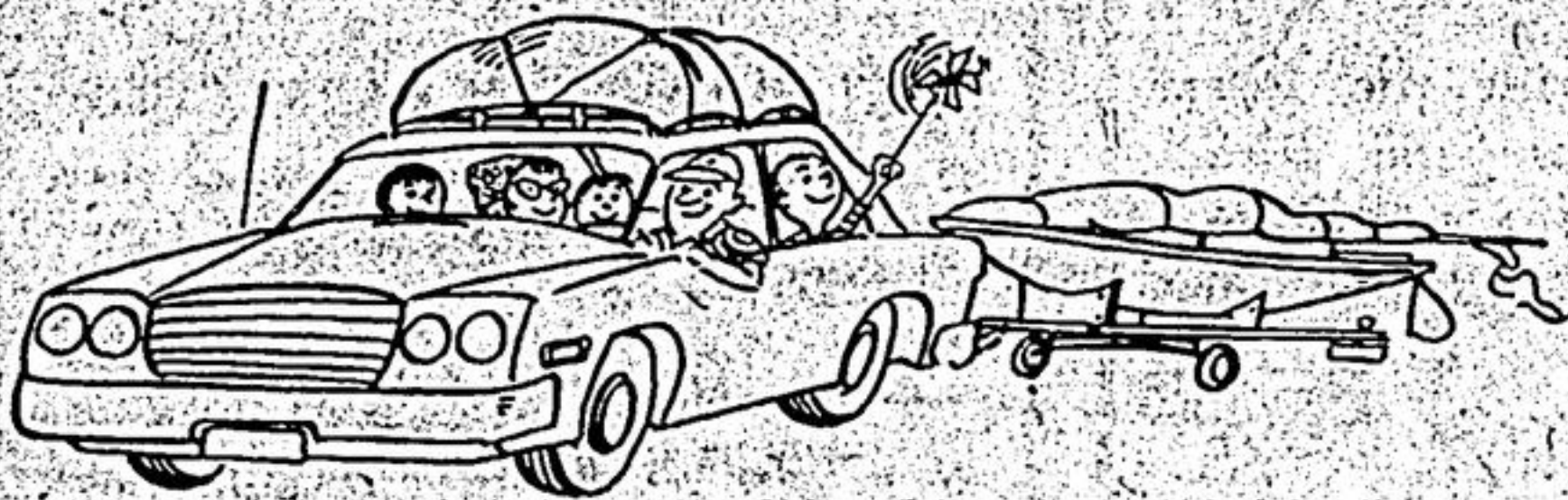
Session of Melville Church was the first Church Court to take action in connection with the Movement that was to bring into existence the United Church of Canada."

Melville is now comprised of an amalgamation of three congregations: Melville Presbyterian, 1845; Bethesda Methodist, 1855-1968; Peach's Primitive Methodist, 1847-1964. Recently Locust Hill United Church was added to make this a 2-point charge.

Mr. and Mrs. Leonard Brillinger and Doris, R.R.4, Stouffville, attended the convocation at Windsor University, May 30, when Harold was the recipient of his Bachelor of Applied Science Degree in civil engineering.

Miss Ruby Lehman and Miss Alice Vanpelt, Columbiana, Ohio, visited friends in the Stouffville area on the weekend.

## Glad we're vacationing with you!



Oh yes, Tex-made will be along this summer as always... in the sports shirts father wears, mother's bright dresses, the kids' shorts and sweaters, the canvas of their running shoes, the tarp on the luggage, the sailboat's sail, the headlining and tire fabric of the family car... just to mention a few ways. You're more familiar with Tex-made sheets, towels, pillow slips and other famous consumer products... a company like ours serves Canadians in hundreds of hidden ways. Drive carefully and have a good time!

dominion textile limited  
The Fabric People