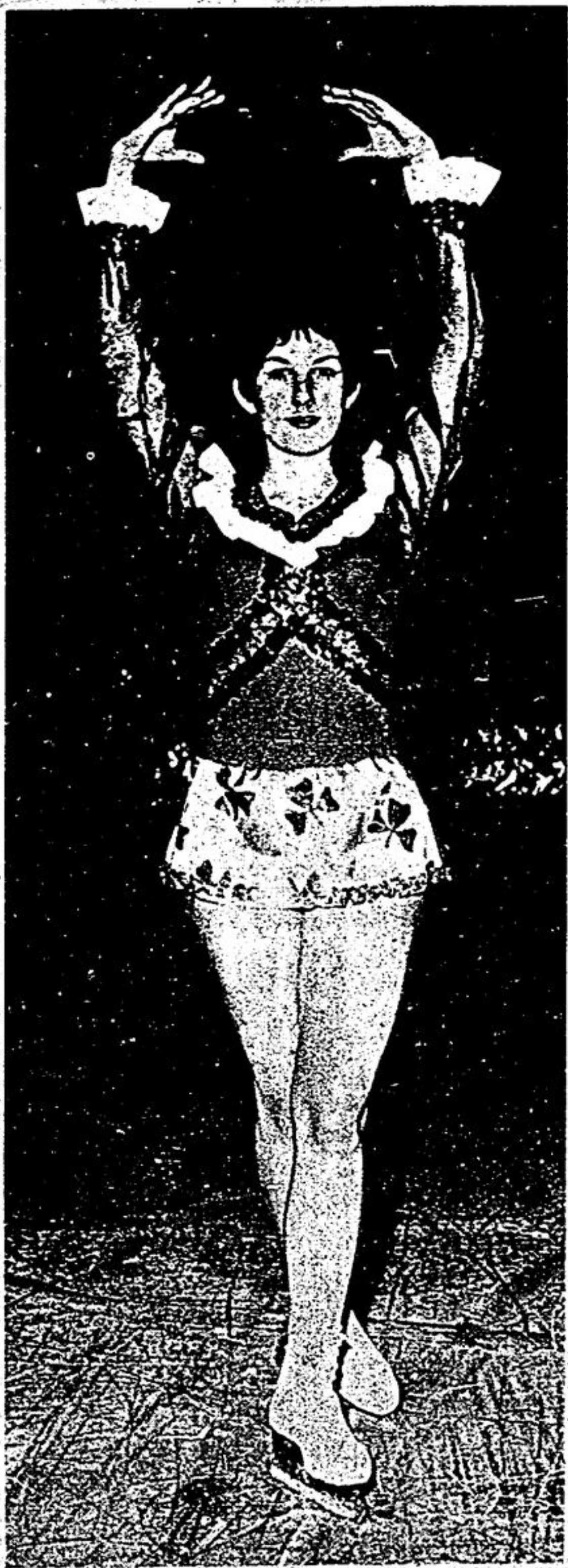


Little guys-dolls Ice Show star attractions

Comedy pair big hit



By Jim Thomas
STOUFFVILLE - The experienced skaters, with their spins, twists and turns - are great - sometimes breathtaking. But for true audience enjoyment, nothing captures the enthusiasm of a carnival crowd like the tiny tots - the little guys and dolls of pre-school age.

On Friday and Saturday, thirty-nine 'little people' poured out onto the ice as a part of the storybook tale 'Thumbelina'. They wobbled their way around the rink, some acknowledging the waves of dotting moms and dads, and others concentrating only on the art of remaining upright. Without knowing it, they stole the show.

Fourteen year old Wendy Wilkes, Rupert Avenue, played the part of an Irish Miss in the Stouffville Figure Skating Club's version of Osaka-Expo '70. —Jas. Thomas.

Alarming also to board — trustee

MARKHAM TWP. - The taxpayers of Markham Township will be somewhat comforted to know that the budget increase (16 percent) for education in York County this year is also viewed with alarm by members of the Board.

Mrs. Louise Aimone, a trustee representative for the township told council that every effort had been made to reduce the figure, but learned that over 90 percent of the total was essentially beyond their control. With the remaining 10 percent, she said the Board was determined to provide both quality and equality across the County, that now has jurisdiction over 44,000 students. "I believe we have shown ourselves ready to accept this challenge courageously," she said, "but this courage must remain within the realm of reality". Mrs. Aimone admitted that, by administering the spending of the largest portion of the municipal tax dollar, the Board comes out of the budget debate looking like the 'villain'. She noted however, that it was reassuring to be invited to a meeting and explain to both the council and taxpayers how the money would be spent.

The total budget for 1970 exceeds 35 1/2 million dollars. Instruction, that includes a staff of 2,000 teachers, represents 64 percent of the total, up by 13 percent over 1969. Business administration is up by 14 percent, plant operation and maintenance, 29 percent, transportation, 18 percent and debt charges, 16 percent.

Councillor Eldred King, a former member on the Markham Area Board, said it was difficult to explain to residents what added benefits their children were receiving for the added cost.

York education cost increase

Choose school 'queen'

Board Chairman John MacKay said improvements in the southern sections of the County were not so evident as in the more rural areas to the north. "The standard here is now available to a larger number," he said.

"In other words," replied Mr. King, "the South is now subsidizing the North".

Mr. MacKay said the Board hoped to arrange a meeting with Education Minister Wm. Davis in an effort to arrive at an improved subsidy rate.

STOUFFVILLE - Around midnight on Friday, May 1, one of several pretty girls will be selected to reign as student 'queen' of Stouffville Dist. Secondary School for 1970-71.

The semi-formal May Prom is considered the social highlight of the school year.

Trudy Cadieux, now enrolled at the University of Western Ontario,

London, accepted the honor in 1969. Her attendants were - Marlene Story and Sue Jones. Music for the event will be provided by Pete Schofield and the Canadians. The public is invited.

Pollution-free water should be the concern of every Stouffville resident.

EXPORT "A"
Canada's Finest
FILTER
Cigarette
REGULAR AND KINGS

Win up to \$1000
WITH GREENBACKS

Attend the meeting in the School, April 28 and hear this subject discussed.

Allen P. Stouffer

Guest lecturer

STOUFFVILLE - Allen P. Stouffer, son of Mr. and Mrs. Lambert Stouffer, Edward Street, Stouffville and an assistant professor of History at Bethel College, Mishawaka, Indiana, has been named guest lecturer during July and August at St. Francis Xavier University, Antigonish, Nova Scotia. It is the third largest university in the Maritime Provinces.



Allen Stouffer his M.A. Degree in California.

UNIONVILLE SKATING CLUB
PRESENTS
ICE FANTASIA
FAMILY ENTERTAINMENT
Featuring

★ PINOCCHIO ★ HOTEL LaGRANDE
★ FIDDLER on the ROOF ★ UNIONVILLE'S OWN
THING AND MANY OTHERS

FRI., SAT., SUN. — Apr. 17, 18, 19
4 COMPLETE SHOWS
Fri. — Show Starts at 8 P.M. — Sun. — Show starts
2 P.M. — SAT. — 2 SHOWS — Starting at 5 P.M.
& 8:45 P.M.

CROSBY MEMORIAL ARENA
Kennedy Road — Unionville
FOR TICKETS CALL — 444-4374, 884-1529, 297-1492
Sanctioned by C.F.S.A.

skating flawless. A touch of professionalism was added by club pro, Anne Marie Taylor. Don Huxtable served as year's best as good.

To close street

STOUFFVILLE - Beginning June 1, the section of Church Street, south from the Memorial Park gates to Burkholder Street, will be closed as recommended by the Parks and Recreation Committee.

INVEST NOW **9%**

on Guaranteed Investment Certificates. Also "CASHABLE AT ANY TIME" Guaranteed Savings Certificates up to 8 1/2%. For further information contact your financial adviser or write or telephone collect:

STANDARD TRUST
214 Bay Street, Toronto 1
363-5477
area code 416

CERTIFICATES AVAILABLE THROUGH:
THOS. N. SHEA Limited, Realtor
8 Wellington Way — Markham
Call Bill Jackson — 294-1372



- FURNITURE by**
- Sklar • Peppler • Braemore
 - Kilgour • Kroehler • Kaufman
- APPLIANCES by**
"You Can Be Sure if it's WESTINGHOUSE"
- TV & STEREO by**
- Philco • Westinghouse
- CARPETS by**
- Harding • Celanese
 - Peerless • Ozite
- FREE Underpad with every carpet. We install. We take time to do it right!

QUALITY FURNISHINGS at REASONABLE PRICES
RAYMER INTERIORS
41 Main West — STOUFFVILLE — 640-2092

SPRING SALE

ON NEW OR NEARLY NEW TRAILERS

INTRODUCING:
A BRAND NEW LINE..

SUNKAMPER

6 New Models of Hardtop Tent Trailers
SLEEP 8 FOR ONLY \$1995
IN ONE OF THESE TWO MODELS

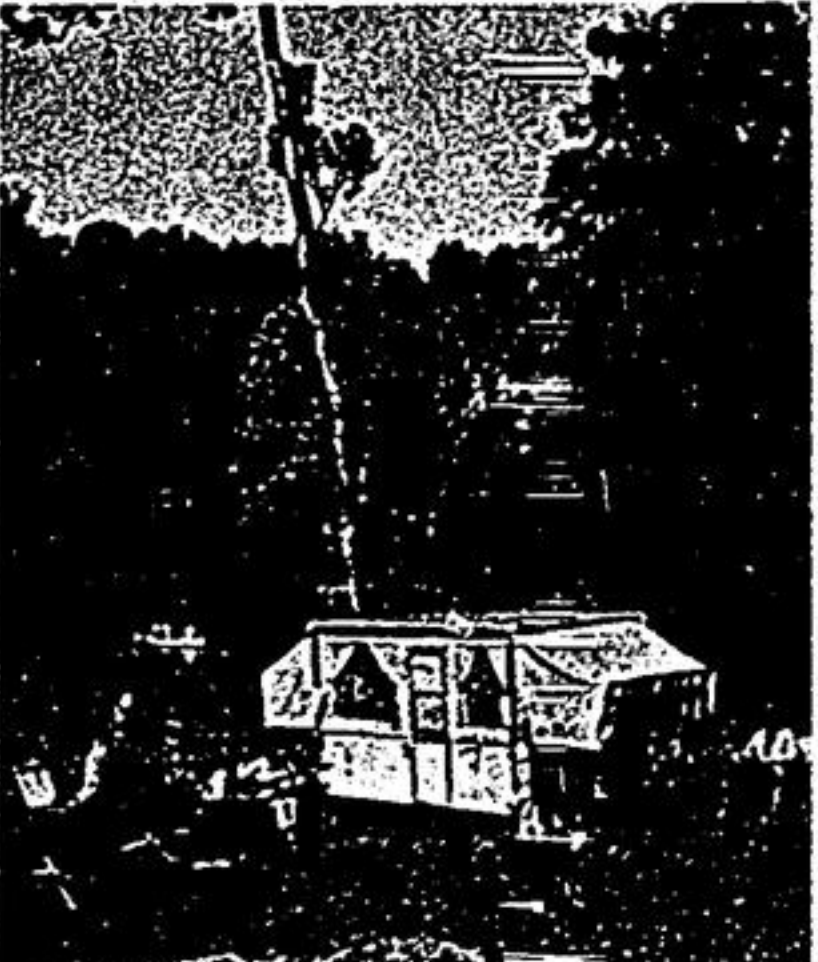
CD8

The double dinette in this model provides ample seating area for as many as the unit will sleep. Overall length 13'. Width 6' 11". Three-burner stove. City water hook-up. 50 lb. ice chest. 10 gallon water tank with marine type pump. 2 overhead 110v - 12v lights. Headroom 6' 2". Road height 48".



CS8

Let's go camping. The family way to go... to see... to enjoy, together. This model features the single dinette with lounge. Overall length 13'. Width 6' 11". Three-burner stove. City water hook-up. 50 lb. ice chest. 10 gallon water tank with marine type pump. 2 overhead 110v - 12v lights. Headroom 6' 2". Road height 48".



With warm weather here, and warmer weather ahead, it will soon be time for some fun in the sun. Make every weekend a holiday with one of our new models of trailers.

Exclusive Dealership Of These Great Names

- ★ Shamrock
- ★ Coleman
- ★ Hi-Lo Trailers
- ★ Wiltsie Truck Caps

Special!
1969 MODELS TO GO AT COST

We have six of last year's models we have to clear to make room for 1970 trailers. None have been used. All are direct from the factory.

- 3 HI-LO Travel Trailers
- 3 SHAMROCK Trailers

ROBERT'S TRAILER SALES
MAIN ST. AT THE 10th CONCESSION
STOUFFVILLE
TELEPHONE --- 640-4651