

Uxbridge Township council refuses snow removal at airport

UXBRIDGE TWP.—The grant, was made by the Township of Uxbridge has port owner, Feb. 20. refused to take equipment Edward Lanigan ex- onto the property of Good- planned that about 300 wood Airport to remove craft had utilized the facil- snow from the runways. ities during 1969, without The request, in lieu of a charge. He said companies

found it convenient to bring in parts by plane to the several industries now operating in the municip- ality. He said he had three planes available for this purpose. Mr. Lanigan noted that one runway was still intact but the other had been dug up by a gravel firm that owns the land. Road Superintendent Ross Pew informed mem- bers that township equip- ment could not be spared for work of this kind.

1970 rebate average \$66.86 based on 1969 rate schedule

STOUFFVILLE — The tax burden on an average home in Stouffville last year amounted to \$378. This amount was reduced by \$63.58 through the Provincial Government's Basic Shelter Exemption Plan.

Using the same figures as in 1969 but the formula as approved for 1970, the reduction here will amount to \$66.86. The calculation used is a basic \$30 plus 10% of the average residential tax paid by householders in the municipality in 1969. Municipal Affairs Minister Darcy McKeough feels the program has worked well since its introduction in 1968.

The majority of taxpayers will receive a greater benefit in 1970 than they did last year. No loss will be greater than \$5 and no gain higher than \$15. No taxpayer will receive a tax reduction exceeding 50%

of his taxes on any prop- erty. The program will still be administered through the Clerk's office and all cal- culations are expected to be complete by the end of March.

Home-owners who make regular payments for taxes to their mortgage holders will, as in prior years, have these payments ad- justed to give effect to the tax reduction. Tenants will continue to receive their reductions from their land- lords on or before Dec. 31, 1970. Tenants who move in or out of an apartment during the year will re- ceive a proportionate amount of the reduction based upon the length of tenancy.

In the Town of Mark- ham, the average residen- tial tax burden in 1969 was \$487. On the basis of the new formula, the reduc- tion will increase from \$56.83 to \$71.62. In Mark-

ham Twp., the average tax burden was \$555 and the increase from \$52.16 to \$64.68; in Whitchurch, the tax average was \$60.82 and the increase from \$60.82 to \$74.90; Town of Uxbridge tax average, \$318 and re- duction payment the same at \$61.67; Uxbridge Twp., tax average, \$497 and the tax reduction up from \$47.85 to \$62.44; Pickering Twp., tax average, \$542 and the tax reduction up from \$70.39 to \$76.62.

BIG LAWNS LOOK LITTLE TO A NEW MF 12 TRACTOR



NO CLUTCHING Hydra Speed DRIVE

Here's the best from Massey-Ferguson, world's largest tractor manufacturer. It's the mighty MF 12 lawn tractor with Hydra Speed to eliminate clutching and shifting for on-the-go speed control without touching the throttle. A powerful 12-hp engine to let you romp through big power jobs. New advanced solid state ignition for the fastest, surest starting ever. Convenient, quick-responding controls that make work fun. Available with a big choice of attachments like the clean-cutting 42-inch mower. See the new MF 12 now!

CREDIT TERMS

SEE YOUR MASSEY-FERGUSON DEALER

RUMBLE TRACTOR and EQUIPMENT

MASSEY-FERGUSON SALES AND SERVICE
Corner of Don Mills and Stouffville
Roads
Gormley, Ontario
PHONE 887-5886



Heads Holstein Club

ONTARIO CTY. Ralph Honey, Seagrave, R.R.2, is the 1970 president of the Ontario County Holstein Club.

The executive was named at a meeting held in Uxbridge. The honorary president is Frank Barkey, Claremont, R.R.3.

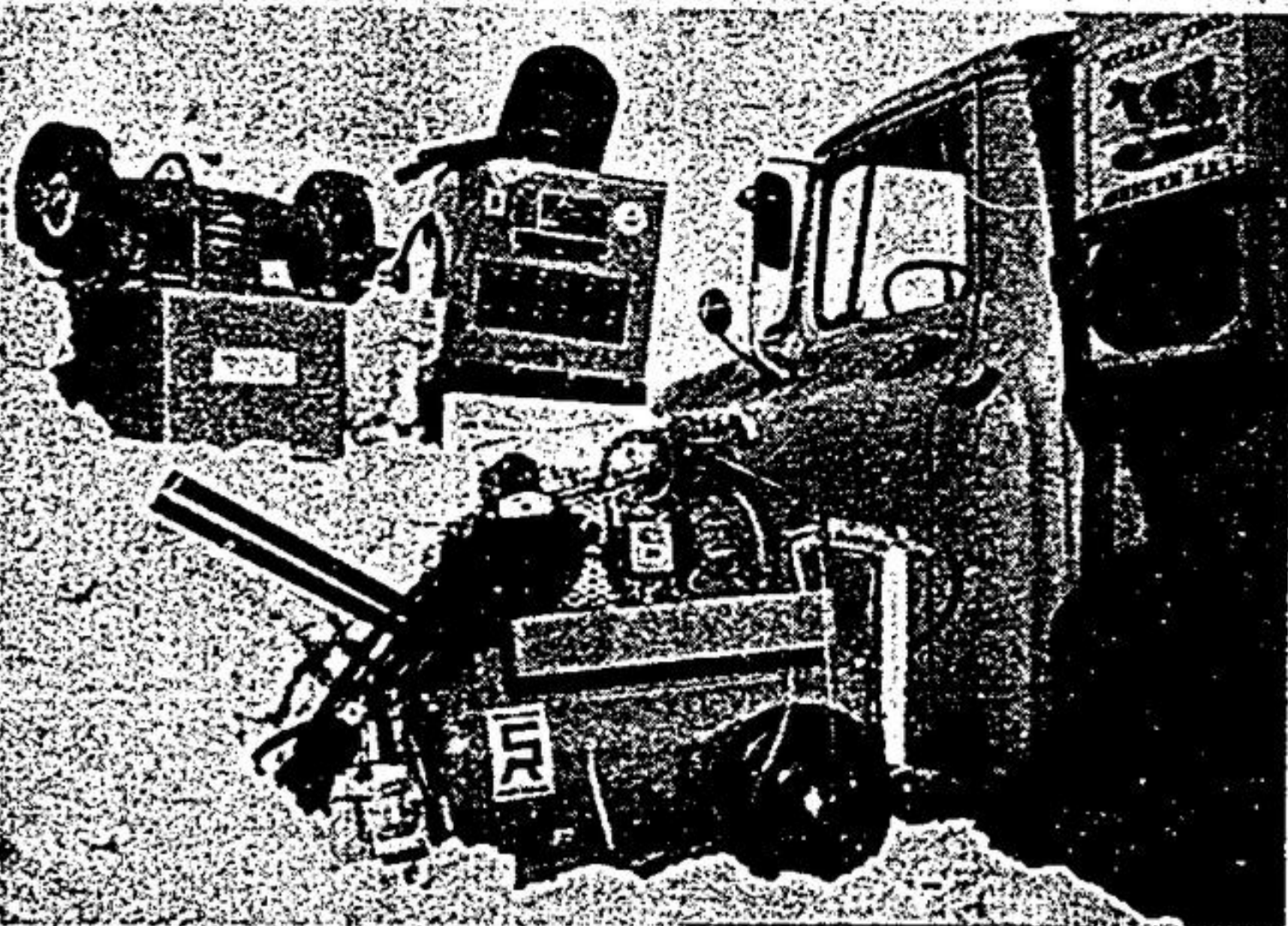
Other positions are held by Maurice Jebson, Beaverton, R.R.3, vice-president, Lynn Fair, Uxbridge, secretary-treasurer, Ross Evans, Uxbridge, R.R.3 and Armour McMillan, Greenbank, auditors.

The annual Holstein Banquet was held March 4 at Columbus.

A traveller stopped at a motel advertising "Free TV. Rooms \$8 and \$10." "What's the difference between the \$8 and \$10 room?" he asked. Replied the clerk: "The \$10 room has the free TV."

MAKE IT AN EASY SPRING!

Use Smith-Roles Quality Products.



- SMITH-ROLES WELDERS Available in models from 180 amps to 300 amps.
- SMITH-ROLES COMPRESSORS with 4.9 CFM pump & 3/4 h.p. motor.
- SMITH-ROLES BENCH GRINDER features 1 1/2" shaft, 8" stones, 3400 RPM. (cut-off wheel available)

Also Available—FERTILIZER "Drill-Fil", Acetylene Torches, and other quality S.R. equipment plus THE FARMER'S INTERCOM from

S-R COMET FARM SUPPLY

Murray E Jones
RR #1 — Ashburn

649-5201



SMITH-ROLES

WHO SEZ

PEOPLE DON'T READ SMALL ADS? YOU ARE!

For action call THE TRIBUNE 640-2100

CARD'S DOMINION HARDWARE

BARGAINS FOR YOU

WHILE STOCK LASTS!

From the PAINT DEPT.

C.I.L. Flat, Semi Gloss, Gloss
RED BARN PAINT \$5.95
\$8.70 Value

5' Aluminum STEPLADDER \$12.95

From the GARDEN DEPT.

2 only 1969 — 5 h.p. TILLERS Reg. \$209. ea \$189 each

1 Only '69 — 25" TORO Riding Mower 5 H.P. Reg. \$499.95 \$449

Benjamin Moore paints



TORO MTD LAWN BOY

From the HARDWARE DEPT.

CHAIN SAW Skill model 1631. Compact & light weight. \$199.95

8" BEAVER TABLE SAW complete with stand. Reg. \$129.95 \$109.95

From the APPLIANCE DEPT.

Wood's Freezers

- 7 cu. ft. \$169.95
- 11 1/2 cu. ft. \$189.95
- 16 cu. ft. \$209.95
- 19 cu. ft. \$219.95
- 22 1/2 cu. ft. \$229.95
- 29 cu. ft. \$269.95

DEDUCT \$10.00 IF PICKED UP AT STORE

SKIL — BLACK & DECKER — G.E. — MOFFAT — INGLIS — HOOVER

CARD'S

CARD'S DOMINION HARDWARE

29 Main West — Stouffville
Phone 640-3622

OPEN THURS. & FRI. TILL 9 P.M.