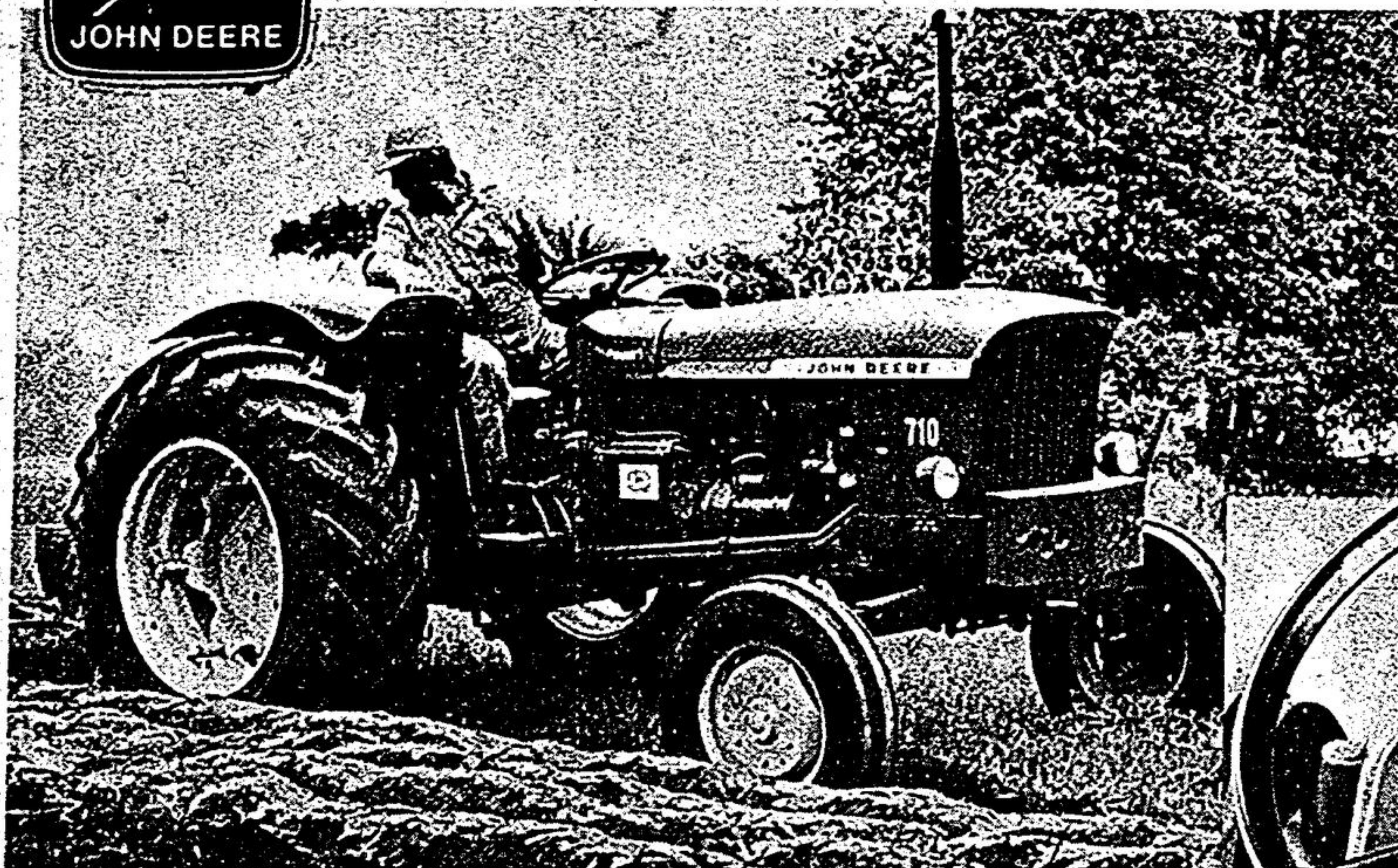




Don't Let the Low Price Sway You . . .



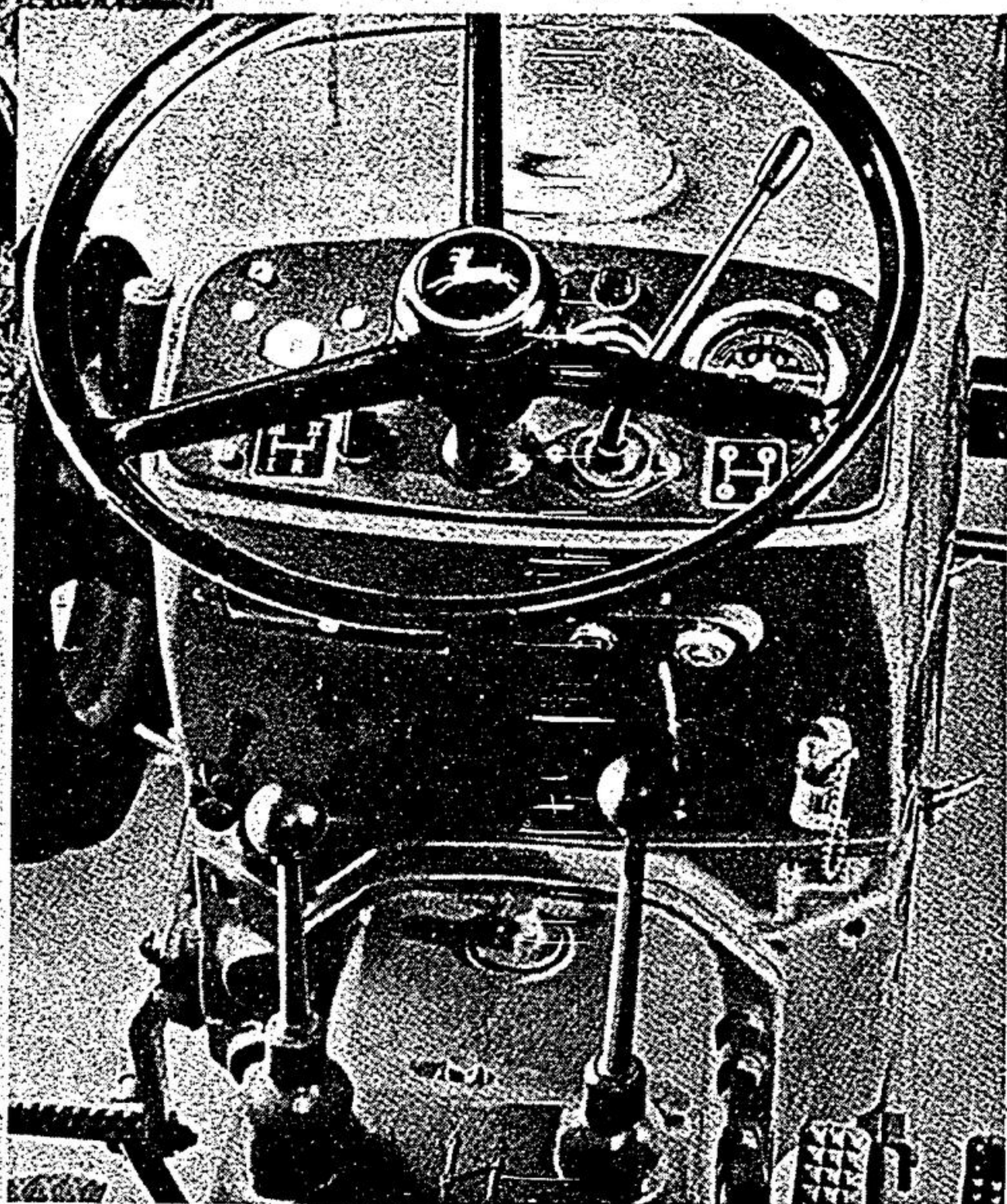
test drive a
510 or 710
TRACTOR
and learn first hand
what a
TRUE BARGAIN IS!

3-plow 510 4-plow 710 **TRACTORS**

The low price is the least of it...the best part is how much tractor you get for your money!

COUNT THESE FEATURES

- * Variable-speed direct-injection Diesel engines.
 - * Easy shifting transmissions with 10 forward and 3 reverse speeds
 - * Universal 3-Point Hitch
 - * Automatic Load-and-Depth Control
 - * Smooth-acting hydraulic system
 - * 540 and 1,000 rpm rear PTO
- PLUS . . . differential lock . . . hand and foot throttles . . . double disk brakes
 . . . deluxe seat . . . fenders . . . horn . . . lights . . . swinging drawbar and
 adjustable wheel tread. Come see true value!



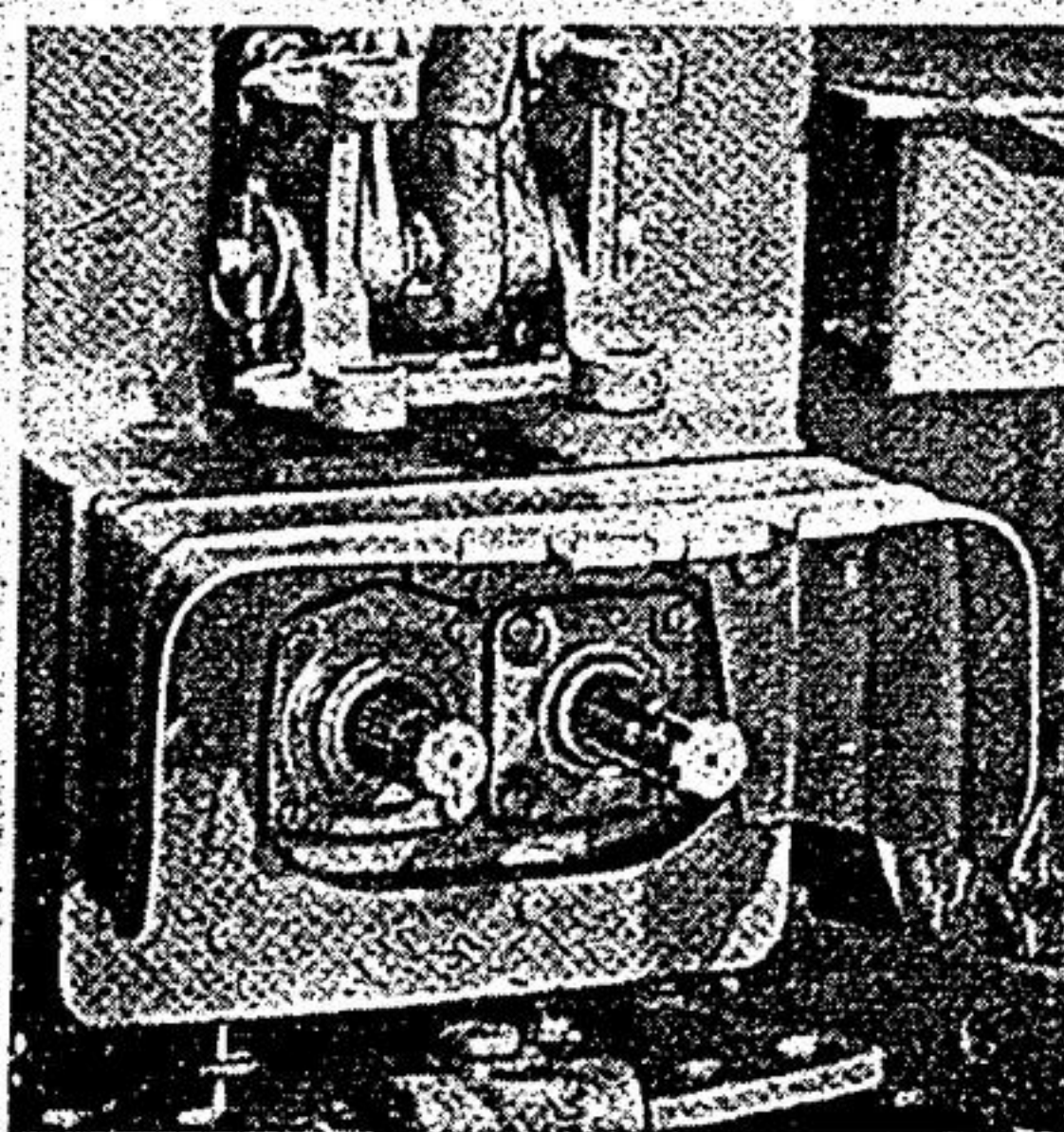
CONVENIENT CONTROLS

WE HAVE STOCK NOW
BEFORE YOU MAKE ANY TRACTOR PURCHASE
COME AND SEE THE 510 & 710.
 (You'll be glad you did!)

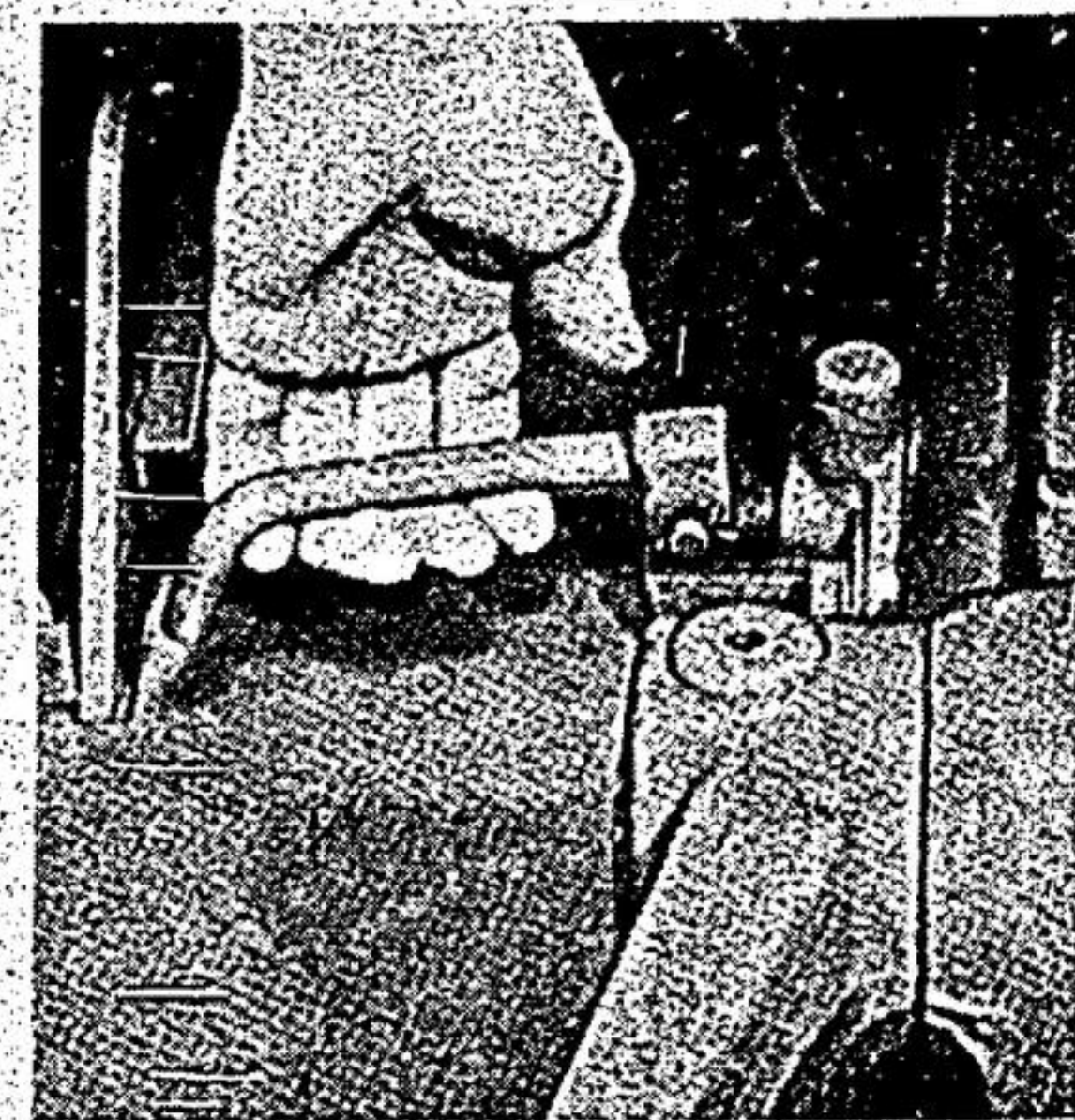
A "SERVICE CLINIC" EVENING FOR YOU
TUESDAY, MARCH 17 - 7.45 p.m.

Subject: "Care & Maintenance of Your Tractor"
 You're invited to take part in a discussion headed by Mr. Fred Gray, John Deere Service Engineer, on how to get longer life from your Tractor. Come and join us, you've nothing to lose and everything to gain.

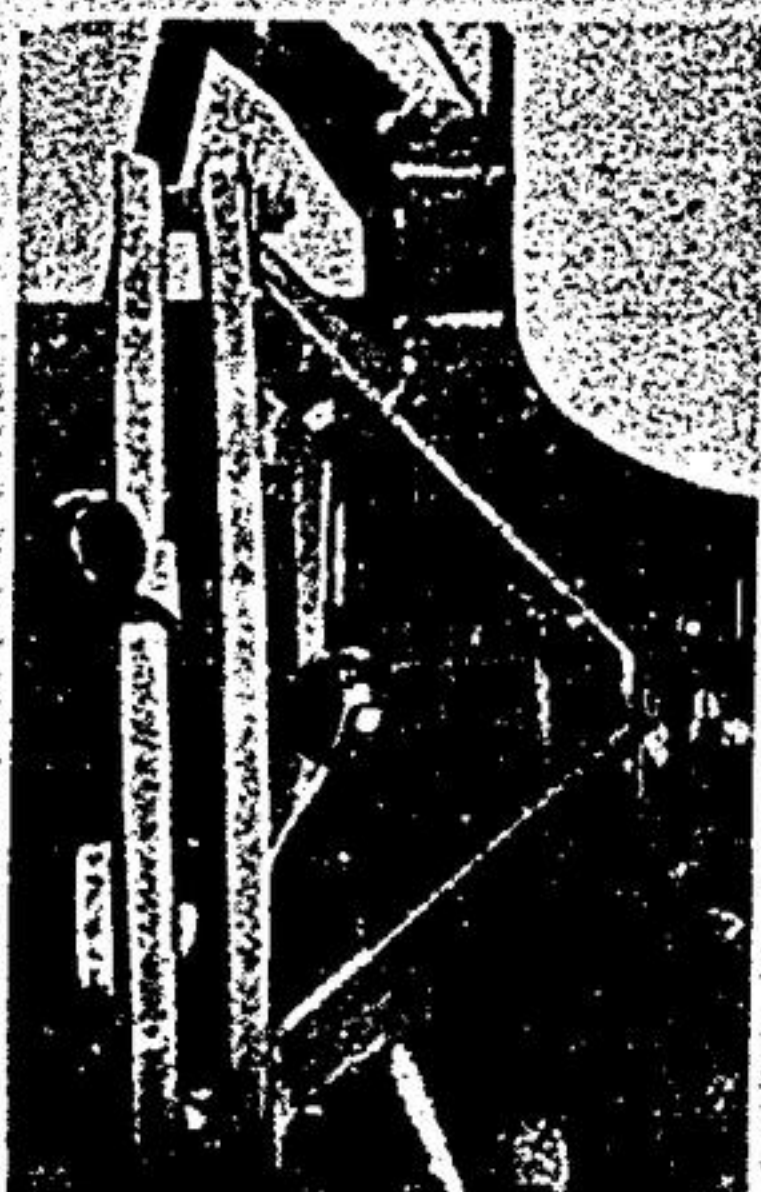
GIVE US A CALL TODAY - 640-2699



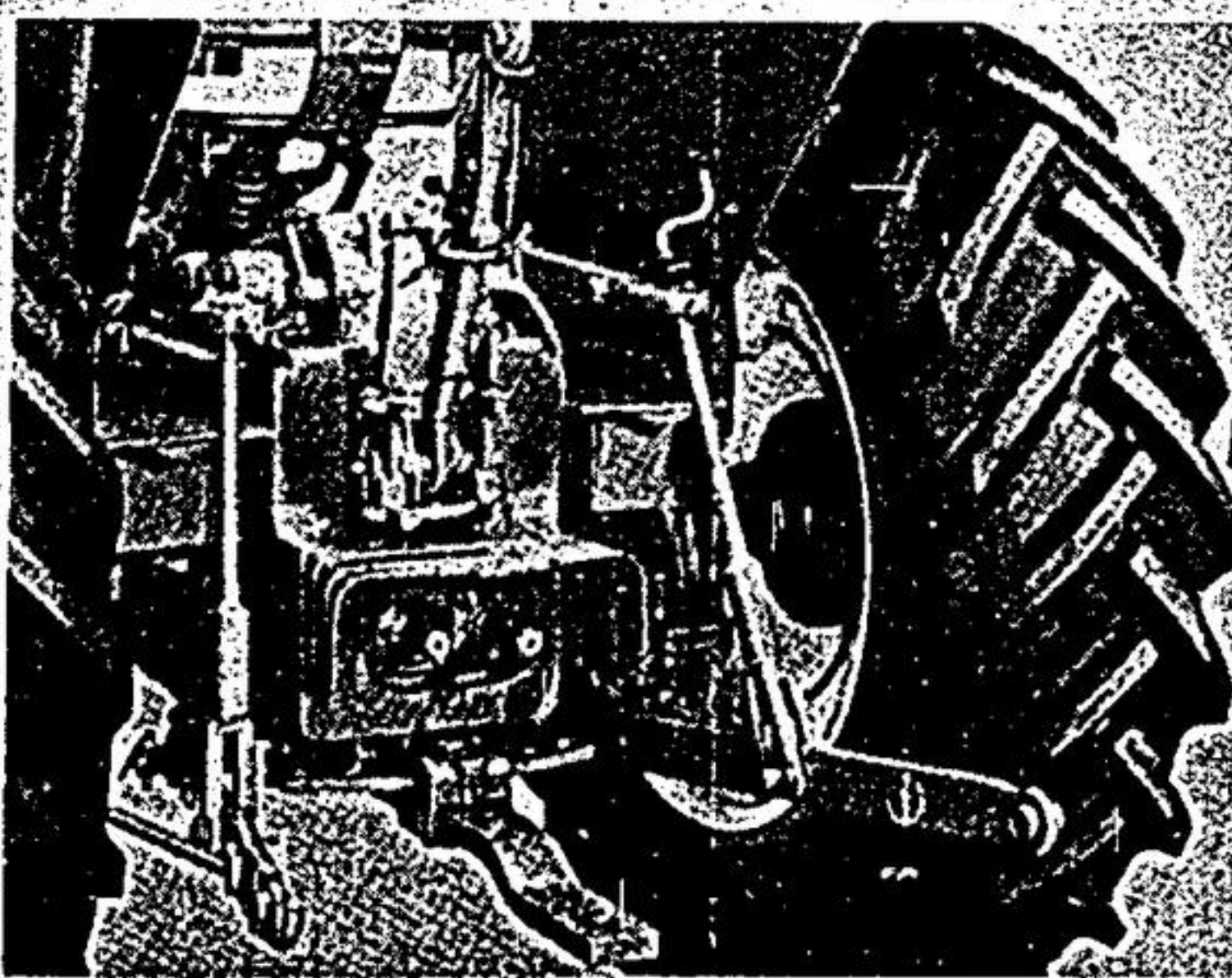
540 & 1,000 rpm PTO



DIFFERENTIAL LOCK



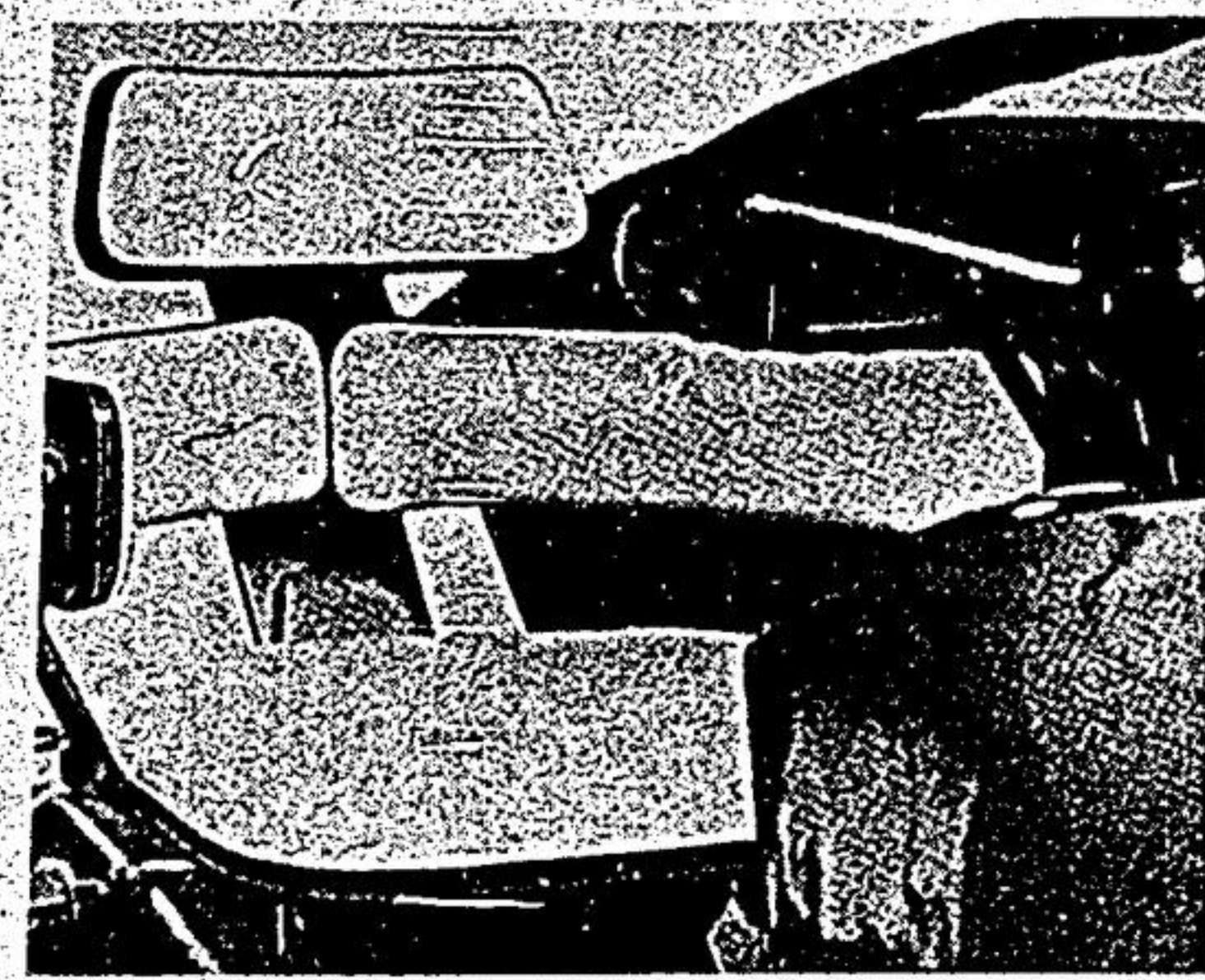
Handy Hydraulic Controls



Universal 3-Point Hitch



Double Disk Brakes



Fully Cushioned Seat



HUTCHINSON

FARM SUPPLY
 Hwy. 48, 3 miles north of Ringwood **640-2699**