

Town of Markham

Suggest mass assessment appeal

MARKHAM — The matter of the increased residential assessment under the new county program was the subject of heated discussion at Markham Town Council, Monday.

Many residents have called council members and the municipal office about the matter.

Council agreed that publicity for the public meeting, called to outline the program was poor. They said the meeting should have been scheduled after the time of mailing rather than before.

Mayor Walker told council that it was her opinion that everyone in Markham should file an appeal since many figures, in her opinion, seemed out of line.

In the Town of Markham, an increase of over five times the old assessment would mean a probable hike in taxes. Anything below that figure would likely bring a reduction. The new assessments are based on the 1967 market value of property.



MRS. ANITA SNOW



MRS. VIOLA McCREIGHT

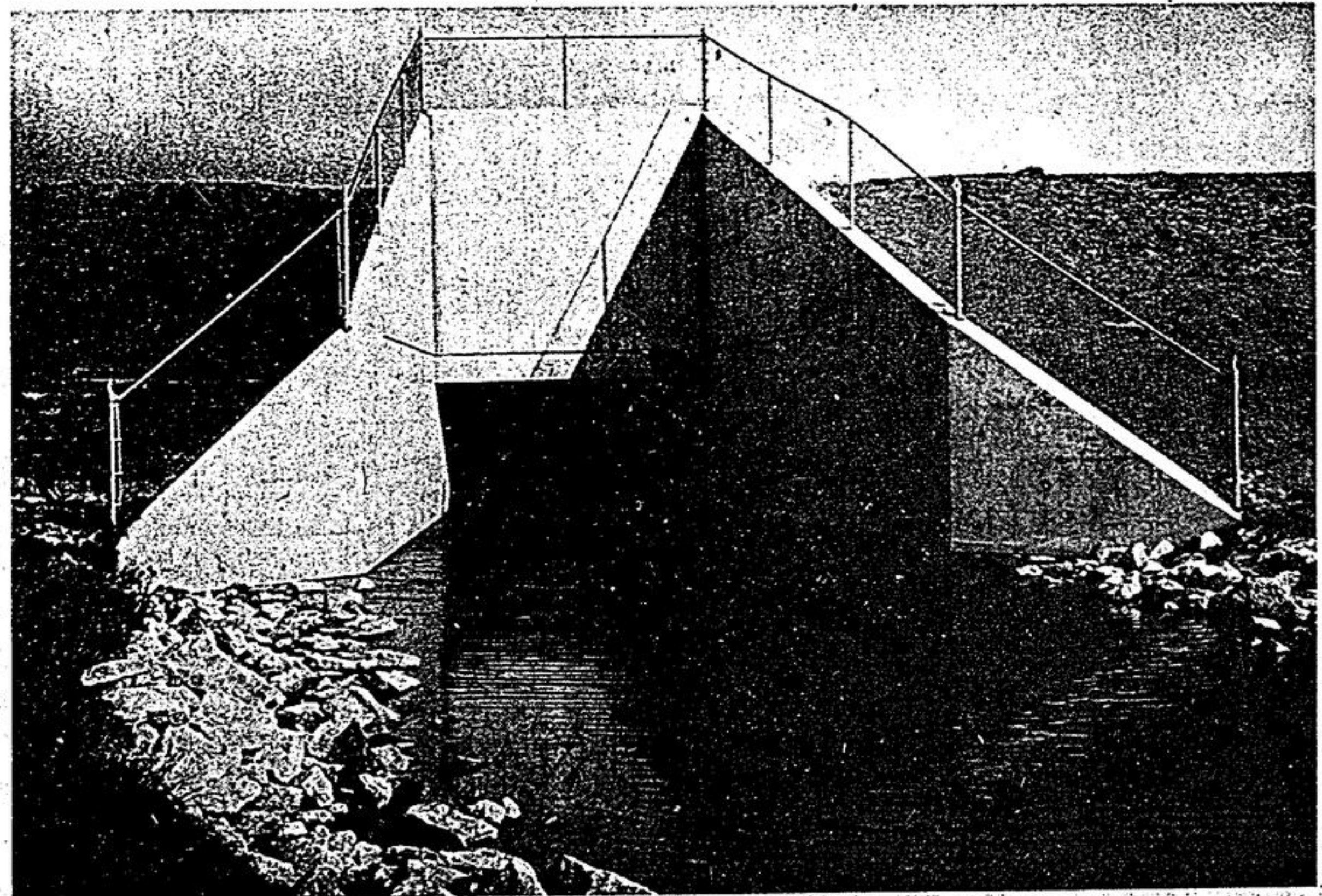


MRS. BLANCHE RUTLEDGE

Fall Hat Show

STOUFFVILLE — A standing room audience attended the show of fall hat fashions, sponsored by unit 2 of the Stouffville United Church Women. Models included—Mrs. Anita Snow, Mrs. Irene Slack, Mrs. Viola McCreight, Mrs. Maris Anderson, Mrs. Sheila McNeil and Mrs. Blanche Rutledge.

Door prize winners were Mrs. Elva Newmarch, Main Street East, a new chapeau and Mrs. Jackie Petrie, Edward Street, a hair style by Fiesta Hair Design. Other winners were—Mrs. Hazel Waite, Mrs. Beulah King, Mrs. Sandra Fraser, Mrs. Isabel Evans, Mrs. Leona Atkinson, Mrs. Dorothy Wagg, Miss Ida Lehman



Stouffville's new \$300,000 flood-control dam, to be officially opened, Saturday. —Jas. Thomas

New conservation dam fifth on town stream

STOUFFVILLE — The opening of Stouffville's new \$300,000 flood-control dam, Saturday, is an historic occasion in the life of the community.

But projects of this kind are not entirely new here. History reveals that four similar structures were once located within the village, dating back more than 80 years. Three were utilized for commercial purposes and one created a farm pond.

In the late 1880's, Wheeler's saw-mill operated on the site of the present postoffice. Water was supplied from a pond immediately opposite the present Stouffville Machine and Tool Works.

South of the new dam was the Stouffer farm pond and to the north, in

what was then a heavily wooded area, the Bartholomew family also operated a saw-mill. Another business of this kind operated on the Jonas Boyer farm east of the Bruce Harper property. This pond served as a winter recreation spot for Stouffville young people, long after the mill closed.

Saturday's program, to begin at 11 a.m., will include a 90-voice choir from St. Mark's, Orchard Park and Summitview schools, under the direction of Mr. Lorne Boardway. A brief address will be delivered by Dr. G. Ross Lord, Chairman of the Metropolitan Toronto and Region Conservation Authority with greetings from C. R. Purcell, Advisory Board Chairman

and Stouffville Reeve Ken Laushway.

Invocation will be pronounced by Rev. J. L. Carder, Stouffville United Church.

The Master of Ceremonies is R. G. Henderson, Chairman of the Flood Control and Water Conservation Advisory Board.

Visitors to the site will enter by way of Edward Street with parking facilities at the high school. The public, particularly residents of Stouffville, are invited.

Refreshments will be served in the school cafeteria.

Horse dies on track

MARKHAM — An inquiry has been ordered into the collision between two sulkies at Markham Fair, Saturday, that sent one driver to hospital and caused the death of his horse.

Wilf Mawson, 59, of R.R. 2, Pefferlaw was thrown onto the track by the impact that broke his horse's leg. When the animal fell, it broke its neck.

Stouffville property owners and business proprietors

By this time you have received your Notice of Assessment for 1970. The basis of assessing for 1970 is "FAIR MARKET VALUE". From looking at the Assessment Roll it would appear that the average assessment increased approximately 5 times. This in theory should mean that the mill rate, if 100 this year, would be 20 in 1970 and with no increase in the mill rate for the year 1970, the taxes payable should be the same in 1970 as in 1969.

There may be instances where in the opinion of the Assessor, the lands and/or the buildings may have been under assessed, in which case your assessment on either land or buildings may be increased by 6, 7 or 10 times. There could be an error in your assessment, and if not appealed within the time stated, nothing can be done to rectify same. If this is the case, you should sign your Notice of Assessment at the bottom and return same to the Assessment Commissioner, 64 Bayview Avenue, Newmarket, on or before October 14, 1969.

W. G. Parsons, Deputy Reeve

Wrecking yard sold for \$60,000

STOUFFVILLE — The site of Stouffville Auto Wreckers, Stouffer Street, has been sold.

The reported price for the property is \$60,000. The operator is Albert Pollack, Toronto.

Mr. Pollack is now moving the contents of the yard to another area.

The new owner is Ar-jel Developments Limited, Finch Avenue.

The site, that could accommodate nine residential lots, may be utilized as the location for a medium-rise apartment.

Municipal office flooded with calls

STOUFFVILLE — If individual assessments have not increased by more than five times the figure of 1968, owners have not cause for concern, clerk Ralph Corner explained this week.

He admitted that his office had been flooded with calls from residents and business people who viewed their assessment notices with alarm.

He pointed out that an average home previously assessed for \$4,000 would now be up to about \$20,000. Mr. Corner said that increases less than 5 times could mean a reduction in taxes. If it is over 5 times, taxes will likely be up.

Under the new system, 1 mill in Stouffville will raise \$30,000. Under the old system, 1 mill totalled \$5,400.

Stouffville's tax rate in 1969 (residential) was 113 mills. With no rate increase in 1970, it would be 23.5.

Mr. Corner said that under the County reassessment program, there were bound to be some discrepancies. He estimated however, that 80% would be correct.

Appeals must be filed with the County Assessment Commissioner on or before Oct. 14.



PRINCIPAL
Mr. Terry Gray is principal of the new Highlands Public School in Whitchurch Township. The building was opened for regular instruction, Monday with an enrollment of 470 students.

Accident free record

STOUFFVILLE — The Stouffville plant of Consolidated Sand and Gravel Limited has established an accident-free record that now extends over a period of one year.

There are 35 employees. The operation is located on the Bloomington Road between concessions 5 and 6, Whitchurch Township.

No individual is more proud of the feat than company foreman, Don Peart. He explains it this way: "Everyone is conscious of safety and what precautions are required to maintain it. It's a concentrated effort at all levels; from management right down".

Landowners organize mass appeal

VANDORF — At an emergency meeting called by York County Federation of Agriculture Monday, landowners voted in favor of a mass appeal against new assessment rates.

Residents, mainly farmers, filled the Vandorf hall past capacity, with dozens of spectators jammed into the lobby and basement.

Frank Brumwell, Victoria Square, served as chairman.

The meeting voted by resolution to join the Scarboro Farmers Protection Group, with each member paying a \$10 fee to engage an attorney.

According to Merlyn Baker, most farmers favor a system in which land is assessed in relation to its productivity, rather than market value.

Assessment for residences has risen 4 to 5 times on the average, while farm land has gone up more than ten times. Rural property not used for farming purposes has an increased assessment of from 20 to 30 times. This property includes many 25 acre residential lots. One man faces a huge increase on his land, the greatest part of which he described as swamp.

Developers bid for Fair grounds

MARKHAM — The Markham Fair is located on the largest and most valuable lot in town — a site that includes close to 40 acres.

This week it was learned that several would-be developers had approached directors concerning the possibility of its sale, but there is no indication that the Board is even remotely interested.

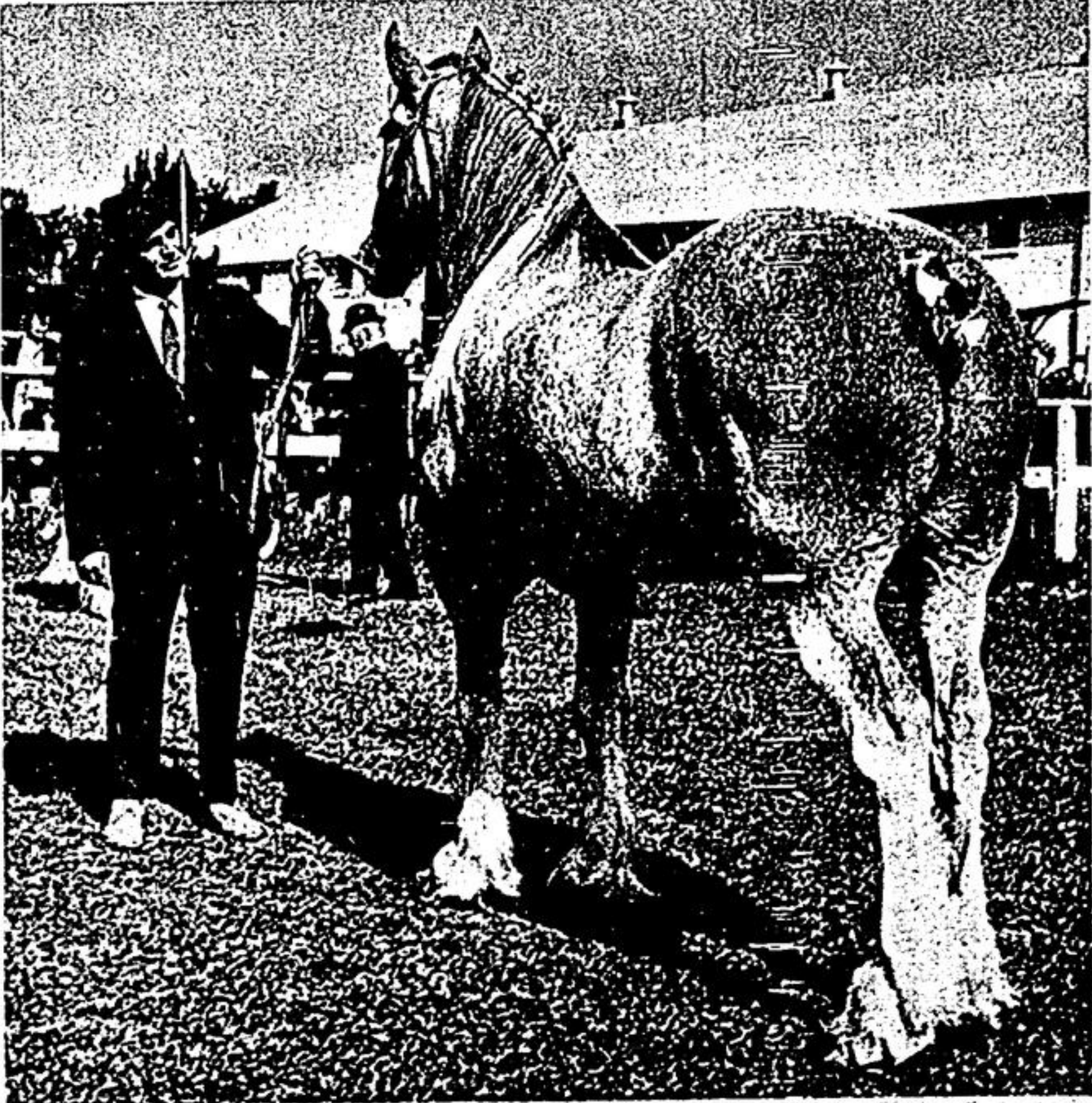
President Charles Reeve when contacted by The Tribune, admitted that "overtures" had been made but was quick to point out that nothing concrete was discussed. "It would mean the end of the fair," he said, "I don't think the town would stand for it".

In commenting on the Fair just concluded, Mr. Reeve agreed it was a tremendous success all way round. The total attendance has been estimated at over 25,000 with more than 10,000 checking through the turnstiles Sunday. He noted that even with inclement weather on Thursday, the crowd exceeded previous years.

While suggesting it would be unfair to select one part of the show over another, the president agreed that 'Old McDonald's Farm' had proved one of the biggest attractions. He said next year it was planned to increase the numbers of animals in the building. He noted that the Pony Party, Friday, had 45 entries.

In commenting on the lack of parking space, Mr. Reeve said this had posed a problem for years. "When additional land was available, the Board lacked the money and now that we have a little in the bank, the price is exorbitant," he said. He noted that wherever large crowds gather, parking is at a premium — even the C.N.E.

The executive and directors will meet later this month to assess the success of Markham Fair — 1969 and discuss plans for 1970.



The heavy horse class at Markham Fair, continues to be a top attraction. This Clydesdale beauty is shown by Gordon Lewis of Cashel, Markham Township. —Jas. Thomas

New Highlands School Open class plan

WHITCHURCH TWP. — Whitchurch Highlands School has opened its doors to 470 students.

The building, unmatched in the area, is located at the intersection of conc. 5 and the Bloomington Road.

The staff includes 18 teachers. The principal is Mr. Terry Gray.

The school operates on an open, ungraded system. Children are not assigned to specific classes or grades but rather are allowed to progress at their own speed. They are accommodated in six large work areas, called 'pods'. Three teachers are in each 'pod'. There are no formal classrooms.

With the exception of the gymnasium, the entire interior is completely carpeted.

The school contains a large resource centre from which students may select books, magazines, newspapers and other audio-visual materials.

A closed circuit television unit and portable filming equipment will allow teachers to produce their own T.V. programs.

Pupils are assigned to progress levels in each subject through comprehensive testing. In this way, no one fails but rather progresses at his own rate. A child may take Mathematics at the old Grade 1 level and at the same time be reading at level of old Grade 3. Through this method, it is hoped that students will not become bored with subjects in which they excel or discouraged in those in which they do poorly.

According to tests, this unstructured system has a much lower drop-out level than the previously accepted structured program.

An official opening is planned for Nov. 27.