

Begin construction in 1971 of new Claremont by-pass road

\$1 million project

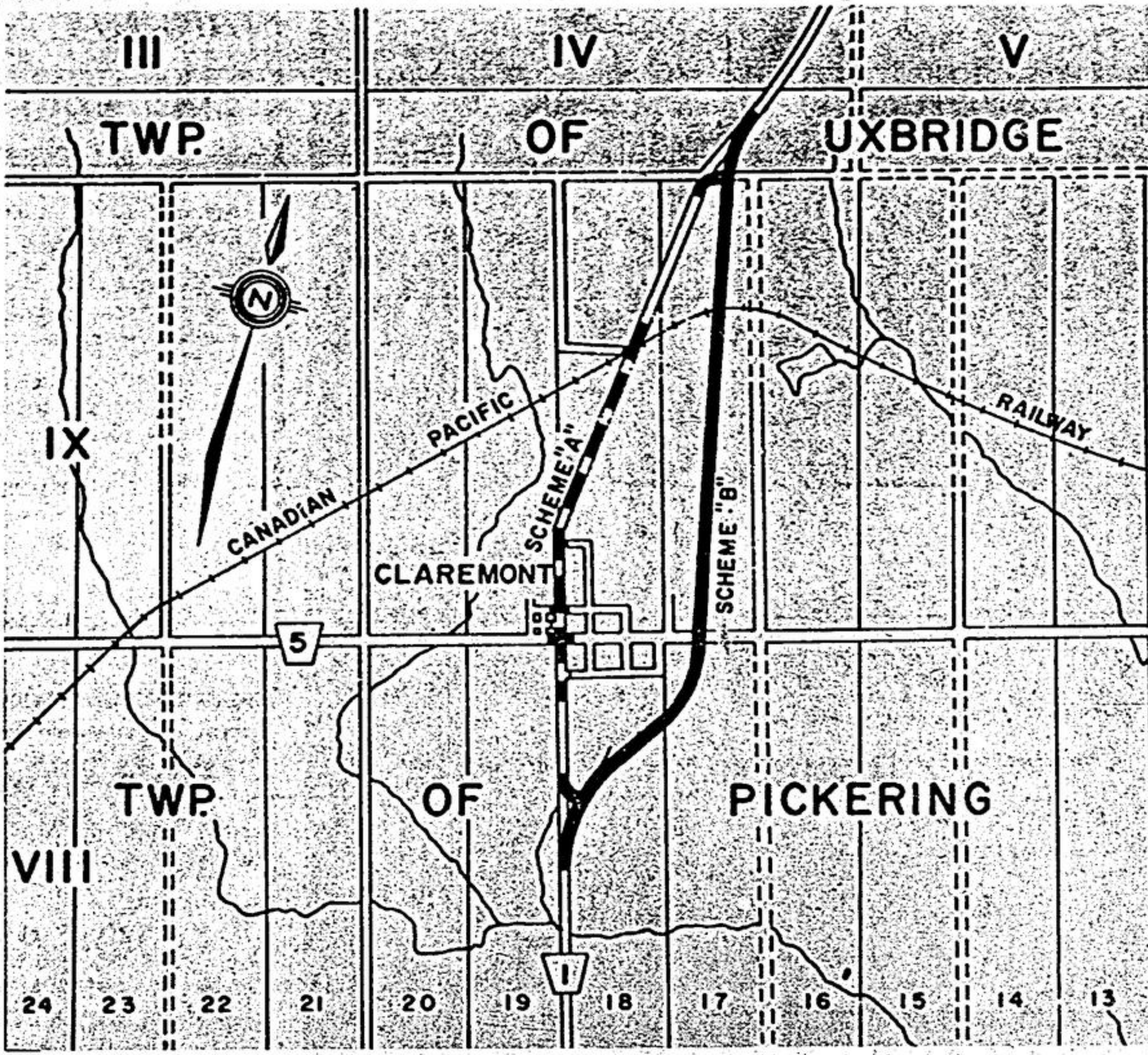
CLAREMONT — Ontario County Council has approved the construction of a 1,021,450 two-lane bypass road, to skirt the easterly edge of Claremont, from a point 2,000 feet south of the village, re-joining conc. 5 at the Pickering-Uxbridge townline.

Harry Rammler of the County engineering department said that while ratification of the project is still required from the Department of Highways, he anticipates no problem in this regard.

Work, expected to begin in 1970 will include the purchase of properties, relocation of utilities and clearing of land. Actual construction will likely start in 1971 with an overpass to be built at the site of the C.N.R. line.

Mr. Rammler said that due to the magnitude of the venture, it could not be completed in one year. The entire cost will not be borne by the County, however. In fact, its share will be reduced to about \$250,000. Financial subsidies will come from the Railway Transport Commission, \$444,800; Canadian Pacific Railway, \$28,800; Dept. of Highways, \$296,895 and others, \$500.

The bypass route is one of two plans that had been recommended for the area, Mr. Rammler said. To widen the existing Brock Road through the centre of Claremont, a shorter distance (1.2 miles) would have been cheaper (\$1,148,300) but highly impractical since so many properties extend up to and over the



A map, drawn to scale, shows the plan of the new bypass road to skirt the village of Claremont. Work on the project will begin next year with actual construction to start in 1971.

road allowance. "Besides," Mr. Rammler said, "we hated to remove all those lovely trees".

While through-traffic will be removed from the village itself, Claremont residents will benefit in an-

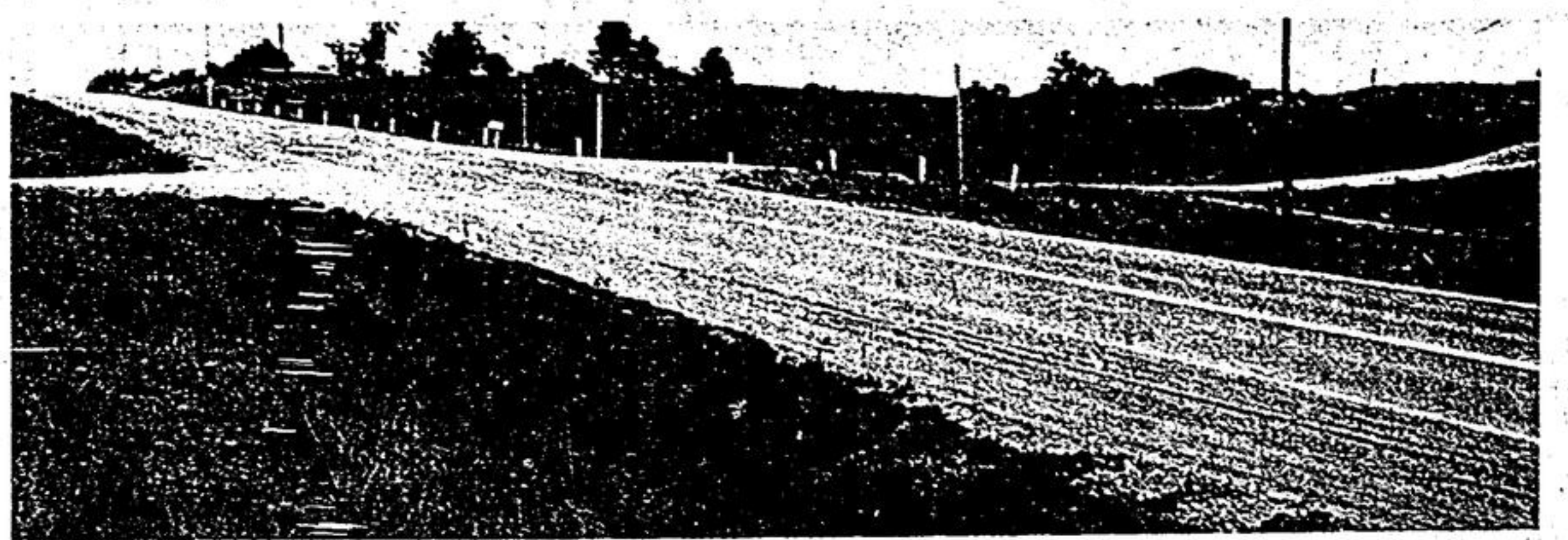
other way. The present Brock Road will be improved to the satisfaction of County engineers and handed back to Pickering Township. Mr. Rammler anticipates no problem with regard to traffic flow

while construction is underway. He noted however, that some slight inconvenience may be experienced when the new bypass is linked up with the Brock Road, north and south of the village.

Adequate signs will be erected to inform motorists of the correct route to reach the business area of the Claremont community, Mr. Rammler concluded.



The bypass road will swing to the east from a point 2,000 feet south of Claremont. —Harry Hooper



The bypass will rejoin the Brock Road near the intersection of the Uxbridge-Pickering townline, north of Claremont. —Harry Hooper

Aerial map

MARKHAM—An aerial map of Markham, has been presented to the Town Council by the legal firm of Mingay and Shibley, Main Street.

Paul Mingay and J. T. Shibley attended a meeting Monday and made the presentation at that time. The photo, printed to a scale of 500 feet to the inch, will hang in the council chambers.

Perhaps a time will come when a satellite city should be built north-east of Toronto, but that will be after the Ontario Government designates a region, guarantees road and commuter service, and the financing necessary for its success.

It is unbelievable that the people of Uxbridge would want to place their future in the insecure hands of Revenue Properties, without Provincial backed guarantees.

L. D. Almack,
R.R. 2, Claremont

Editor's Note: As we stated previously in reply to a similar letter, The Tribune has not given editorial support to mass residential buildup as may be proposed in Century City. We do however, argue in favor of all the beneficial industrial assessment that can be coaxed into the municipality. Century City, in our opinion, is a separate issue.

Editor's mail

Commend 'go steady' policy of Uxbridge council

Dear Sir: I am appalled at the support you are giving to the Revenue Properties—Century City promotion. It is however heartening to see that the Uxbridge Council

are demonstrating mature judgement and insight by requiring more information and study of this project. The people of Uxbridge and their neighbors will probably never know

how much they owe their representatives.

The Province of Ontario has under review various alternative regional plans. These have been submitted to municipalities for discussion. Satellite cities, rigid rural-agricultural zoning, transportation corridors and industrial zoning are all included. While the province has asked for submissions and discussion, could its Municipal Board, in advance of an official plan, allow Century City? Not likely! Could the official plan include Century City? If it did, I am sure questions of information leakage would be suggested by an active Official Opposition.

But suppose Revenue Properties are lucky or persuasive and obtain approval. What have the present residents of Uxbridge to gain from the urban development of their township? Perhaps employment

would be available for a few who had the necessary new skills. Some local business would prosper. New industries could provide assessment.

But the disadvantages seem to far outweigh the advantages. Small business lacking capital to expand could not compete with the giants in the new mass market.

Industrial assessment would not keep pace with residential building. Why would major industries, considering sound manufacturing management principles, locate in Uxbridge Township? Are there great supplies of water, minerals, skilled labour, cheap transportation, or excellent communications? Uxbridge is not nearly as well endowed as Pickering when judged by plant location criteria, and Pickering has found attracting industry a very difficult problem. One in-

dustry which is captive to the developer will not provide assessment for a city. Higher taxes would be inevitable. Schools, roads, sewers, incinerators, civic buildings, and staff require money. Every resident within miles could expect to re-drill his well every few years as the water table dropped. Clean streams and ponds would be of the past due to reduced flow and added pollution.

Our already over-crowded road network leading to the area would be hopelessly congested. Perhaps a bypass road around Stouffville would relieve the congestion, and the Stouffville merchants of their customers.

The artist's imagination illustrates beautiful trees, lakes, and mansions, but are these the realities of a new subdivision? If Century City threatens bankruptcy with the project incomplete, who picks up the tab? When they are in trouble, will they appeal for cheaper construction, high density, housing, or aid from present ratepayers? The rural residents of Pickering have been shown the folly of urban development rather dramatically by the recent assessment on their properties.

PRENATAL CLASSES
FOR
EXPECTANT MOTHERS

A course of weekly classes beginning in Richmond Hill, 7 October, 1969, and Newmarket, 9 October, 1969, at 7:30 p.m. in hygiene of pregnancy, how baby grows, food for the family, feeding the baby, the hospital stay, and other subjects of importance to the expectant mother.

Fathers are invited to attend the first and eighth classes.

REGISTRATION NOW BEING ACCEPTED AT
YORK-OSHAWA DISTRICT HEALTH UNIT

Richmond Hill, 129 Church Street — 884-1133
Newmarket, 22 Prospect Street — 895-4511
Stouffville, Main Street — 640-1334
Sutton, High Street — 722-3371

GET YOUR **CAR** READY FOR WINTER NOW

with an application of **UNDA SPRAY**

STOP HERE FOR VALUE!

CALL 640-3450 and Make An APPOINTMENT

DON'T FORGET... WE HAVE THE LATEST EQUIPMENT TO GIVE YOUR CAR A COMPLETE TUNE-UP

NEIL **PATRICK MOTORS** Ltd.
MAIN WEST — STOUFFVILLE

Unda Spray is a special grease formula specifically manufactured to help prevent your car from rusting. It's use is recommended by large fleet accounts. Try it... you'll appreciate its value.

How your Texaco home team beats the winter cold.

This is a new Texaco Forced Warm Air Furnace. It is designed to ensure the complete combustion of every drop of oil. So you get maximum heat at minimum cost. Especially since oil costs you less than other fuels in the first place.

Choose from several models. All are fully guaranteed, and available on long, easy term payment plans. If you need one, let's talk about it. We'll see that you always have the home comfort you desire. Day and Night.

Our teamwork keeps the heat on.

DON SHANK FUELS
243 MAIN ST. N., MARKHAM, ONTARIO
PHONE: 294-1600

TEXACO HOME COMFORT

Garden Supplies
Loam, manure, compost and our 3 Star Mix.

Williamson Bros.
297-2087

WRAP

up more home protection in one package at less cost with our Homeowners Policy. Call today!

STATE FARM INSURANCE

Call Kenneth A. Shepherd
7th Line
Box 44, Markham
Telephone 294-1562
State Farm Fire and Casualty Company
Canadian Head Office, Scarborough, Ont.

St. Patrick's C.C.M. and North York Knights of Columbus

TUESDAY, SEPT. 30th., 1969

Tam O'Shanter Golf Club
SHEPPARD AVENUE AND KENNEDY ROAD

ADMISSION \$5.00

ENTITLES YOU TO
1 CAR GAME — NEW 1969 PONTIAC
OR CASH \$2,750.00

1 - \$500.00 GAME
4 - \$150.00 GAMES
14 - \$75.00 GAMES

EXTRAS AT REASONABLE PRICES

DOORS OPEN 6 P.M. — REGULARS AT 7:50 P.M.
OTHER BIG SPECIALS DURING EVENING

WORTH \$3200.00

Door Prize for a 25" Colour TV