

Rot hits tree farms

A relatively new disease in Canada, *Fomes annosus*, which causes the rotting of tree roots about five years after thinning operations, is infecting coniferous plantations in southern Ontario.

The fungus enters through the surface of freshly cut stumps, and from there the decay moves through the root system attached to the stump and enters living, healthy trees through natural root grafts. Tree mortality spreads outward from the infection centre like the ripples on a pool.

September and October are the highest risk months for infection of freshly cut stumps when large numbers of spores are in the air. But because infection is possible any month of the year and under a wide range of climatic conditions, all stumps should be treated as soon after cutting as possible. Early prevention is indicated not later than 30 minutes after cutting because the longer the delay, the greater chance of infection which treatment cannot destroy. The following treatment, applied to freshly cut stumps, has been successful through-



Nutrient Feed & Supply Ltd., new retail outlet

Pictured above is the new retail outlet for Nutrient Feed & Supply Ltd., 82 Kingston Road, Pickering Village. The company, headed by Mr. James Quinn and Mr. James O'Donnell, handles the extensive line of Ralston Purina products, other complementary lines plus complete English and Western riding equipment and Bolens Lawn & Garden tractors.

out the Province:

A 10 per cent solution (1 pound per gallon) of sodium nitrite in water is recommended. It should be applied to stumps with a brush, swab or sprayer until the entire cut surface is thoroughly saturated. Under severe winter conditions, the freezing point of this solution (around 20°F.) may be lowered to -5°F. by increasing the

concentration of sodium nitrite to 40 per cent. However, a freezing point close to -10°F. may be achieved more cheaply by using 15 per cent sodium nitrite (1½ pounds per gallon) and adding 2½ pounds of common salt (NaCl) per gallon. It is necessary to colour the solution so that treatment may be checked. This can be done by dissolving one level teaspoon-

ful (approx. 2 grams) of Thodamine B Extra per

gallon of solution. Beware of using other dyes since many, such as Malachite green and Thalo blue, interfere with the action of nitrite.

prevention of *Fomes annosus*, control of an existing outbreak, modern management techniques, and markers for plantation and woodlot products, contact your nearest lands and forests office.

For assistance on the

TYPEWRITERS

and

ADDERS

repairs & rentals

TRIBUNE

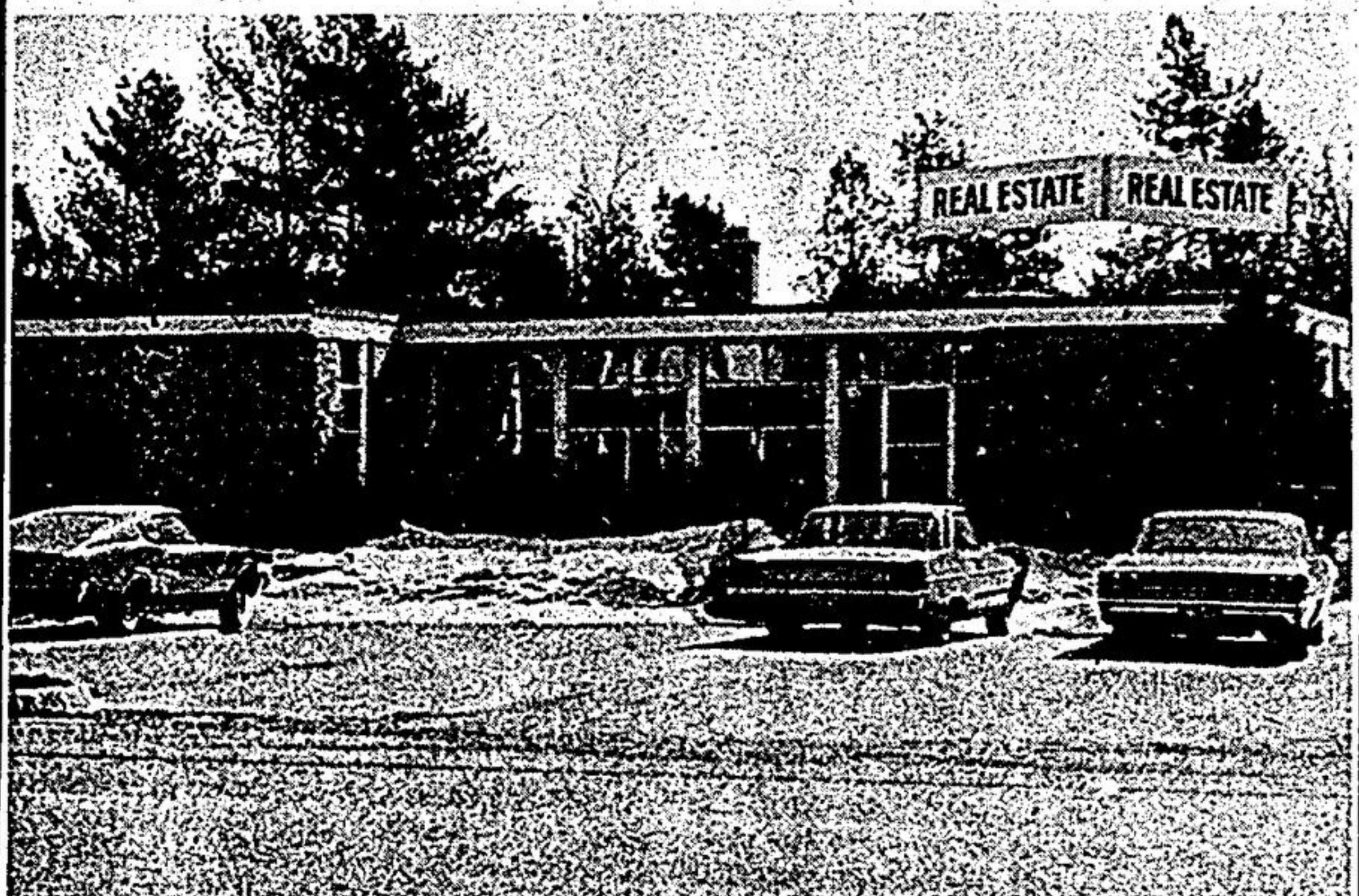
Office Supply

MIHOREAN & DAHL-JENSEN LTD.

REAL ESTATE

NO. 7 HIGHWAY AT UNIONVILLE

PHONE 297-1777

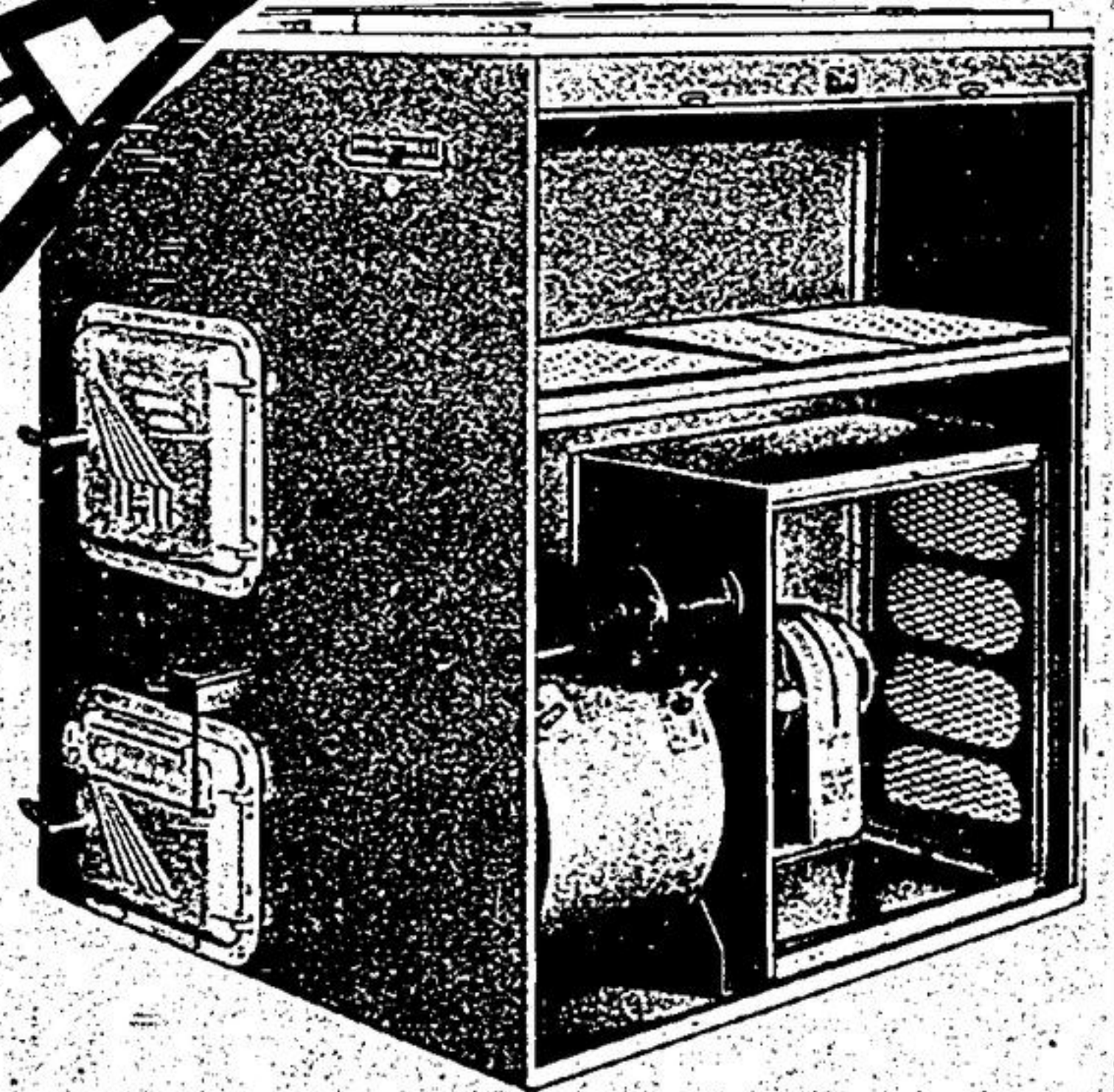


Mihorean Dahl-Jansen Ltd., located just west of Kennedy Road on Hwy. 7, in Unionville.

LEADERS IN THE SELLING OF FARMS — HOMES — ESTATES



FUEL IS NO PROBLEM WITH THIS FURNACE!



THE DUO-HEET COMBINATION

WILL BURN OIL * COAL * WOOD

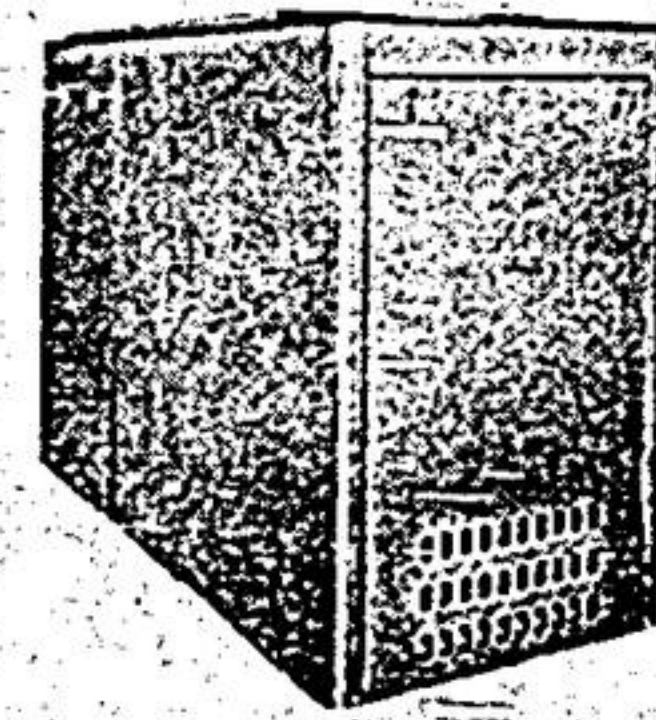
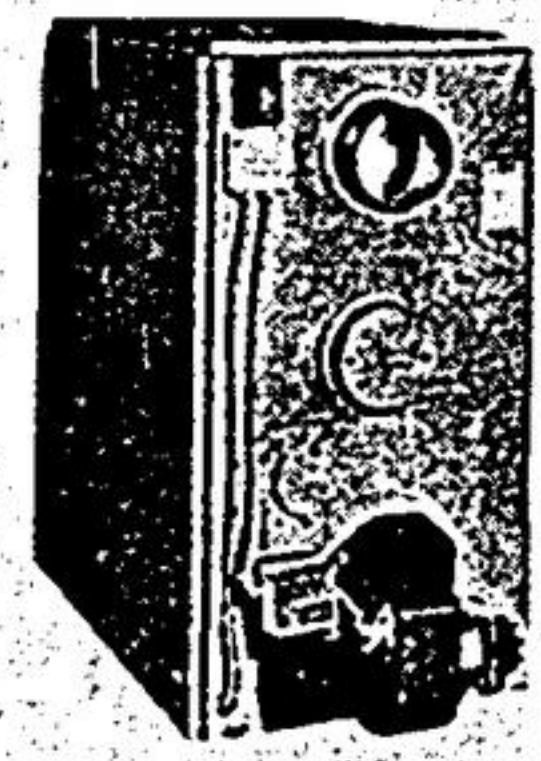
You'll never be cold again! Here is the perfect furnace for rural areas that are subject to heavy snowfall, blocked roads, power failures due to falling trees, ice conditions and floods, etc. Regardless of the weather, the DUO-HEET will produce constant, continuous heat.

The DUO-HEET Combination is the only fully approved unit of its kind available today. It burns wood, coal, oil or trash. It is thermostatically controlled. When wood or other solid fuel burns out, oil automatically takes over. When electricity or oil supply fails, you simply stoke it with wood, coal or trash.

Let it snow, hail and blow the wires down. Let the roads become plugged with drifts . . . who cares? You will be kept comfortable and warm by your DUO-HEET Combination furnace.

Of course, if you prefer a straight oil burning furnace, we have them too — in sizes to suit the smallest bungalow or largest farmhouse.

Ask to see these beauties!



CALL :
J. S. TAYLOR
 HEATING CONTRACTORS
 R.R.2, Stouffville
 640-1908