

The Tribune

VOL. 79 NO. 50 STOUFFVILLE-MARKHAM-UXBRIDGE, ONT. THURSDAY, MAY 9, 1968 10 CENTS

Approve industrial aid

STOUFFVILLE — The Provincial Government has selected the Village of Stouffville as one of only three municipalities in the County of York to qualify for assistance under the new Equalization of Industrial Opportunity program.

This means that interest-free loans will be made available to industrial firms that locate here. When the company has operated successfully at its chosen location for a period of six years, the loan is forgiven. Approved additions to existing facilities may also be eligible for similar grants.

In York County, Sutton and Whitchurch Township are the only other areas to qualify.

The announcement of the good news was made at a meeting of council, May 2.

All applications must be processed through the Provincial Industrial Corporation.

Reeve Ken Laushway said that Stouffville had approximately 50 acres that could be utilized as industrial sites. He said that thirty acres was adjacent to services on Main Street West. He said that his personal preference was toward firms that could employ up to 50 persons.

The reeve noted that several inquiries had already been received. He agreed that the town's industrial commission would be completely reorganized to cope with applications as they come through.

The Provincial government has established a \$10 million budget for this program. Forty per cent of this sum has already been committed.

Merger opposed by reeve

STOUFFVILLE — Any proposal to include Stouffville in a regional unit with Woodbridge, Markham Village, Markham Township, Vaughan Township and Richmond Hill, has brought opposition from Reeve Ken Laushway.

A recommendation approving the merger was passed at a meeting Apr. 29. Only two municipalities, Vaughan and Richmond Hill were represented.

Reeve Laushway said that while the trend was

toward a regional type of government, he felt that the area within the southern six was too small. He said too, that problems pertaining to the more urbanized municipalities to the south were not the same as in Stouffville. "If they (Richmond Hill and Vaughan) keep complaining long enough, they'll find themselves part of Metro," he said.

Mr. Laushway said that Stouffville might have been represented at the meeting but the notice did not arrive in time.

What goes up will come down

WHITCHURCH TWP. — For municipal taxes to go up by \$50 and then decrease by a like amount, all in the same year, is an unusual occurrence. This could happen in Whitchurch Township with approval of the Provincial Government's proposed equalization factor. The legislation, awaiting its third reading, will allow the Province to pay the taxes on the first \$2,000 of equalized assessment.

Clerk Thos. Kerr, told The Tribune that the implementation of this legislation would wipe out increases on the average properties. The overall rate is up almost 9 mills. The 1968 budget require-

ment to be raised by taxes is \$1,138,099.22. The residential rate is 31.87 mills. The commercial rate is 36.24 mills.

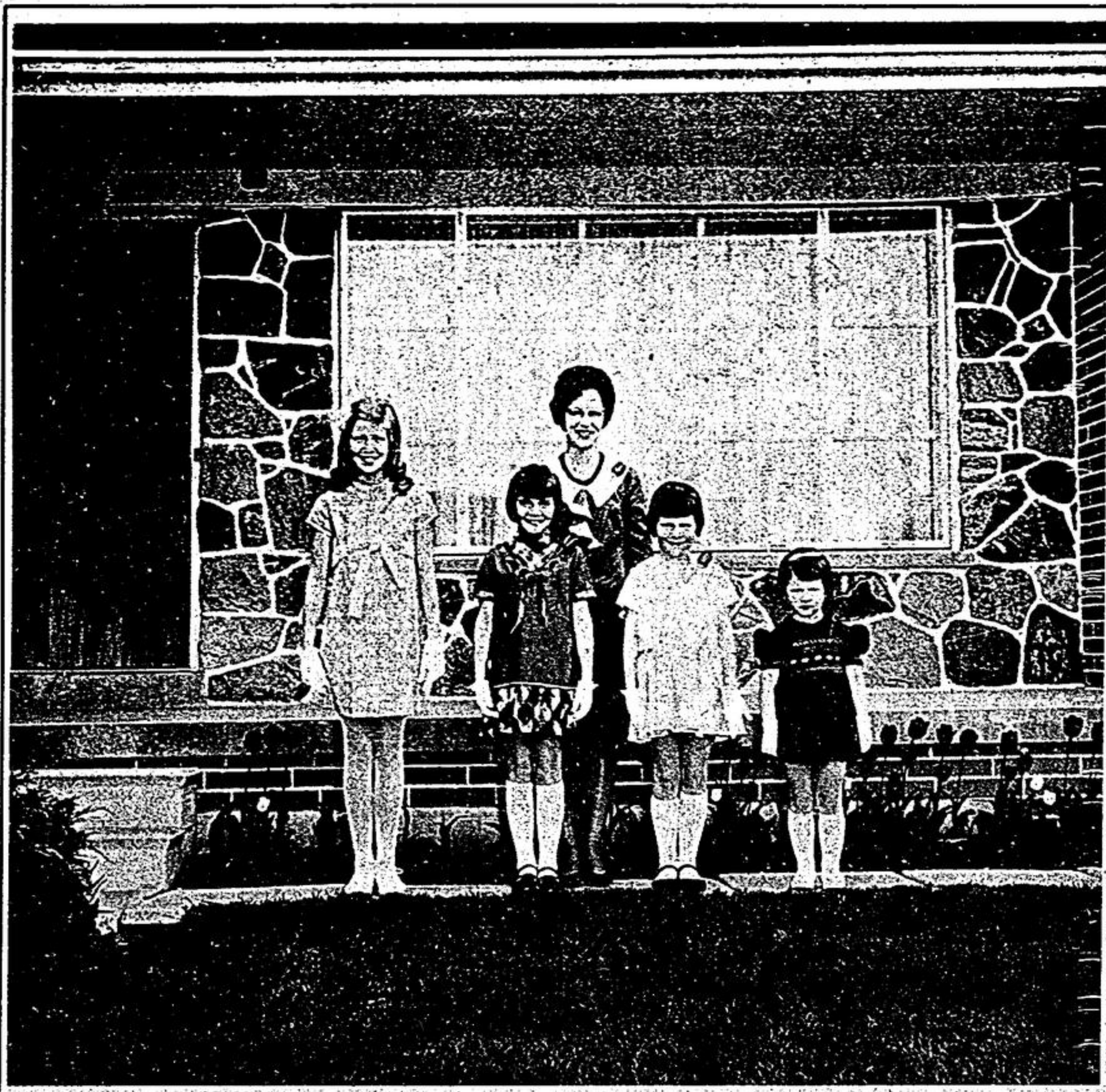
A breakdown of certain expenditures for the year includes: welfare, \$180,000; police, \$144,000; fire, \$19,000; dog control, \$3,500 and education, \$619,618.78.

Ten acre lots

PICKERING TWP. — Provincial legislation has been passed to lift its control of ten-acre lots in Ontario. From now on, all land separation will be controlled by municipal committees of adjustment.

Each entry will commit himself to contribute a certain sum of money for every mile walked. Rather than take on this chore, he may also sponsor a walker on his behalf. For example, if the entry pledges \$100 per mile and walks 20 miles, then he pays \$20.

The competition is open to public, separate and high school students as well as adults. Registration forms are now available. Further information on the contest may be obtained from Peter Scott (297-1123); Ruth Hill (297-



Mothers' day, fifty-two weeks of every year

Sunday, May 12 is Mothers' Day and certainly there is no more typical mother and daughter family unit than Mrs. Douglas Ward and children (l. to r.) Lorraine, 10, Lynn, 7, Sandra, 6 and Sheila, 3, of Glad Park Avenue, Stouffville. They were stopped by The Tribune Cameraman on their return from church. —Staff Photo

Marathon walk to raise funds

Help Union Villa

UNIONVILLE — A marathon walk in aid of "Union Villa" a planned home for senior citizens, will be held Saturday, May 25, starting from the Crosby Memorial Centre in Unionville.

The selected route travels north on conc. 6 to 16th Avenue, west to conc. 5 and north to the townline, east to conc. 7, south to 17th Avenue, east to Highway 48, south to Highway 7 and west to Unionville and the Memorial Centre. The entire distance is 20 miles.

This is how the fundraising campaign will work.

Each entry will commit himself to contribute a certain sum of money for every mile walked. Rather than take on this chore, he may also sponsor a walker on his behalf. For example, if the entry pledges \$100 per mile and walks 20 miles, then he pays \$20.

The competition is open to public, separate and high school students as well as adults. Registration forms are now available. Further information on the contest may be obtained from Peter Scott (297-1123); Ruth Hill (297-

Farm not sold

UXBRIDGE TWP. — In the May 1 issue of The Tribune, a story on rumored property sales in the Goodwood area of Uxbridge Township included the farm of Leslie Mitchell, conc. 2. It has since been learned that while one lot has been sold, the remainder of the land has in no way changed hands.

Injured

STOUFFVILLE — Dick Coffey, head of Coffey Motors, suffered a chipped bone in his leg after falling from a horse on his farm at Stouffville, R.R. 3.

Liberal nomination

YORK-SIMCOE — The York-Simcoe riding Liberal nomination meeting will be held May 14 at Huron Heights Secondary School, Davis Drive, Newmarket.

Two candidates have indicated their intentions to stand for nomination, Ellis Griffiths, 38, of Kleinburg and John Crawford Medcof, 37, of Mount Albert.

Elect executive

STOUFFVILLE — Ken Wagg has been named President of the Stouffville Lions Club for the year 1968-69. He will assume office in September and succeeds Don Huxtable to the post.

Other members of the new executive include: 1st vice president, Bill Duxbury; 2nd vice president, Ivan Harris; 3rd vice president, John Foulds; secretary, Howard Christie; assistant secretary, Don Hiles; treasurer, Cliff Aiken; assistant treasurer, Ed Reid; Lion tamer, Oliver Pellett; assistant, Lion tamer, Walt Richards; tail twister, Lorne Broadway; assistant tail twister, Frank Brock. Directors (1 year) are Bert Taylor and George Baker. (2 years) Bob Hammond and Ron Lee.



Centennial queen plus one at Markham high

It was the highlight of the social season at Markham Dist. High School, May 3 when pretty 17 year old Heather Day of Unionville, a Grade 13 student, was crowned May Prom Queen. Officiating at the crowning ceremony is the queen of '67, Eileen Winch of Markham. —Staff Photo

Centennial committee

MARKHAM — The Village of Markham will advance from one centennial celebration into another.

Like the majority of municipalities, they marked the 100th birthday of Confederation in 1967. In 1973, the village will celebrate its centennial year of incorporation.

A committee has been set up to plan this program. Members include: Arthur Bonner, (chairman); Mrs. Rosemary Oured (secretary) and three members, Joseph Assinick, Ronald McVey and Walter Grieve.

was 3 to 1 against both the erection of the shopping centre and accompanying town houses.

Vincent Reid of the Western Heritage firm argued that the development would accommodate more than 8,000 people and warrant the opening of a new shopping area. He denied that it would comprise a business drain on stores now operating. He also rejected the suggestion that the proposal was not in keeping with the Official Plan of the Village. He urged council to come to an early decision on the issue.

Reeve Alma Walker contended that the matter was of sufficient importance to require further discussion. "We must take everything into consideration," she said.

Markham Merchants

Oppose Shopping Plaza

MARKHAM — A third major shopping plaza is one too many as far as Markham merchants are concerned and they gave vent to their feelings in force at a regular meeting of council, Monday night.

Gerald Shibley, supported by an 83-name petition and a standing room only audience, urged members to reconsider a commercial development proposal for the area of Highway No. 7 and Wooten Way, east of Highway 48.

Mr. Shibley stated that any buildup of stores at this location would be contrary to the Official Plan of the Village and would constitute a financial drain on other business places already established. He charged that there were sufficient commercial outlets already to serve a population of from 16,000 to 20,000 people.

"Such a plan would constitute a final blow to many on Main Street," he said, "and also weaken the economic stability of others, already on the borderline. Why should they have to 'fold' because they must share the dollars with others in a new development? I can assure you there is strong feeling against this project and we ask you to wait for two or three years and then re-assess the situation at that time."

The development is part of a residential and commercial venture by Western Heritage Limited. Ian Hume, a plaza merchant and member of the Markham Chamber of Commerce, said that 99 letters had been sent out to residents of Sherwood Estates. He said that of the 35 replies, the result

Enforce fire bylaw

STOUFFVILLE — Fires caused through carelessness are becoming costly and the council, working in co-operation with the police department, intends to take steps to enforce its by-law. The problem will be discussed at a meeting Monday.

With the exception of covered incinerators, no resident may light a fire without first obtaining approval from either the Fire Chief or the Police department.

A conviction carries a maximum fine of \$50.

Approve salary schedule

WHITCHURCH TWP. — The Whitchurch Twp. Public School Area Board has reached a salary agreement with its teachers, effective Sept. 1, 1968.

The wage schedule extends from a minimum of \$4,900 to a maximum of \$11,000. The annual increase in category 1 is \$300. In categories 2, 3 and 4, the increase is \$400.

Fringe benefits include accumulative sick leave to a maximum of 200 days; 50 per cent share of hospital fees and medical insurance and full payment by the board of costs involved in moving a teacher from one school to another if a change in residence is required. A teacher will also be granted maternity leave on application but she must apply for reinstatement by March 15.

A trustee committee, appointed to approach graduates of Toronto Teachers' College, enjoyed success. Seven have been hired, all of Grade "A" and "B" standing. One of these is Mr. Clarion Hood of Lemonville, who will take over grades 7 and 8 at Ballantrae in September.

Tax refund-\$67,000

STOUFFVILLE — In the months ahead, Stouffville taxpayers will receive a property tax refund from the Province of Ontario in the amount of \$67,000.

Hard to believe? Well it's true. Under the requirements of the Ontario Residential Property Tax Reduction Act, 1968, each owner of a self-contained dwelling unit in Stouffville will be entitled to a tax refund of \$58.73.

For persons who pay their taxes in full or on or before June 1; they should deduct 1 per cent plus \$58.73 for each unit.

For persons who pay their taxes in two separate instalments, the reduction will be allowed on the November 1 payment. The amount of the refund (\$67,000) will be re-imbursed to the Village by the province.

Although the Act is still to receive its final reading, the chance of its defeat is unlikely.

Boy, 2, drowns in disposal vat

MARKHAM — A two year old boy drowned in an open farm disposal vat Tuesday, at the rear of a barn on the property of D.H.S. Ranch, Highway 48 and 18th Avenue, Markham Township. Glenn Brown, son of Mr. and Mrs. Harvey Brown, was pulled from the tank by Lorne Morgason of Ringwood but failed to respond to mouth-to-mouth resuscitation applied by Mr. Morgason and Mr. Brown. He was pronounced dead on arrival at Scarborough Centenary Hospital.

A search for the child was started after a younger brother returned to the house alone.

The outside tank measures approximately 50' by 35'. The depth of the vat where the boy fell in is about 4 1/2 feet.

Constable Richard Pike, summoned to the scene, praised the efforts of Mr. Morgason in attempting to revive the child. The victim's father is the farm manager.



New post

Rev. L. K. Sider, pastor of the Gormley United Missionary Church for the past eight years, will accept a new post in Hamilton after Sept. 1. He will be replaced by Rev. H. S. Hallman, former rector of Stouffville.

Curling club canvass

B. O. A. C.

WHITCHURCH TWP. — A champion Boxer dog travelled first class by B.O.A.C. from Malton to Johannesburg, South Africa this week, arriving at 3:30 a.m. Wednesday.

Jandaire's Justice of Peace, owned by Mrs. Suzanne Janda of Jandaire Kennels, R.R. 2; Stouffville was purchased for the sum of \$1,000. The air ticket charge was \$350.

WHITCHURCH TWP. — A door-to-door canvass will be conducted this month in Stouffville in an effort to obtain pledges in the amount of \$20,000 for a proposed community curling rink. If this goal can be reached, it will give the executive sufficient financial support to assure an immediate start on construction. Pledges of \$20,000 are already on hand from earlier commitments.

Look ma - no wheels!

DICKSON'S HILL — While police, firemen, ambulance crews and spectators stood by, a 27 year old experienced pilot brought his Navion 4-seater private plane in for a perfect crash landing at the Toronto-Markham airport, Highway 48, Monday night.

Helmut Lang and Jan Lewandowski climbed out of the single-engined craft unhurt and less excited than those on the ground. Damage to the plane was estimated at about \$100. The pair approached the runway for a normal set-

down when the pilot realized that the mechanism in the retractable landing gear had seized. He had no alternative but to bring it in on its belly.

Firemen were prepared to soap down the strip with a foam "cushion" but this was not needed. The craft skidded along on the grass for about 50 feet.

"A pilot has to know what he's doing," admitted Mr. Lewandowski, "it can be tricky." He said that under such circumstances, a craft can very easily flip over if the nose is too far forward.

Whitchurch T. S. A.

Budget up \$93,000

WHITCHURCH TWP. — The cost of public school education in Whitchurch Township continues its increase. This year, the budget for 1968, less a \$63,000 surplus and a \$326,000 provincial grant, totals \$288,727.00. In 1967 it was \$195,557.00 for an increase of \$93,170.00.

The largest single expenditure is for cost of instruction at \$375,950.00. This is up by almost \$86,000. The staff numbers 54.

A breakdown of other expenditures includes: supplies \$49,396. up from \$35,000; administration \$26,648. up from \$26,000; plant operation \$73,761. up from \$40,000.; transportation \$70,600. up from \$55,000.; capital outlay from current funds \$16,000 and debenture payments \$52,864.89.

The total estimated cost for the year is \$677,969.89.