

The Tribune Goes Offset

STOUFFVILLE — The Tribune has made the switch to offset.

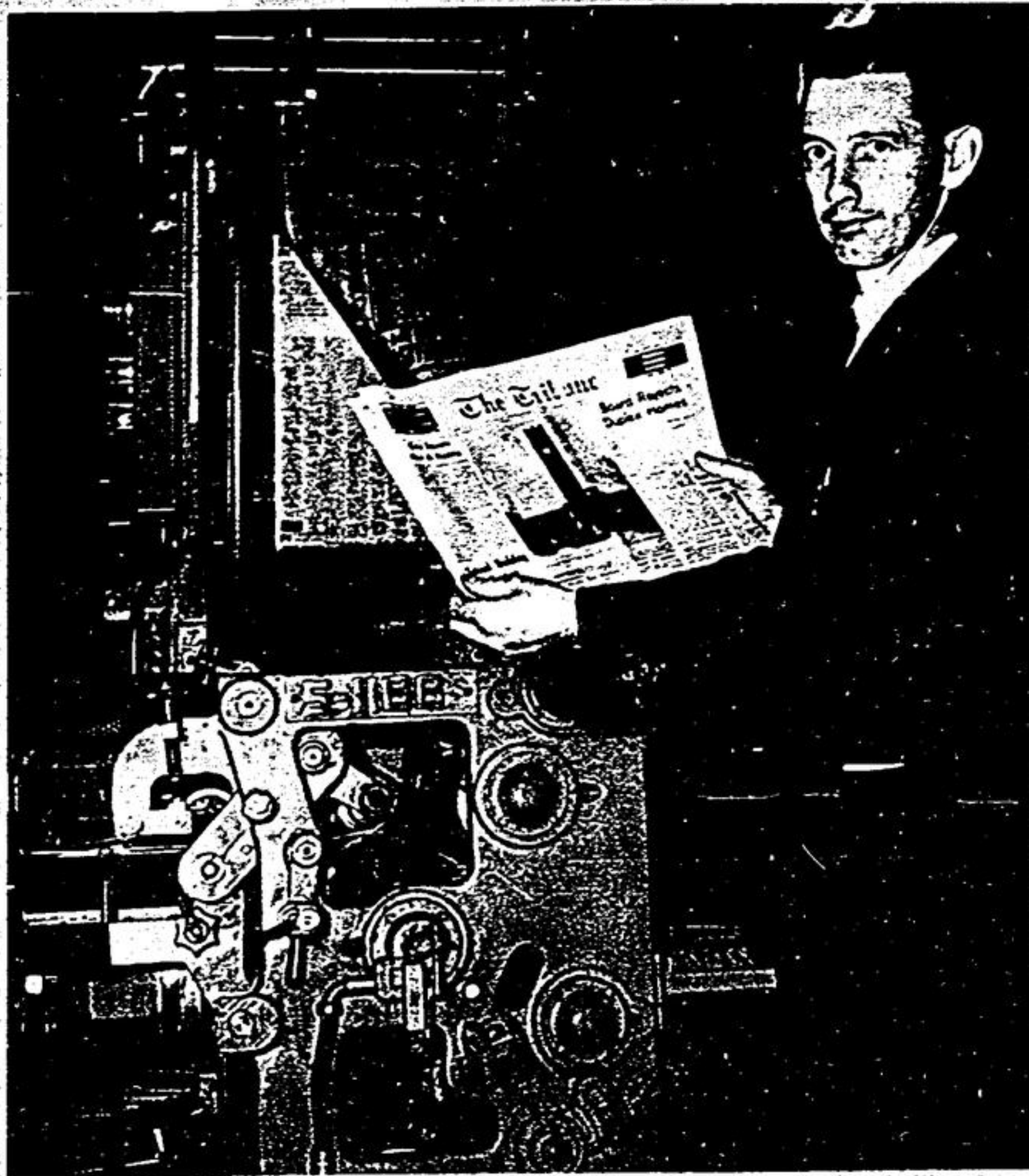
The first issue was produced last week and from all reports, readers are very pleased with the change.

All makeup work is done at The Tribune plant here in Stouffville. The press work is completed at a new plant site in Bramalea.

In an effort to make a press deadline, all display advertising must be submitted not later than Monday afternoon at 5 p.m., beginning Nov. 2. The deadline for classified ads will be 12 noon on Tuesday.

There will be no change in the publishing date and, if possible, store deliveries every Wednesday evening will be continued here in Stouffville as well as some outlets in the Markham - Unionville area.

The Tribune plans to increase its use of pictures since the re-production of photos is considerably improved over the letterpress process used previously.



The Tribune switched to the offset process of printing, last week. Editor, Jas. Thomas holds one of the first copies to roll off the press at Bramalea. — Staff Photo.

New Milk Quotas Tough On Dairymen

A. A. WALL, Ag. Rep., York County Milk pooling and new quotas are getting closer for dairy farmers. Quotas have now been set and all producers are to be advised of their new figure sometime this month. Anyone wanting their quota right away can get it by asking for it from the Milk Marketing Board.

Unfortunately, for many dairymen, the new quotas will be smaller than the present ones. The base setting period was August, 1965 to July, 1966, with April, May and June excluded. New quotas will be roughly 75% of the average daily shipments in this period.

These quotas are expected to come into effect when pooling starts, and the target date for pooling is February 1. The objective of the Board will be to pay top price for 90% of all quota milk.

TOUGH SPOT
The tight lid quotas, and smaller quotas for many, puts dairymen generally in a tough spot. Good management says that to offset higher operating and overhead costs, herd size should be increased.

The marketing situation seems to be in just the opposite direction.

Quota can be bought of course, but it's hard to accept the addition of new overhead costs, and there won't be enough come up for sale to help more than a few anyway.

The situation concerns many farmers, and our York County Milk Committee will hold a meeting in November for all producers to discuss it thoroughly.

TOP PLOWMEN
Many plowmen for York won important prizes at

50,000 MILES of SMILES from

GILES

1967 Chevrolet IMPALA 4-DOOR HARDTOP

Has 8 cylinder engine, automatic, power steering and brakes, white walls, chrome wheel discs, radio, floor mats, door guards, 6,450 miles. New car warranty — 5 years, or 50,000 miles.

SAVE \$942 Off List Price

GILES

Chey-Olds, Ltd. Main West, Stouffville 640-1610 — 297-2391

the International last week. Grant Wells from Stouffville topped it all by winning the Canadian Championship.

DECORATE YOUR HOME THE FAST, EASY WAY WITH NEW 1/2" THICK DO-IT-YOURSELF BRICK...

Angel BRICK OVERLAY

BEAUTIFIES ANY INTERIOR SURFACE

1. APPLY ADHESIVE
2. APPLY BRICK.

4 EXCITING COLOURS

GOLDEN WHEAT
LAURENTIAN BLUE
CHOCOLATE RIFLE
BURGUNDY BLAZE



"Now available at:"

SHELL LUMBER
Stouffville — 640-3440

BEAT THE FREEZE!

new...fast...powerful HOMELITE XL-701



Here's a lightweight saw with new design, more power, faster cutting, and double the fuel and oil capacity. Cuts through 15" hardwood in 12 seconds, falls trees up to 5' in diameter. Includes all the famous Homelite professional features. And the cost is so low. Try it today — then cut your way to better profits.



STOUFFVILLE SALES & SERVICE
R.R. NO. 4 Stouffville, Ont.
Tel: 640-1814



2 YEAR Polar Brand Anti-Freeze

97.5% Pure Glycol plus Inhibitors!

Be sure! Be safe! Be sure you're safe this Winter and all year-round with Polar Brand Anti-Freeze for worry-free driving. Can't evaporate or boil away — keeps cooling system clean — inhibits rust and corrosion. Recommended for use in all vehicles including those with aluminum components. POLAR... Anti-Freeze at its BEST!

Chrome Guard — Protects chrome from road salts. Protects all winter long. 16 oz. spray bomb. 1.19	Carburetor Conditioner Works while you're driving... removes water, varnish and silt in gas lines, etc. 20 oz. can. .98	Ignition Spray Moisture-proofs the complete ignition system. Handy 6 oz. spray bomb. .59	Cooling System Conditioner Works 5 ways to prevent the common causes of cooling system failure. Works with Anti-Freeze. .79	Moto-Master Thermostats — Control temperature and heater performance. Pellet type. As low as 1.85 each.
Moto-Master Engine Heaters — Plug in type, available for most popular makes and models. From 6.29	Windsheild Sealer — use on glass, rubber, metal. Stops leaks, drafts, etc. 3 oz. .49	Moto-Master Radiator Flush — Removes rust, scale, etc. Improves circulation and efficiency. 10 oz. can. .49	Moto-Master Water Pump Lubricant and Rust Inhibitor — Lubricates and stops leaks. 20 oz. can. .64	Moto-Master "Purge" — 2 stage, cleaner, conditioner for plugged radiators. 18 oz. can. 1.14

GRAND OPENING SALE

PAINT FOR NEW BEAUTY

FREE free FREE free FREE

To the first 200 customers a FREE tin of
GLIDDEN RIPOLIN ENAMEL

SPECIALS specials SPECIALS specials SPECIALS

With every gallon of Glidden SPREAD Satin FREE Quart of Glidden SPREAD Lustre Reg. Value \$14.25 BOTH FOR \$10.70	GLIDDEN Caravelle INTERIOR LATEX Choice of Colour FOR ONE \$5.40 WEEK ONLY Gallon

Glidden Polyurthane FLOORENAMEL Your choice of colour Reg. \$11.95 gal. Opening \$9.50 gal. Price \$ 8.99 qt. Special \$2.85 qt.	COMPLETE Wood Finishing SUPPLIES Gild Strip P&V Remover \$2.99 qt. Gild-Tone Stains \$1.15 1/2 pt. Gild-Tone Varnish Gloss or Satin \$3.75 qt. Antique Kits \$4.49 each
--	--

GLIDDEN COLOUR STUDIO Free Colour Scheme Service for Your Home from the GLIDDEN COLOUR STUDIO	Dress up dull walls with Wall-Tex vinyl fabric wall covering More than 700 patterns, textures and designs. Beautiful, washable. See them now.	10% off above prices FREE ESTIMATES Painting & Decorating Inside and Out
--	--	---

Just Arrived NEW

SUNWORTHY WALL FASHIONS

READY-PASTED • WASHABLE • VINYL-COATED

Stouffville Paint & Decorating Centre
35 Main Street East, Stouffville Phone 640-1060
Hours Tues. to Fri. 9 to 9; Sat. 9 to 6.

21 YEARS OLD?

When you turn 21 you are no longer covered by your parents' Hospital Insurance. You must take out individual membership within 30 days. Get your application form at bank, a hospital, or the Commission.

NEW JOB?

To keep insured follow the instructions on the Hospital Insurance "Certificate of Payment—Form 104" that your present employer is required to give you on leaving.

NEWLY WED?

The "family" Hospital Insurance premium must now be paid to cover husband and wife. Notify your "group" without delay or if you both pay premiums direct, notify the Commission.

Your ONTARIO HOSPITAL INSURANCE Plan

Ontario Hospital Services Commission, Toronto 7, Ontario.

CANADIAN TIRE ASSOCIATE STORE

THE WELLINGTON WAY
Markham — Phone 294-1830 or 297-1733

Open Thurs. & Fri. Nights until 9 p.m.

EXTRA! Cash and Carry BONUS COUPONS