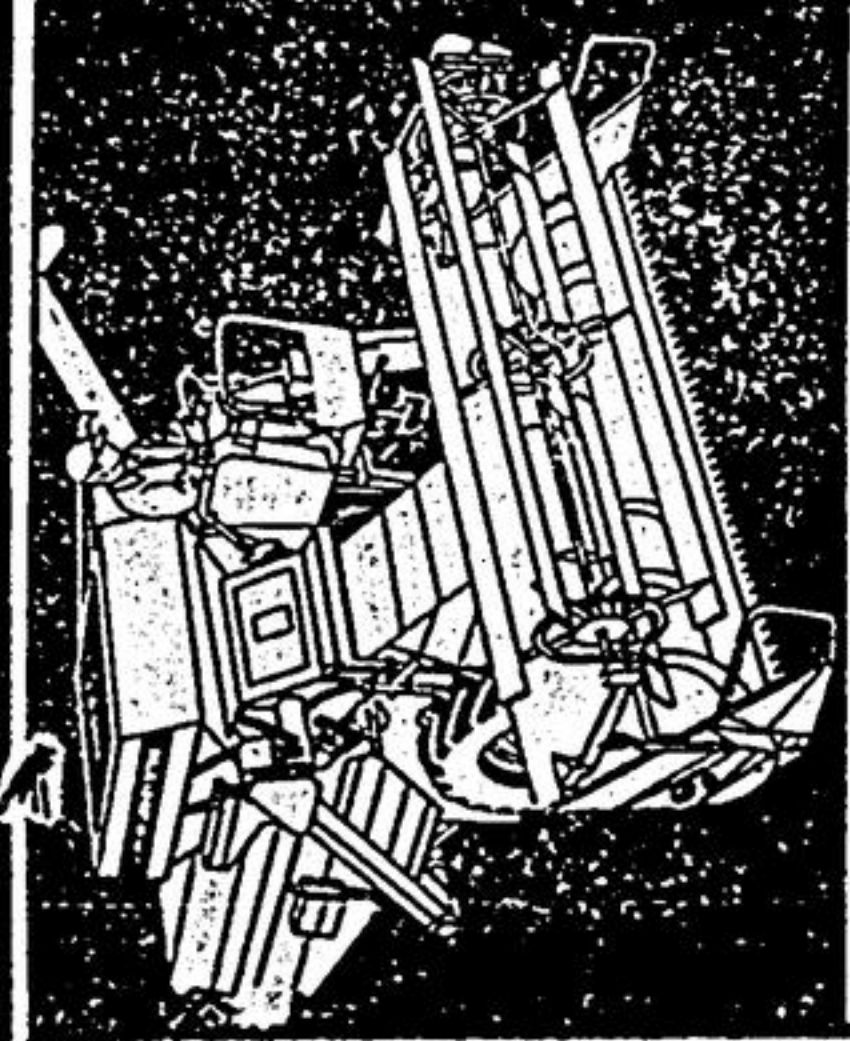
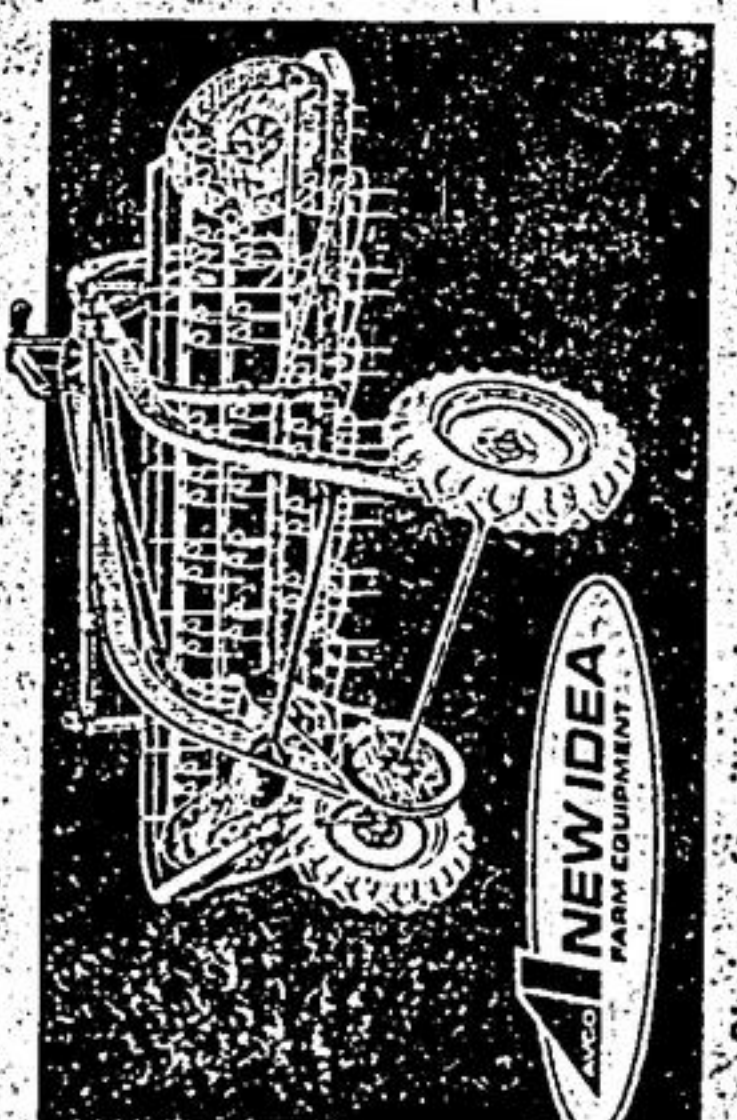


# SEE FARM EQUIPMENT IN ACTION JUNE 16th



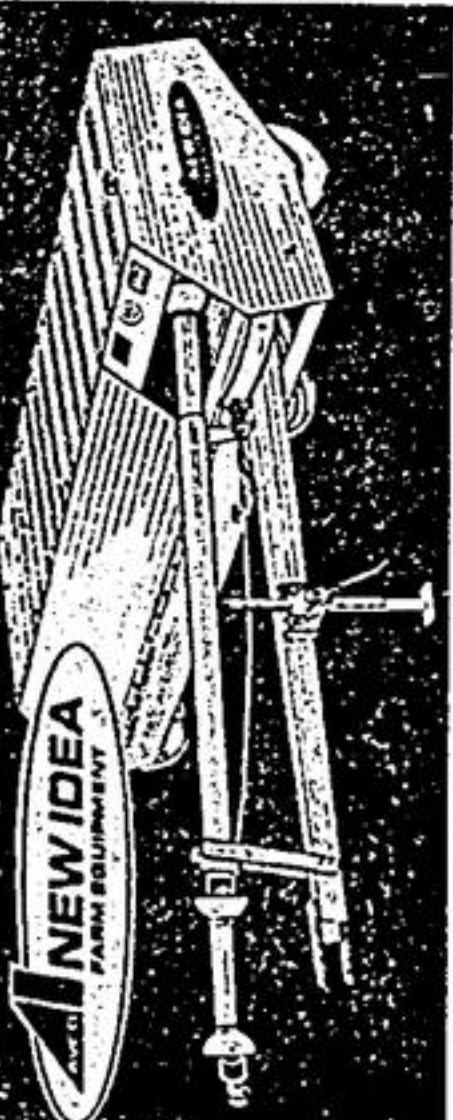
**MEET THE REAL "CORN COUNTRY" COMBINE**  
Uni-System's combine is built tough to haul through any cornfield, non-stop — or do a clean, thorough job in beans or small grain. There's a choice of cornheads, 2-row regular, 3-row wide or narrow row. Choice of 11 or 13-foot platform. Switch from one to another in 30 minutes. Switch from combine to picker, sheller or forage harvester in an hour. Excellent financing.  
**SEE US ASK US**

- 6 REASONS WHY NEW IDEA'S BELT RAKE IS SO POPULAR**
1. Belt drive
  2. Less reel bounce
  3. Easy-change reel speed
  4. Constant speed
  5. Choice of 4 or 5-bar
  6. Low price



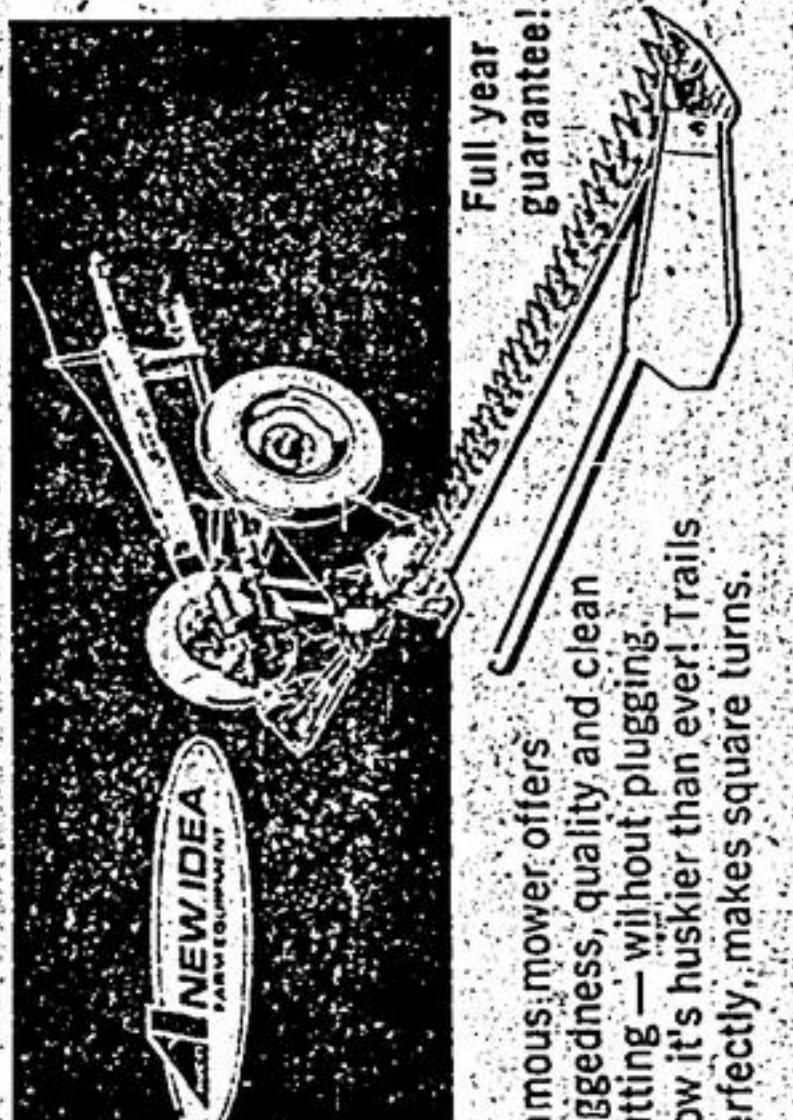
Choice of coil steel or rubber mounted teeth

**CUTS HAY, CONDITIONS IT... NON-STOP, PLUG FREE! NEW IDEA CUT/DITIONER**



You get non-stop mowing and conditioning with fluffy, palatable swaths or windrows. Shreds corn stalks, chops weeds or straw stubble, conditions straw for easier baling. Full year warranty. Excellent financing.  
**SEE IT SOON NEW IDEA CUT/DITIONER**

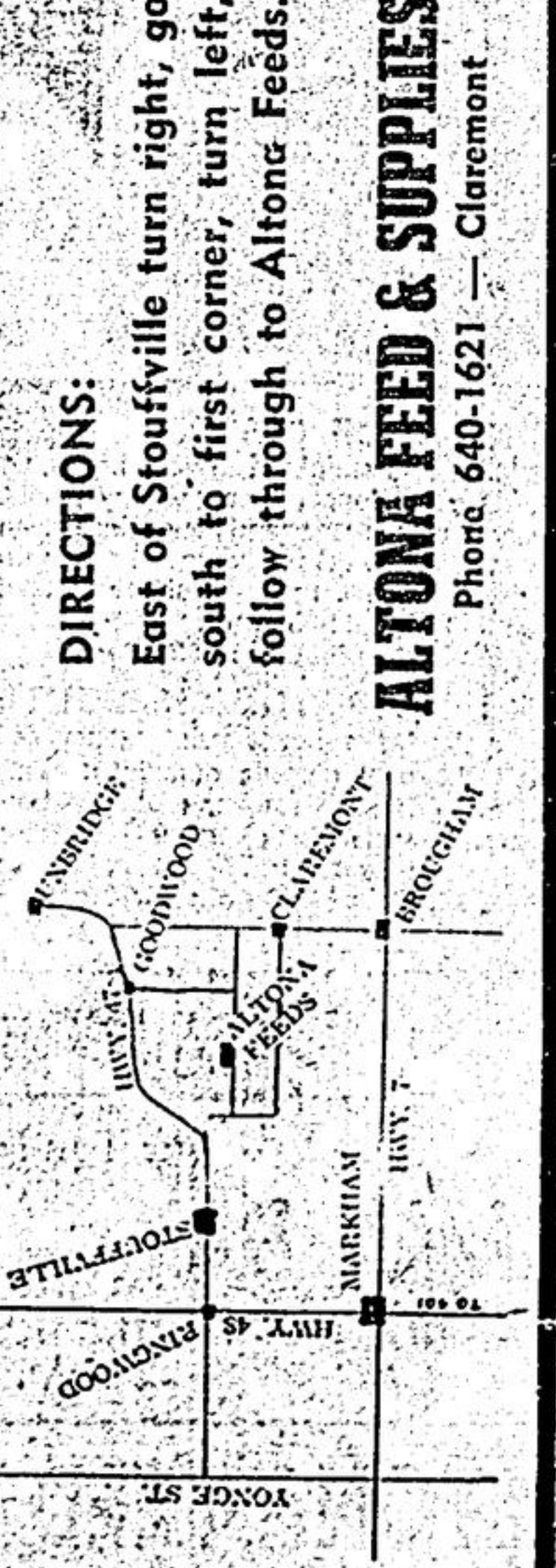
**hitch 'n mow**  
Mowing's a snap with this New Idea Full Trailing Mower... drop the plow snap on the PTO... and GO!



Famous mower offers ruggedness, quality and clean cutting — without plugging. Now it's huskier than ever! Trails perfectly, makes square turns.  
Full year guarantee

## SQUARE DEAL USED EQUIPMENT

- TRACTORS**
- 2 only Ford 9N Tractors
  - 2 only Ford 8N Tractors
  - 1 Ford NAA, Loader, Fr. Pump
  - Hyd. Snow Blk., Canvas Cab
  - FORDSON D. Major Tractor & Loader
  - 2 only MASSEY HARRIS tractors
  - 2 only MASSEY FERGUSON Tractors
  - Massey Ferguson 35 Tractor & Loader
  - COCKSHUTT 550 Tractor
  - USTRACK BUILD-O-ZER
  - CASE VA & Side Mid. Mower
  - CASE "S" Tractor
  - WISCONSIN VE4 Motor
  - 2 Only BEAVER Tractors one with cultivator, plow, other with Front Dzer Blade & Plow.
- MOTORCYCLES**
- HONDA 55C 105 Cub
  - HONDA 55C65 Cub
  - HONDA 55S65 Sport
  - 3 only HONDA 90 C200 Touring
  - HONDA 90C200 Trail
- PLOWS**
- Plow, Furg. 2 Furrow 3 Ft. Hitch
  - Plow, Ford 2 Furrow
  - Plow 2 Furrow
  - I.H.C. 2 Furrow
  - Ransome 3 Furrow 12"
  - Case 2 x 10 Ft. Hitch
  - Case Eagle Hitch
  - Ford 3 x 10
  - I.H.C. 3 x 10
  - Alf 3 x 12
  - Case 2 Furrow on Steel
- PLOWS & DECKER POWER TOOLS 1/2 OFF**
- | Reg.                                    | Now         |
|---|-------------|
| Electric Drill, 1/2" with drill chuck   | 19.50 12.95 |
| Sanding Attachment                      | 20.15 13.43 |
| Hedge Trimmer Attachment                | 28.49 18.93 |
| Screw Driver Attachment                 | 13.55 9.02  |
| Jig Saw Attachment                      | 20.30 13.50 |
| 7 1/2" Electric Saw in steel carry case | 69.95 54.95 |
| Grey Harrows                            | 3.00 1.95   |
| Garden Hose, 50'                        | 2.00 1.33   |
| Flare Reels — Deluxe                    | 9.95 4.98   |
| Lawn Sprinklers — Malmor, Deluxe        | 13.95 6.98  |
- MISCELLANEOUS**
- 2 only MANURE SPREADERS, 1 1/2' Spool
  - Manure Spreader — Oliver
  - 3 only M.H. SEED DRILLS
  - 2 only BELT PULLEY — FORD
  - Grain Grinder, M.H. 10 1/2"
  - Manure bucket for Freonon Loader
  - Snow Blade
  - Post Hole Digger Dearborne
  - Loader, Rear, Manure
  - Loader Horn
  - Loader Freonon New
  - 40 Poles
  - Reel, Scraper, Blade
  - Gauge Wheel (Rear Scraper Bls 1)
  - Steam Cleaner
- LAWN & GARDEN EQUIPMENT**
- 3 ONLY ROTILLERS
  - TRACTOR 2 wheel, plow cultivator
  - Tiller-Mat Power New Motor
  - Outboard Motor 5 H.P. Johnson
  - 21 LAWN MOWERS including Quiet File, 18" to 22" models, priced from \$19.95 up.
  - 7 ONLY LAWN MOWERS as is \$9.95
- CHAIN SAWS**
- McCulloch Sup. 33 Engine only
  - McCulloch 325, Harmer Motor
  - Mall 2 MG x 18"



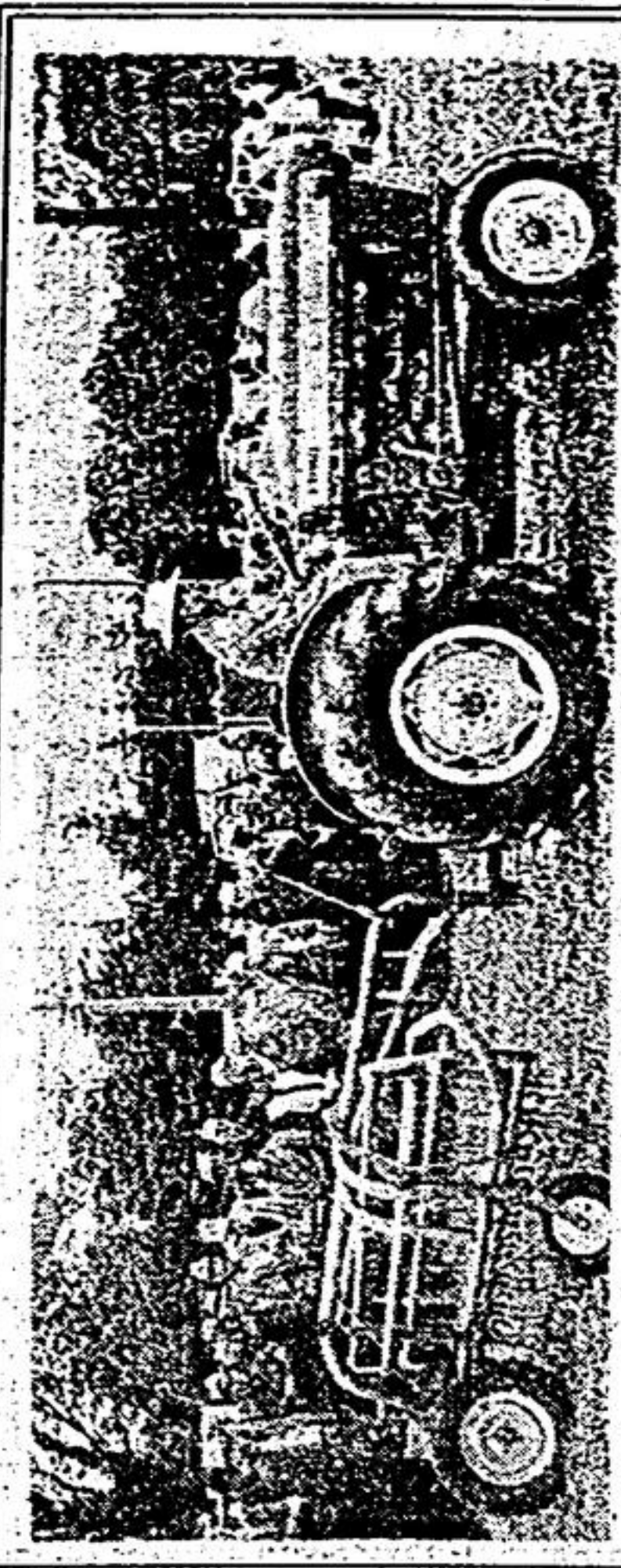
**DIRECTIONS:**  
East of Stouffville turn right, go south to first corner, turn left, follow through to Altona Feeds.

**ALTONA FEED & SUPPLIES**  
Phone: 640-1621 — Claremont

# IT'S THAT TIME AGAIN FOLKS, TIME TO ATTEND OUR FREE FUN-FILLED HAY DAY

COME AND JOIN IN THE FUN WITH US ON **FRI. JUNE 16th** BOBBY HULL will be in attendance from 2 P.M. to 7 P.M.

**ATTENDING IN PERSON THAT ILLUSTRIOUS HOCKEY PLAYER \* FARMER \* BUSINESSMAN THE CHICAGO BLACK HAWKS BOBBY HULL GOLDEN JET**  
SEE BOBBY HULL DURING OUR HAY DAY FROM 2:00 P.M. TO 7:00 P.M.



**IT WAS A SMASH HIT LAST YEAR!!**

Demonstrations: Fun and profitable was really great last year. We hope you all enjoyed yourselves that day. We had a great turnout and a large number of the over one thousand who attended this year's event!  
This year we were very fortunate to arrange the visit of BOBBY HULL, the Black Hawks "Golden Jet", and an avid Ford farm equipment user. You'll also see "Haying Demonstrations" in the field next door to our store. There's also an extra one-day bonus for all those who purchase \$500 or more in equipment. Go, watch BOBLOVA WATCH the action. Go, watch BOBLOVA make a point of visiting us during this one-day event, you'll find out.

**HAY DAY IS AN EVEN BIGGER AND BETTER EVENT THIS YEAR!**  
Come and Join Us.

# FREE DANCING

9 p.m. to 12 Midnight  
Join in our Jamboree — you'll click your heels and have real fun when you dance to the music of...

**COUSIN LUPE'S**  
Country Rhythm Kings  
featuring **DON CELSIE**

Keep right in tune with the Country Music Stars of Stagg, Radio and TV  
**BOTH MODERN & COUNTRY MUSIC**

**DIRECTIONS**  
East of Stouffville — turn right — go South to first corner (Elson's garage on corner) turn left here and follow straight through to Altona Feeds.

# ALTONA FEED & SUPPLIES LTD.

SALES — SERVICE — TRADE — TERMS CLAREMONT — TELEPHONE 640-1621