

# Tribute To Centennial

## Fund-Raising Banquet

### Markham Village Reeve Urges Cenotaph Support

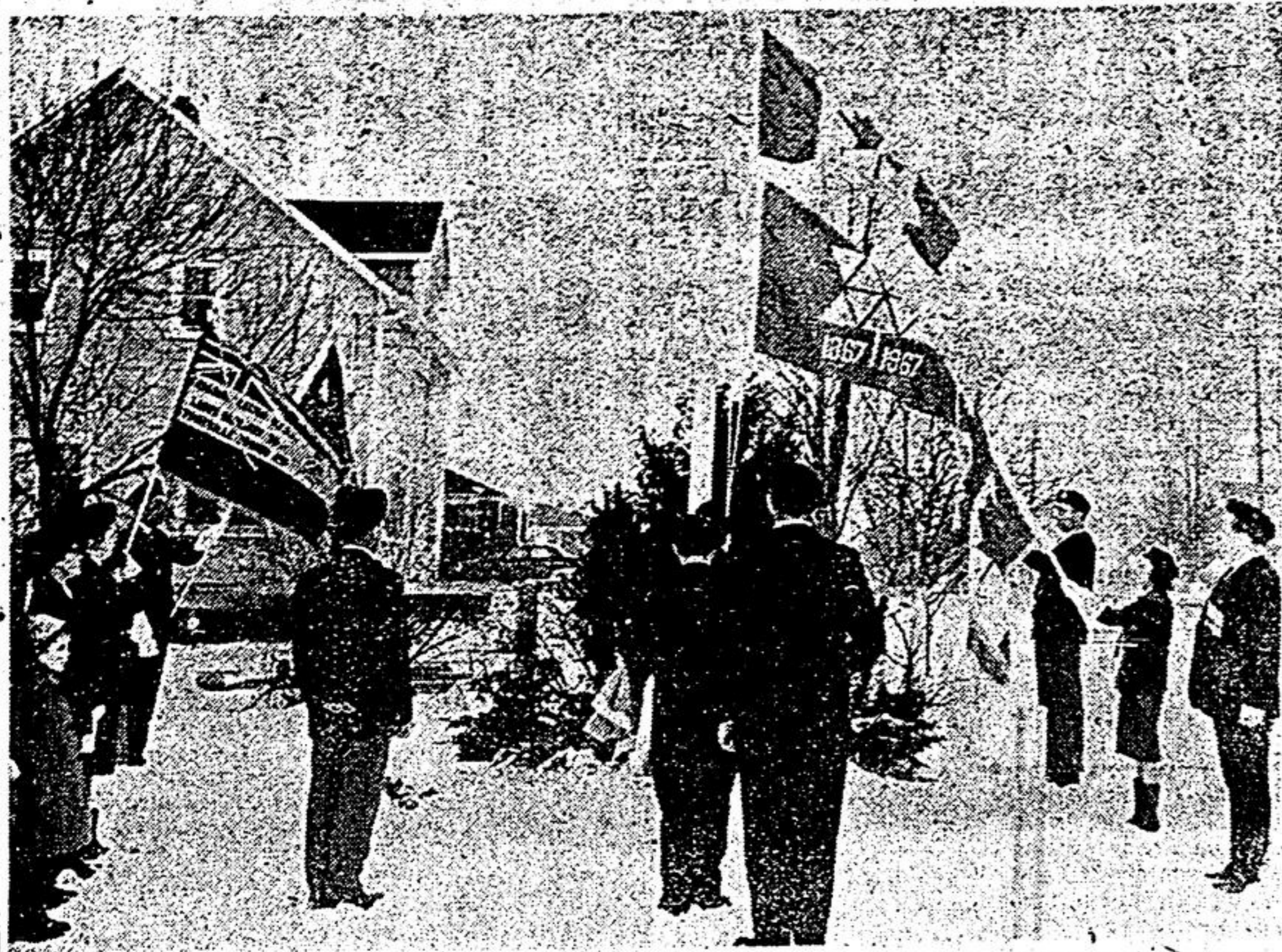
MARKHAM — Reeve Alma Walker of Markham Village said in a New Year's Message: "I am thrilled to be Reeve in what will be one of the most exciting years in the long, varied and colorful history of this village. The spontaneity and enthusiasm of many groups has enabled us to complete our official Centennial project, the new Library, well on schedule, and the Centennial celebration will be well under way with the big Costume Skating Party early in January.



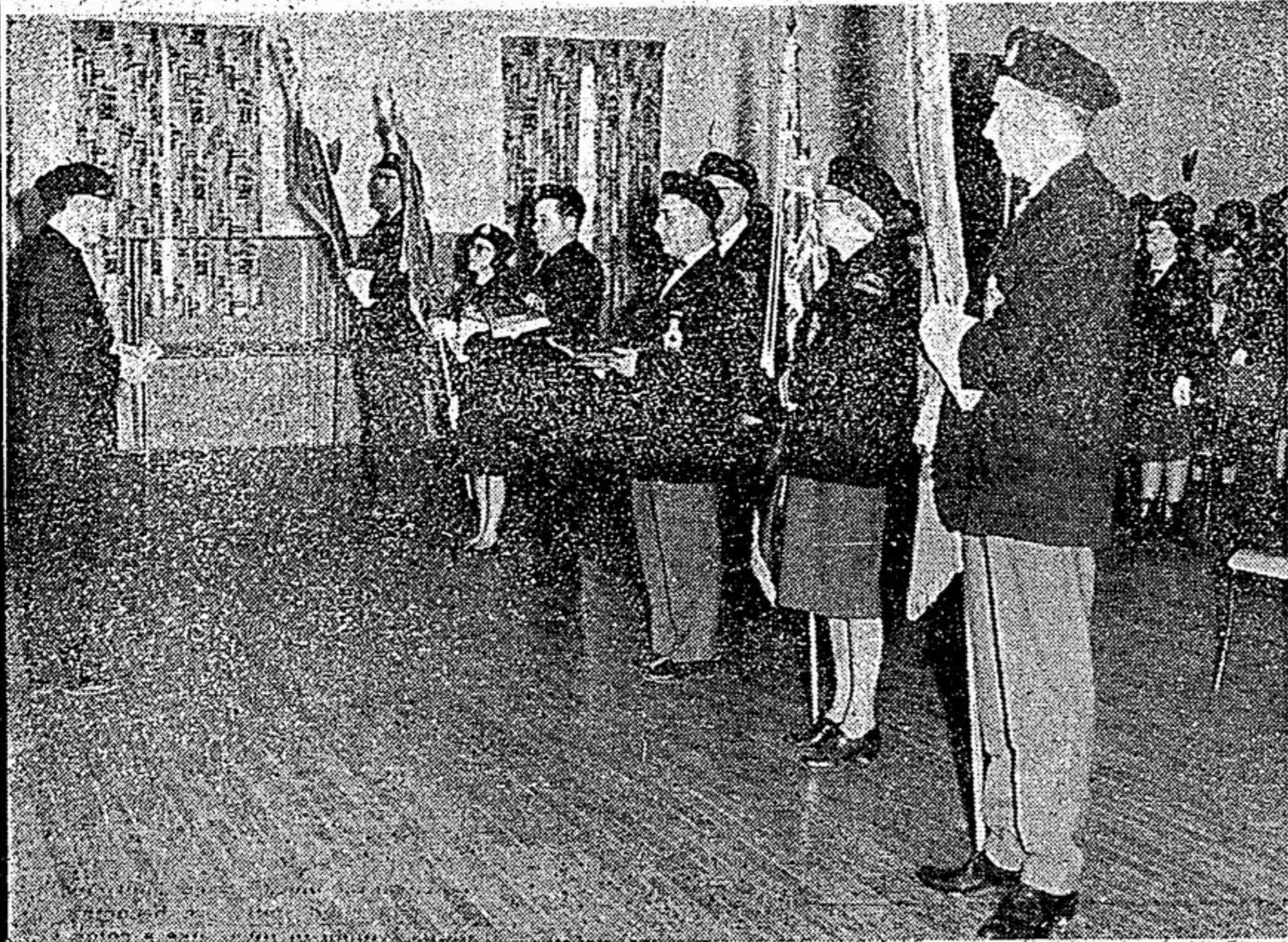
Reeve Alma Walker

Another important citizens' project in 1967 is the erection of a cenotaph in memory of those who will not be able to celebrate the Centennial but enabled us in no small measure to do so in the blessed freedom we enjoy. I am no art connoisseur but I like what I see in the model and I trust the wisdom of the Cenotaph Committee and the artistic integrity of the sculptor, Miss Rebecca Sissler. As ever watchful of expenditure, I know we are obtaining in the Cenotaph not only a long overdue memorial but also a piece of art that will endure during our second century, the value of which will increase, each passing year, not only dollar-wise but also in the moral values it represents.

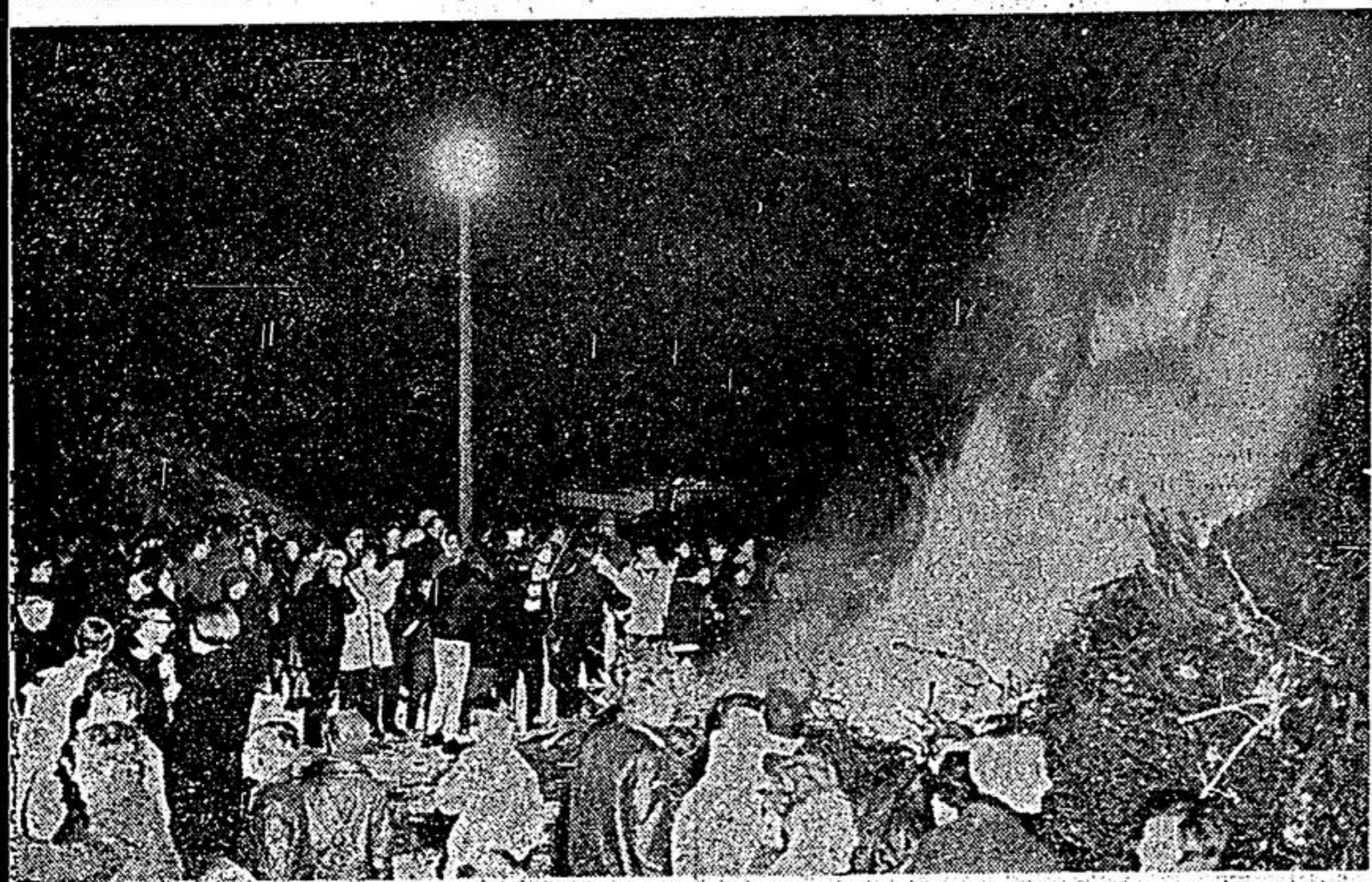
I urge every citizen (man, woman and child), and every civic group to support the Cenotaph Committee in its endeavour and especially its fund raising dinner, February 23, 1967, at The Inn on the Park."



To the sound of the bugle and a cannon salute, new Maple Leaf and Centennial flags are raised to the top of the pole in a ceremony outside the Stouffville Legion Hall, Sunday afternoon. —Staff Photo.



The dedication of the colors was conducted by Stouffville Legion Branch Padre George Davison at the conclusion of an impressive service on Sunday. The ceremony marked Canada's 100th birthday and the 20th anniversary of the Stouffville Legion organization. —Staff Photo.



Canada's centennial year was ushered in at midnight in Stouffville, Jan. 1 with a huge bonfire in Memorial Park. The project was sponsored by the Student Council of Stouffville District High School. —Cadieux Studio.

## Ontario County Boosts Budget For Assessment

WHITBY — Ontario County Council closed out the year by boosting the assessment budget almost \$100,000. The entire county would be re-assessed over a period of three or four years and five additional assessors would be required.

The new year 1967 will be the first year for county assessment and uniform procedures will be carried out in every municipality. In Pickering Township there are 12,000 to 13,000 properties to be assessed and there has been no revision since 1952. The report of the assessment committee revealed that there are more than 40,000 properties in the county comprising about 500,000 acres with a population of about 89,000. Pickering Township Reeve Cliff Laycox agreed that much of the agricultural land in the township was being held by speculators who should be paying the shot.

On Sunday evening 24 members of the Fockler family gathered at the home of Mr. and Mrs. Norman Nigh, Charles Bullock and family of Agincourt, Mrs. Leo Nidderly of Aurora and Mr. and Mrs. Clarence Fockler and family, Mr. and Mrs. Bruce Fockler and family, all of Ringwood, Mr. and Mrs. Tom Douglas Nigh of Armitage.

### PRENATAL CLASSES FOR EXPECTANT MOTHERS

A course of weekly classes beginning in Richmond Hill, 10 January, 1967, and Newmarket, 12 January, 1967, at 7:30 p.m. in hygiene of pregnancy, how baby grows, food for the family, feeding of the baby, the hospital stay, and other subjects of importance to the expectant mother.

Fathers are invited to attend the first and eighth classes. Registrations now being accepted at.

**YORK COUNTY HEALTH UNIT**

Richmond Hill, 15 Yonge Street North	884-1133
Aurora, 68 Yonge Street South	727-9441
Newmarket, 22 Prospect Street	895-4511
Stouffville, Main Street	610-1334
Sutton, High Street	722-3571

### Are You Getting The Runaround On Warranty?

If you are, perhaps you should partially blame yourself. Where did you buy your car? Did you think — or care — about the dealer's reputation for service and integrity? Or was price your only consideration?

Almost all owner's dissatisfaction with the warranty on their new cars is related to the answers to these questions. Here's why:

A co-called "price dealer" or "wheel and deal" operator in the car business, usually a large city dealership, attracts a customer with price ads and sells him with pressure.

This dealer then tells his customer that there is a good service dealer right in the customer's own town or neighborhood who is obligated to take care of the warranty needs of the customer.

Why doesn't the price dealer want to do it? Usually for two reasons: His sales far outstrip his service capacity, so he couldn't anyway; or if he could, he doesn't want to because the work is not profitable.

This is one of the ways such a dealer cuts corners on costs to offer the customer what may SEEM to be a bargain, but is certainly not.

In practice, the quality-service dealer is hard put to take care of his own new-car customers. Even if he had the desire to take care of the price advertiser's customers, he may not have the space or facilities.

So guess who gets the runaround?

**Markham Chrysler - Dodge**  
No. 7 Hwy. & Laidlaw Blvd. Phone 294-1742

Buy Your Office Supplies At The TRIBUNE

## 6 1/4 % PAID ON GUARANTEED TRUST CERTIFICATES

- issued 1 to 5-year term.
- earn the above indicated interest, payable half-yearly by cheque.
- authorized investment for all Canadian Insurance Companies and trust funds.

**THE STERLING TRUSTS CORPORATION**

372 Bay St., Toronto	35 Dunlop St., Barrie	73 Mississauga E., Orillia
----------------------	-----------------------	----------------------------

## NEW YEAR NEEDS 1967

Now At Your Tribune Office Supply Store

WORK-A-DAY CALENDARS with plastic base. Calendar refills now in stock. . . . .	\$1.95 UP
TELEPHONE INDEX BOOKS AND AUTODEX . . . . .	\$1.25
DAILY APPOINTMENT BOOK one day to a page. 8x5 1/2. Flexible cover . . . . .	\$4.00
FIRE RESISTANT SECURITY CHESTS . . . . .	\$15.65
BRIEF CASES - ATTACHE CASES - ZIPPERED PORTFOLIOS . . . . .	\$15.95
DESK ACCESSORIES . . . . .	89c

HOME FILES, FILE FOLDERS, PRONTO STORAGE FILES, ETC. - YEAR END NEEDS FOR HOME OR OFFICE.

### JUST ARRIVED!

THE NEW, PORTABLE "SUPER STERLING" by Smith Corona. Ultra-modern design, full 88 character key board, all-steel construction, sturdy carrying case . . . . .	\$129.50
UNDERWOOD OLIVETTI DL33 . . . . .	\$109.50
The Ever Popular CORSAIR by SCM at the same LOW PRICE . . . . .	\$69.95
NEW ELECTRIC ADDERS . . . . .	FROM \$119.50

NOW IN STOCK

ALL, NEW STYLES FOR 1967 — SEE THEM NOW!

A Limited Number of Typewriters For Rental Available at This Time.

## THE TRIBUNE Office Supply Store

54 Main St. — Stouffville — Phone 640-2100