

FARMING REPORT

By AL WALL



Agricultural Representative for York County, Newmarket.

York County beef producers did a fair amount of chewing over the beef business at their annual meet at Sharon last week. The beef itself however, didn't need much. Chief Bill Sutherland and Howard Silver served up three 35 lbs. roasts to perfection.

There was lots of discussion on marketing, breeding, prices and feeding. Gerald Graham of Udonia was elected president of the association, with Grant Burroughs of Kleinburg as vice president.

On feeding beef, it is perhaps timely to summarize some of the results of recent research. First, corn silage is without a doubt the beef feeder's best friend. One test compared silage with grain corn for market steers. The grain-fed cattle gained about half a pound more per day, but those on silage put on gain at 13 cents a pound, while the grain-fed group had a cost for feed of nearly 20 cents.

Another test compared corn silage with pasture. 1050 lbs. of beef were obtained from an acre of silage, compared to 300 lbs.

from an acre of pasture. The profit per steer was higher for the pasture-fed group, but the profit per acre was about \$40.00 higher for corn silage.

Feed additives are in the beef picture too. The really consistent good results only comes from adding stillbesterol or synavex. Feed efficiency improvement of from ten to twenty percent is almost a sure thing.

The experience with vitamins and antibiotics isn't nearly as clear cut. One test using Vitamin A with Ontario bred steers, showed that it didn't improve either rate of gain or feed efficiency. Western cattle may respond to extra vitamins but apparently Ontario cattle do not. Aureomycin had no consistent results in tests at Guelph either.

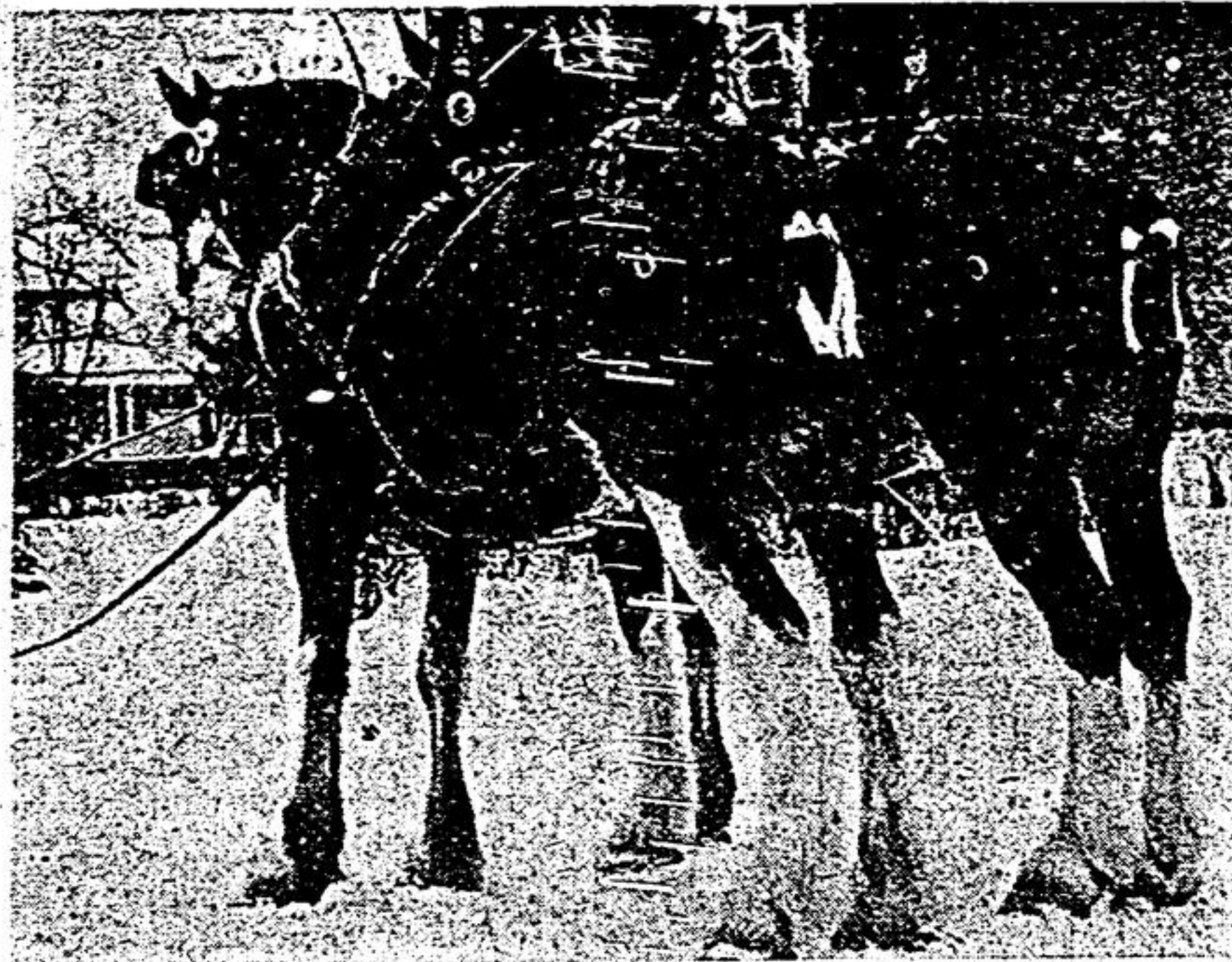
Farmers' Week at O.A.C. starts on Monday, Feb. 21st. Up-to-date information will be presented each day and the sessions are well worthwhile. Soils and Crops will be dealt with on Monday; Dairy Cattle on Tuesday; and Farm Buildings on Wednesday. Thursday is for Beef and Swine, and on Friday, Farm Economics is the special topic.

Gold Seal Ayrshire

ASHBURN — An Ayrshire cow, Lessnessock Sweet Smile, owned by William G. Reid of Ashburn, has been awarded a Gold Seal Certificate. She is one of nine, owned by Ontario breeders to qualify for the award through the production of 100,000 pounds of milk or more.

The certificates are given in recognition of meritorious lifetime production achievements.

The Ashburn cow has completed nine lactations, producing 112,198 lbs. milk; 4,590 lbs. fat; 4.09 percent in 2,981 days. She was imported from Scotland from the herd of A. W. Montgomery and Sons Ltd., Ochiltree, Ayrshire, as a heifer.



Team Champions

This picture was taken back in 1923. The team is a fine pair of Clydesdale three year olds owned by Lloyd Turner of Stouffville. The team had just been returned from the Ottawa Winter Fair where they captured four 1sts, one 2nd and one 3rd. They were later sold to a Winnipeg company to comprise part of a six-horse team. Mr. Turner along with T. H. Paisley and Hugh Boyd were mainly responsible for the once-popular Christmas Horse Show in Stouffville that attracted viewers from a wide area.

Good Soil Mixture For House Plants

House plants do best when given a good soil mixture suited to their requirements. Garden soils are often too low in organic matter and fail to give proper aeration or drainage. A mixture suggested by horticulturists with the Ontario Department of Agriculture combines seven parts compost or good garden soil, two parts organic matter (well-rotted leaf mold or peat), one part wellrotted manure and two parts building sand.

It's a good idea to add about half a 4-inch pot of superphosphate to every bushel that you prepare. If the soil is low in fertility, add one-quarter of a 4-inch pot of complete fertilizer and the same amount of superphosphate per bushel. Be sure to mix well. To have the right soil moisture for potting, make sure that the soil just holds together when you squeeze it.

Wide Choice Of Feeders

All feeder systems look good, but it is hard to know which is best for your operation.

Feed carts, chain and slats conveyors, and shuttle-stroke feeders are only three choices. Fence-line feeders filled by a self-loading wagon, and lazy-susan feed bunks around silos also offer labor-saving features.

According to Martin Wrubleski, Extension Engineering Specialist, Ontario Department of Agriculture, the simplest type is an auger, usually 9 inches in diameter, rotating down a feed bunk between two 2 x 10 planks above the bottom of

the trough. Raising and lowering the auger and planks controls the amount of silage spread, and the feed bunk can even be 150 feet long. The advantages, Mr. Wrubleski relates, are its low installation price and ease of expansion. However, the high power requirement — 2 hp per 50 feet — and possible feed jamming in the first section of the feeder as the motor starts up are not in this auger's favor. Also, only one group of cattle can be fed at this feed bunk.

"Another type is the tube-type feeder; the auger rotates inside a metal tube," notes Mr. Wrubleski. "Some

feed openings are regularly spaced along the tube. Others offer simultaneous distribution along the auger's length by spirally placed holes. One type has openings on the top of the tube so that, when the tube is full, it can be rotated to discharge silage along the entire bunk.

In deciding your feeder setup, the overhead-swinging-arc feeder also offers advantages. In this type, a stationary conveyor carries the feed to a pivoting auger enclosed in a pipe. The delivery end of this auger then rides back and forth along a track over a semicircular

Big News In Pig Industry

A hybrid variety of pig produced after five years of genetic research by the University of Toronto's Connaught Medical Research Laboratories could give Canada a world lead in the production of quality hogs. The variety promises greater profits to both farmers and the meat-packing industry. Early results indicate they grow faster on less feed and mature into meatier animals.

One Ontario farmer in the Connaught program showed a 28 per cent return on his investment last year. Connaught men say 15 per cent would be a conservative return for a good farmer raising the hybrids. Some 50,000 "CSs"—the Connaught trademark—are likely to be sold in Canada this year, one per cent of total hog marketings.

Central Ontario PURE BRED HOLSTEIN CONSIGNMENT SALE TUES, FEB 22nd, at 1 P.M. at the COW PALACE Stouffville

You will find entries by such sires as Rosendale Shamrock (extra), Roscoe Domino (extra), Selling Sovereign Achilles (extra), Healds Ref. Sovereign, Roscoe Herstad (ex.), Selling Rosanna (ex.), All-Can. Thorsen Total Supreme (ex.), All-Can. Roland Ref. Sovereign (ex.), Browning Patent Realization and other great sires. Young cattle to date that have been entered are mostly by unit sires. HERE IS AN EXAMPLE. SEE THESE SOVEREIGN BARBARA DUCHESSE graded very good by Roscoe Domino (extra) 2nd prize Ace Cow at Durham County Black and white show 1965 in a class of 11. She made 13,336 milk, 570 fat, 3.25% at 6 years and will freshen at sale time to a Selling Rosanna Son that was a show bull. She has several other good records. Rosendale Ref. Tory 4 year old in Dec. by Roland Ref. Sovereign. She made 12,900 lbs. milk, 2.9% in 390 days as a 3 year old from a Maple Dam over 121,000 lifetime total and 14 Dec in March to the \$25,000 Robrook Trotter. You will still have time to consign a top cow or two to this sale.

Frank Bennett — Norman Faulkner, SALES MANAGERS & AUCTIONEERS.

Buy Your Office Supplies At The TRIBUNE

"Tot this down Miss Street . . . We have made arrangements with K. W. BETZ CONSTRUCTION CO. LTD.,

to commence renovating plans in February. Call Stouffville, 640-1424 and confirm dates."

And it's a wise move to make! Why don't you start your renovating or fix-up plans right now while the men at K. W. BETZ Construction are available to start on the job immediately. Remember, in Spring it's a different story, we're usually jammed tight with building jobs. Let us give you a free estimate . . . no job too small or too large.



SPECIAL SMALL BUSINESS LOANS

If you are the owner of a small business you may take advantage of a special SMALL BUSINESS LOAN available at your bank! Why not inquire!

Beef Assoc. Directors

UXBRIDGE — In his address to the annual meeting of the Ontario County Beef Improvement Association, in Uxbridge, Mr. Don Hart, Woodstock, emphasized the importance of balanced rations for beef cattle. Each year Mr. Hart feeds around 600 cattle in two feedlots. The directors for 1966 are as follows: Pickering, Edgar Ward, Claremont; Whitby, Gordon Hunter, Brooklin, #1; East Whitby, August Geisberger, Oshawa, #2; Reach, Norman McLeod, Blackwater, #2; Scugog, Peter Hart, Port Perry, #3; Uxbridge, Hugh Shilling, law, Mount Albert, #3; Scott, Carman Boardway, Mount Albert, #3; Brock, Clare Bagshaw, Sunderland; Thorah, Clarence Hewitt, Beaverton, #3; Mara, John Speedie, Brechin, #1; Rama, Hector McKinnon, Orillia, #6; Directors at Large, Gus Lask, Sunderland, #1; Harvey Blackburn, Uxbridge, #2; Walter Beath, Oshawa, #2; Auditor for 1966, Gordon Ewen, Uxbridge, #1. Annual Meeting, Toronto, 17 and 18 Delegate, Walter Beath, Oshawa, #2; Alternate Delegate, Edgar Ward, Claremont.

PICK UP YOUR DOLLARS RIGHT NOW!

GET STARCROSS 288 CHICKS FROM SWIFT—PROVED SUPERIOR AS A TOP PROFIT PRODUCER!

There's a prosperous future in your hands when you pick up Starcross 288 chicks today. Next fall and winter your egg income—your egg profit—will be the highest possible. Test after test in the United States proves that Starcross 288 has consistently excelled in across-the-board comparisons. Just look at this recent Random Sample Test in New York.

	Net Income	Eggs Per Pullet Housed	% Eggs Large and Extra Large
Shaver Starcross 288	\$3.55	253.7	77.8
Test Average	2.74	222.9	75.7
Shaver Advantage	\$.81	+30.8	+2.1

Get Starcross 288 chicks—the proven money-producer from your Swift Hatchery or your nearest Swift Hatchery dealer. Ask him to show you all the facts—it's the surest investment information anyone can have.

SWIFT'S HATCHERY

CHAS. JACKSON

Goodwood, Ont. Phone Stouffville 640-2726

Personalized Service AT YOUR... RED & WHITE MEAT DEPARTMENT

Opening Today! Red & White Foodmasters 134 Hucknall Rd., Downsview and Shelburne, Ont.

SUNSHINE FRESH!
Fresh - Crisp - No. 1 California Iceberg
Lettuce 25c ea
Nutritious-Nutty Flavor-No. 1 - 1 1/2 lb. poly bag
PARSNIPS 23c
Fresh and Tender - No. 1 Bunch
BROCCOLI - 39c
July - Ripe
ANJOU PEARS 5 for 45c

SHROVE TUESDAY COMING UP!
Save 4c on Pancake Flour — 16-oz. Pkg.
AUNT JEMIMA 21c
Save 10c — Table — 32-oz. Size!
OLD TYME SYRUP 59c

PORK BUTT ROAST 69c lb
Tender - Juicy - Well Trimmed - Braided
RIB or CLUB STEAKS 89c lb
"Ideal For Broiling" — Choice - Thick Cut - Imported
LOIN LAMB CHOPS 69c lb

BEST BUY! Save 25c! — Aylmer 10-oz. Tins. F O R 883c
TOMATO SOUP

BEST BUY! Save 9c! — Green Giant 14-oz. Tins. F O R 477c
NIBLETS CORN

BEST BUY! Save 13c! — Libby's Fancy Quality 48-oz. Tins. F O R 269c
TOMATO JUICE

BEST BUY! Save 6c! 2-lb. Decanter CROWN Golden Syrup 33c

BEST BUY! Save 8c! — Pkg. of 60 Tea Bags Gift Earrings - 1 Pair in Each Package Mother Parker's 77c

BEST BUY! Save 25c! — White or Coloured Facial Tissues Pkgs. 400's F O R 379c
SCOTTIES Tissue

BEST BUY! Save 32c! — White or Coloured — Twin Pack DELSEY TISSUE 8 rolls \$1

FROZEN FOOD FEATURES!
Save 17c! — Morton's — All Varieties
MEAT PIES 489c
SUPREME BRAND GREEN PEAS 2-lb. Cello 53c

KIDNEY BEANS 15-oz. Tins. F O R 349c
Stokely's

Kiddies Will Love New - Libby's
ALPHA - GETTI 15-oz. Tins. F O R 239c
CASH YOUR 7c COUPON —

MARGARINE 3-lb. Economy Pack 93c
Save 12c! — 6c Off Pack!
BLUE BONNET COLOURED —

AJAX DETERGENT 16-oz. Laundry Giant Pkg. 83c

NESCAFE COFFEE 6-oz. Jar. Save 30c! — 14c Off Pack. INSTANT — \$1.03

Save 9c!
CAKE MIXES BETTY-CROCKER LAYER STYLE — 19-oz. Pkg. F O R 289c

BIG "G" CEREALS Save 11c! Cheerios - Wheaties Trix - Coco Puffs 3 for \$1

Biscuit Feature!
SUPREME BISCUITS FANCY — 5 VARIETIES. Cello Pkgs. F O R 389c

Business Directory

AUCTIONEERS
W. D. ATKINSON
Ph. STOUFFVILLE 640-1494
Licensed Auctioneer and Sale Manager
SALES CONDUCTED ANYWHERE
Specializing in the preparation and selling of purebred consignments and dispersals, farm auctions, furniture, and real estate sales.
Bills prepared and posted at no extra cost. This specialized service really pays off and means money in your pocket.
Ph. STOUFFVILLE 640-1494

KEN & CLARKE PRENTICE AUCTIONEERS
Licensed and authorized for the Counties of York and Ontario
Markham P.O., Ph. 294-3161 or 640-3636
Prentices have been established auctioneers since 1890.

A. S. FARMER
Licensed Auctioneer
Counties of York & Ontario
Farm Stock & Furniture Sales A Specialty.
Telephone: Gormley 887-5311
Address: Gormley P.O.

ACCOUNTANTS
JACKSON & CHRISTISON
Chartered Accountants
Thos. N. Shea Limited Bldg.
Hwy. 7, Markham
Telephone 297-2491

JOHN C. WYLIE, F.I.A.
Licensed Public Accountant
AUDITOR
Office & Residence — "Wylie Acres" Musselman's Lake Road, R.R.2 Stouffville.
PHONE 640-3144

LEONARD R. ROSENBERG
B.Com.
Chartered Accountant
Bank of Nova Scotia Building, Aurora
Telephone PA. 7-9451

BEAUTY SALONS
The POWDER PUFF Beauty Salon
JOY BOSS
Days Tues. thru Sat. Nights Wed. and Fri.
For appointment call 640-2472

Margaret's Beauty Lounge
Days — Tues. thru Sat. Nights — Tues., Thurs., Fri.
For appointment call 640-2932
45A Main St. W. Stouffville

CHIROPRACTORS
WM. S. BAIRD, D.C.
Doctor of Chiropractic X-RAY
By Appointment
227 Main St. N., Markham, Telephone 294-0701

J. S. DeLAURIE, D.C.
201 Main Street West Stouffville, Ontario
OFFICE HOURS
By appointment only Monday to Saturday.
TELEPHONE 640-3562

FUNERAL DIRECTORS
O'NEILL Funeral Home
STOUFFVILLE
Continuous Telephone Service Day or Night
Phone Stouffville 640-2855

INSURANCE
THOS. BIRKETT AND SON LTD.
General Insurance Agency
Stouffville, Ontario
Insurance in reliable companies at realizable rates.
— Prompt Service —
Telephone 640-2000
Evenings—
Gordon R. Birkett - 640-3715
Les Clarke - 640-2144
Bob Hassard - 640-3585
Willis Taylor - 640-1976

LAWRENCE COHEN, B.A., LL.B.
BARRISTER & SOLICITOR
R.R. No. 2, Stouffville Ont.
Telephone 640-2680

PAUL W. J. MINGAY, B.A.
BARRISTER & SOLICITOR
31 Main St., Markham, Ont.
Phone Markham 291-0350 297-1454

WILLIAM G. PARSONS, LL.B.
BARRISTER & SOLICITOR
157 Main St. W.
P.O. Box 820 Phone 640-2211 Stouffville

KENNEDY & KENNEDY
67 Richmond St. W., Toronto
Barristers, Solicitors, Notaries

ROSS KENNEDY
Prov. Hwy. 7, Locust Hill Markham 294-1632

CATTANACH & HINDSON
Barristers & Solicitors
Stouffville by appointment anytime.

MAIN STREET, MARKHAM
Phone 294-0666

ROBERT W. McVEY, Q.C.
Barrister & Solicitor
Suite 300,
67 Richmond St. W., Toronto
Markham Toronto
Ph. 294-2371 Ph. 363-0389

OPTICIANS
HOWARD G. MILLS, R.O.
DISPENSING OPTICIAN
286 Main Street West, Stouffville
Prescriptions Filled, Appointments Made.
Phone 640-3165

OPTOMETRISTS
F. RICHARD BLACK, O.D.
OPTOMETRIST
STOUFFVILLE MEDICAL CENTRE
Ph. 640-3722 for appointment
Hours: 10:00 a.m. to 8:00 p.m. Every Tuesday.

Art Wahren, B.A., O.D.
Optometrist
10 Alandale Ave., Markham
SHERWOOD PLAZA
Phone 294-2181

NURSING CARE
Competent & kind nursing service, catering to invalid, convalescent & elderly — semi & private accommodation in a country home atmosphere.
GREEN GABLES MANOR
Conc. 9, Stouffville, 640-3061

SURVEYORS
D. H. BLACK
Ontario Land Surveyor
310 Painted Post Dr. corner of Markham Rd., Scarborough, Ont.
PHONE ATLANTIC 2-6283
Res. 282-1508

Schell's RED & WHITE, Stouffville