

TO THE VOTERS OF STOUFFVILLE

Your generous support in the recent election was greatly appreciated.

May I wish you a very happy holiday season.

Ted Topping,
Stouffville Public School Board.

For Office Supplies — It's The TRIBUNE

SPECIAL BANKING HOURS

Christmas and New Years

The banks have announced the following special Banking Hours for the Christmas and New Year period:

THURSDAY
December 23rd and 30th
Hours 10.00 A.M. to 3.00 P.M.
4.30 P.M. to 6.00 P.M.

FRIDAY
December 24th and 31st
Hours 10.00 A.M. to 3.00 P.M.

MONDAY
December 27th and January 3rd
Closed

Bank of Nova Scotia
Canadian Imperial Bank of Commerce

Christmas Cherry Plants Require Special Care

This plant makes a popular gift during the Christmas season. Horticulturists with the Ontario Department of Agriculture have a few suggestions to help keep it at its best over the holidays.

The Christmas cherry must be kept in a cool room at 55 to 60 deg. F. If it is placed in a hot, dry atmosphere, it sheds its berries and leaves rapidly. Water regularly to prevent the soil from drying. This plant is highly susceptible to gas damage.

If you want to try growing your own plants for next year, here's what to do. Sow the seed in January or February. When the first leaves appear, prick out the seedling about an inch and a half to two inches apart in flat. Later, when the plants are big enough, transplant them to 2 1/2-inch pots. During the early stages, keep the plants cool (55 to 60 deg. F).

Set the plants at least 16 inches apart in your garden when danger of frost is over. While they are outdoors, supply enough water and fertilizer to ensure good growth. Remember, though, that too much nitrogen will produce excessive foliage, and will slow down flowering and the setting of berries. These plants set fruit poorly indoors, which is why they must be outdoors during the summer.

When adequate fruit is set, dig the plants and bring them indoors before heavy frost. Keep as much soil on the roots as possible. Place the plants in

five or six inch pots in a cool location, away from direct sunlight, for several weeks. Keep the plants well watered to encourage them to become established. Then place the plants in good light with a cool temperature (54 to 60 deg. F). Don't allow them to wilt or the leaves may drop off. Do not feed them, as the colorful berries will be hidden by excessive foliage.

BLOOMINGTON

Mr. and Mrs. A. W. Storry visited Miss Meyers at Zephyr on Thursday.

Birthday greetings were extended to Mr. Bruce Morton in the form of a shower of cards for his birthday of Dec. 11th. Mr. Morton has been transferred from the Stouffville Nursing Home to Riverdale Hospital.

Misses Patricia and Virginia Assinck and David of Markham will be flying to Florida on Friday for a two week holiday. They will join their parents, Mr. and Mrs. Joe Assinck who have been in Florida for a few weeks.

Congratulations and all good wishes to the newlyweds, Mr. and Mrs. Murray Ferguson.

Mrs. M. Thomas and Mrs. F. Smith of conc. 10 attended two public school concerts at Markham held in the United Church auditorium, last week.

The first wagon road through the Alps was begun in 1338 and led through the Septimer pass.

Give A Life For Christmas

For the man who has everything and wants to keep it, the Canadian Highway Safety Council offers suggestions for Christmas gifts that might prevent death or injury:

Seat belts for owners of vehicles without them.

Safety red triangle, for emergency stops in traffic.

Slow-moving emblem for those who drive tractors, bulldozers, other slow-moving machines.

Frost shields to keep mist and ice from rear and side windows.

Snow tires, chains, even chicken wire traction-mats for getting the wheels moving on slick ice.

Snow shovels, flashlights, carbon monoxide detectors, snow brushes, ice scrapers, new wiper blades, industrial towels for keeping glass clean, spare fuses, back-up lights, car pre-heater, seat belt retractors, timer that buzzes when it's time for a rest stop, gift car-check certificate, gift car-wash certificate, four-light flashers.

The Council strongly advises against giving the motorist "gimmick" gifts. These include danglers that obscure or interfere with the driver's vision when hung inside the windshield or rear window, gimmick lights that distract and confuse other drivers, and children's car seats that cannot be securely anchored for safety.

The word salary comes from "salarium" meaning salt money, since Roman soldiers received part of their pay in salt.

Stouffville Lions Christmas Message

Lion Douglas Davis delivered the annual Christmas message to the members of the Stouffville Lions Club at the club's regular meeting on Monday night. Musical entertainment was provided by soloist Mrs. Jean Hammond and accompanist Mrs. Wm. Duxbury. Santa Claus (Lion Don Huxtable) and a number of the Lions provided the comedy to complete a most enjoyable program.

FOR
China & Crystal
that is unsurpassed in quality and design
SEE
SHERIDAN
JEWELLERS
38 Main St. E. — 640-1650
Stouffville



BUY THAT NEW CAR

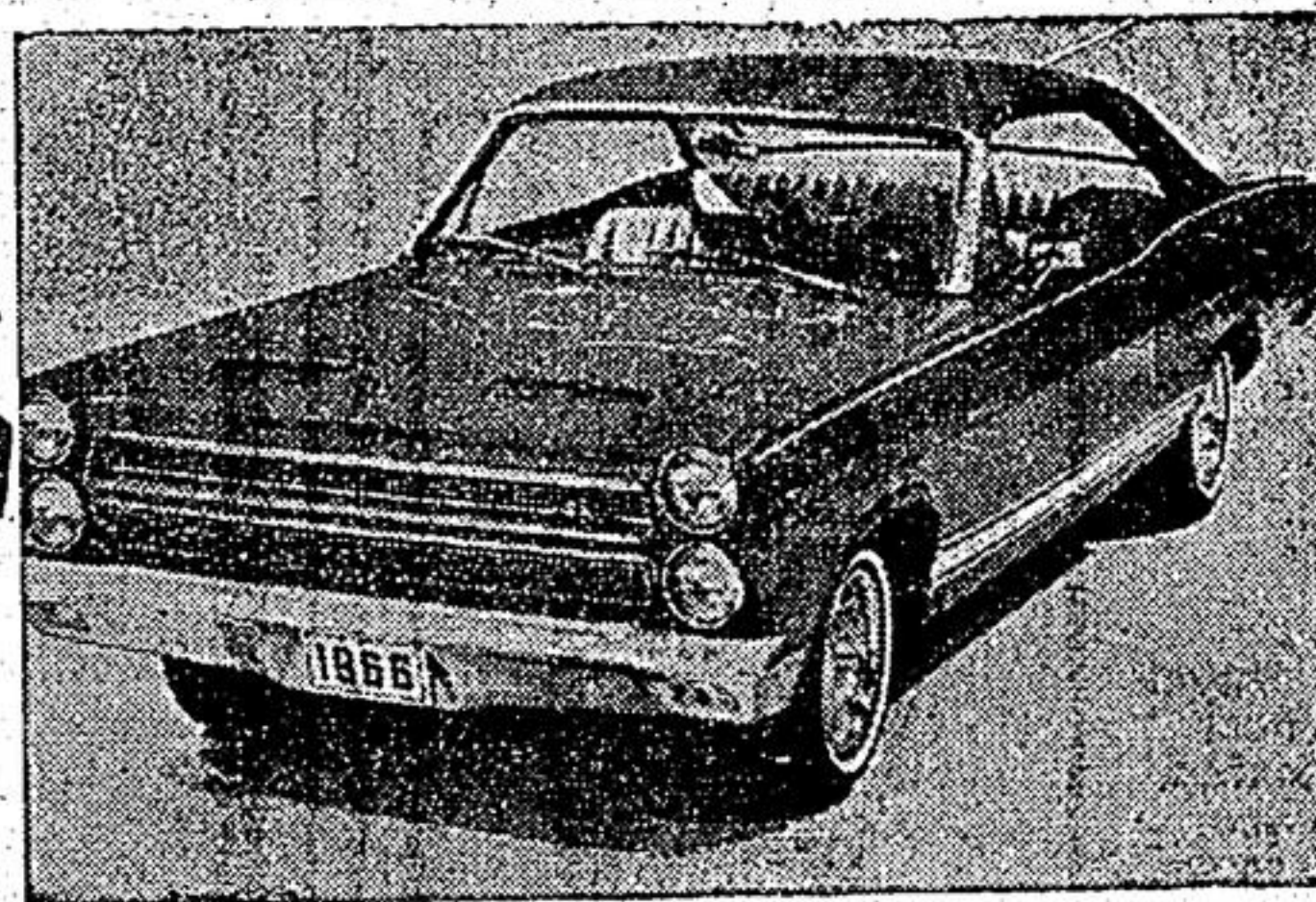
For Christmas
NO PAYMENTS UNTIL

FEBRUARY, 1966



Test Drive The Car of Your Choice
Today . . . The Most Wanted

FORD



MERCURY — METEOR

Line of

COMET

METEOR

Cyclone GT, Cyclone, Callisto, Comet 202 Series, and the all-new Capri.

Montclair, Montclair 533, Rideau and Rideau 500.

MERCURY

Montclair and the scintillating Park Lane line.

UNDOUBTEDLY THE GREATEST CARS
On The Road Today!

A TEST DRIVE WILL PROVE IT!

4TH. CONSECUTIVE YEAR

(1962, 1963, 1964, 1965)

COFFEY & BARTLEY QUALIFIES

For Ford Motor Company's

LARGEST DISCOUNT BRACKET

This means we can truly offer you the best deal on our remaining stock of . . .

6 ONLY — NEW 1965

METEORS

Come On In NOW and DEAL!

LOW RATE FINANCING

or

BANK FINANCING

(Scotia Plan)

ARRANGED ON PREMISES

"Where Quality and Price Meet"

COFFEY & BARTLEY

MOTORS LIMITED

Main St. West — Stouffville — 640-2600

GIFT IDEAS GALORE

SEW AND SAVE FOR CHRISTMAS

If you have a sewing idea in mind for Christmas gifting . . . or . . . are planning to create your own party dress, may we suggest you shop our carefully chosen range of exquisite fabrics.

PARTY DRESS FABRICS

• Satin & Metallic BROCADES \$3.98 to \$6.98

• VELVETEEN \$2.29 to \$2.69

• LACE \$3.98

• TRIMMINGS
• SEQUINS
• VELVET
• FUR
and
• METALLIC BRAIDS

Two stores to serve you . . . stocked to capacity with Christmas gift items that are sure to more than just please. Make a point of visiting us before you decide on any Christmas gift for the home.

AT O'NEILL'S . . . A GIFT FOR EVERY HOME ON YOUR LIST!!

TELEVISION AND STEREO BY ELECTROHOME

Electrohome places extra emphasis on outstanding quality in every one of their sets. Picture tone is perfect, sound is unbeatable, lasting performance is assured. TV and Stereo parade. See one in action now at O'NEILL'S.



TV AND STEREO AT ITS VERY FINEST

The Electrohome Warranty is the finest in the industry—it shows their confidence in their product — protects you to the fullest. Ask about it!!

THE FINEST NAME BRANDS IN

FURNITURE

Now On Display In Our Showrooms

• SKLAR • BRAEMOR • SNYDER

These are respected names in the furniture field. Respected for their styling, comfort and lasting qualities. A visit will prove it . . . see us soon!

FOR DAD AT CHRISTMAS

A RECLINER OR ROCKER FROM \$49.95 up

CEDAR CHESTS

BY LANE \$69.00 up

HOME ITEM IDEAS

- Pillow Cases
- Decorative Sheets
- Towels
- Table Linens
- Decorative Cushions
- Blind Craft Products

LUGGAGE

- BY
- McBRINE
- DOMINION
- SAMSONITE

In single pieces or sets. Perfect for that trip coming up.



LAMPS

So Handy, Practical and Appreciated

TABLE - DESK - FLOOR - POLE - BOUDOIR

- FLOOR COVERINGS
- DRAPERIES
- FURNITURE

- DRY GOODS
- BEDDINGS
- TV & STEREO

O'NEILL'S

2 STORES IN STOUFFVILLE TO SERVE YOU

45 Main West
640-2860

3 Main East
640-2855