

WE LEAD THE WAY WITH THESE

SPECIAL on **GOOD USED CARS**

BIG SELECTION — TOP QUALITY — 1 YEAR GUARANTEE
LOW PRICES! COME SEE and SAVE!

1964 PONTIAC

Parisienne Convertible, V8, automatic, power brakes, power steering, radio, whitewalls and disc. Beautiful mist blue finish with black top.

1963 PONTIAC

Strato Chief 4-dr. Sedan, automatic, 6 cylinder. Cypress green with matching interior. Whitewalls, discs.

1962 FORD

Fairlane Sedan, 4-dr., 8 automatic, washers. Turquoise with matching interior. 31,000 original mileage.

1962 FORD

Galaxie 500 Model, 4-dr. Hard-top, 8 automatic, push button radio, whitewalls, discs. 2 tone brown and white with matching interior.

1962 RAMBLER

4-dr. Sedan, 6 cylinder, automatic, washers, discs. Black with blue interior. One owner car.

1961 PONTIAC

Laurentian Station Wagon, automatic, 6 cylinder, radio. 2 tone brown and beige, with green interior.

1961 PONTIAC

4-dr. Sedan, standard transmission, 6 cylinder, washers. Green with matching interior.

1961 PONTIAC

2-dr. Sedan Strato Chief, 6 cylinder, standard transmission. Maroon, beige interior.

1961 DODGE

Station Wagon, 4-dr., automatic, 6 cylinder, one owner, low mileage. 2 tone red and white.

1961 RAMBLER

4-dr. Sedan, 6 cylinder, standard transmission. Blue with matching interior.

1960 PONTIAC

Strato Chief 2-dr. Sedan, standard transmission, 6 cylinder, radio, washers, discs. Red with gray interior.

1960 PONTIAC

2-dr. Sedan, 6 cylinder, standard transmission. Turquoise with gray interior. Radio, whitewalls and washers.

1964 CORVAIR

Monza, automatic, radio, whitewalls, disc and washers. White with black interior.

1962 PONTIAC

4-dr. Sedan, standard transmission, radio, washers, whitewalls, discs. Dark blue, matching interior.

1963 ENVOY

Station Wagon, 4 cylinder, standard transmission, very economical transportation. White with red interior.

1962 VOLKS.

Deluxe, radio, washers, green with beige interior.

1963 PONTIAC

Strato Chief Sedan, automatic, 6 cylinder, radio, whitewalls, discs, white with beige interior.

1962 CHEV.

2-dr. Sedan, standard, 6 cylinder. White with red interior. Washers.

TRUCKS

1958 DODGE

½-ton, V8 cylinder — Real sound truck.

1953 G.M.C.

2-ton Truck, stake body, excellent tires. All around good farm truck.

1959 G.M.C.

3-ton Truck with hoist, steel platform and racks, good tires.

1962 DODGE

800 Series Truck, full tandem 4/3 complete drop in motors, 30,000 miles, new airbrakes, lining & bearing on rear. Excellent highway truck.

1953 L185 TRACTOR

Saddle tanks and ready to go.

1961 CHEV.

6503 Truck, 175 in. wheelbase, fair rubber. Good farm truck.

1961 VOLKS.

Van. A real truck — a real buy. Low mileage.

1957 CHEV.

4-dr. Sedan, 8 cylinder, automatic, radio. Olive green and white, with black interior.

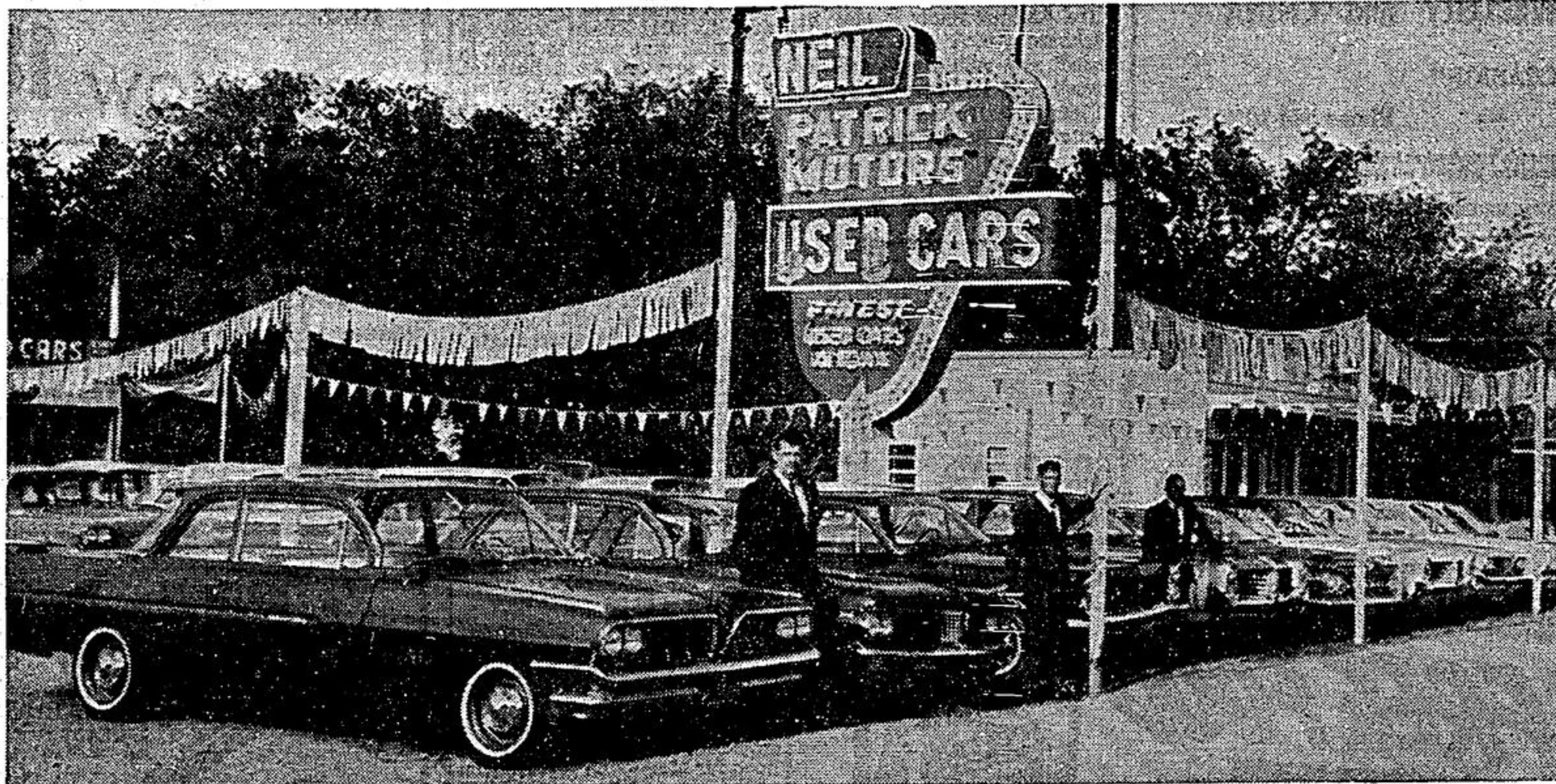
1964 INT.

1300 Series 1 ton, dual wheels, steel platform. One owner truck.

1961 G.M.C.

3 ton Truck with platform and racks, 348 in., 5 speed transmission, 2 speed axle. Real good truck.

BIG SAVINGS ON CARS SHOWN ON LOT



The Main Street lot of Neil Patrick Motors is filled with feature values on quality used cars. Sales men (left to right) Ed Grimshaw, Roy Ward and Bill Dyck will be pleased to serve you.

1960 VAUXHAUL

4-dr. Sedan, 4 cylinder, standard transmission. Cream with blue interior.

1959 STUDEBAKER

4-dr. Sedan, 6 cylinder, standard transmission, radio. Robin egg blue with matching interior.

1959 FORD

4-dr. Custom 300, automatic, 6 cylinder. 2 tone green with matching interior.

1958 METEOR

4-dr. Sedan, 8 cylinder, standard transmission. Brown with matching interior. One owner car.

1958 PONTIAC

4-dr. Sedan, 6 cylinder, standard transmission, whitewalls, discs. 2 tone brown and white with green interior.

1960 FALCON

4-dr. Sedan, 6 cylinder, automatic, radio, washers. Dark blue, white top and matching interior.

1959 FORD

Custom 300 2-dr. Sedan, standard transmission, 6 cylinder, push button radio. Dark blue with matching interior.

1959 CHEV.

Bel-Air 4-dr. Hard-top, 6 cylinder, automatic, radio, whitewalls and discs. 2 tone green and white with matching interior.

1959 PONTIAC

4-dr. Sedan, standard transmission, 6 cylinder, radio, white-walls and discs. Yellow and green interior.

1959 STUDEBAKER

Station Wagon, 2-dr., 6 cylinder, standard transmission. Beige with red interior.

1959 CHEV.

2-dr. Sedan, 6 cylinder, automatic, radio, washers. White with gray interior.

MAKE AN OFFER!

Drop in and talk to our sales staff

YOU BUY WITH CONFIDENCE

CASH — TRADE — G.M.A.C. TERMS

Neil PATRICK MOTORS Ltd. STOUFFVILLE ONTARIO



CORNER 9th and MAIN STREET
PHONE 640-3450

OPEN EVENINGS
 UNTIL 9.30p.m.

MAIN STREET at TRACKS
PHONE 640-3452