

\$1,700,000 H. S. Expansion At Markham To Be Ready For September Term

Students returning to Markham District High School this fall will find twice as much school as they left in June. That's about the size of the expansion program now under way. Besides the immensity of the structure, the students will also be learning in the most modern of surroundings.

The addition, started about one year ago, will cost an estimated \$1,700,000, and will include 10 new classrooms, shops, a second gym, and a cafeteria. Besides the 10 new rooms, three classrooms have been created by the transfer of the Industrial Shops to the new wing.

Principal of the high school, Mr. B. J. Newell, expects the new wing to be fully operational by September although work has been delayed due to the current Carpenters and Bricklayers strike.

Enrollment is expected to be near the 900 mark in September, some 200 students higher than last year. The school has been built to accommodate 1,500.

"We feel that the accommodations will be sufficient for another five years," the principal said. "But, that depends on the rate of growth in the community."

The new addition will divide the learning group into three sections: The Arts and Science; the Science Technology and Trades; and the Business and Commerce. In other words, General, Technical and Commercial.

Although the addition is being placed on the south side of the edifice, construction is taking place throughout the entire school.

To handle the added work from the larger student body, the offices had to be expanded. Therefore, the teachers' lunch room was reconstructed allowing more space for the records and administration. The old offices were converted into guidance rooms.

On the second floor, the Industrial Arts section has been divided into three classrooms.

A new inter-com system is being installed that is directed by a complicated master board located in the main office. It allows speaking to each individual classroom rather than the whole school at the same time.

Modern Shops

In the Science Technology and Trades Department, there will be no less than five modern shops. These include Auto Mechanics, Woodworking, Machine Shop, Electricity, and Drafting.

The Electrical shop is equipped with long narrow desks, each boasting a complex electrical unit, complete with switches, dials, gauges, outlets and a number of other intricate mechanisms. Just looking at it, would make one feel that half the course would be learning how to operate the desk.

In the same room, is the shell of a make-believe house, ready for the students to apply wiring, bells, and inter-coms.

The other shops, not completely furnished, are every bit as impressive. Huge, spacious, and well lighted, they meet all the requirements of the student's needs.

Besides these shops, two other rooms have been added for a special two-year course, Girls' and Boys' Occupational Rooms, as they are called, are designed to give the slow-learner, the basics of a trade.

Business and Commerce

The second floor of the new wing will be used mainly for the Business and Commerce Course. Typing will be taught in two rooms, with two others set aside for Business Machines and Bookkeeping. At present, there is a bookkeeping room and typing room in the front section. They will be retained.

The Commercial Director's office is also located in this section. The remaining six classrooms on the second floor will be used for regular subjects.

Three new Science labs have been constructed, with desks complete with taps, sinks and gas jets.

Besides being used for regular Science periods, the rooms are also designed for specializing in chemistry, physics and biology.

The classrooms are square in shape, and each room comes complete with its own thermostat. Unlike most schools, the windows are smaller and built higher to the ceiling. There is a two-fold reason for this. First, it gives additional wall space for black boards and bulletin boards, and secondly, the sun's

heat does not bear down on students. The floors are marked with six rows of different colored tile to keep desks in line.

There will be no more shifting out to the portable classroom to study music. The new music room, situated where the sounds won't disturb other students, is in its design. It's built in tiers. Three levels, lowest at the front of the room, give the pupils, no matter where they are, a high-level view of teacher and blackboards. A smaller room for the storage of instruments, is adjacent to the music Hall.

The room is located in such a way that loud sounds will either penetrate to the great outdoors or be swallowed up by the electrical "top."

Gym Within A Gym

School's no fun if it's all work and no play, and with the new addition, there will be more recreation with the expanded facilities.

The present gymnasium, divided by a removable wall, was used last year by both girls and boys. This September, however, the gym will be strictly for the young ladies, while the lads take over the new area. The boys seem to be getting the better of the deal. The new gymnasium the same size as the present one, has a large area built over the dressing rooms, that will have unlimited uses. While basketball is being played in one section, and volleyball in the other, wrestling and gymnastics will take place on the upper level.

During scheduled games and tournaments, the upstairs section will be used for spectators. When not in use for this purpose, fold-away partitions close it off from the activity downstairs.

It all boils down to the fact that five different indoor sports can be played in the school, all at the same time.

The new cafeteria will serve short orders only. Students wishing to bring their lunches to school, can purchase the accessories in this room. The present cafeteria, with the kitchen, will continue to serve hot meals.

A number of new entrances have been built into the addition, the major one on the east side of the building, adjacent to the new cafeteria.

Cars can be driven to this entrance by means of an extended driveway. Inside the doors, a large foyer splits up into halls leading throughout the school.

New Track and Field

Six acres of land, purchased recently by the School Board, are also undergoing major renovations and by September, MDHS will have a new cinder track and a large sports field. Without a track, the big high school was producing champion competitors, but now with all the latest facilities, it looks like Markham District could take every title in their class.

Throughout the school, new and modern conveniences are in evidence. Spacious lockers, three faucet drinking fountains, improved lighting, modern wash-rooms and a number of smaller changes, too numerous to mention.

Not only has the appearance of the school changed, now there is talk of changing some of the courses.

It has been suggested that both the Science Technology and Trades and Business and Commerce Courses be lengthened to five years. They are presently four-year courses. Arts and Science can be studied as a four or five year course, depending on the wishes of the students.

Markham District High School students, returning in September will witness many changes, structural, academic and athletic. The Board is confident that improved facilities, completed today, will better prepare the graduate to meet the complex problems of to-morrow.

Bruce Cons. Park In Scenic Rural Setting



Situated within four miles of Stouffville, is the 270 acre Bruce Conservation Area, officially opened on July 17th. The site has already attracted hundreds of visitors and facilities will be made available year-round.

HANDWORK...THE LOOK OF SELIG

- Back pillow of Fortrel® polyester fiber that gives deep seating, wrap around comfort
- All pieces protected against stains by DuPont "Ze Pel"® fabric fluoridizer
- Entire grouping as nationally advertised in HOUSE BEAUTIFUL and BRIDE and HOME
- Color-coordinated fabrics available in our SELIG Special Purchase



SAVE
\$70.00

ON THIS BEAUTIFUL SUITE

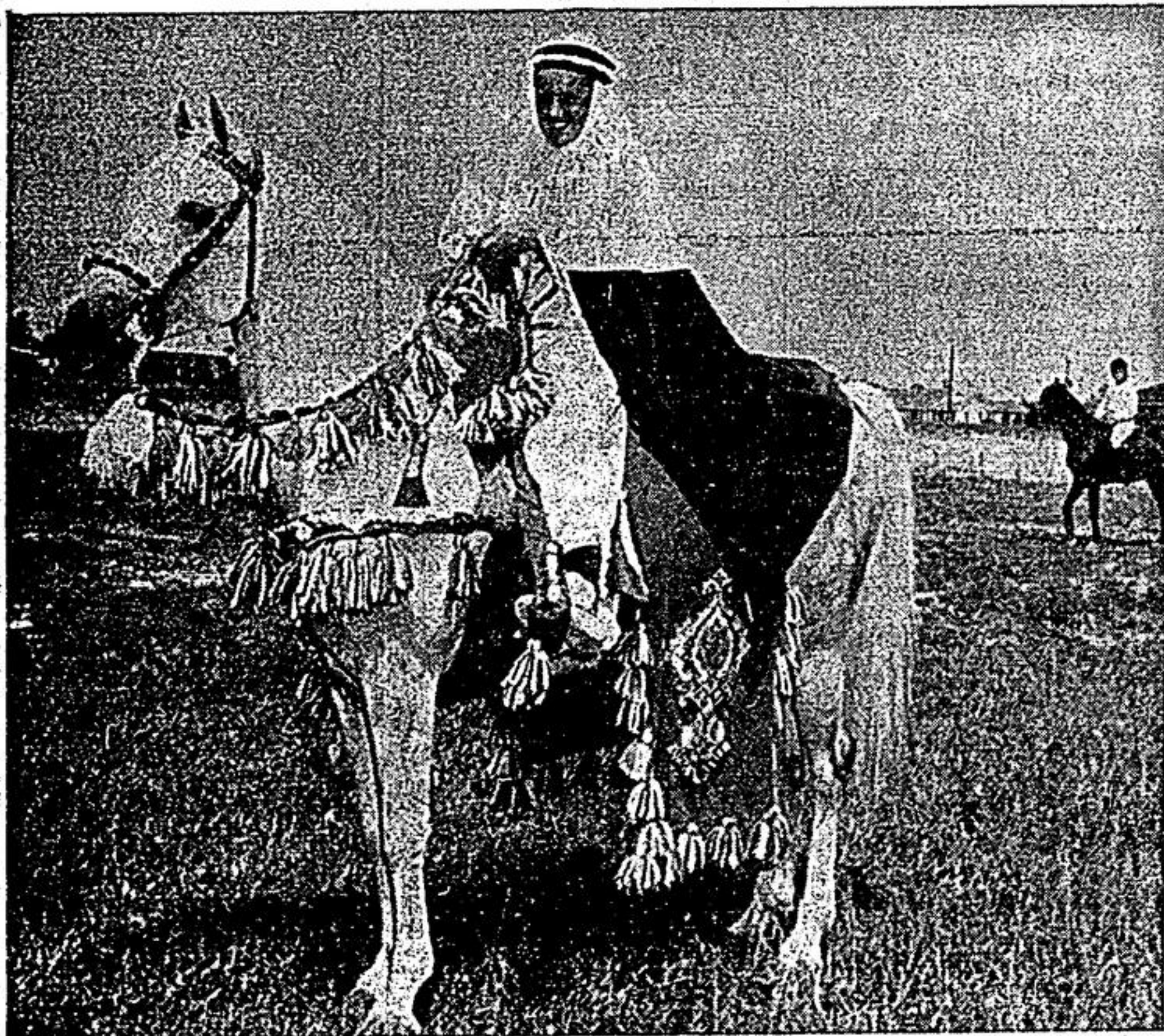
REGULAR PRICE \$499.50

SALE

\$429.50

Once a year we offer a special purchase opportunity to enjoy savings on a complete living room of famous Selig seating. This is the "handwork" look: full, rich back pillows of extra soft luxurious Fortrel®... elegant, exclusive fabrics professionally color-coordinated print and plain texture... both protected against stains by DuPont "Ze Pel"®. The dramatic wood cradle sofa is richly accented with crown back pillow. The Mr. Chair is scaled for six-footer seating comfort — fully 2" deeper, wider and higher with cushions of resilient Rubber "N Foam. Now for a limited time enjoy our Special Purchase opportunity to give your living room your choice of fabric coordinates in Selig nationally advertised coordinated design. A longer 95" sofa is also available at \$30 additional.

Wins Arabian Native Costume Class



Regardless of whether the Judges were looking at this sleek gray stallion "Sahdine" or its rider, pretty 26 year old Jill Barton of Unionville, they both were worthy winners in the Native Costume Class at the All Arabian Horse Show in Markham on Saturday. The horse is owned by Mr. Charles Simmons, conc. 5 Markham. In addition to topping this event, Miss Barton also took the Arabian high-points trophy for the third straight year and now retains the award. An estimated 1,000 persons attended the show that featured a record 104 entries. —Staff Photo.

The Pause That Refreshes



It would appear that this group of girls may be their own best customers as they set up a lemonade bar last week at the corner of Fairview and Rupert Avenues. But a salesman or salesgirl in this case, must know the quality of her own product and 6 year old Ann Marie Heatherington (left) accepts a refreshing sample poured by 7 year old Marlene Boyd. Marilyn Boyd and Judy-Ann Hopper, both 7, wait their turn. —Staff Photo.

O'NEILL'S

2 LOCATIONS on STOUFFVILLE'S MAIN ST.

45 Main St. W., Phone 640-2860 — 3 Main St. E., Phone 640-2855