

WEST END BARBER SHOP
HOURS:
 Tues., Thurs., Fri., 8 a.m. till 9 p.m.
 Wed. and Sat., 8 a.m. till 6 p.m.
 Len, David and Bill Keeping
3 REGISTERED BARBERS
 153 MAIN ST. W. — STOUFFVILLE

TRIBUNE Classified Ads Are Tops

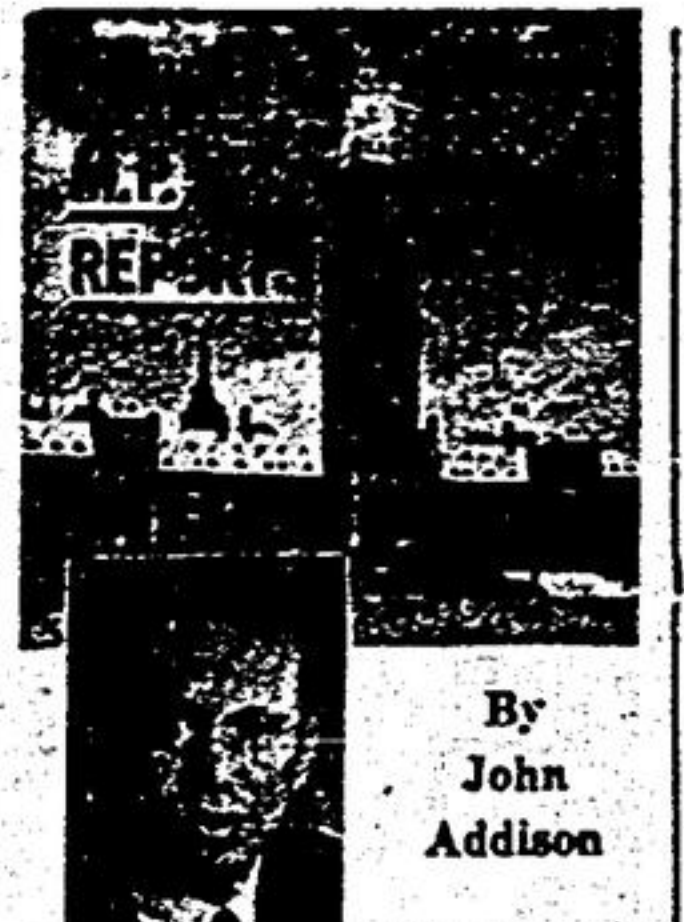
NEVILLE APPLIANCES
"FOR THE BEST"
 Our Service Excels
 Our Prices Match "The Rest"
 Our "Year Guarantee" Sells
ADMIRAL — ZENITH
LOWREY — SIMPLICITY
 T.V. — Radio — Hi-Fi — Organ
 Kitchen and Laundry Equipment
640-3395

L.P. GAS
 Now the conveniences of modern living are yours with L.P. gas — delivered anywhere for ranges, water heaters, refrigerators, etc. L.P. gas is thrifty, too!
ALTANE PROPANE GAS AND APPLIANCES
 216 Markham Rd., Richmond Hill
 Phone AV. 5-5281 — Toronto WA. 3-5851
J. R. ALTY — STOUFFVILLE 640-1874

A PRAYER for the NEW YEAR
 Let us all pray for this New Year to be peaceful and prosperous!
 Thank you for letting us serve you.
F. G. ALSOP Insurance Agency
 STOUFFVILLE, ONT.

PUBLIC SCHOOL BOARD of the Township School Area of Whitchurch requires a SECRETARY-TREASURER
 Preferably experienced in Public School Administration.
 Salary open for Negotiations.
 Duties to begin January, 1965.
 Written applications should be addressed to:
PUBLIC SCHOOL BOARD OF THE TOWNSHIP SCHOOL AREA OF WHITCHURCH OFFICES, R.R.1 GORMLEY, ONT.
 Applications must be received not later than December 29th, 1964.

Markham **ROXY** Markham
 PH 294-3355 PH 294-3355
STARTS XMAS NITE — FRI., DEC. 25 THRU WED., DEC. 30
 IN WIDESCREEN TECHNICOLOR
VIVA LAS VEGAS
 Elvis Presley — Ann Margret
 also 'THE SOUND OF SPEED' in color and Cartoon
 2 Complete Shows at 7 p.m. and 9 p.m.
BOXING DAY MATINEE
 SAT., DEC. 26 — 2 P.M. — ABOVE SHOW
 'HOW THE WEST WAS WON' starts Thur., Dec. 31



By John Addison

Christmas the time of year when we all remember the beginning, think of the past, and anticipate the future. We had the opportunity this year of visiting Israel and travelling near the Holy City through Nazareth to the Sea of Galilee. There I stayed at a kibbutz on the Israel Jordanian border, where fighting had broken out the day before. An historic land full of the memories of Jesus Christ and here almost two thousand years ago man gave meaning to our civilization.

When we think of the words: "Peace on Earth Good Will Toward Men", Canadians are proud of their contributions to maintaining world peace and the betterment of man's life. For years we have had the technical ability to manufacture and assemble atomic weapons, we have not done this but rather have turned our efforts towards the peaceful use of the atom. Our prime purpose in advocating a United Nations peace keeping force with Canada making a full contribution is to settle international disputes before any escalation takes place. Canada next year has pledged \$0 million dollars to the Colombo Plan in South Eastern Asia to initiate a higher standard of living in these underdeveloped countries.

As a person travels through foreign lands, your prospective broadens and it becomes abundantly clear that the underdeveloped countries' main concern is to defend themselves, maintain their independence, and raise their standard of living. They look to us and the United States for support. To keep us strong both militarily and economically is in their best interest and the overriding considerations of the Governments in Ottawa and Washington must be the predication of this principle.

1964 has been a good year for Canada. Employment is at an all time high, unemployment on a seasonally adjusted basis is the lowest it has been since November 1956. Canadian business is expanding at a record rate and has never been so prosperous. Construction and the house building industry is booming; most important of all our exports are much higher than they were a year ago, which was a record.

As a result of the growth in our economy, we have been able to further advance social schemes such as youth allowances, student loans and the Canada Pension Plan.

What of the Future
 The first half of 1965 appears to be good. It will be up to Finance Minister Walter Gordon with his budget in March to insure continual expansion for the full year and well into 1966. The recent armed cuts by the Soviet Union and the renewed efforts by the United States to negotiate a further test ban treaty should produce a thaw in the cold war. Obviously pockets of unrest will remain but this is to be expected particularly with emerging nations. It appears now that the House of Commons will recess until the middle of February, during this six weeks I will make every effort to travel about our constituency and speak with you. If there are any particular problems that you would like to discuss with me, I can be reached at my home in King at 773-5193 or my office in Richmond Hill 884-1351. "May the roads rise with you, May the wind be always at your back And may the Lord hold you in the hollow of His hand." A very Merry Christmas and a Happy New Year.

Early Cards Bore Familiar Message

Christmas cards were not very popular for some two decades after they first appeared in England, in the 1840's. Very little is known of the earliest cards, except for two primitive prototypes found in the British Museum. These two bear the same message of peace and good will, which hasn't been improved upon, even in the modern cards we favor today.

Luther Simulated Christmas Scene

Most everyone has heard the story of Martin Luther and the Christmas tree. Luther lived from 1483 to 1546 and, so the story goes, was one night so impressed by the sight of snow-covered evergreens sparkling in the moonlight that he returned to his home and tried to reproduce the memorable scene for his family. He chose a small evergreen tree and, to simulate the reflections of the starlit heavens, he attached a number of lighted candles.

Christmas trees, of course, did not become popular until years later.



EGG NOG
 Eggnog's popularity is such that at Christmas and New Year's, the drink can be found in nearly every average American home. It is generally believed that Eggnog came to us from the Old English sack-possie, a hot drink which contains the same ingredients — milk, eggs, sugar and nutmeg. No one really knows who invented Eggnog. Researchers just say that it goes 'way, way back and like Topsy it "grew and grew."
 The flavorful taste of Eggnog is not the only reason for the drink's popularity. Eggnog is easy to make, it goes a long way, and it allows the hostess to have as much fun as anybody else without having to worry about the guests. Eggnog is a serve-yourself drink, and most folks seem to prefer to fill their cup themselves.
 Eggnog is flexible. That is, you can make a lot of it in one batch if you've got a large enough punch bowl and your refrigerator is particularly spacious. On the other hand, Eggnog can be made in smaller quantities — which are equally delightful and flavorful.
 A typical recipe would include:
 6 eggs, separated 2 cups milk
 ½ cup sugar ½ teaspoon salt
 2 cups light or whipping cream 2 teaspoons vanilla
 Freshly ground nutmeg
 Beat egg yolks and sugar until thick and lemon-colored. Beat in cream, milk, salt, and vanilla. Beat egg whites until they hold stiff peaks; fold into egg yolk mixture. Served in chilled punch bowl; sprinkle with nutmeg. (Makes 2½ quarts.)

HAL'S SNACK BAR
 Stouffville
 Hello!
 Just popping in to wish you a holiday abounding with happiness.

General Grant Tree Among Most Famous
 One of the most most famous Christmas trees is the General Grant tree, located in General Grant National Park, 64 miles east of Fresno, California. This tree was designated the official national Christmas tree for Christmas Day, 1925. The General Grant tree is estimated to be about 270 feet high and services are held under the tree each year. Due to severe weather conditions usually prevalent in the area, however, the number of visitors is somewhat limited.

Friendly Folks Herald Approaching Holiday
 You can often detect the nearness of Christmas in the attitude of the people about you. Elevator operators become more cheerful. Bus drivers will wait that extra moment for you to catch your ride. Store clerks are more courteous and helpful. The greeting of friends and neighbors is more enthusiastic. Most everybody has a good word to say about everyone. Things just seem brighter and more cheerful everywhere you turn.

EARLY CARD
 What some investigators believe to be the first card printed specifically as a Christmas card was the one designed in 1843 by J. C. Horsley for Sir Henry Cole. The card had one center illustration and two side panels. The center panel depicted an English family raising wine glasses to toast a missing friend. Scenes on the side panels showed the feeding of the hungry and clothing of the naked. It was the only card Sir Henry Cole ever had designed — reaction to the toasting scene from temperance-minded friends was far from what he had expected.

Christmas cacti will drop their flower buds in a too dry atmosphere. Daily syringing with a mist of water will often prevent this.

OLD-FASHIONED Christmas Wishes
 We wish you the happiest of holidays, filled with all the friendly warmth of a good old-fashioned Christmas.
Stouffville Antique House
 EVELYN and BERT JACKSON

Peace
 On earth, peace, good will to all men. A joyful Christmas!
FRETZ BROS. BUTCHERS
 R.R.3 Claremont, Ont.

A Christmas Wish
 We wish to thank you for your good will and hope your Christmas is a merry one.
TAYLOR'S FUELS
 Stouffville, Ont.



GOOD WISHES FOR Christmas
 Children's cheery voices raised in Christmas song express the good will we feel for all our friends. Thanks and Merry Christmas!
Stouffville District Credit Union



Christmas Joy
 In the Madonna and Child, mankind sees an ever-present emblem of the love of God, the peace of Christmas. May joy be yours at this holy, happy time.
Maple Leaf Dairy Co. and Staff
 STOUFFVILLE, ONT.

TO WISH YOU A JOYFUL CHRISTMAS
 Let us remember, as we celebrate His birth, that our duty to mankind is ever growing in a world that gropes for peace and understanding. With trust in Him... and with the spirit of love, we must renew our faith and dedicate our efforts to accomplish that ideal.
Frank and Ted Ryfa
EAST END GROCERY
 STOUFFVILLE