

Mongolia Public School Around Year 1900



This well-preserved photograph of pupils who attended the Mongolia Public School (S. S. No. 22) Markham Twp. around the year 1900 was presented to The Tribune for publication by local resident, Mrs. Ernest Taylor. The boys and girls are (left to right) — Front Row (1) Geo. Vanzant; (2) Frank Timbers, (3) LaVerne Eagleson, (4) Flossie Timbers, (5) Joe Brownsberger, (6) Henry Madill, (7) Annie Wideman, (8) Clay Tarr, (9) Cliff Winn, (10) Sam Brownsberger, (Second Row) (1) Percy Wideman, (2) Truman Eagleson, (3) Wilkie Haines, (4) Ezra Brownsberger, (5) Hazel Madill, (6) Annie Brownsberger, (7) Frank Winn, (8) Gertie Vanzant, (9) Allan Wideman, (Third Row) (1) Annie Madill, (2) Vida Ricketts, (3) Joe Betz, (4) Curtis Eagleson, (5) Verna Irwin, (6) Teacher, Miss Pilkey, (7) Art Vanzant, (8) Geo. Madill, (9) Sam McMullen, (10) Win Timbers, (11) Melville Turner, (Fourth Row) (1) Dave Tran, (2) Fanny Tran, (3) Ruth Miller, (4) Earl Dorley, (5) May Ricketts, (6) Bertha Winn, (7) Miss Grice, (8) May Bowers, (9) Lloyd Turner, (Fifth Row) (1) Elva Holden, (2) Miss Grice, (3) Ruth Burkholder, (4) Rhoda Madill, (5) Frank Ricketts, (6) Fred Fugh, (7) Emma Winn, (8) Mary Irwin, (9) Eli Brownsberger, (Rear Row) (1) Stanley Timbers, (2) Roland Winn, (3) Delbert Holden, (4) Fred Winn, (Also second row) (10) Gussie Hoover, (11) Mary Timbers.

PLANT GLOXINIA TUBERS NOW

The Gloxinia is one of the most beautiful house plants. It has large, velvety leaves and large, broad, tubular flowers of many colours. It may be grown from tubers, cuttings or seeds. Horticulturists with the Ontario Department of Agriculture suggest starting tubers this month.

Plant the tubers with their crowns just showing, in a mixture of equal parts peat and sand. As soon as the plants are large enough replant them in 5 to 6 inch pots. Use soil mixture consisting of 1 part soil, 1 part peat and one half part sand. Set the plants at the same depth as in the starting mixture. The plants need a well-lighted location but should be shaded from direct, strong sun. The temperature should be kept at 60 to 65 degrees F. Keep them moist but do not overwater and avoid wetting the foliage.

Gloxinias bloom from May to September. In the fall, gradually dry and rest the tubers in pots of soil. The temperature should not fall below 45 degrees F., then in the following February they may be restarted. Gloxinia plants may be started from leaf cuttings. A cutting when rooted will produce a tuber and then a plant which will flower in about 5 months.

Is your desk a mess? Get a desk organizer from Tribune Office Supplies.

PRESENTATION
A rather unique presentation was made recently at Listowel when a large pulpit Bible was presented to the congregation of the United Missionary Church from the congregation of Knox Presbyterian Church, Rev. H. S. Hallman, formerly of Stouffville accepted the gift. The Bible, to commemorate the erection of the new United Missionary Church edifice was presented "as a token of the eternal Christian interest and the unity in Christ which the congregations share."

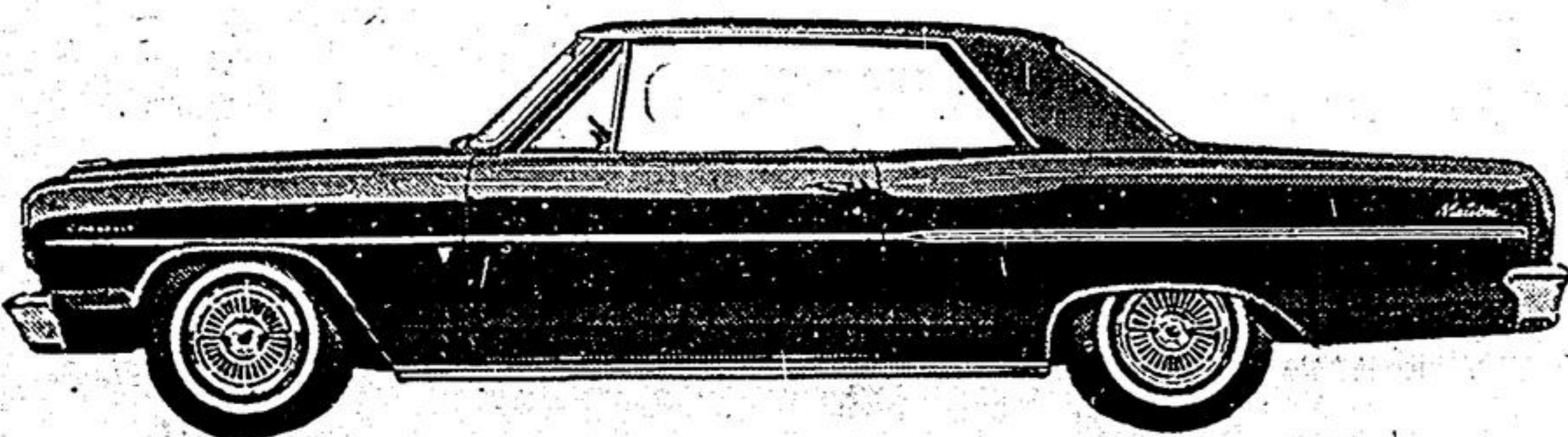
Chevrolet built the new Chevelle to fit into all your plans

(Including your budget and your garage)

Chevelle fills the bill! It's a new-size, low-price car, tailor-made for people who want a combination of features that other cars simply don't have. Here's what we mean: Chevelle's beauty adds a new dimension to functional design! Chevelle's stylish curved-glass side-windows mean interior measurements within an inch of most regular-size cars. Chevelle slips easily into tight spots—and out of them! Chevelle's jaunty 115" wheelbase is sized right for city traffic—makes parking practically effortless. Chevelle's power is made to measure with Sixes or V8s, transmissions for every taste, and a full array of extra-cost options. Chevrolet reliability keeps Chevelle fit for the future with proven safeguards like Body by Fisher and Magic-Mirror finish. See your Chevrolet dealer and try on a Chevelle for size—he's got 11 models, including low-price convertibles, sedans, sport coupes and wagons—one's bound to fit!

Malibu Sport Coupe

A GENERAL MOTORS VALUE



New CHEVELLE!—a great highway performer from CHEVROLET!

See your local Chevrolet dealer

L-964C

Be sure to see Bonanza on the CBC-TV network each Sunday. Check your local listing for channel and time.

GILES Chevrolet - Oldsmobile Limited

STOUFFVILLE, ONTARIO

SCHELL'S RED & WHITE STOUFFVILLE



Grand Opening

MARCH 19 - 20 - 21

To the Citizens of Stouffville and surrounding district:

We have enlarged and modernized our food market. We extend an invitation to everyone to come in and visit us Thursday, Friday and Saturday, and avail yourself of the many FREE offerings on this gala opening occasion. We are pleased to announce that we have joined the Red & White organization which will assure you of high quality groceries, VALUE CHECK'D meats and fresh from the market produce, plus Red & White low Every Day Prices.

WEEK-END FEATURES — ALL 3 DAYS WHILE THEY LAST

NEILSONS
Jersey Ice Cream
FREE!

One pint free with purchase of one at regular price.

OGILVIES
Twinkle Cake Mixes
FREE!

Pkg. free with purchase of one at regular price.

HOSTESS
Potato Chips
FREE!

6-oz. box free with purchase of one at regular price.

ROSE
Sweet Mix Pickles
FREE!

16-oz. jar-free with purchase of two at regular price.

FREE!

Lucky Draw each day for 2 beautiful Miss
SUNBEAM DOLLS

FREE!

to the first 200 Lady Shoppers
a Sunbeam
NEEDLE KIT

FREE!

SPECIAL GIFTS
For All Children
Accompanied by Adults.

FREE!

FREE Loaf of Aunt Mary's
Full 24-oz. Loaf
BREAD
with purchase of one at regular price.

THURS., MAR. 19th — WHILE THEY LAST!

FREE a 12" roll of Stuart House
FOIL WRAP
with the purchase of 2 rolls at regular price.

FREE big 8 pak Maple Leaf
WIENERS
with purchase of pkg. Sunbeam Wiener Buns at reg. price.

FREE!

FREE Loaf of Aunt Mary's
24 oz.
BREAD
with purchase of one at reg. price.

FRI., MAR. 20th — WHILE THEY LAST!

FREE McCain's Frozen
9-oz. pkg. with purchase of 2 at reg. price.
FRENCH FRIES

FREE!

FREE Loaf of Aunt Mary's
24 oz.
BREAD
with purchase of one at reg. price.

SAT., MAR. 21st — WHILE THEY LAST

FREE 1-lb. pkg. of Jewel
with purchase of one at reg. price.
SHORTENING

MEAT FEATURES

ROUND — SIRLOIN — T-BONE

STEAKS lb. **75¢**

CHICKENS lb. **29¢**

FRYERS 2½ to 3-lb. average.

Grand Opening Specials

DELSEY

TOILET TISSUE

2c off Twin Pak

8 rolls \$1.00

JAVEX

LIQUID BLEACH

32-oz. Bottle

23¢

Fresh Farm Produce

GOLDEN RIPE

BANANAS

lb. **10¢**

SUNKIST

ORANGES

cello bag
3 doz. **89¢**

FROZEN FEATURES

Frozen PIES

SUPREME FRESH
full 24-oz. size

APPLE
RAISIN
CHERRY
BLUEBERRY

each **39¢**

VISIT OUR STORE ON THE OCCASION OF OUR GRAND OPENING

More Treatment Centres For Crippled Children

An estimated one-third of Ontario's crippled children cannot take full advantage of the techniques that have been developed to help them overcome their handicaps.

They are the children who live outside of those areas where treatment centres are located. They are the children in those rural and remote areas of the province who require residential care. They are the children for whom our overcrowded general hospitals have no room when surgery or other

corrective procedures are completed.

In keeping with the demands being placed on those treatment centres already established in some of the large Ontario cities, a provincial treatment centre was established in Metropolitan Toronto. Extremely difficult cases are referred to this Centre from all parts of the province where their problems will receive the attention of leading medical, dental and surgical specialists; where they may remain for long-term treatment

and observation; and where crippled children residing in a heavily populated part of central Ontario will have for the first time, adequate out-patient services available.

These facilities can be found at the Ontario Crippled Children's Centre—the rehabilitation headquarters for thousands of children.

During this Easter Season, your recognition and assistance for the 1963 Easter Seal Campaign is needed to guarantee that more of your children will

graduate to young adults, able to take their place in the world.

If we make the best of little opportunities we find ourselves more able to accept larger ones. newspaper.

The national economy for efficient operation needs both production and distribution. Advertising is the cheapest means of obtaining maximum distribution.