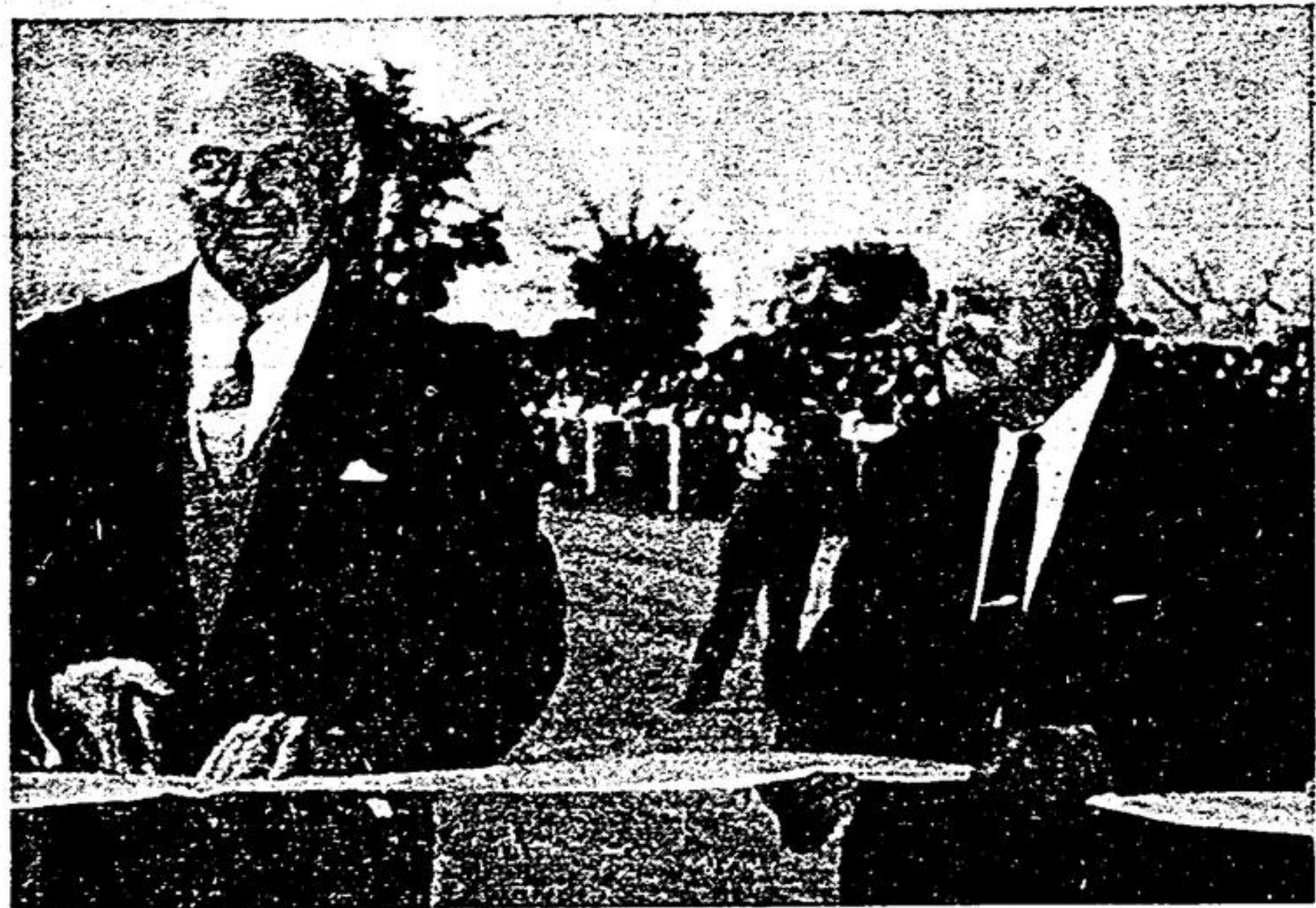


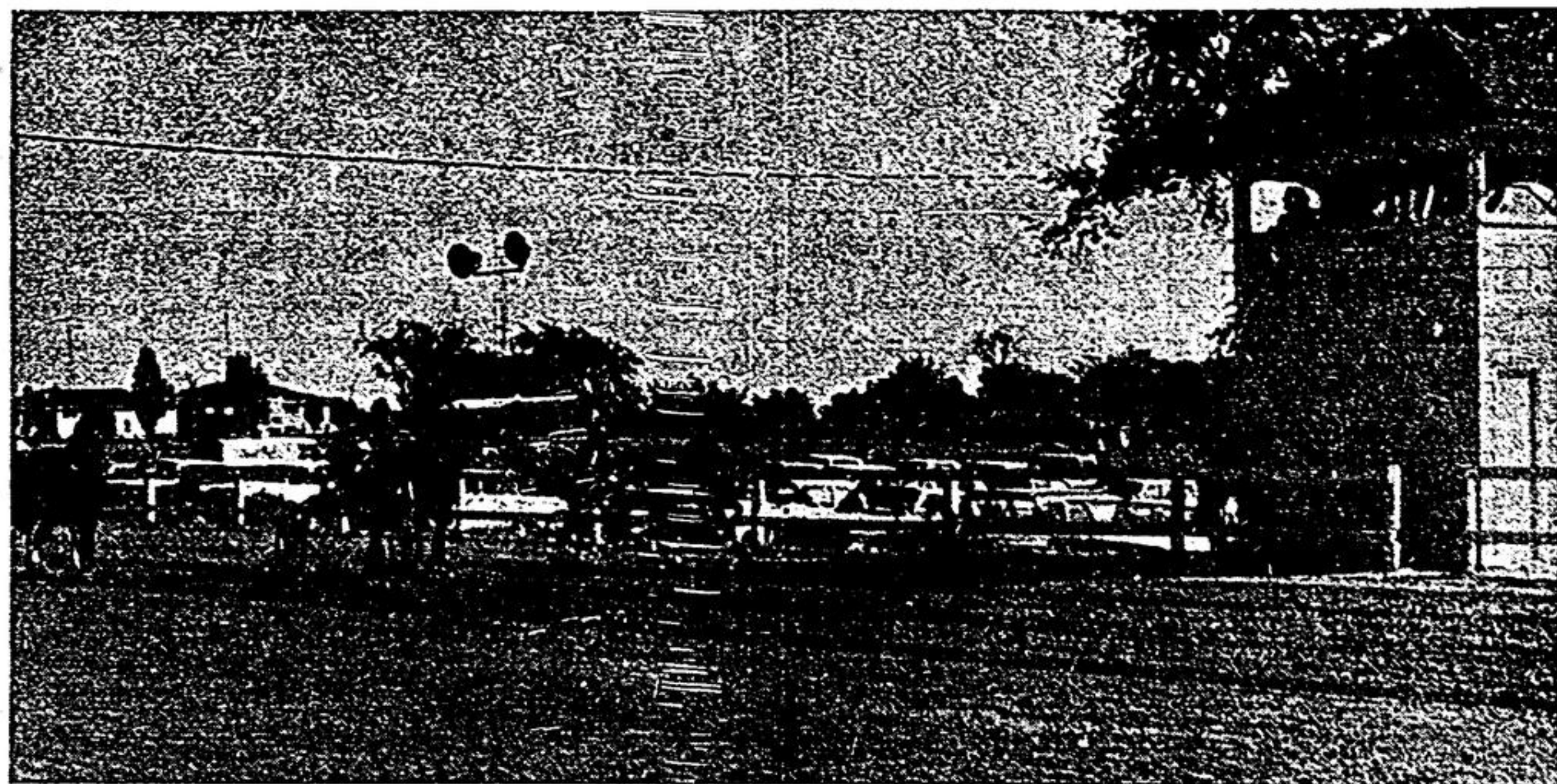
# Markham Fair Through The Camera Lens



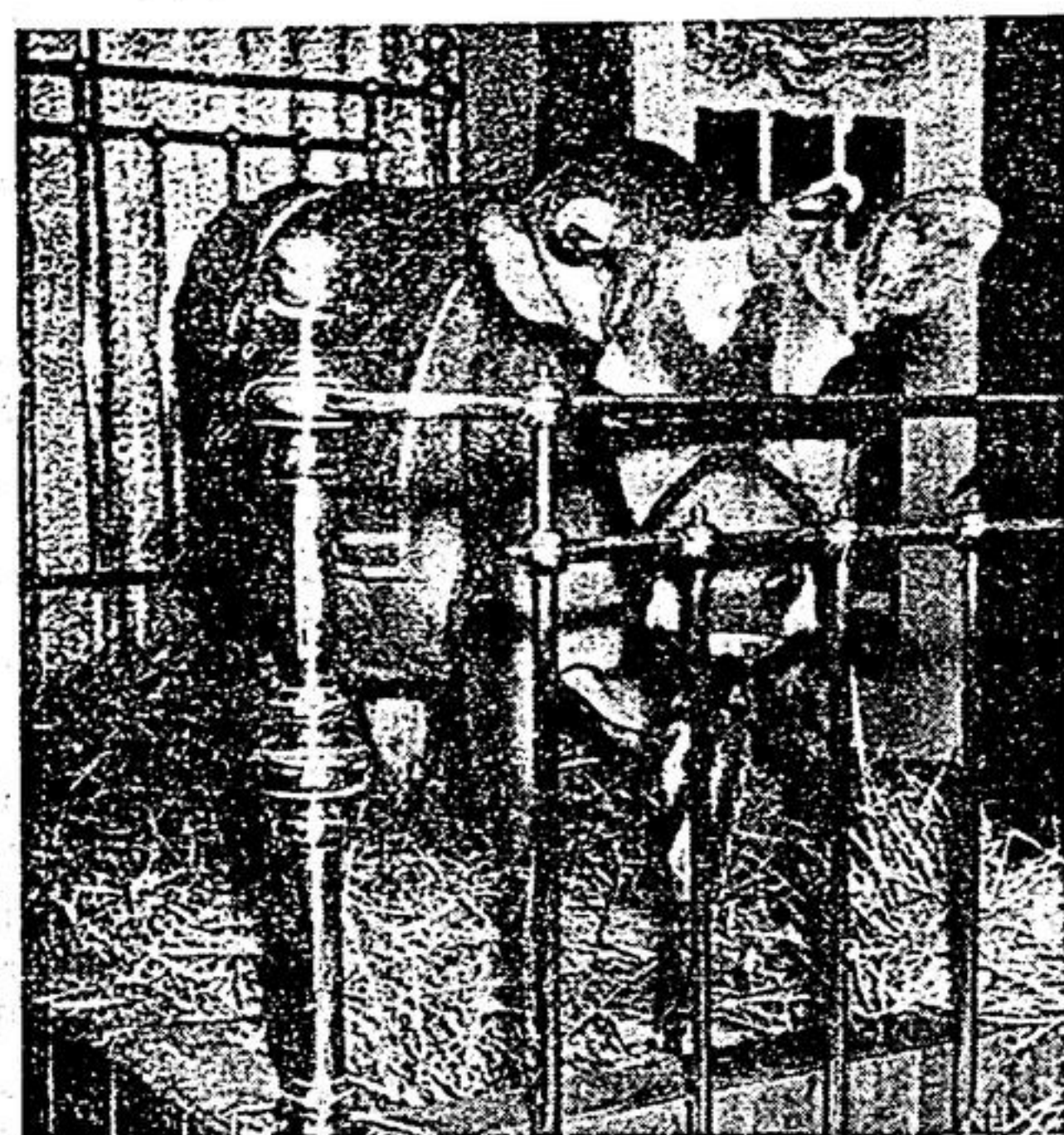
The new race track at Markham Fair, completed this summer, was officially opened on Saturday afternoon by the Lieut. Governor of Ontario, Hon. Earl Rowe. Assisting in the ribbon-cutting ceremony is Major A. A. "Lex" Mackenzie, M.P.P. York North.



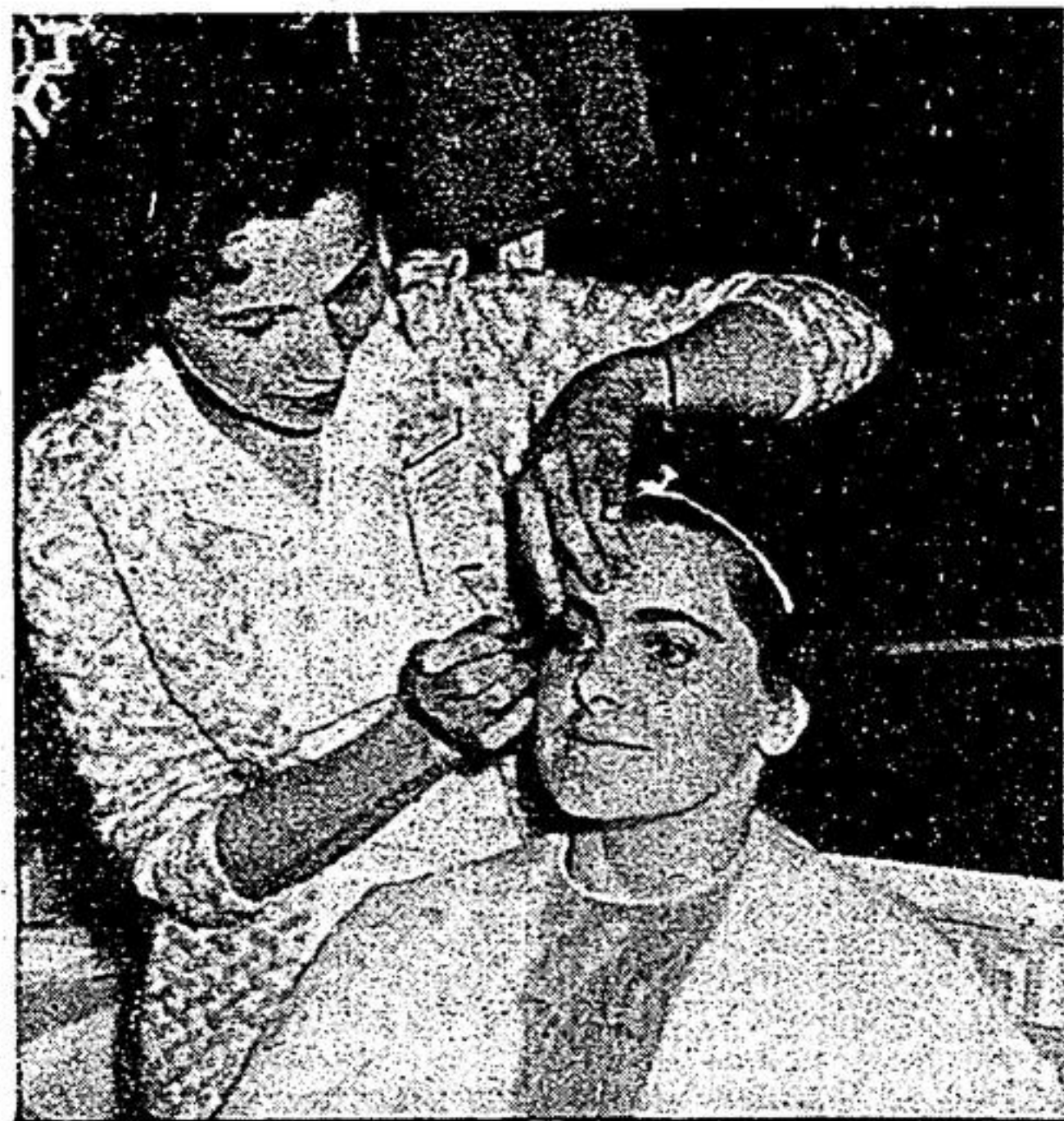
Markham Fair was officially opened on Friday afternoon by T. Richard Hilliard, Deputy Minister of Energy and Resources.



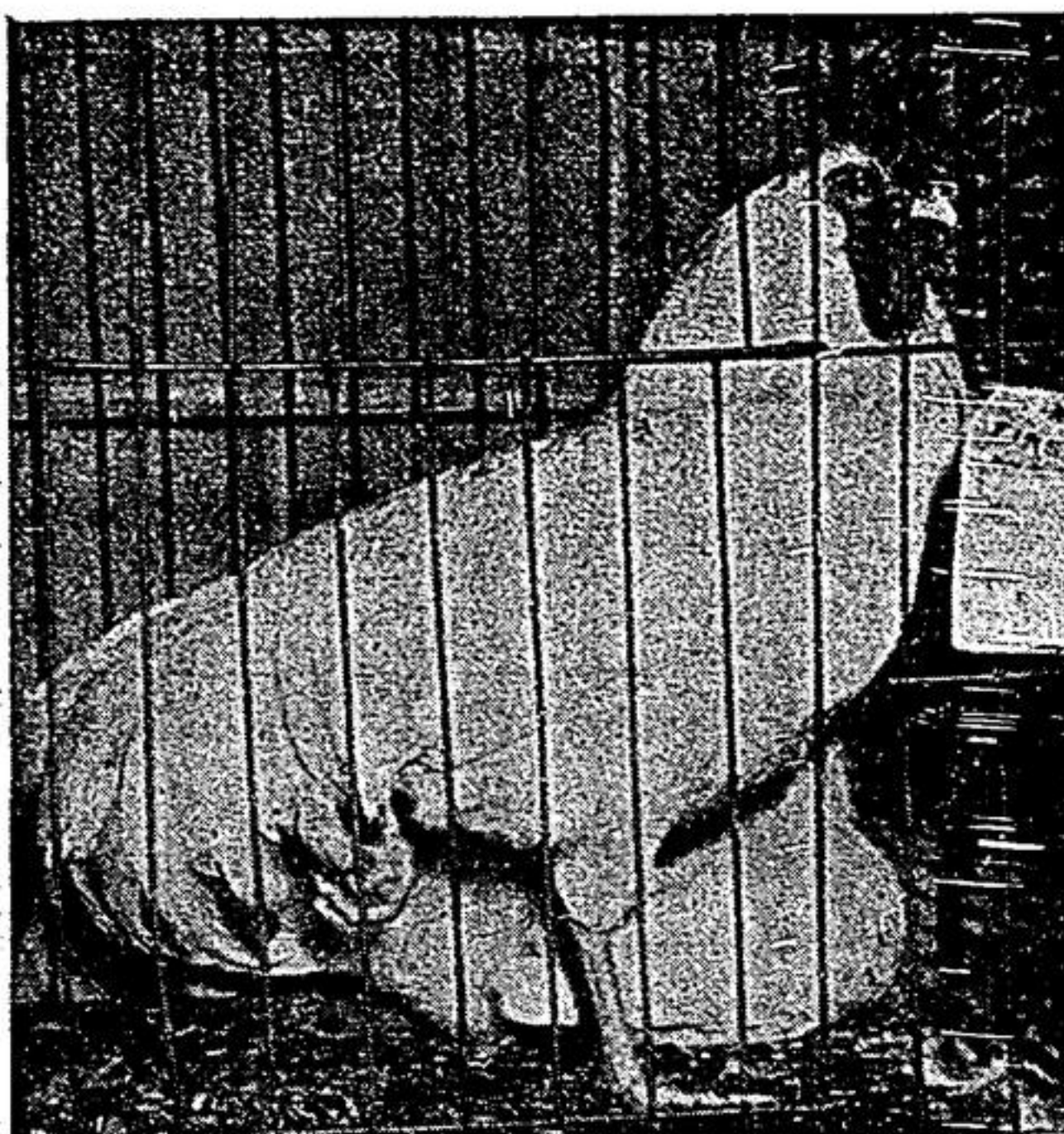
This stretch drive by three horses was typical of the many races at Markham Fair on both Friday and Saturday. Although the oval shaped track was completed only recently, it was in excellent condition and brought favourable comment from drivers and spectators. The keen competition was one of the top attractions at the Fair as thousands lined the rail and packed the grandstand to capacity.



Hundreds of children and adults viewed Elsie the Borden cow and her twins. Although admission to Elsie's boudoir was free, donations were accepted by the Markham Kiwanis Club to assist with minor hockey work in the community.



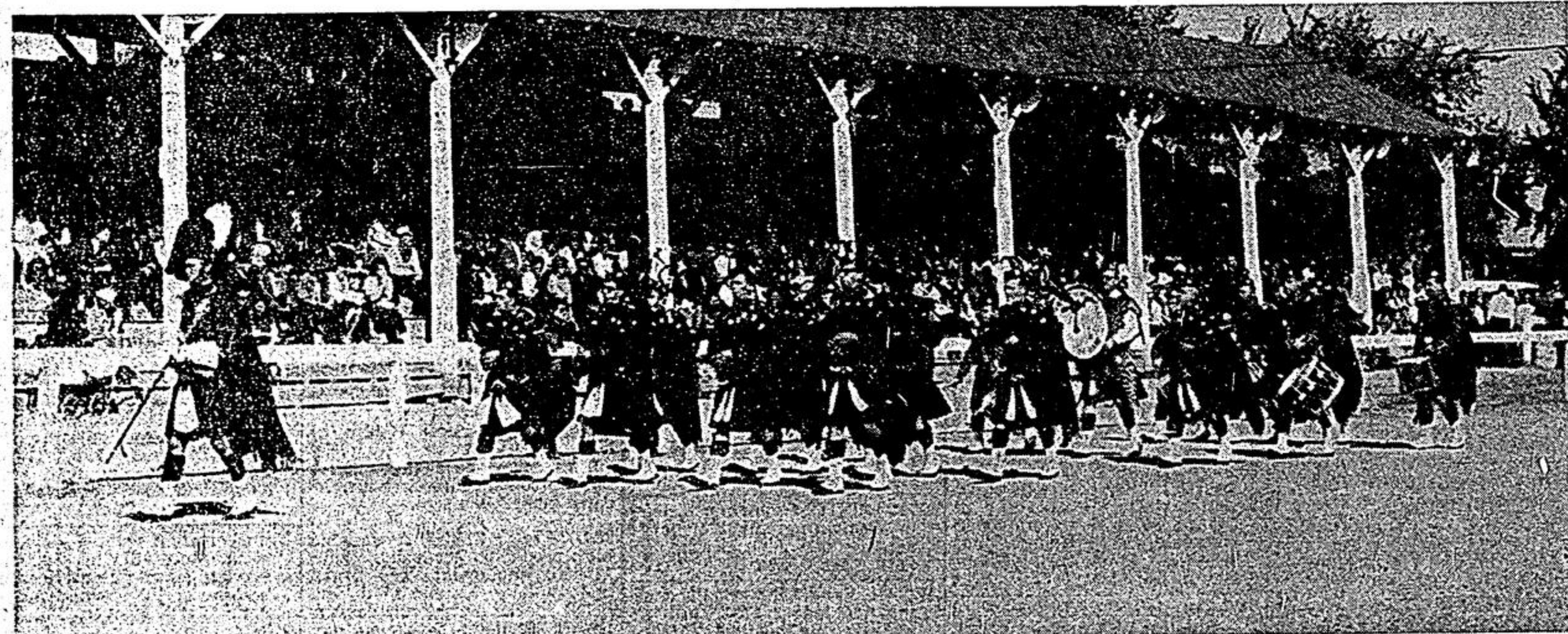
The Community Centre Building, officially opened only four weeks ago, provided ample room for the many display booths. One that attracted considerable attention was the Studio Girl Cosmetics. Shown here, Mrs. Mary Jacksie provides an on-the-spot demonstration with Mrs. Wilma Tremblay of Markham, her model customer.



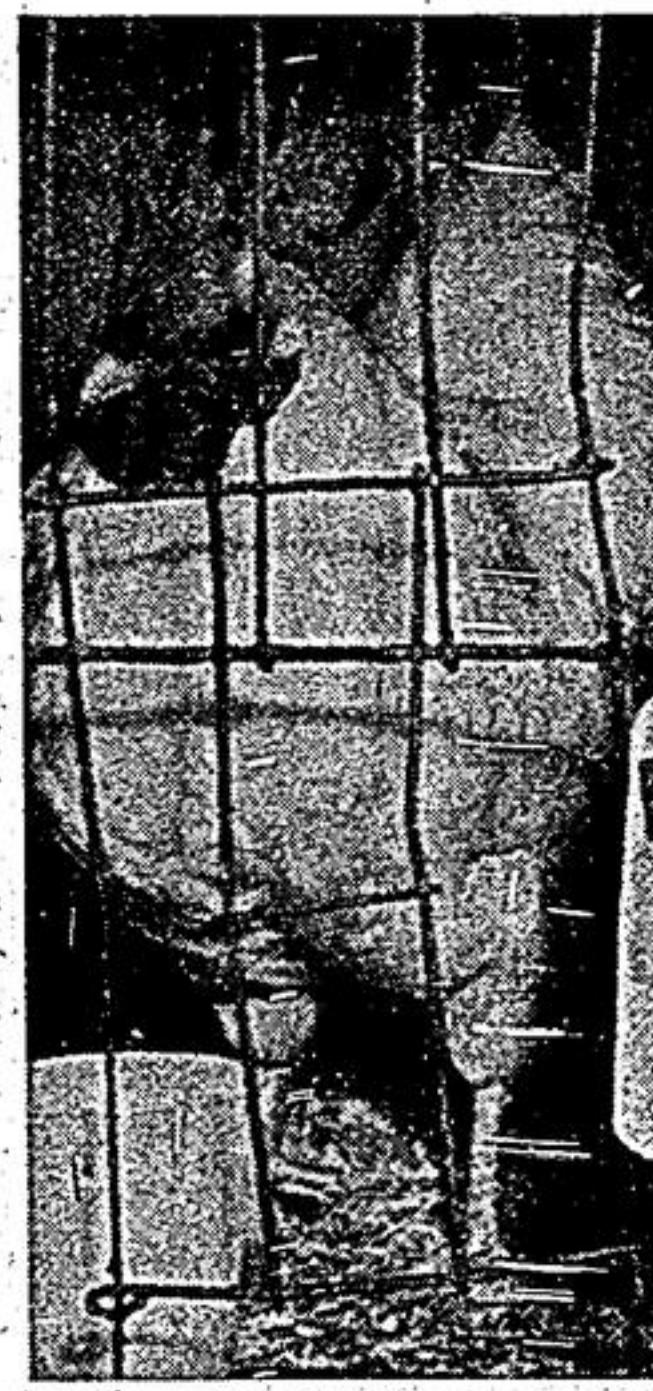
This Leghorn cockerel has something to crow about. The entry by Mr. R. W. Brown of Peterboro, was judged first in its class. Mr. Brown had several entries in the poultry show and carried off a number of awards. The display, that contained everything from rabbits to pigeons, was in the arena building.



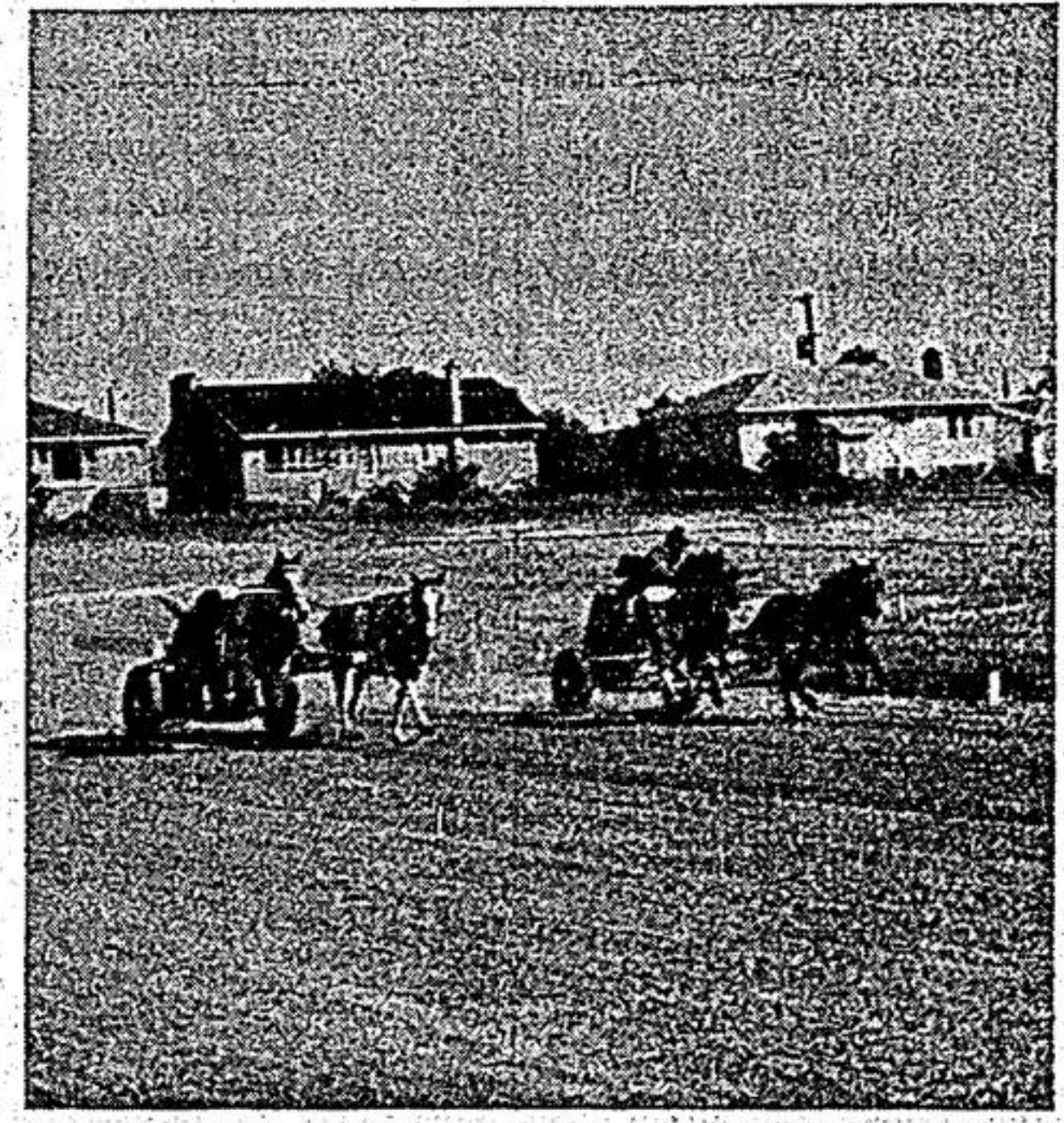
Twelve year old, Linda Owen, Wellington St., Markham is proud of her white tumbler pigeon that won an award. It is extremely tame and posed for the cameraman without blinking an eye. The Owen family had five entries in the show. Tommy Burton of Stouffville also had a first prize winner.



The West Hill and Highland Creek Scotch Hylanders in colourful kilt, accompanied the Lieut. Governor of Ontario, Hon. Earl Rowe to the front of the grandstand on Saturday afternoon for the official opening of the new race track. The pipers also entertained the huge crowd on the grounds with several numbers. It was one of the most colourful ceremonies ever conducted in the 108 year history of the Fair.



Another 1st prize winner in the poultry division was a Plymouth Rock rooster owned by E. J. McDonald of Markham.



Something entirely new was added to the track entertainment this year when chariot races were included on the two-day program. Pictured here, Messrs. Henry Michell and Campbell Anthony, both of Markham are engaged in a neck and neck stretch drive as they head for the wire. On Saturday, three chariot entries were on the card.

## Poplar Cutting Releases Spruce Understorey

The fall and winter woods-work program now underway in Ontario County Forest, Uxbridge Twp. Forest commenced with a stumpage sale of poplar bolts and logs to a local contractor. The wood will subsequently be sold to a crate fac-

tory for the production of wooden vegetable crates.

The purpose of cutting these trees is twofold—one being that the poplar, (large tooth and trembling aspen) is mature and should be harvested before it starts to rot and die and secondly, and perhaps the most important, the poplar has formed a heavy overstorey in a white spruce stand which was planted in 1930. The presence of the overstorey has resulted in the severe suppression of a large number of white spruce.

When the area was originally planted, the poplar was already present. It has managed to keep ahead of the spruce since that time and has retarded the growth of much of the latter. Fortunately, a sufficient number of the white spruce has not been too severely suppressed. The release of these trees through the removal of the poplar overstorey should result in increased growth and ultimately in the production of good quality spruce.

Although a poplar overstorey is beneficial in the original stages of the growth of the spruce, landowners with a stand of this type should not allow it to seriously damage the ultimate crop.

When we are angered or frightened our bodies automatically prepare us for defence. Heart action and respiration are speeded up, sugar for quick energy is released from the liver into the bloodstream, adrenaline is freed to tighten blood vessels and holst pressure.

## FASHION SHOW

Sponsored by:  
Grace Church Women's Auxiliary  
in  
**MORGAN HALL**  
Downstairs in  
Markham Shopping Centre

WED., OCT. 16th at 8 pm  
Admission — \$1.00  
**LUCKY DOOR PRIZES**  
TICKETS AVAILABLE AT DOOR

Fashions by **FRANKLIN-SIMON**

Courtesy of:  
Jewellery — Spence Jewellers  
Hair Styling — Joseph's Beauty Salon  
Beauty Supplies — Kiernan's Pharmacy  
Woolworth's — Floral Arrangements  
Sporting Goods — Canadian Tire Store, Mr. Pilkey

SEE FRANKLIN SIMON'S FULL LINE OF FALL CLOTHES

## Markham **ROXY** Markham

PHONE 294-3355 PHONE 294-3355  
THURS. - FRI. - SAT. — OCT. 10 - 11 - 12  
**"GIDGET GOES TO ROME"**  
JAMES DARREN — CINDY CAROL

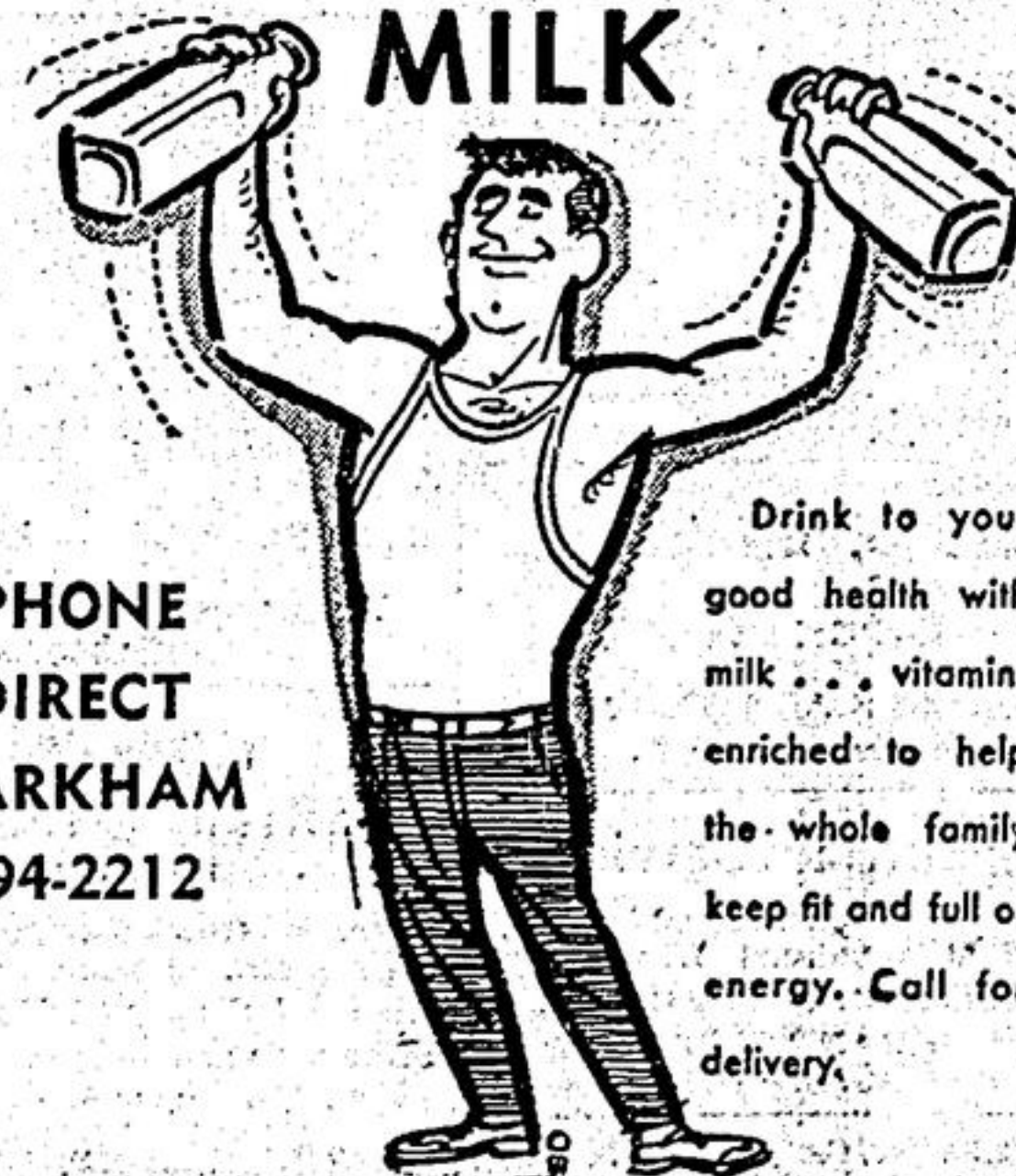
also  
**"TAMMY AND THE DOCTOR"**  
SANDRA DEE — PETER FONDA  
Both Hits in Technicolor  
MATINEE SATURDAY — 2 P.M. — ABOVE PROGRAM

Midnight Show — Sunday, Oct. 13  
**"WHITE SLAVE SHIP"**  
PIER ANGELI (Color) also  
**"THE YOUNG GO WILD"**  
EDMUND PURDOM  
Doors open 12:05 (adult entertainment)

MON. - TUES. - WED. — OCT. 14 - 15 - 16  
Sweeping the Screens Again in Wide-Screen Color  
**"GIANT"**  
ELIZABETH TAYLOR — ROCK HUDSON  
JAMES DEAN  
NOTE: One showing each evening at 8 p.m. Doors open 7.30.

"LAWRENCE OF ARABIA" starts Thur., Oct. 17.

## KEEP FIT WITH MILK



PHONE DIRECT  
**MARKHAM**  
294-2212

Drink to your good health with milk... vitamin-enriched to help the whole family keep fit and full of energy. Call for delivery.

**MARKHAM DAIRY LTD.**

For Office Supplies - come to The Tribune

Little **LOTTA** LOVELINESS TAKES  
OTHERS MAY IMITATE, OUR STYLES WE OURSELVES...  
**CREATE**  
Original CREATIONS by

**ILSE'S BEAUTY SALON**  
294-3173 MARKHAM  
640-2932 STOUFFVILLE