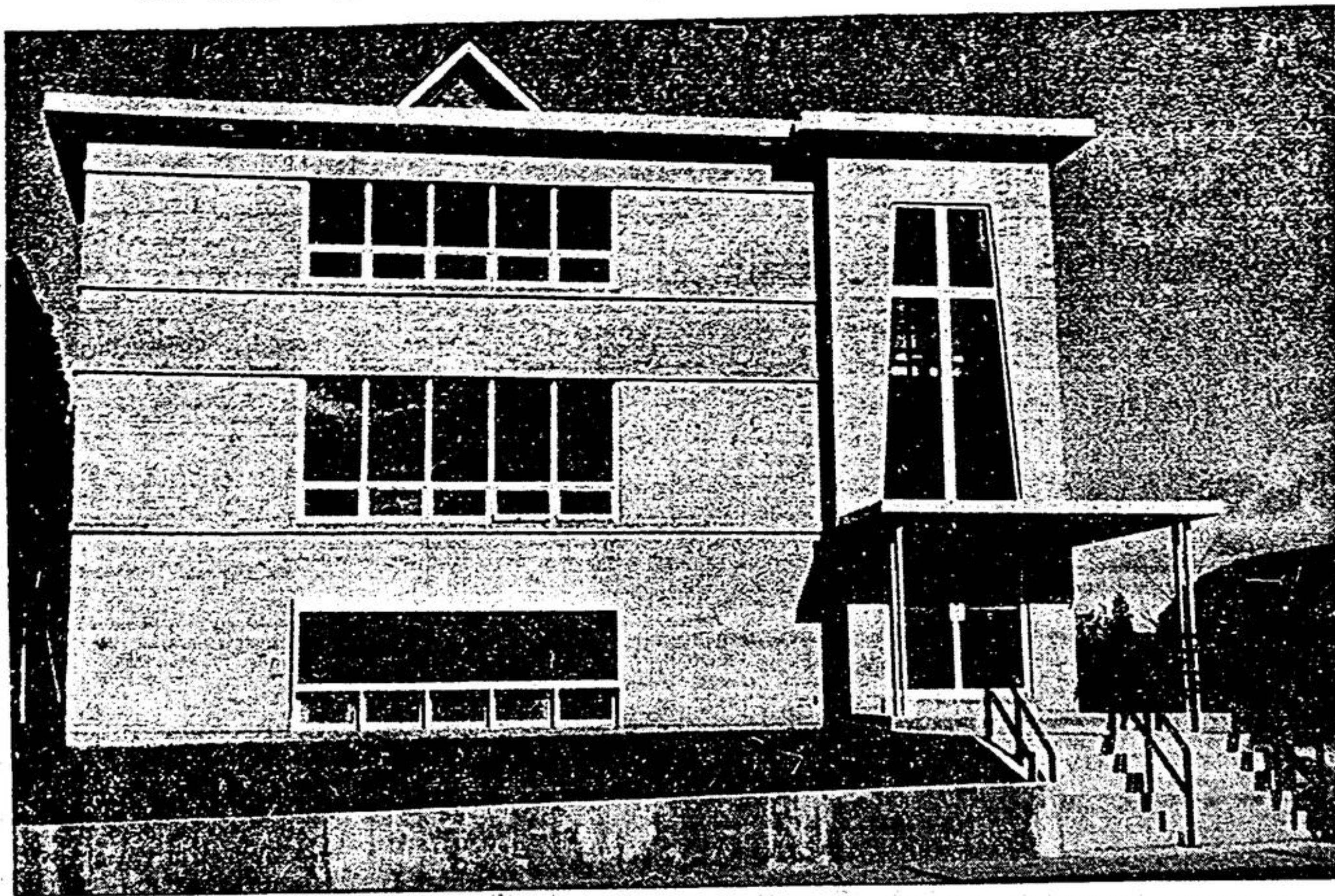


U. M. Church Completes New Addition



On Sunday morning at 10:45 a.m., a special service of dedication will mark the official opening of the new front addition to the Stouffville United Missionary Church, Main Street. The District Superintendent, Rev.

Ward M. Shantz will be the guest speaker. The building committee was headed by Mr. Reg. Stouffer. Other mem-

bers included — Clarence Pipher, Charles Atkinson, Gordon Brown, Carl Reesor, Edward Herbert and the Pastor, Rev. Arthur Walsh.

Phone Changeover Success As Subscribers Co-Operate

According to W. C. Barnes, Bell Telephone manager for this region, the success of the changeover of telephones from manual to dial operation early last Sunday was largely due to the co-operation of Stouffville telephone subscribers.

"The understanding and co-operation of local residents made our task comparatively easy," he said.

Most residents were asleep as the time for the switch drew near. Shortly after 3 a.m., when calling had reached its lowest ebb, a group of men wearing safety glasses pulled thousands of fuses from the back of the main frame in the old exchange. As the last fuse fell to the floor the manual switchboard was "dead."

With this completed, a signal sent over a special telephone line to the new dial exchange threw another group of men into action there. They pulled thousands of plastic insulators strung together with tape from the dial equipment. The removal of these insulators which prevents the equipment from functioning, put the new automatic switching equipment into operation, all in less than two minutes.

Speaking of the new Direct Distance Dialing (DDD) service, Mr. Barnes stressed that only station-to-station long distance calls can be placed through DDD.

"All other types of toll calls should be placed through the long distance operator (dial Operator)," he said. "These include person-to-person, collect and credit card calls as well as those placed from public telephones and hotel and motel rooms. Also, calls on which the person placing the call wishes to know the charges as soon as he has completed his call, will still go through the long distance operator as will those calls which are being charged to a third telephone."

In using DDD to reach a telephone in Stouffville's home 416 area (e.g. Toronto) a telephone user dials only the DDD access code ("1") followed by the seven digit telephone number. Before the other telephone rings an operator will ask "your number please."

"Customers should then give the number of the telephone they are using to place the call," said the manager.

However, to call a telephone in another area such as Montreal, which is in the 514 area the code (514) must be dialed, before the actual telephone number.

Overseas Xmas Mailing Dates

With the Christmas period approaching the Canada Post Office urges the public not to delay posting parcels to friends and relatives overseas. The public is cautioned to mail as early as possible. Last minute postings if general, might render it impossible for the Post Office to find sufficient accommodation on the last steamers leaving in time to ensure Christmas delivery.

CHRISTMAS MAIL FOR ARMED FORCES OVERSEAS
The dates shown below apply also to the posting of mail for Armed Forces in the areas shown. The dates shown for the European Continent will also apply for troops in Egypt and other countries in the Middle East as well as for the Republic of Congo.

Deadline Dates for Overseas Christmas Mailing, both surface and air transport have been set as follows:
TRANS - ATLANTIC GREAT BRITAIN (Surface) From Ontario and Quebec — Letters Nov. 24 Parcel Post Nov. 24.
EUROPEAN CONTINENT (Surface) Ontario and Quebec — Letters Nov. 24 Parcel Post Nov. 10.

TRANS - ATLANTIC GREAT BRITAIN (Air Mail) From Ontario and Quebec — Letters Dec. 15 Parcel Post Dec. 11.
EUROPEAN CONTINENT (Air Mail) From Ontario and Quebec — Letters Dec. 12 Parcel Post Dec. 10.

Information regarding Customs Declarations and Export Permit Regulations governing parcels and letter packets for delivery in other countries, may be secured at the Post Office. The public is requested to clip this notice of mailing dates for future reference.

SCRATCH PADS
from Jumbo Size
down to
Note Size
The Stouffville Tribune

WANTED

MORE CREAM SHIPPERS

For Best Results Ship Your Cream to Stouffville Creamery. We pay two cents more per pound Butter-fat for Cream delivered to the creamery.

To have our truck call, phone 186W

— COLD STORAGE LOCKERS FOR RENT —

Stouffville Creamery Co.

For Office Supplies — It's THE TRIBUNE



The finest and safest investment in Canada

CANADA SAVINGS BONDS

Some of the features of the new 1962 Series of Canada Savings Bonds

- yield 5.11% if held to maturity, November 1, 1976
- price 100. Accrued interest will be charged after November 15, 1962
- may be purchased for cash or on the Monthly Savings Plan
- available in amounts from \$50 to \$10,000

... and, of course, Canada Savings Bonds can easily be cashed at any time at full face value plus earned interest.

Phone or mail your order to

Russell Beare

213 Main Street, Markham

Telephone: 294-1523

Authorized Sub-Agent of

Wood, Gundy & Company Limited

Bethesda News

Bethesda school board and teacher attended the Eighth Convention of the York County Elementary School Trustees' Association and banquet on Wednesday, Oct. 24, at Thornhill Secondary School.

Gail Ham suffered a cracked bone in her ankle when she fell on the steps at school, last week. She will be able to attend classes wearing a walking cast.

In spite of the early snow storm on Thursday a satisfactory crowd attended the Burkholder auction sale.

A group of Bethesda Young People, suitably attired for Halloween enjoyed an evening at games at the Burkholder home, Saturday evening.

Mr and Mrs Lloyd Wideman, Toronto and son Murray had dinner Sunday evening with Mr and Mrs Allan Wideman and family.

The next meeting of the Women's Institute on Nov. 14, will be held at the home of Mrs John Miller. Come and bring a friend to this annual sale.

A "Vote-No" public meeting will be held on Monday, Nov. 5,

8:15 p.m. at the Vandorf Hall.

Mr and Mrs Clifford Burkholder were among the "Pike" dinner guests at the home of Mr and Mrs Howard Pike, Markland Woods, Etobicoke, on Saturday.

Church services will be held in the afternoon, beginning next Sunday. — Sunday school 1:30 p.m. ad church at 2:30 p.m.

127,000 Visited Pioneer Village

Wednesday, Oct. 31 marked the closing down for the year of the Pioneer Village located in the Black Creek Conservation Area, Jane St. and Steeles Ave.

The well-known Village being developed as a 19th century crossroads community to commemorate Canada's centenary, is open to visitors from mid-May to the end of Oct. each year. To date, this year, some 127,000 persons have visited the Village compared to 98,000 during the same period a year ago.

The Authority also disclosed that 11,800 persons attended the Pioneer Festival held at the Black Creek area Sat., Oct. 13. It was the largest attendance in the 6-year history of the Festival.

Favorable fall weather has also helped to swell attendance figures at the MTRCA's nine other conservation areas located throughout the 1,000-square mile region.

Since the beginning of the year, a total of 788,700 persons have visited the Authority's areas compared to last year's total of 727,500 for the same period. All of the areas, incidentally, are open year-round to the public.

'QUALITY' 'SERVICE'

FEEDS FEEDS FEEDS

We are NOW Booking ORDERS for Ontario Feed Oats, Western Oats, Corn, Western Barley, Oilcake Meal and Concentrates.

We are BUYERS of

Ontario Grain, Ontario Wheat, Red Clover, Alfalfa and Timothy.

NEW Phone Numbers :

Office — 640-3400, 640-3401

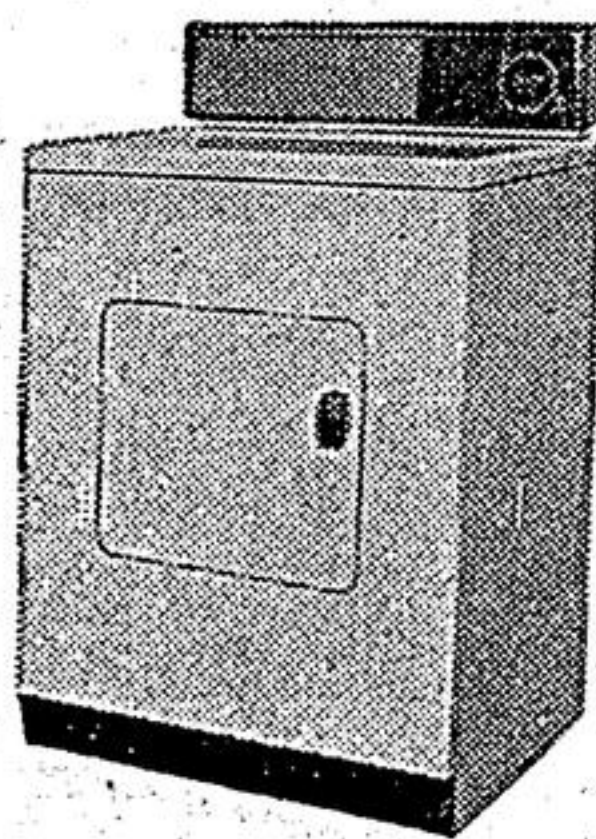
Mill 640-1892

Evening or after hours :

640-2492, 640-1404, 640-3586

STIVER BROS.

STOUFFVILLE



BUY AN **ELECTRIC CLOTHES DRYER** NOW
GET A **FREE ELECTRIC BLANKET**

MAKE EVERY DAY A DRYING DAY ELECTRICALLY

- ECONOMICAL • FLAMELESS
- ODOURLESS • SAFE
- PRECISELY AUTOMATIC



\$29.95 VALUE!!

- DOUBLE BED SIZE
- FULL 2-YEAR GUARANTEE
- A TOP QUALITY BLANKET
- CONVERTIBLE CONTOURED CORNERS
- CAN BE WASHED AND DRIED AUTOMATICALLY

CHOOSE FROM ANY OF THESE FAMOUS BRANDS

- | | | |
|---------------------|-----------------|------------------------------------|
| • BEATTY | • INGLIS | • RCA WHIRLPOOL |
| • COFFIELD-HAMILTON | • KELVINATOR | • SIMPLICITY |
| • CONNOR | • LEONARD | • SIMPSON'S-KENMORE-Simpsons-Sears |
| • CORONADO | • MAXWELL | • SPEED QUEEN |
| • DOMINION | • MAYTAG | • THOR |
| • Eaton's-VIKING | • MCCLARY-EASY | • Co-op VISCOUNT |
| • G.M. FRIGIDAIRE | • PHILCO-BENDIX | • WESTINGHOUSE |
| • GENERAL ELECTRIC | | |

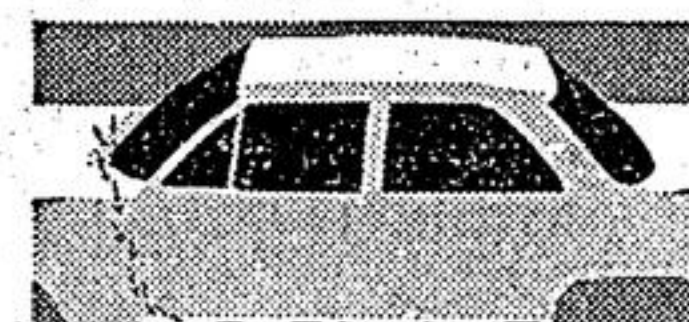
...AND OTHER FINE MAKES.



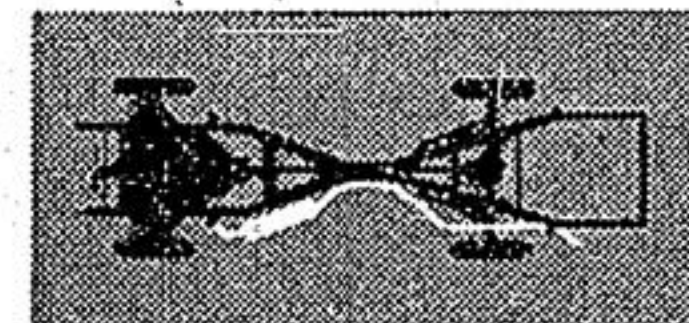
THIS OFFER GOOD AT THE STORES DISPLAYING THIS SYMBOL NOV. 3RD TO DEC. 15TH



PONTIAC HAS THE FEATURES THE OTHER '63's WISH THEY HAD



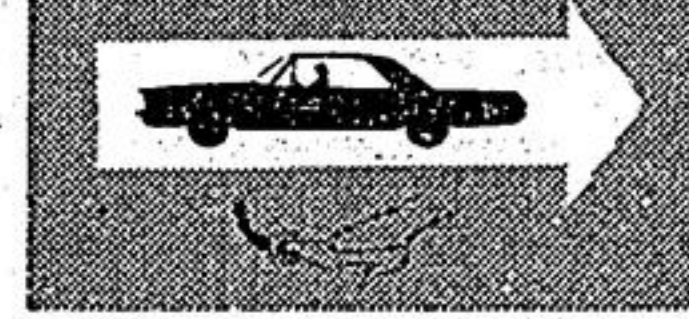
Water entering the cowl air intake flushes out corrosive elements... following air dries the entire inside of the rocker panel.



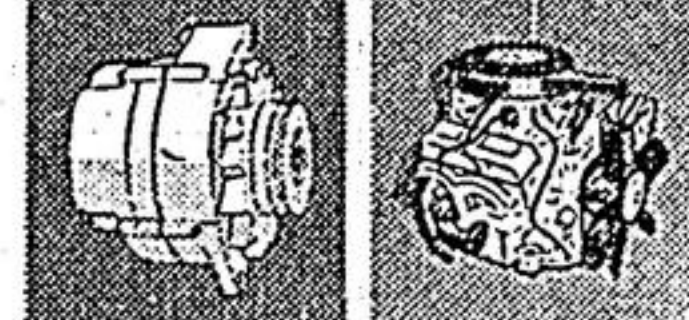
A new aluminized treatment provides extra protection against muffler corrosion.



Pontiac's smart new over-and-under headlights make night driving safer, easier, by lighting more road on high beam.

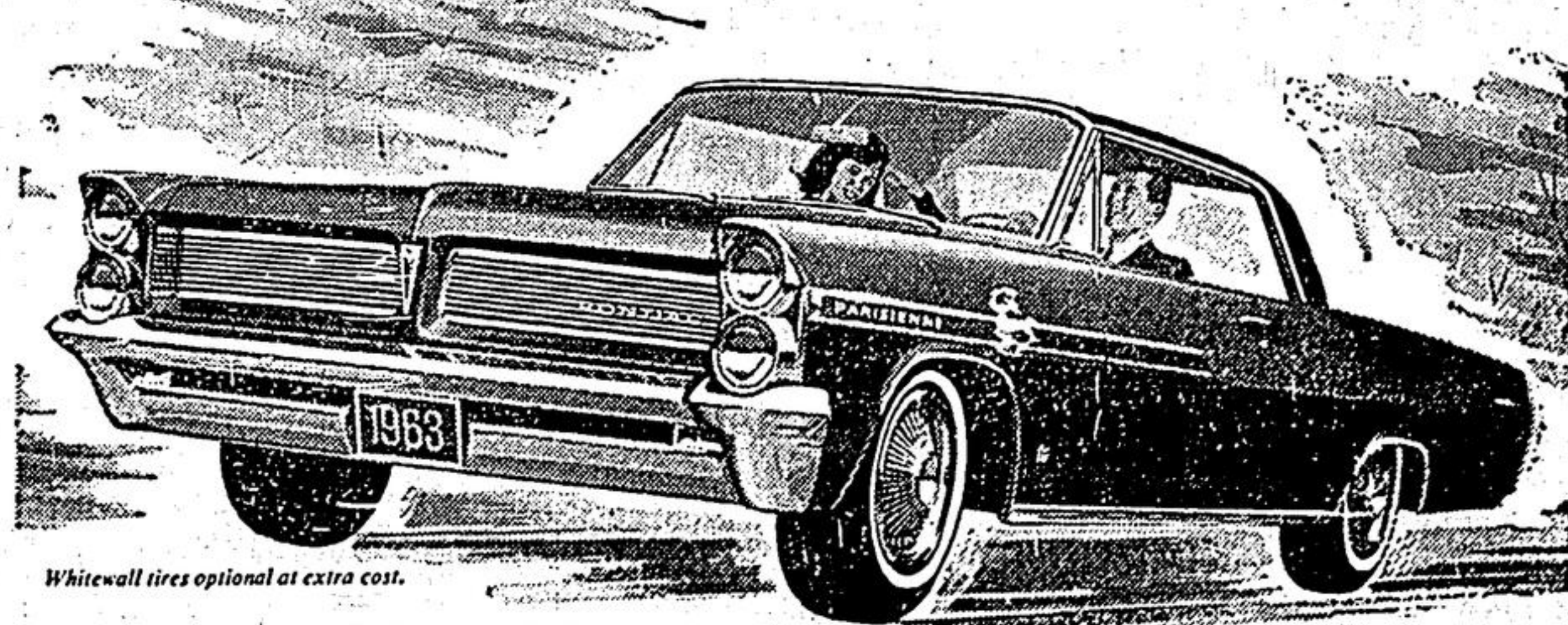


Every Pontiac has big, big brakes to ensure quick, positive stopping, every time. Backing up automatically adjusts the brakes.



Pontiac's new Delcotron generator keeps charging your battery even while the engine idles.

Shown is one of the many powerful Pontiac V8's and there's a new lightweight Astro-Six, too.



Whitewall tires optional at extra cost.

YOU GET THEM ALL IN... '63 PONTIAC
the car the other '63's wish they looked like

Be sure to watch "The Tommy Ambrose Show" on the CBC-TV network. Check local listings for time and channel.

NEIL PATRICK MOTORS LTD. Stouffville — Phone 640-3450

CHAS. COOPER LIMITED Clarendon, Ont. — Phone 649-2115, 649-2114